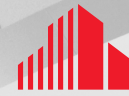


FOR LEASE

Center Parkway Business Center

8735 Center Parkway, Sacramento, CA 95823



**CUSHMAN &
WAKEFIELD**

P R O F E S S I O N A L B U S I N E S S C E N T E R

PROPERTY HIGHLIGHTS:

- / Prominent Location
- / Office, Medical and Retail Space Available
- / Building and Monument Signage
- / Excellent Visibility
- / Built in 2007
- / Nearby Restaurants and Shopping
- / Easy Access to Hwy 99
- / Surrounded by dense residential neighborhoods
- / Abundant Parking



8735 CENTER PARKWAY ±8,626 SF BUILDING

±6,484 SF Available For Lease • \$1.25 PSF, NNN

Chad Cook, MCR, SIOR, CCIM
Senior Director
+1 916 329 1562
chad.cook@cushwake.com
Lic #01953066


Zach Mosle, CCIM
Senior Associate
+1 916 329 1543
zach.mosle@cushwake.com
Lic #01924595


400 Capitol Mall, Suite 1800
Sacramento, CA 95814
+1 916 288 4800
cushmanwakefield.com

SITE PLAN: 8735 CENTER PARKWAY

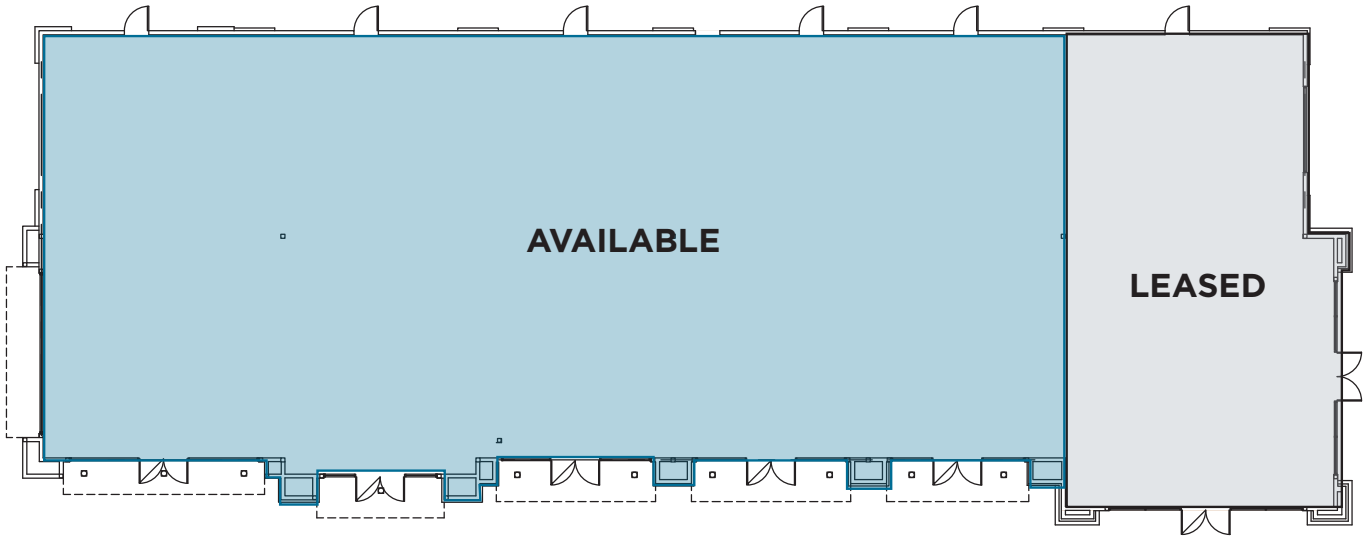


8735 Center Parkway
 For Lease: \$1.25 PSF, NNN
 (±6,484 SF Available For Lease)

 **AVAILABLE**

 **LEASED**

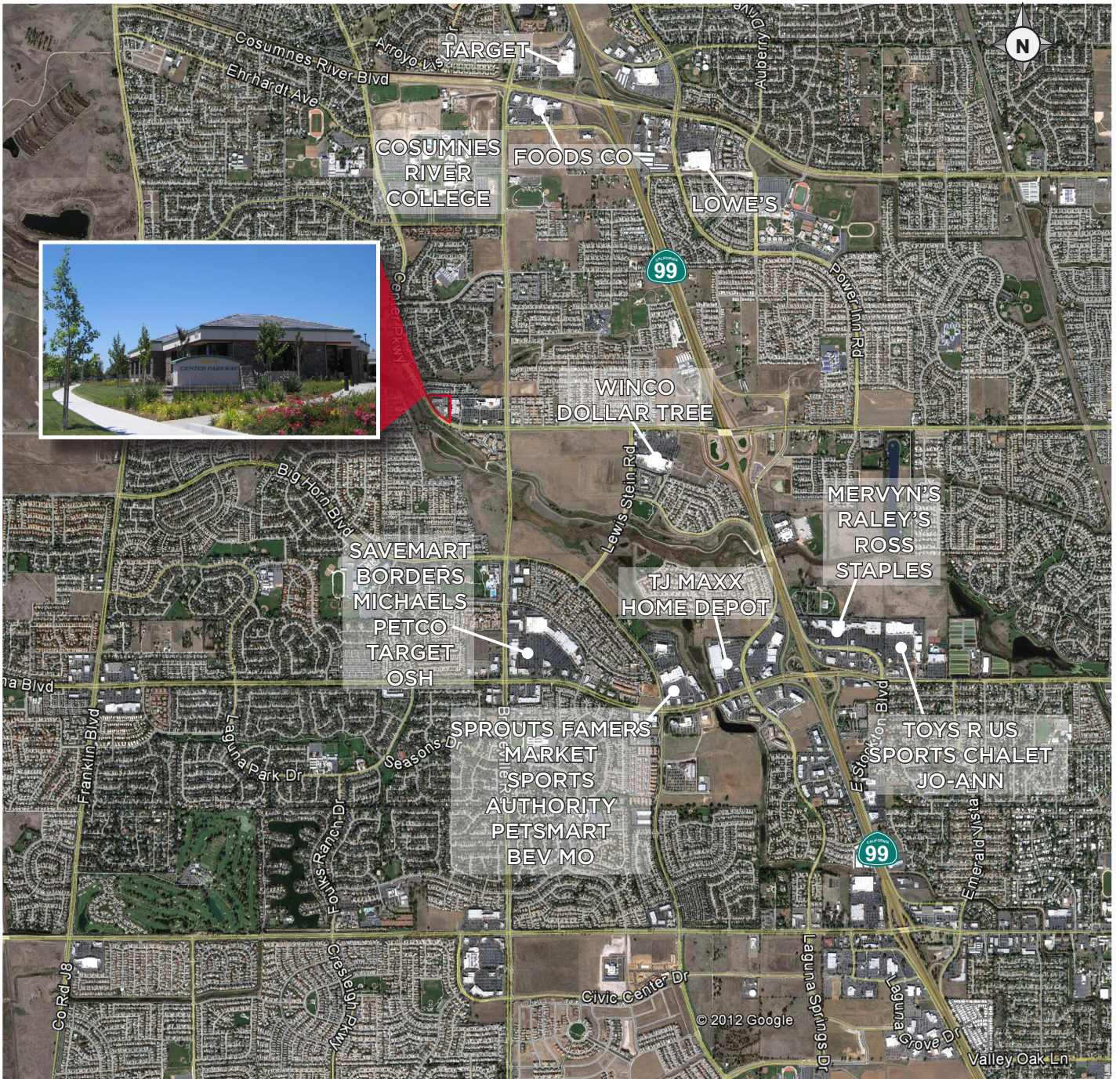
- Tenants Within The Business Center:
- State Of California
 - Dr. Dawei Zheng
 - Dr. Prithipal S. Sethi, MD
 - Perfect Smile Dental



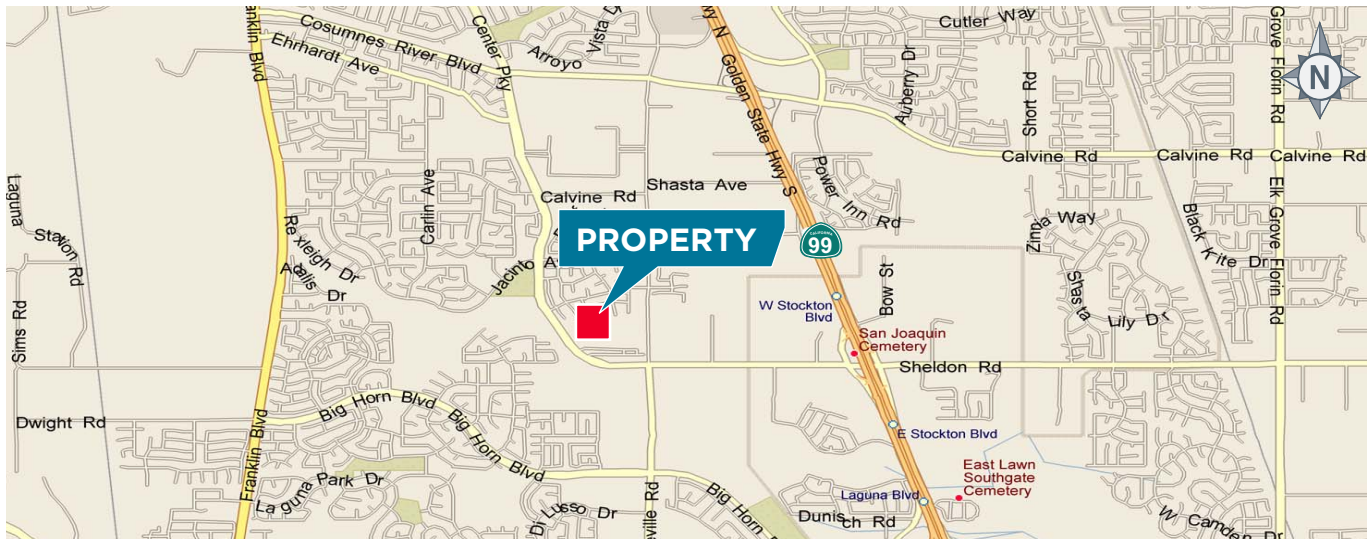
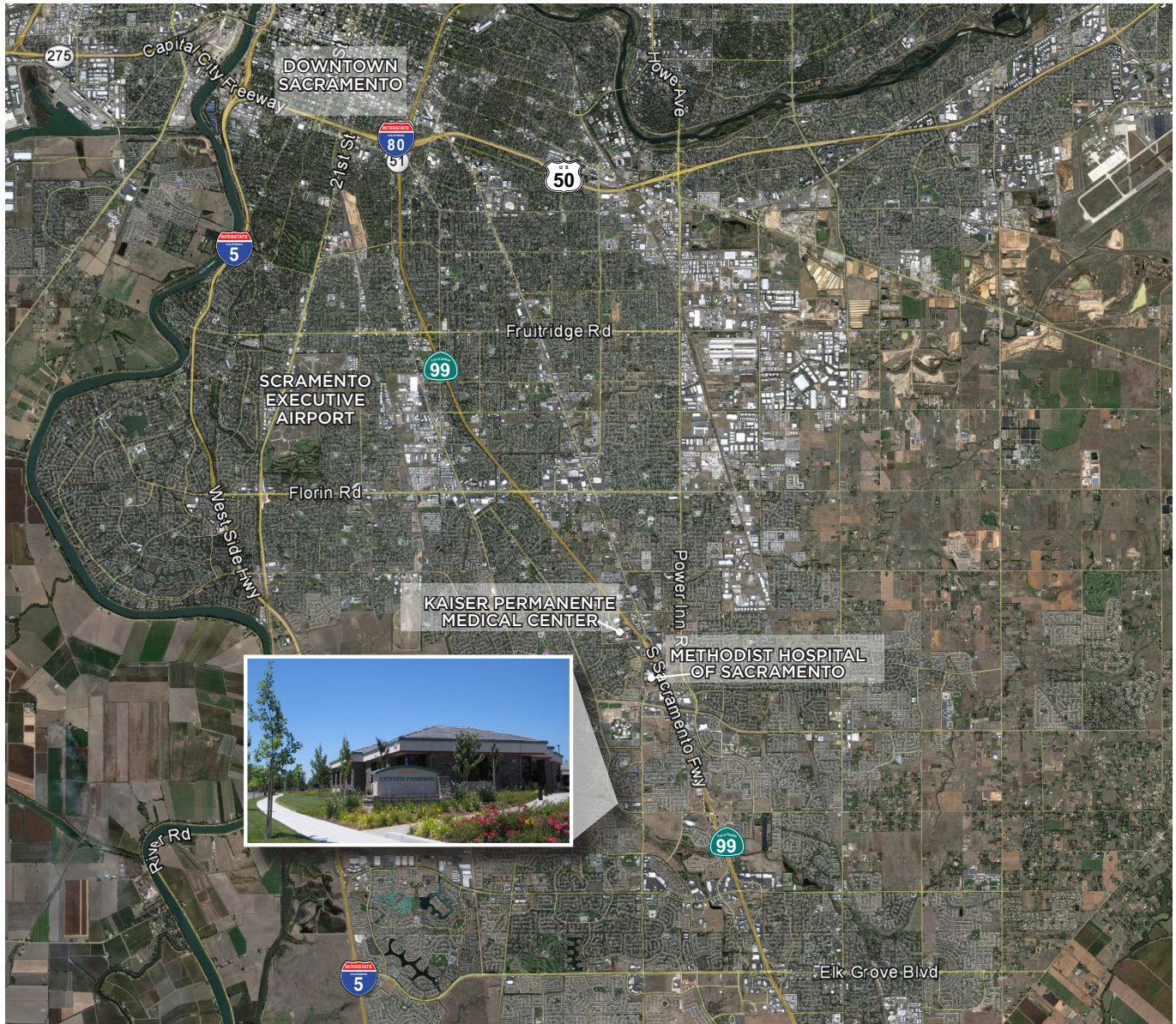
8735 Center Parkway

- For Lease Only: \$1.25 PSF, NNN
- Building Size: ±8,626 SF
- For Lease: ±6,484 SF Available For Lease (Divisible to ±1,500 SF)





Aerial



Center Parkway Business Center

8735 Center Parkway, Sacramento, CA 95823

For More Information Contact:

Chad Cook, MCR, SIOR, CCIM
Senior Director
+1 916 329 1562
chad.cook@cushwake.com
Lic #01711687

Zach Mosle, CCIM
Senior Associate
+1 916 329 1543
zach.mosle@cushwake.com
Lic #01924595



400 Capitol Mall, Suite 1800
Sacramento, CA 95814
Tel +1 916 288 4800
cushmanwakefield.com