

FOR LEASE RETAIL & PROFESSIONAL SERVICES Port Warwick

580 City Center Boulevard, Newport News, Virginia 23606



PROPERTY DETAILS

- Located in Port Warwick with high visibility and frontage on City Center Blvd.
- Easy access to City Center of Oyster Point, Jefferson Ave., Warwick Blvd. and Interstate 64
- Square footage from 1,008 to 2,301 or larger by combining spaces
- New Construction - Ground floor retail and/or professional services space with 18,855 sf of medical and office above
- Daytime Employment Population of 21,999 (1-mile) and 54,238 (3-mile)
- Ready for occupancy 1st Quarter of 2020

CONTACT:

BOB SAUNDERS
(757) 640-9296
bobsaunders@harveylindsay.com

HARVEY LINDSAY
COMMERCIAL REAL ESTATE

A Tradition of Forward Thinking

FOR LEASE RETAIL & PROFESSIONAL SERVICES Port Warwick

580 City Center Boulevard, Newport News, Virginia 23606



CONTACT:

BOB SAUNDERS
(757) 640-9296
bobsaunders@harveylindsay.com

HARVEY LINDSAY
COMMERCIAL REAL ESTATE

A Tradition of Forward Thinking

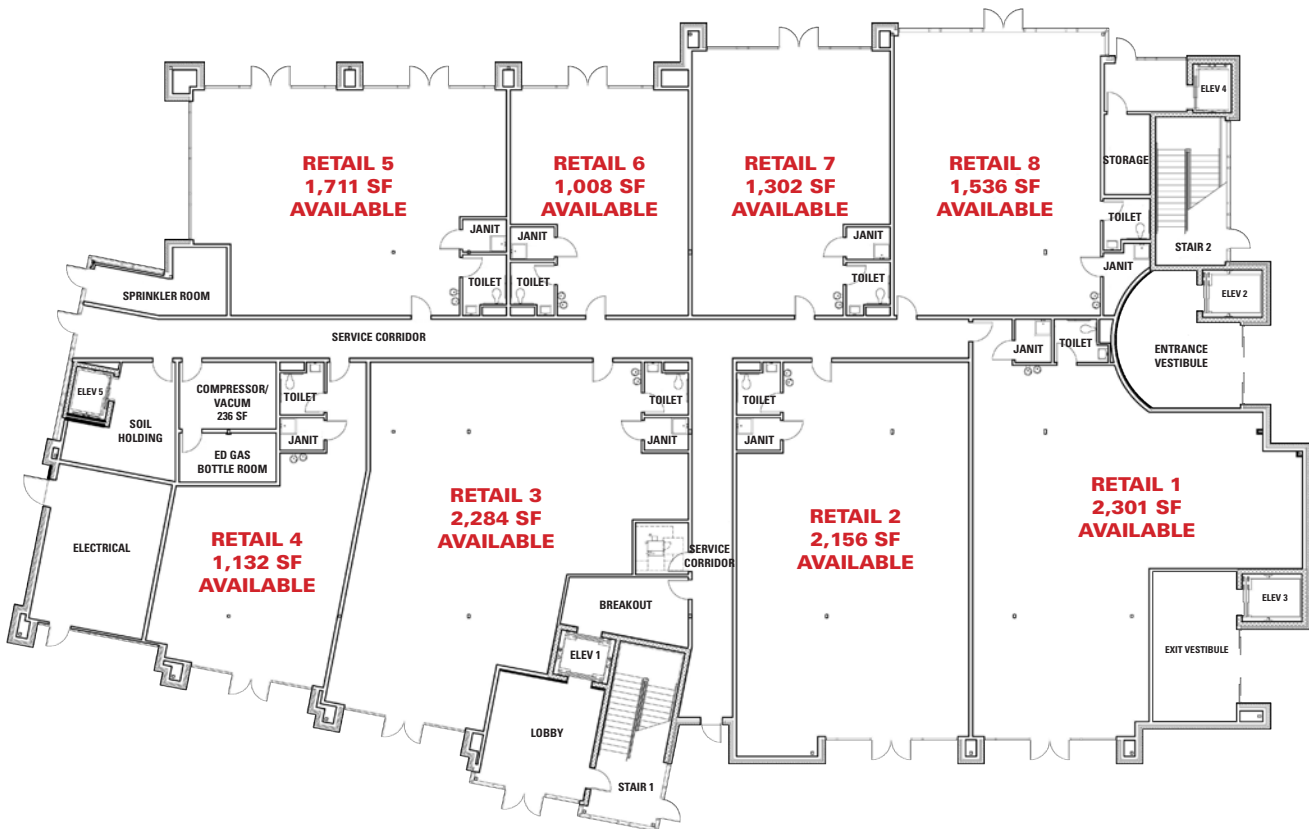
FOR LEASE

RETAIL & PROFESSIONAL SERVICES

Port Warwick

580 City Center Boulevard, Newport News, Virginia 23606

City Center Boulevard



RETAIL FLOOR PLAN

CONTACT:

BOB SAUNDERS
(757) 640-9296
bobsaunders@harveylindsay.com

HARVEY LINDSAY
COMMERCIAL REAL ESTATE

A Tradition of Forward Thinking