



The pruneyard Campbell

Three Class "A" Office Buildings | Total ±365,229 SF

[WEBSITE](#)

[VIRTUAL SLIDESHOW](#)

[AVAILABILITY UPDATE](#)



Bob Simpson
408.615.3421
LIC#: 01240540

Rob Souza
408.615.3448
LIC#: 01916129

Todd Beatty
408.615.3418
LIC#: 00976940

ELLIS PARTNERS

PROJECT HIGHLIGHTS

- Three Class “A” office buildings totaling 365,229 SF
- Massive retail renovation completed in 2018
- Tremendous identity with unsurpassed panoramic views
- Expansive asset with multiple options for future growth
- New high-speed elevators and electronic directories
- Building card-key access and on-site security
- Common conference rooms and fitness center with showers
- On-site hotel, restaurants, retail, and entertainment
- Exclusive Pruneyard discount card for office tenants

The
pruneyard
Campbell



1901 S. BASCOM (TOWER 1)

Suite 1150*		419± sf
Suite 1111*		1,117± sf
Suite 1525*		1,476± sf
Suite 830	MARKET READY	2,501± sf
Suite 1600	LEASED	3,303± sf
Suite 370	MARKET READY	4,321± sf
Suite 600		5,280± sf
Suite 500		9,515± sf
Suite 200		9,520± sf

* Denotes Promotional Suite

1919 S. BASCOM (PRUNEYARD PLACE)

Suite 650		11,386± sf
Suite 600	NEW	10,659± sf

CONTIGUOUS/DIVISIBLE OPTIONS

Suite 600/650*	NEW	22,045± sf
----------------	-----	------------

* Denotes Full Floor

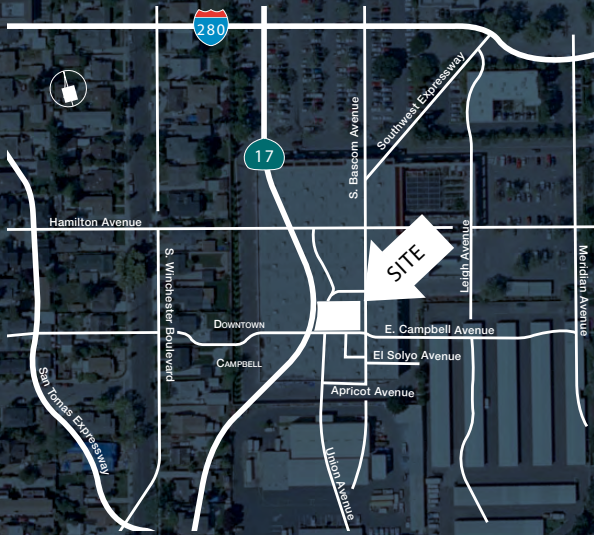
1999 S. BASCOM (TOWER II)

Suite 815		2,499± sf
Suite 590		3,335± sf
Suite 950		4,053± sf
Suite 650		5,597± sf
Suite 100	LEASE PENDING	8,636± sf

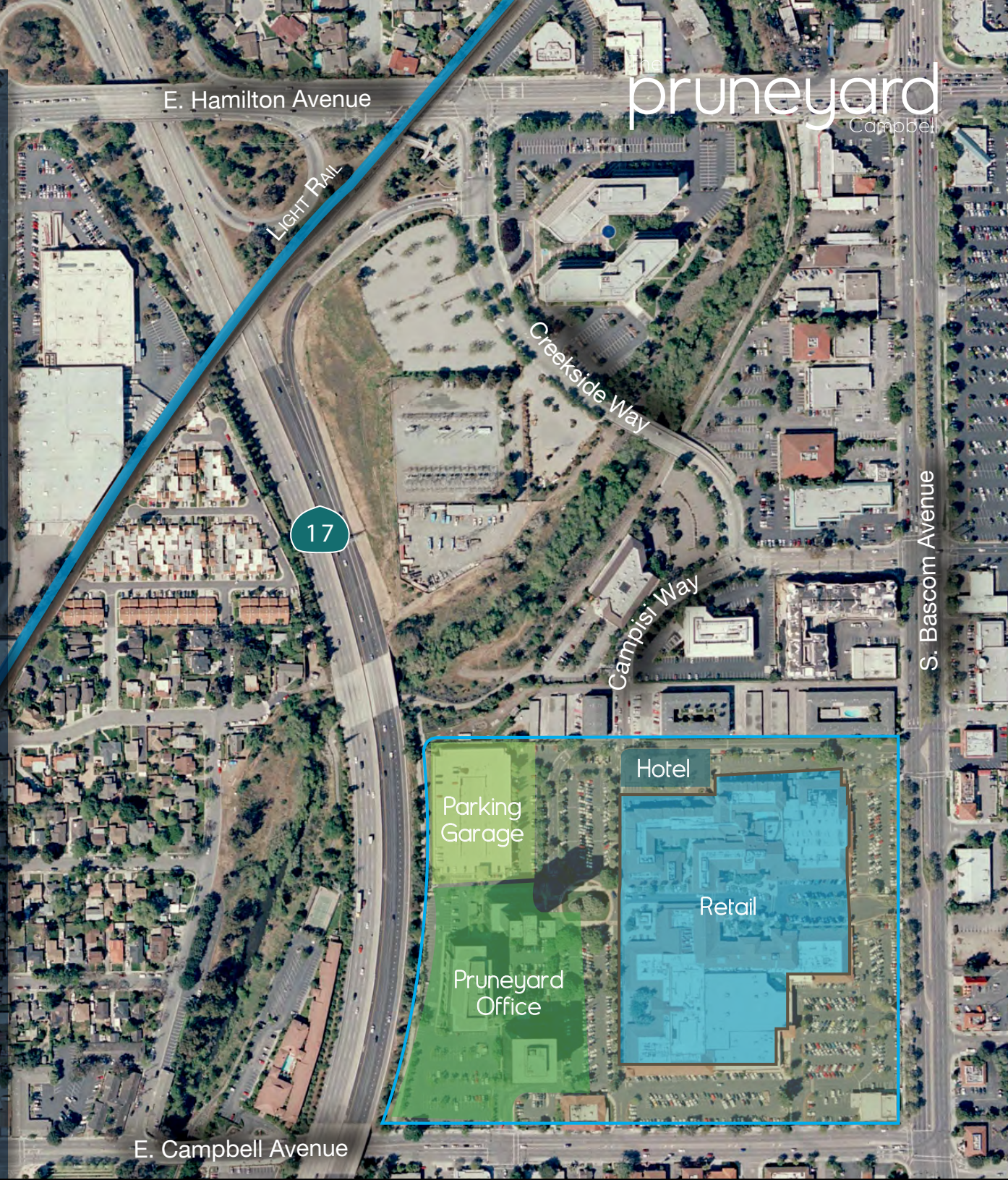
UPDATED NOVEMBER 2018



LOCATION



- Excellent access to Highways 17 & 85 and Interstates 280 & 880
- Walking distance to Light Rail serving Diridon Station
- Optimal West Valley location with convenient access
- 3.0/1,000 parking ratio with dedicated 754 stall parking garage



AMENITIES MAP

RESTAURANTS

- 1 Pacific Catch
- 2 El Burro
- 3 Kyoto Palace
- 4 Rock Bottom Brewery
- 5 Burger Lounge
- 6 Asian Box
- 7 Lulu's
- 8 ColdStone Creamery
- 9 Buca di Beppo
- 10 Café Artemis
- 11 Tin Pot Creamery
- 12 Mendocino Farms Sandwich Market
- 13 Patxi's Pizza
- 14 Orchard City Kitchen
- 15 Togo's
- 16 Outback Steakhouse

RETAIL

- 1 Marshalls
- 2 Classy Nails
- 3 GemCraft
- 4 Peninsula Beauty Supply
- 5 Unique Eyewear
- 6 Sports Fever
- 7 Blossom Nail Spa
- 8 Trudy's
- 9 Salon Rache
- 10 Trader Joe's
- 11 Sports Basement
- 12 Verizon

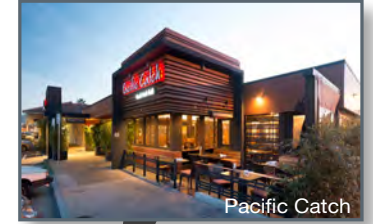
PROFESSIONAL SERVICES

- 1 Massage Envy
- 2 Bankers Network Corp.
- 3 Pruneyard Custom Tailor
- 4 United Security Bank
- 5 Chase
- 6 Fred Slater Optometry
- 7 Bank of America

COFFEE / ENTERTAINMENT

- 1 Coffee Society
- 2 Camera 7 Cinemas
- 3 Peet's Coffee

The pruneyard Campbell



The pruneyard Campbell

Three Class "A" Office Buildings | Total ±365,229 SF



Bob Simpson
408.615.3421
LIC#: 01240540

Rob Souza
408.615.3448
LIC#: 01916129

Todd Beatty
408.615.3418
LIC#: 00976940

ELLIS PARTNERS