

FOR LEASE | CREATIVE STRUCTURE AVAILABLE FOR CREDIT TENANTS

OWINGS COURT PROFESSIONAL CENTER

100 OWINGS CT, REISTERSTOWN, MD 21136



Seth Danels

443.921.9344

sdanels@troutdaniel.com

Stacey Berman

443.865.4998

sberman@troutdaniel.com



PROPERTY SUMMARY

Available SF:	1,200 - 2,546 SF
Lease Rate:	\$15.00 SF (MG)
Lot Size:	0.89 Acres
Building Size:	20,000 SF
Zoning:	BL
Parking Ratio:	6.25/1,000 SF
Sub Market:	Reisterstown Road Corridor



PROPERTY HIGHLIGHTS

- Signage available on Franklin Boulevard
- Suites separately metered for individual HVAC control
- Well maintained, two-story office building
- Close to I-795, Reisterstown Rd & Hannah More Park
- Conveniently located with walking distance to many amenities including restaurants and shops
- Direct entry to suite

Seth Danels

443.921.9344

sdanels@troutdaniel.com

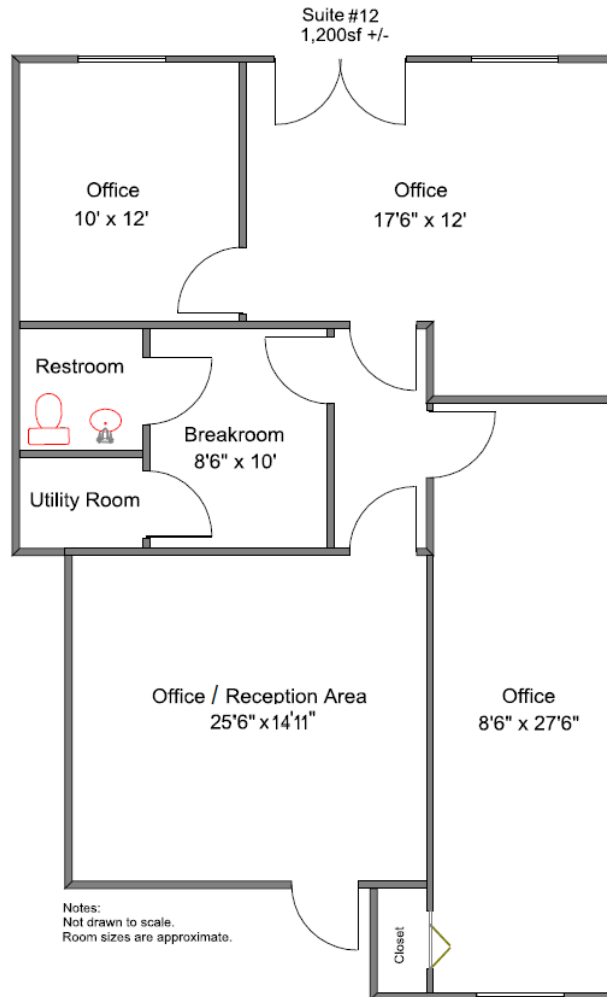
Stacey Berman

443.865.4998

sberman@troutdaniel.com

The information contained in this marketing brochure has been obtained from sources we believe to be reliable; however, Trout Daniel & Associates LLC has not verified, and will not verify any of the information contained herein, nor has Trout Daniel & Associates LLC conducted any investigation regarding these matters and makes no warranty or representation whatsoever regarding the accuracy or completeness of the information provided. An agent indicated by an asterisk (*) has a direct or indirect ownership interest in this property.

Lower Level Floor Plans



Seth Danels

443.921.9344

sdanels@troutdaniel.com

Stacey Berman

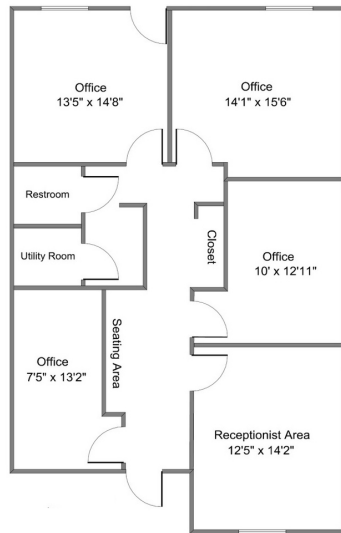
443.865.4998

sberman@troutdaniel.com

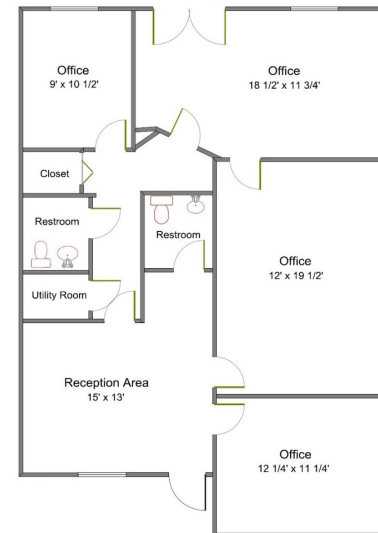
The information contained in this marketing brochure has been obtained from sources we believe to be reliable; however, Trout Daniel & Associates LLC has not verified, and will not verify any of the information contained herein, nor has Trout Daniel & Associates LLC conducted any investigation regarding these matters and makes no warranty or representation whatsoever regarding the accuracy or completeness of the information provided. An agent indicated by an asterisk (*) has a direct or indirect ownership interest in this property.

Upper Level Floor Plans

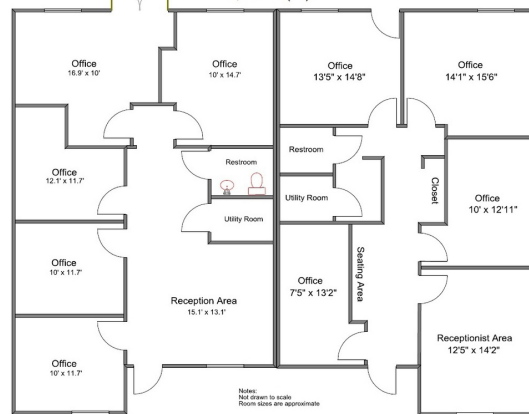
Suite 7
1,237 SF (+/-)



Suite 9
1,237 SF (+/-)



Suites 5 & 7
2,546 SF (+/-)



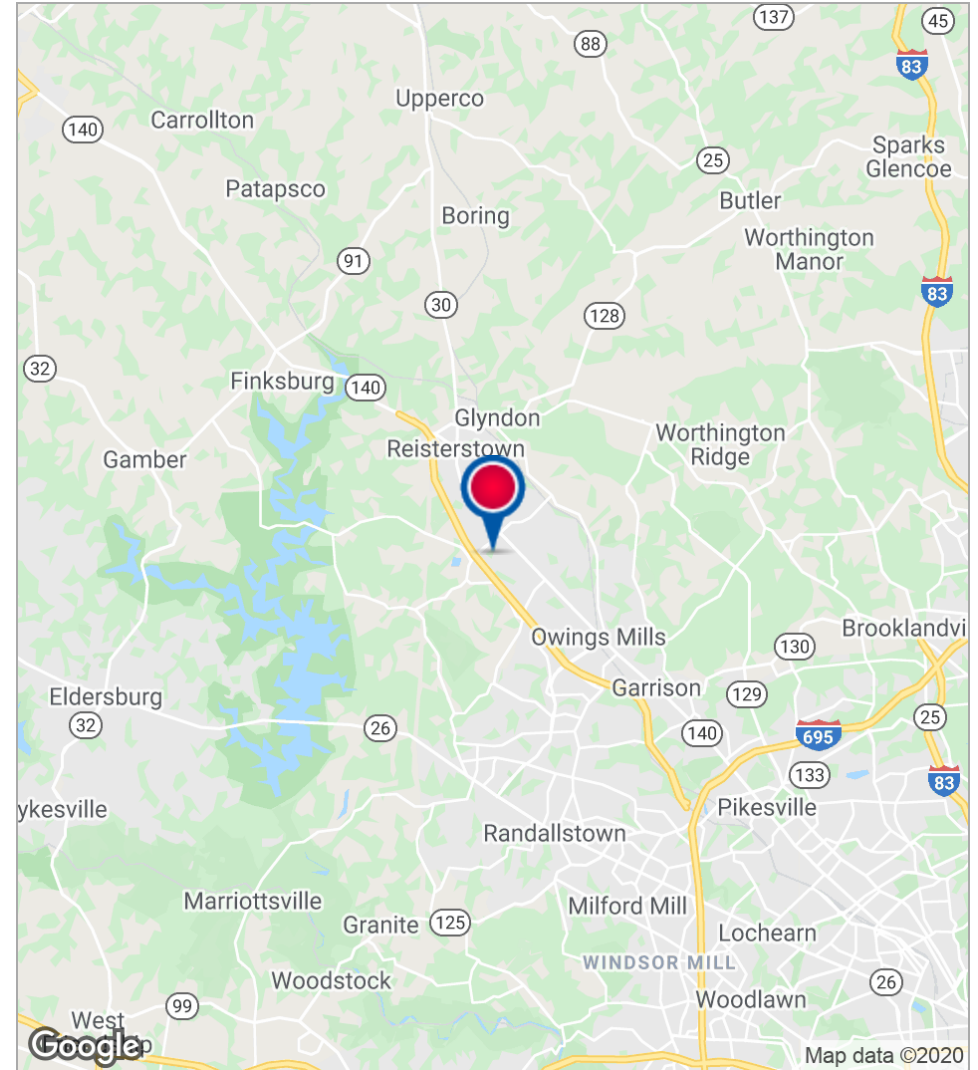
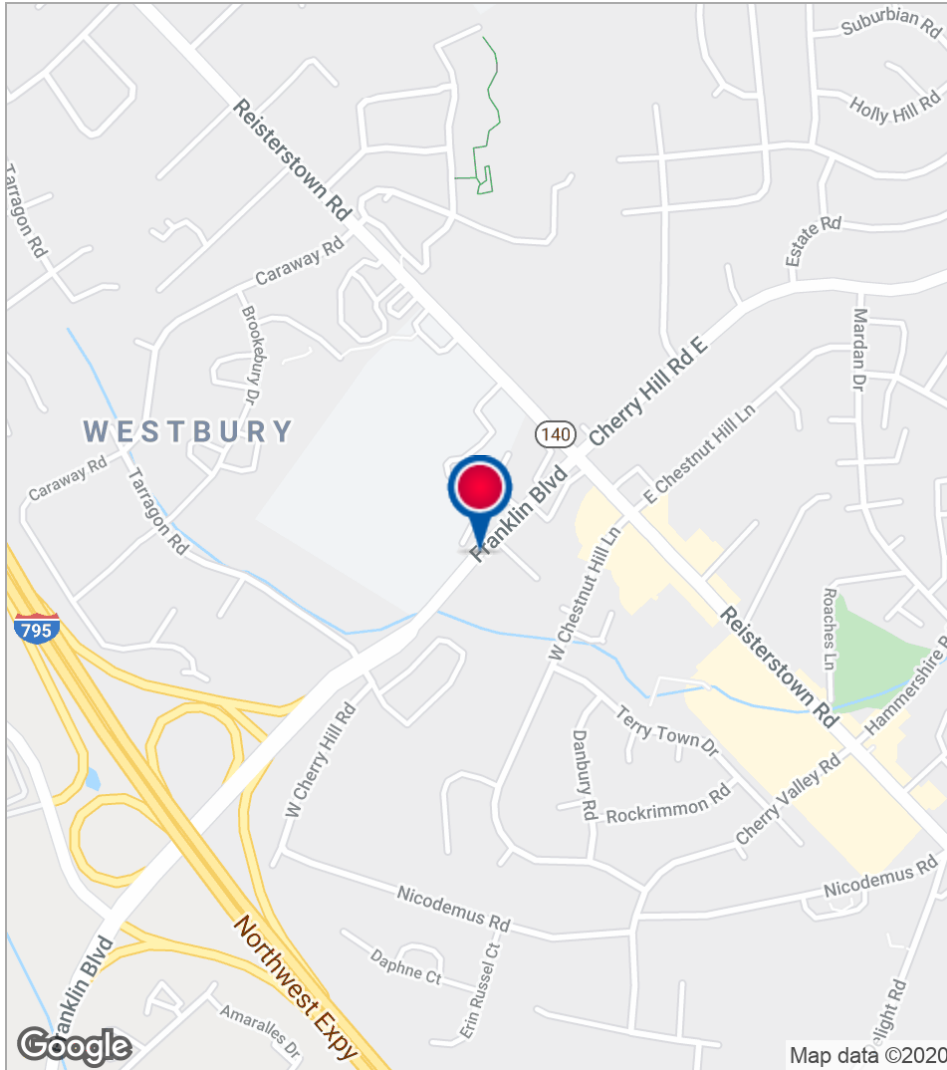
100 OWINGS CT, REISTERSTOWN, MD 21136

OWINGS COURT PROFESSIONAL CENTER



TROUT DANIEL & ASSOCIATES

Location Maps

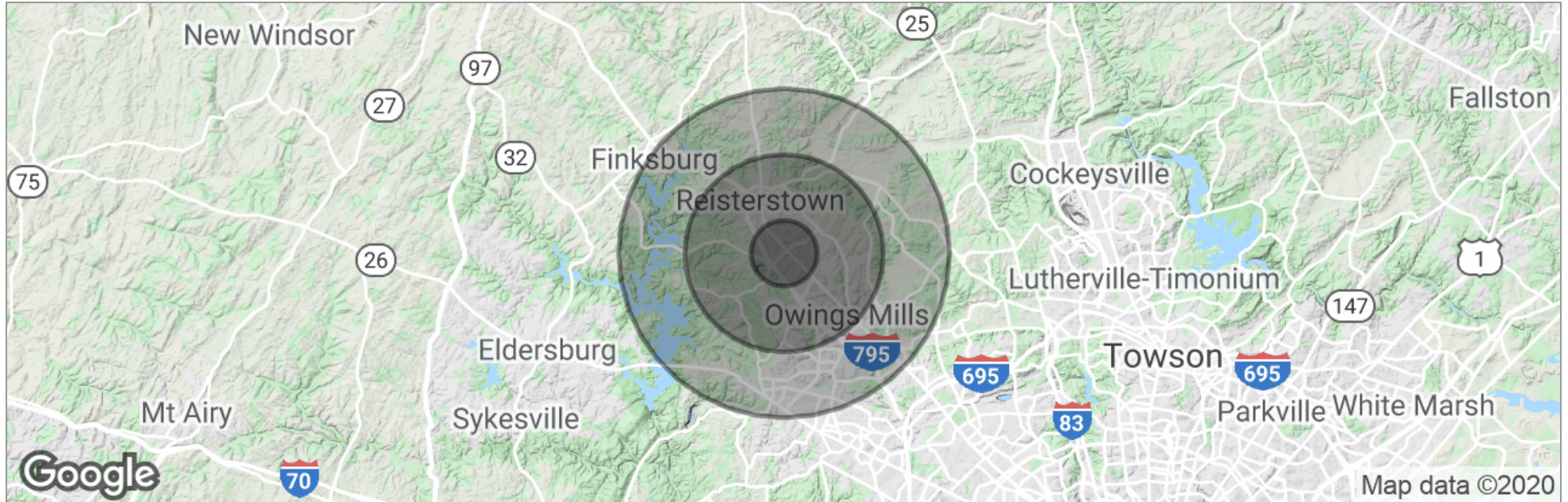


Seth Danels
443.921.9344
sdanels@troutdaniel.com

Stacey Berman
443.865.4998
sberman@troutdaniel.com

The information contained in this marketing brochure has been obtained from sources we believe to be reliable; however, Trout Daniel & Associates LLC has not verified, and will not verify any of the information contained herein, nor has Trout Daniel & Associates LLC conducted any investigation regarding these matters and makes no warranty or representation whatsoever regarding the accuracy or completeness of the information provided. An agent indicated by an asterisk (*) has a direct or indirect ownership interest in this property.

Demographics Map



	1 Mile	3 Miles	5 Miles
Total Population	15,842	60,569	115,575
Population Density	5,043	2,142	1,472
Median Age	34.5	35.5	36.1
Median Age (Male)	32.0	33.6	34.2
Median Age (Female)	36.4	36.9	37.6
Total Households	6,270	23,304	45,299
# of Persons Per HH	2.5	2.6	2.6
Average HH Income	\$65,810	\$83,217	\$88,315
Average House Value	\$238,303	\$262,281	\$307,127

* Demographic data derived from 2010 US Census

Seth Danels

443.921.9344

sdanels@troutdaniel.com

Stacey Berman

443.865.4998

sberman@troutdaniel.com

The information contained in this marketing brochure has been obtained from sources we believe to be reliable; however, Trout Daniel & Associates LLC has not verified, and will not verify any of the information contained herein, nor has Trout Daniel & Associates LLC conducted any investigation regarding these matters and makes no warranty or representation whatsoever regarding the accuracy or completeness of the information provided. An agent indicated by an asterisk (*) has a direct or indirect ownership interest in this property.