

RETAIL SPACE | 9515 Antioch Road, Overland Park, KS 66212



- 810 SF space, currently used as office
- Retail building in a grocery-anchored center
- Co-tenants include Joslin's Jewelers and Salon Modern Classics
- 17,660 CPD on Antioch
- In close proximity to Hy-Vee, Commerce Bank, AutoZone, Aldi, CVS, Johnny's Tavern, and Scooter's Coffee
- Excellent location for nail salon, chiropractic office, insurance company, or other professional services with retail exposure



Asking Rent: \$2,165/Month
(\$25/SF NNN - Nets \$7.07/SF)

Jill S. Bergthold, CCIM
jbergthold@fishmancommercial.com
913.747.3322 O | 913.961.0600 C



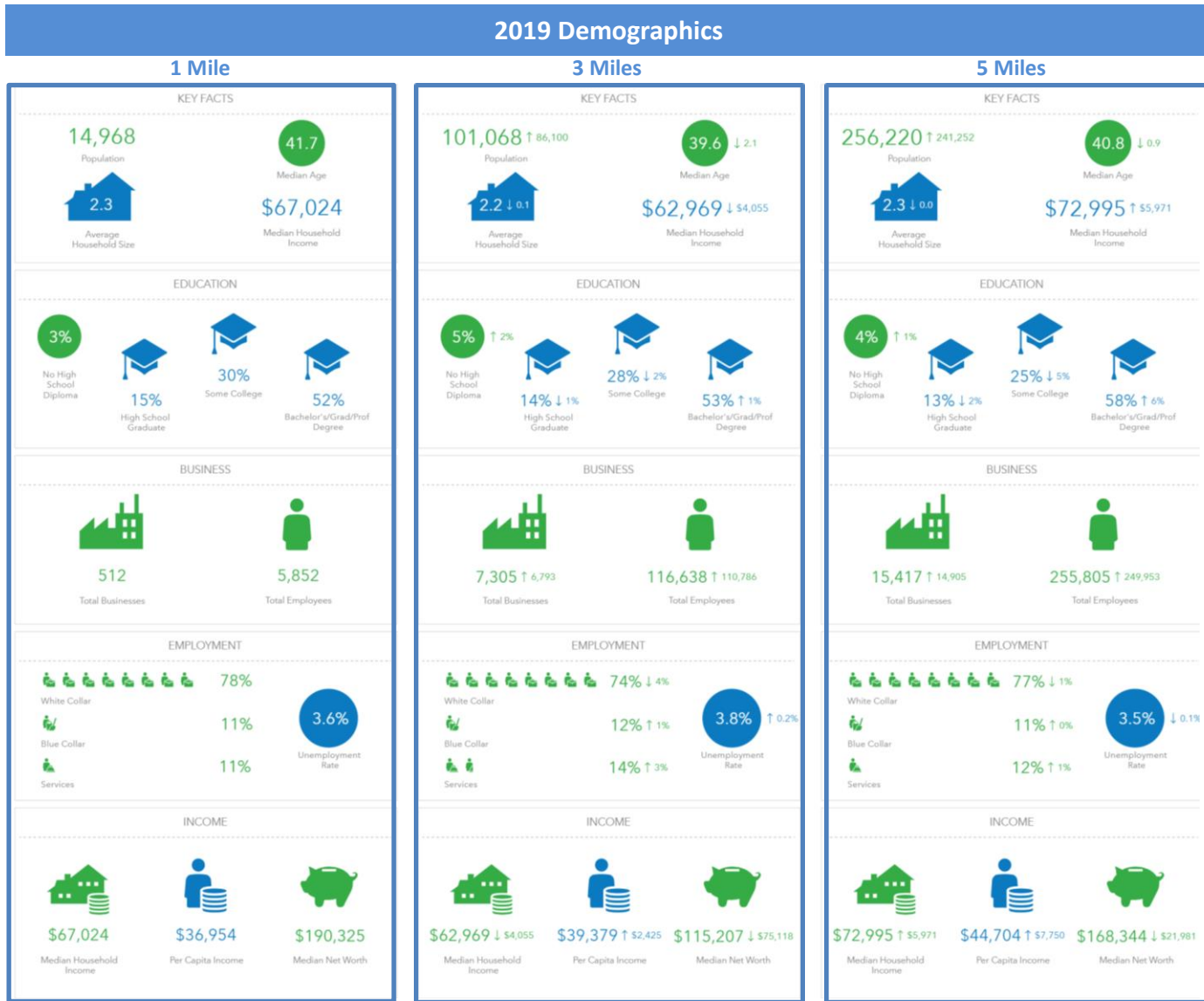
RETAIL SPACE | 9515 Antioch Road, Overland Park, KS 66212



Jill S. Bergthold, CCIM
jbergthold@fishmancommercial.com
913.747.3322 O | 913.961.0600 C



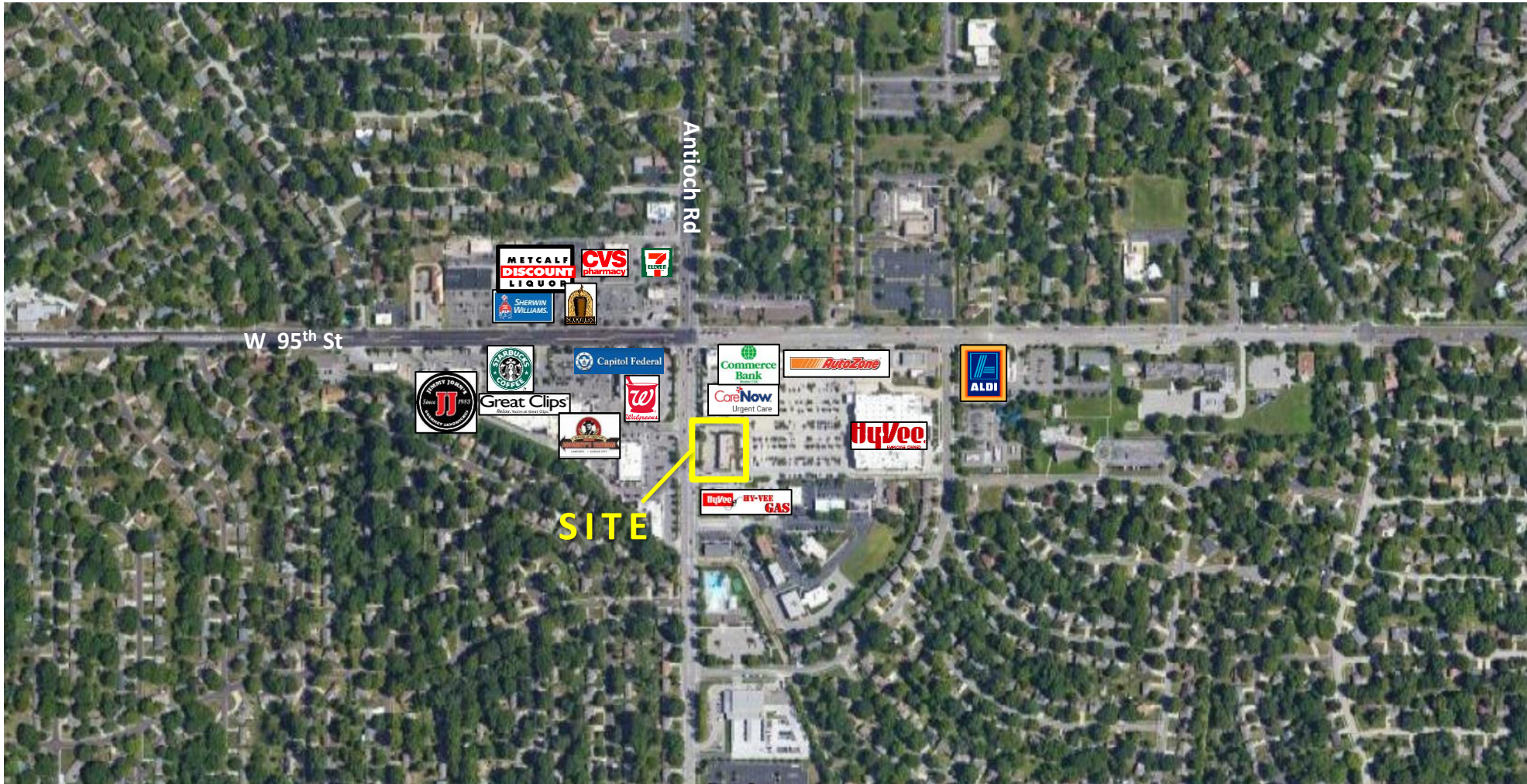
RETAIL SPACE | 9515 Antioch Road, Overland Park, KS 66212



Jill S. Bergthold, CCIM
 jbergthold@fishmancommercial.com
 913.747.3322 O | 913.961.0600 C



RETAIL SPACE | 9515 Antioch Road, Overland Park, KS 66212



Jill S. Bergthold, CCIM
jbergthold@fishmancommercial.com
913.747.3322 O | 913.961.0600 C

