



1600 Governor Hall St.

Gretna, Louisiana 70053

Property Highlights

- ±10,000 SF of second floor office space
- Situated in the Westbank Expressway and Lafayette Avenue Corridor
- The second floor has 2 elevators, 2 kitchens, bathrooms, conference room, 8 offices, and open space for cubicles
- Available as 1 unit or can be subdivided
- Build to Suit
- 125 Parking Spots

Lease Rate

\$12.00 SF/yr (Gross)



For more information

Jourdon Schultz

O: 504 525 1311 | C: 504 635 9144
jschultz@latterblum.com

430 Notre Dame Street
New Orleans, LA 70130
504 525 1311 tel
latterblum.com

CALL OR EMAIL FOR MORE INFORMATION

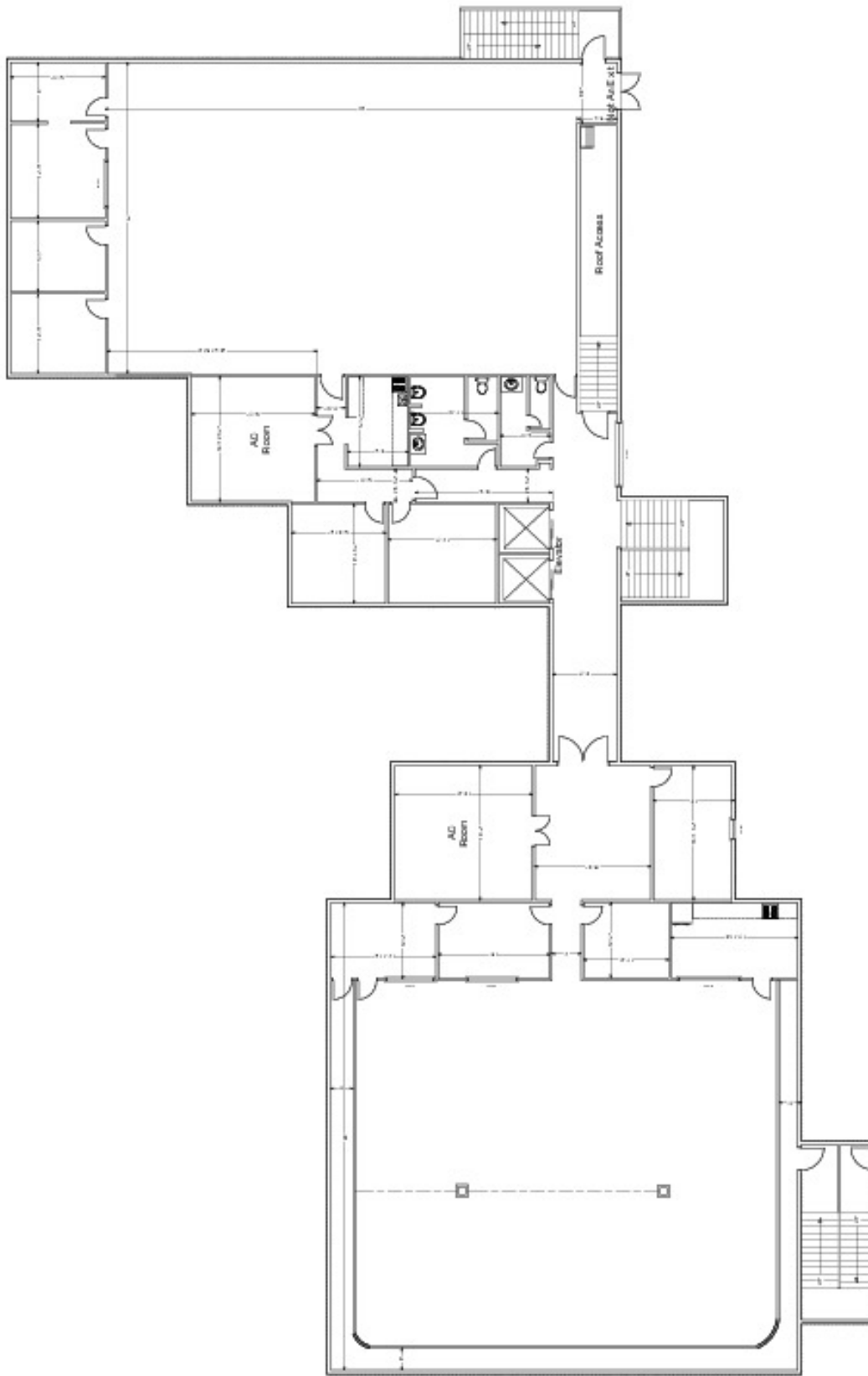
Exterior Photos



Interior Photos



Property Floor Plan



FOR ILLUSTRATION PURPOSES ONLY, NOT TO SCALE

Area Demographics

KEY FACTS



219,659

Population

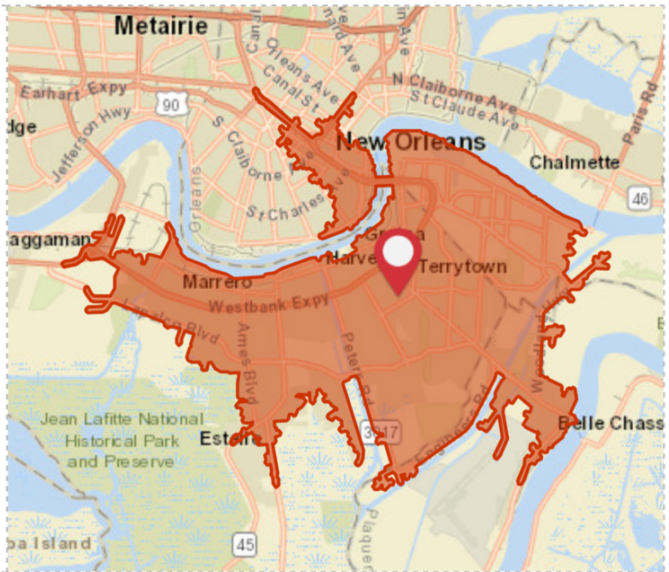
37.0

Median Age



84,411

2018 Total Households



BUSINESS



11,088

Total Businesses



136,776

Total Employees

INCOME



\$29,689

Median Net Worth



\$61,737

2018 Average Household Income

EDUCATION



17%

No High School Diploma



33%

High School Graduate



28%

Some College



22%

Bachelor's/Grad/Prof Degree

EMPLOYMENT



56%

White Collar



24%

Blue Collar



19%

Services



6.5%

Unemployment Rate

Demographics Based on a 15 Minute Drive-Time

Retailer Map



Map data © 2019 Google Imagery © 2019 , DigitalGlobe, U.S. Geological Survey, USDA Farm Service Agency

430 Notre Dame Street
New Orleans, LA 70130
504 525 1311 tel
latterblum.com