

8406 Harford Road
Parkville, MD 21234



AVAILABLE FOR LEASE



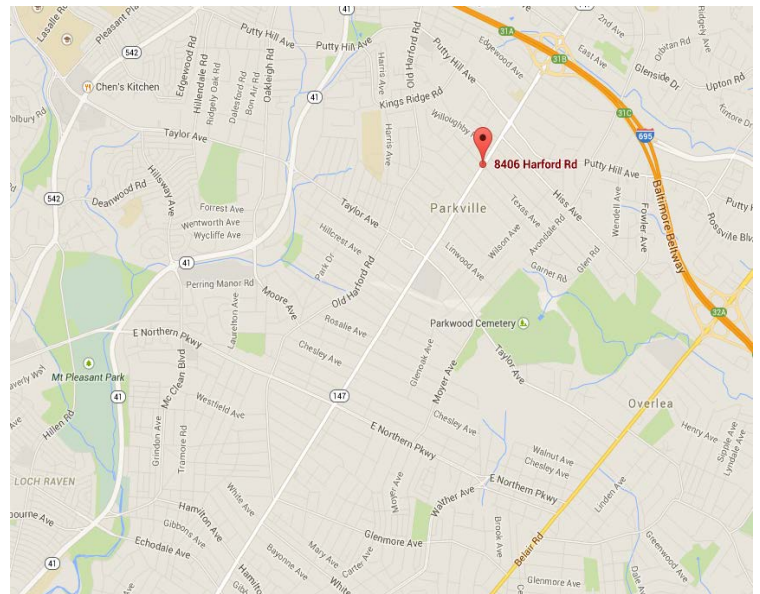
AVAILABLE FOR LEASE

Suite 1 - 1512 s.f.

- Currently Built out for general retail
- Very busy foot traffic
- Adjacent to Southern Blues restaurant
- Available with 30-60 days notice

PROPERTY FEATURES

- Highly visible freestanding building direct visibility along Harford Road
- Large pylon signage available
- 24 parking spaces
- Zoning: BL-AS
- Traffic count: Harford Road-23,062 ADT



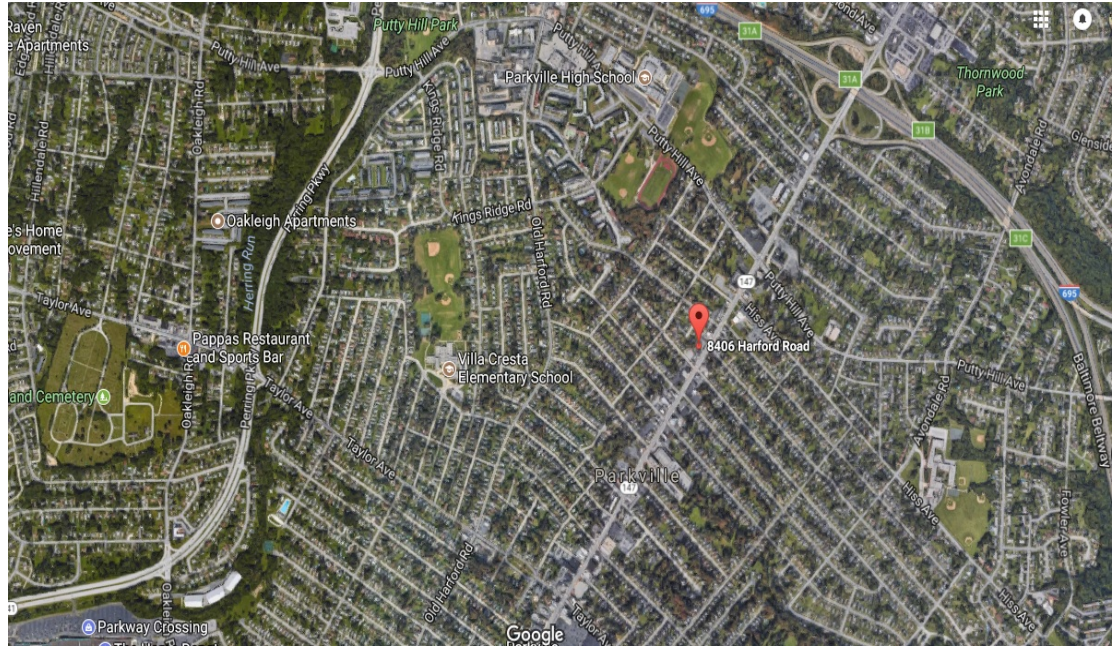
FOR ADDITIONAL INFORMATION, CONTACT

GREGORY FRIEDMAN	443.853.3750	gfriedman@agmcommercial.com
MICHAEL BENDER	443.853.3760	mbender@agmcommercial.com

8406 Harford Road
Parkville, MD 21234



AVAILABLE FOR LEASE



FOR ADDITIONAL INFORMATION, CONTACT

GREGORY FRIEDMAN

443.853.3750

gfriedman@agmcommercial.com

MICHAEL BENDER

443.853.3760

mbender@agmcommercial.com

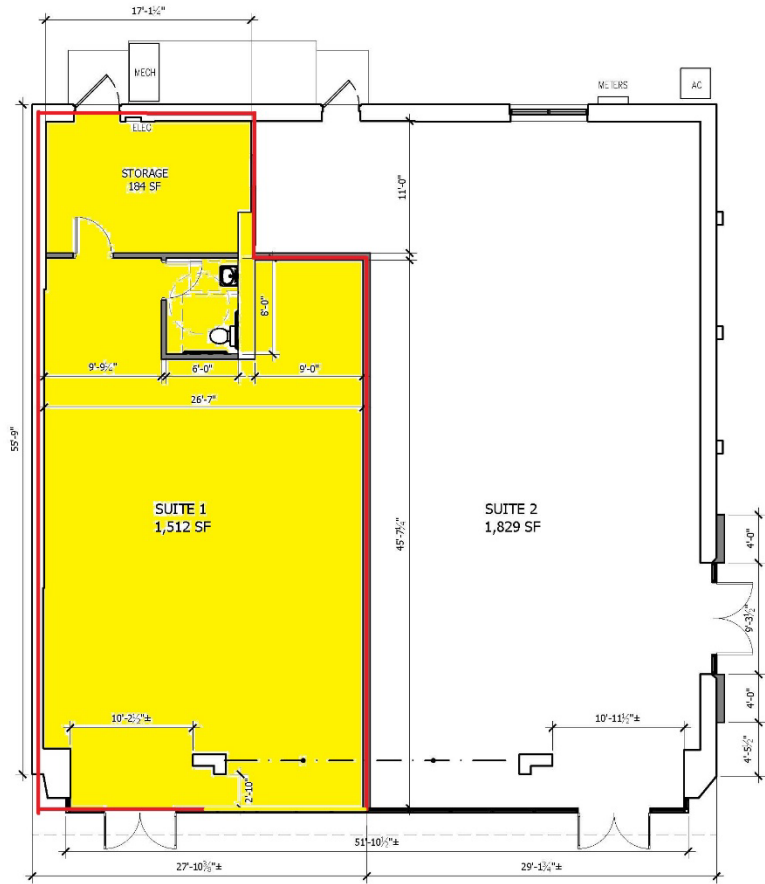
AGM Commercial Real Estate Advisors 921 E. Fort Avenue, Suite 230 Baltimore, MD 21230 www.agmcommercial.com

Although information contained herein is from sources deemed reliable, such information has not been verified and is submitted subject to errors, omissions, change of price, withdrawal or further change without notice. We include projections, opinion, assumptions or estimates for example only, and they may not represent current or future performance of the property. You, along with your tax and legal advisors, should conduct your own investigation of the property and transaction.

8406 Harford Road
Parkville, MD 21234



AVAILABLE FOR LEASE



FOR ADDITIONAL INFORMATION, CONTACT

GREGORY FRIEDMAN

443.853.3750

gfriedman@agmcommercial.com

MICHAEL BENDER

443.853.3760

mbender@agmcommercial.com

AGM Commercial Real Estate Advisors 921 E. Fort Avenue, Suite 230 Baltimore, MD 21230 www.agmcommercial.com

Although information contained herein is from sources deemed reliable, such information has not been verified and is submitted subject to errors, omissions, change of price, withdrawal or further change without notice. We include projections, opinion, assumptions or estimates for example only, and they may not represent current or future performance of the property. You, along with your tax and legal advisors, should conduct your own investigation of the property and transaction.