

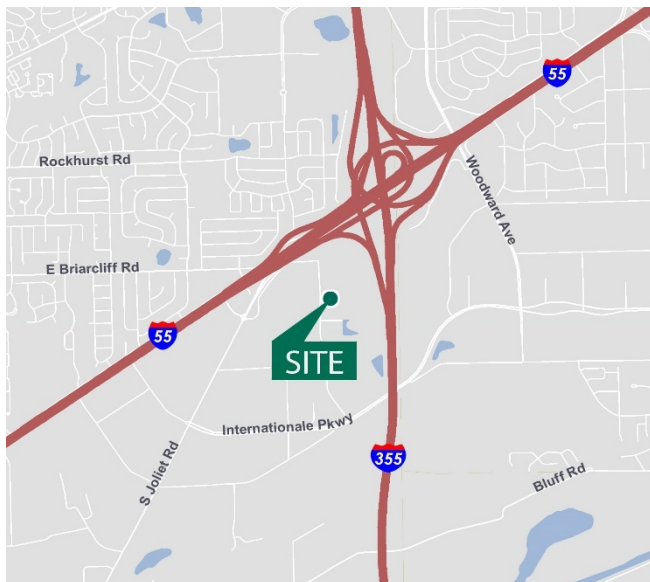
65,581 SF

Industrial Space For Lease



Prologis Woodridge

10441 Beaudin Boulevard, Suite 800
Woodridge, IL 60517 USA



LOCATION

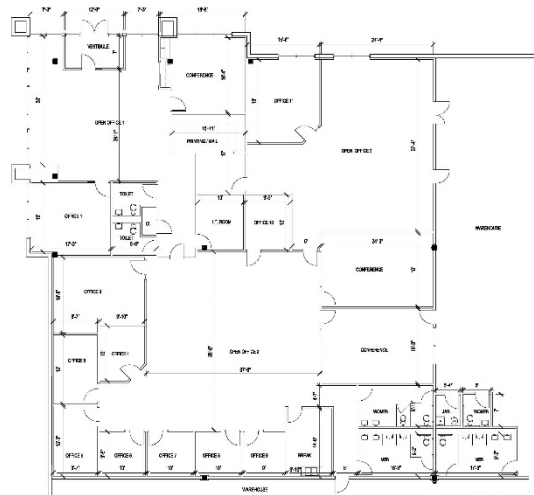
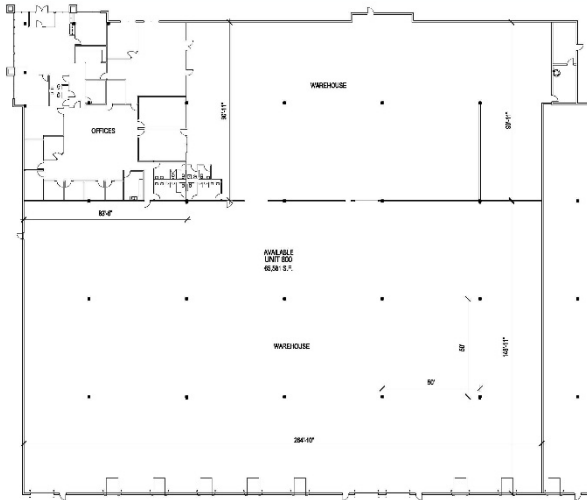
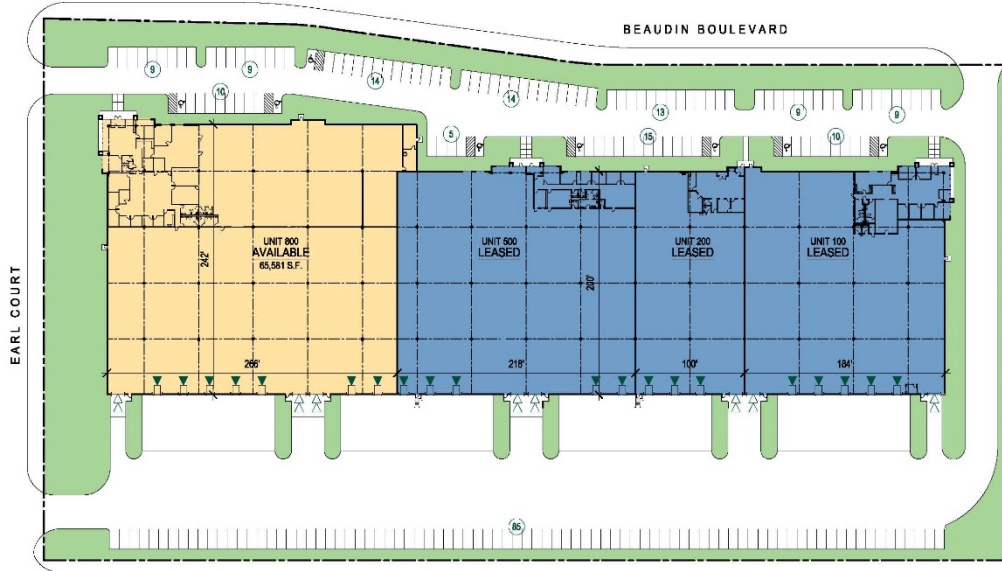
- Chicago's premier industrial park
- Great visibility from I-55
- Access via Joliet and Lemont Roads

FACILITY

- 65,581 sf available
- 9,326 sf of office
- 167,522 sf facility
- 30' clear height
- 7 dock doors with levelers
- 3 (12' x 14') drive-in doors
- 50' x 50' bay spacing
- 6" reinforced concrete floors (4,000 psi)
- ESFR sprinkler system

65,581 SF

Industrial Space For Lease



Lee & Associates

Jeffrey A. Galante
jgalante@lee-associates.com
ph +1 773 355 3007
cell +1 630 363 7605
9450 W. Bryn Mawr, Suite 550
Rosemont, IL 60440 USA

Lee & Associates

Terry M. Grapenthin
tgrape@lee-associates.com
ph +1 773 355 3042
cell +1 708 275 1263
9450 W. Bryn Mawr, Suite 550
Rosemont, IL 60440 USA

Prologis

James Neswold
jneswold@prologis.com
ph +1 847 292 3924
cell +1 847 571 0592
6250 N. River Road, Suite 1100
Rosemont, IL 60018 USA