

MELBOURNE, FL

SUNTREE

1299 BEDFORD DR SUITE A

1,219 Sq. Ft. | 4 Private Offices | Lobby/Waiting Room
Reception Area | Kitchen Area | Storage/Filing Room & Equipment Room

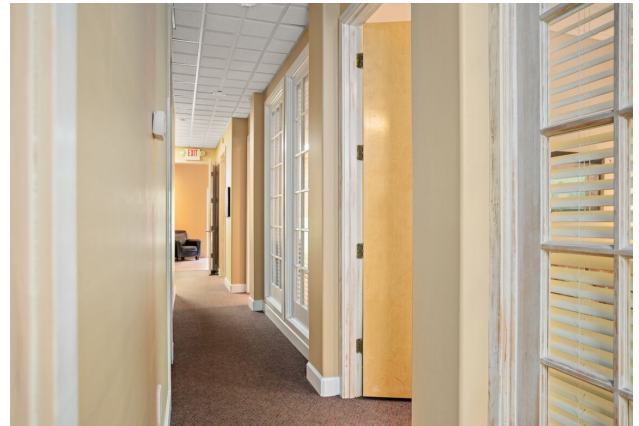


— FOR MORE INFORMATION —

Michele Ronsisvalle
Broker Associate
Stockworth Realty Group

STOCKWORTH
REALTY GROUP

321.917.1458
Mrons@stockworth.com
Stockworth.com



Ideal location, visible from high traffic main thoroughfare Wickham Rd while set back maintaining a sense of privacy. Exactly 1 mile from I-95 and 2 miles from US1, in the heart of Suntree (north Melbourne), near Viera which is exploding with growth. End unit suite overlooking wooded area ensures privacy without sacrificing road frontage and visibility. Modern & updated office suite complete with Lobby/Waiting Room, Reception area, 4 private offices, kitchen area, restroom, storage/filing room and equipment room.

*Ideal investment property or for end user.
Ask for more details.*



Michele Ronsisvalle
321.917.1458
Mrons@stockworth.com