

Highway 92 and Lee Road Extension

Douglasville, GA 30135 | Douglas County



COMMERCIAL SITES FOR SALE

HIGHLIGHTS

- Traffic signal at Lee Road and Highway 92
- Daily traffic count is 30,000 ±
- Graded sites with utilities
- Interchange improvements at Lee Road and I-20
- Lee Road widening project started 2014
- Zoned C-G-C, Douglas County
- Property is located in Highway 92 Village Overlay District
- Adjacent to Tractor Supply, Walgreens and RaceTrac.



Ackerman & Co.

LARRY WOOD
770.913.3902
lwood@ackermanco.net



KYLE GABLE
404.867.3332
kgable@pioneerlandga.com

Highway 92 and Lee Road Extension

Douglasville, Georgia 30135
Douglas County

AERIAL



Ackerman & Co.

LARRY WOOD
770.913.3902
lwood@ackermanco.net



KYLE GABLE
404.867.3332
kgable@pioneerlandga.com

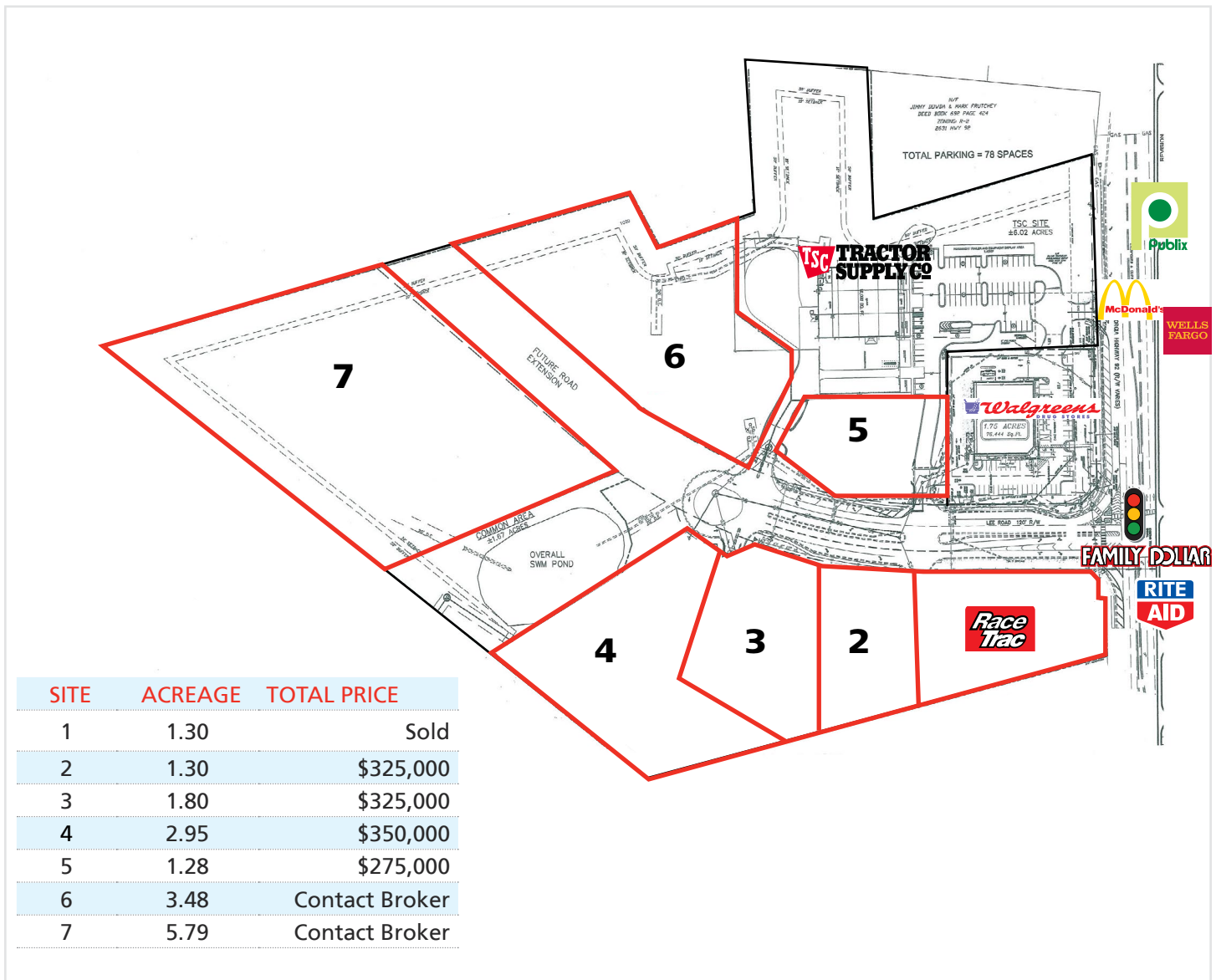
www.ackermanco.com

©2017 Ackerman & Co. All rights reserved. While we have no reason to doubt the accuracy of the information provided from sources we deem reliable, we cannot guarantee it and therefore assume no liability for errors, omissions or changes to this content.

Highway 92 and Lee Road Extension

Douglasville, Georgia 30135
Douglas County

DEVELOPED OUT-PARCEL SITES



DEMOGRAPHICS	1-MILE	3-MILE	5-MILE
Population	5,104	28,948	84,702
Average Household Income	\$58,059	\$68,805	\$67,535
Number of Households	1,713	10,018	29,747

Ackerman & Co.

LARRY WOOD
770.913.3902
lwood@ackermanco.net



KYLE GABLE
404.867.3332
kgable@pioneerlandga.com