

430,188 SF AVAILABLE



120  
161

# CROSSING

1950 W. BARDIN ROAD, ARLINGTON, TX 76017

## PROPERTY DETAILS

**Total Available SF:** 430,188 SF

**Divisible to:** ~ 100,000 SF

**Office:** BTS

**Structural Clear Height:** 32'

**Power:** BTS

**Dock High Doors:** 82 - 9' x 10'

**Oversize Ramp Door:** 4 - 12' x 14'

**Dock Levelers:** BTS

**Trailer Positions:** 41 (expandable)

**Bay Size:** 52' wide x 50' deep

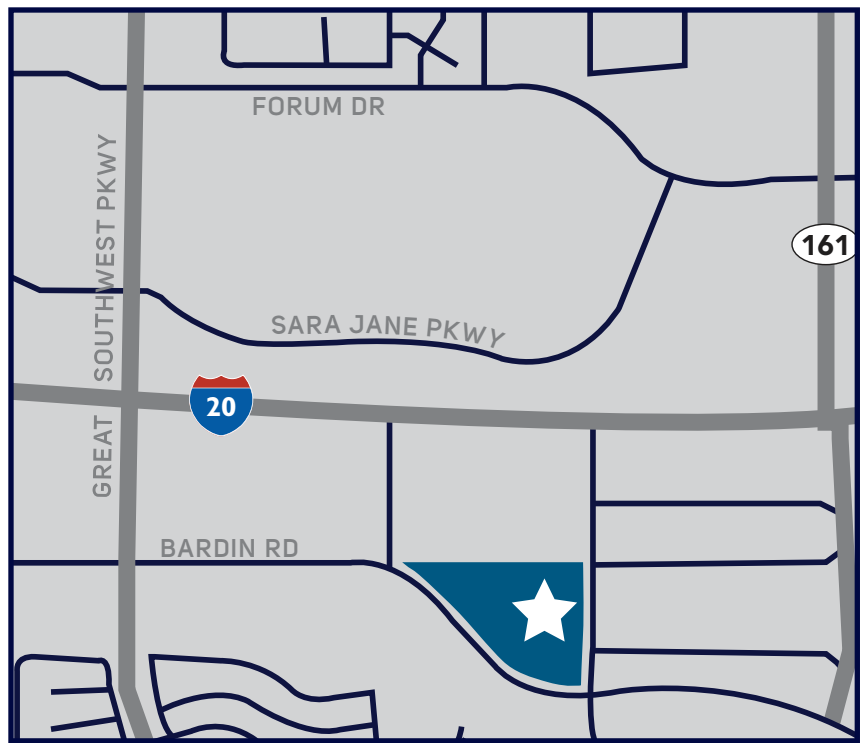
**Building Dimensions:** 860' wide x 500' deep

**Truck Court Depth:** 130 - 140' deep concrete truck apron

**Car Parking Spaces:** 176 (expandable)

**Configuration:** Cross Dock

**Sprinkler:** ESFR



**CANNON GREEN**

cgreen@streamrealty.com  
214.560.5096

**SARAH OZANNE**

sarah.ozanne@streamrealty.com  
214.210.1281

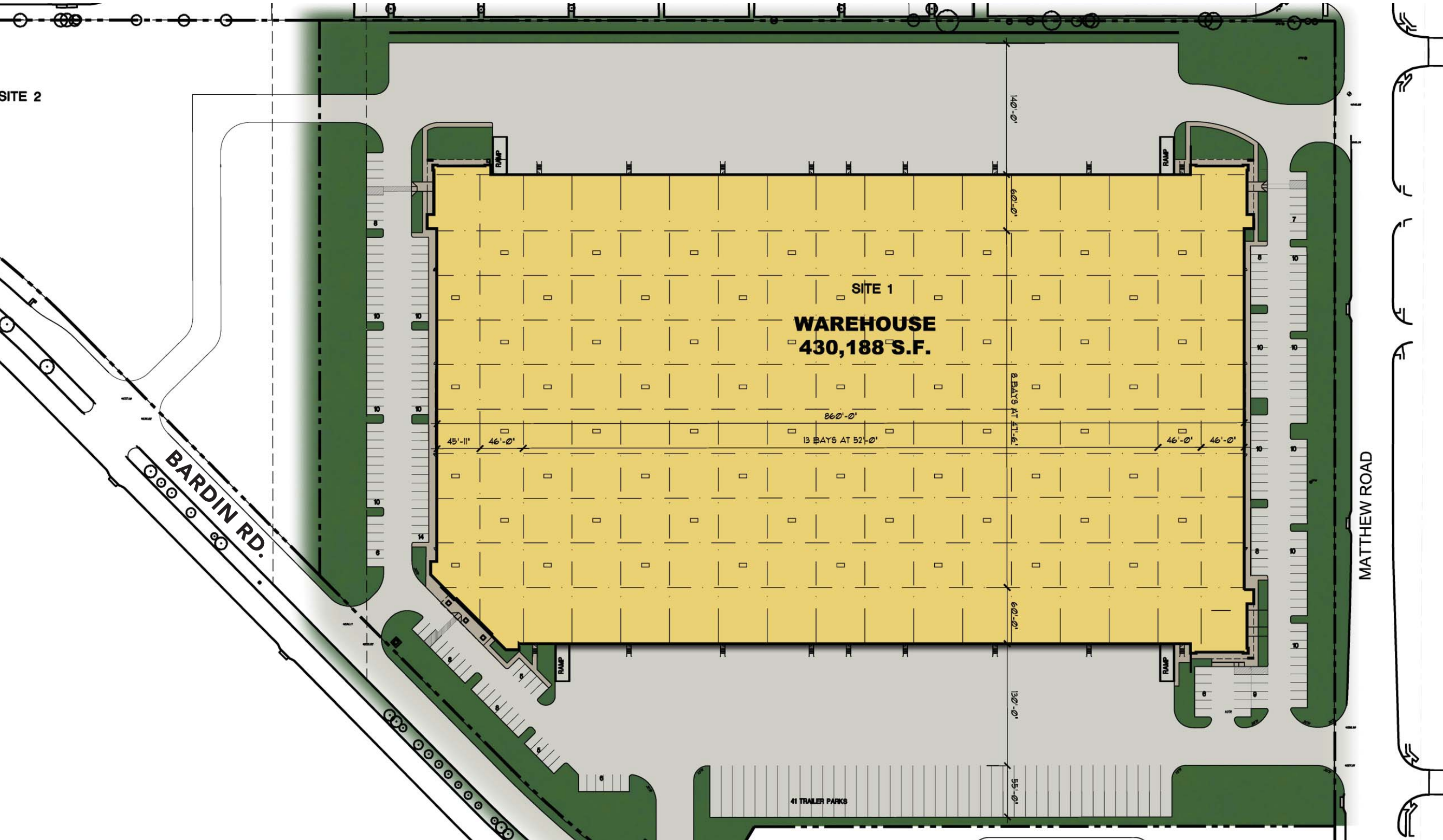
**BLAKE KENDRICK**

bkendrick@streamrealty.com  
214.267.0472

**STREAM**

# 120 161 CROSSING

1950 W. BARDIN ROAD, ARLINGTON, TX 76017



**CANNON GREEN**  
cgreen@streamrealty.com  
214.560.5096

**SARAH OZANNE**  
sarah.ozanne@streamrealty.com  
214.210.1281

**BLAKE KENDRICK**  
bkendrick@streamrealty.com  
214.267.0472

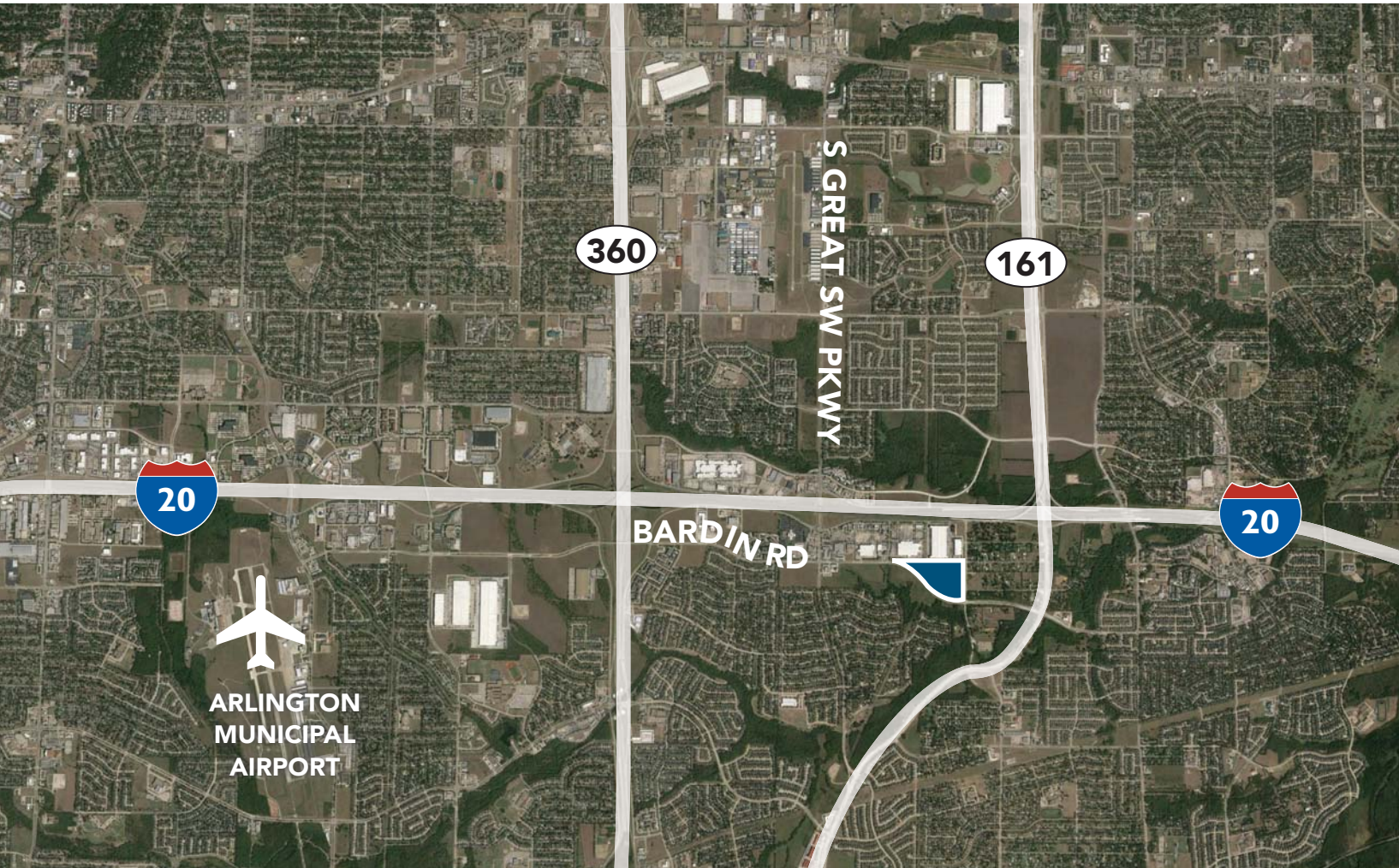




**I20  
161**

# C R S S I N G

1950 W. BARDIN ROAD, ARLINGTON, TX 76017



**ARLINGTON  
MUNICIPAL  
AIRPORT**