

# Prestigious Palo Alto Office Building For Lease

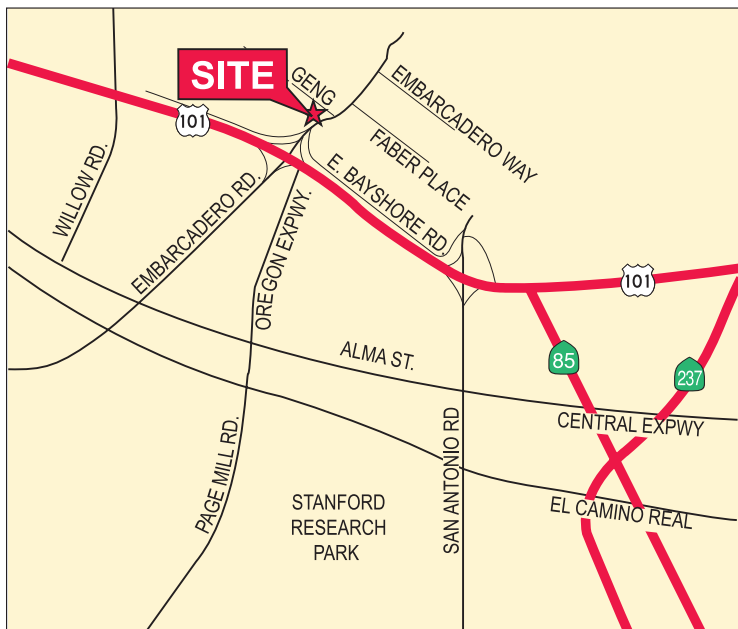
1731 Embarcadero Road, Suite 200

Palo Alto, CA



## ±2,308 SF Available

As exclusive agents, we are pleased to offer the following space:



- ◆ 100% Office - 2 Story Building
- ◆ Newly Renovated Interiors
- ◆ Excellent Access to Highway 101
- ◆ Elevator Access to Second Floor
- ◆ 4/1000 On-Site Parking
- ◆ High Identity Location with Signage
- ◆ Adjacent to the Palo Alto Golf Club
- ◆ \$4.65 NNN



**Brad Van Linge** 650.688.8522 [bvanlinge@ngkf.com](mailto:bvanlinge@ngkf.com) CA RE License #00832009  
**Terry Haught** 650.688.8498 [thaught@ngkf.com](mailto:thaught@ngkf.com) CA RE License #00865107  
245 Lytton Avenue, Suite 150, Palo Alto, CA 94301

[www.ngkf.com](http://www.ngkf.com)

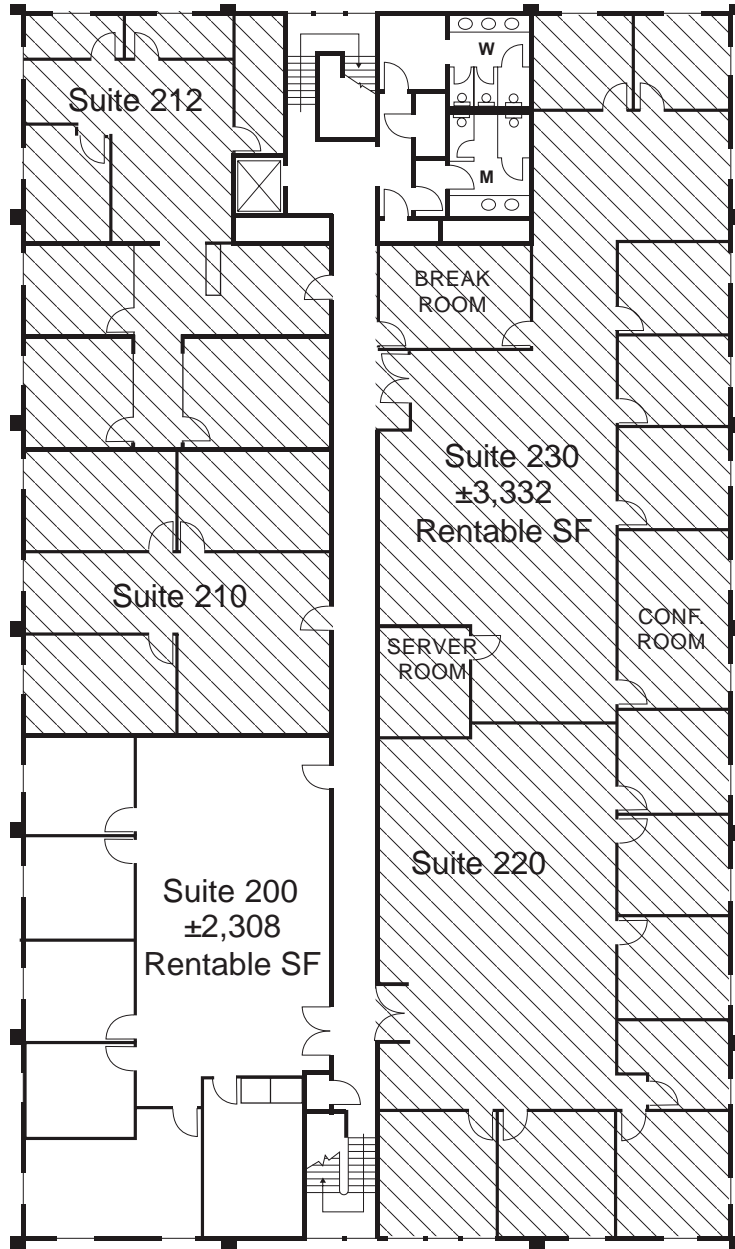
The distributor of this communication is performing acts for which a real estate license is required. The information contained herein has been obtained from sources deemed reliable but has not been verified and no guarantee, warranty or representation, either express or implied, is made with respect to such information. Terms of sale or lease and availability are subject to change or withdrawal without notice.

15-1276 • 04/19

# Prestigious Palo Alto Office Building For Lease

1731 Embarcadero Road, Suite 200

Palo Alto, CA



Second Floor



**Brad Van Linge** 650.688.8522 [bvanlinge@ngkf.com](mailto:bvanlinge@ngkf.com) CA RE License #00832009  
**Terry Haught** 650.688.8498 [thaught@ngkf.com](mailto:thaught@ngkf.com) CA RE License #00865107  
245 Lytton Avenue, Suite 150, Palo Alto, CA 94301

[www.ngkf.com](http://www.ngkf.com)

The distributor of this communication is performing acts for which a real estate license is required. The information contained herein has been obtained from sources deemed reliable but has not been verified and no guarantee, warranty or representation, either express or implied, is made with respect to such information. Terms of sale or lease and availability are subject to change or withdrawal without notice.