



LAKE MERRITT  
PLAZA

**DISTINGUISHED • MODERN • EFFICIENT**

THE HEART OF UPTOWN



1999 HARRISON

# EXPERIENCE LAKE MERRITT PLAZA

---

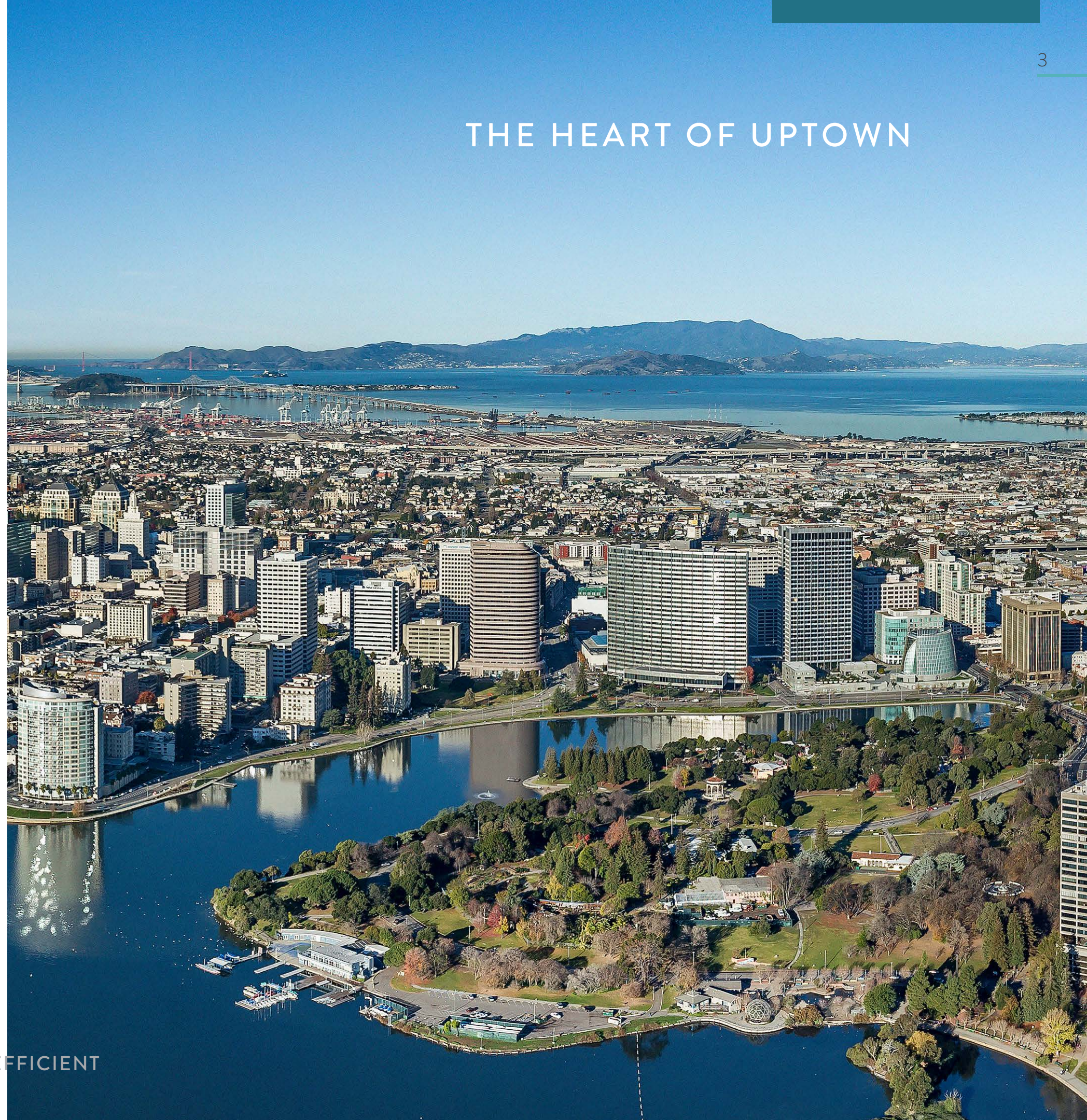
Welcome to Lake Merritt Plaza, the 27-story 1999 Harrison Street landmark offering stunning panoramic 360 views of Lake Merritt, Berkeley hills, Downtown Oakland, and the San Francisco Skyline.

Experience a location like no other; to work, play and live in the best location in the popular Uptown District of Downtown Oakland.

Lake Merritt Plaza is one of the highest quality buildings in the East Bay, with a striking architectural unique design and located in the popular Uptown District of Downtown Oakland.

DISTINGUISHED • MODERN • EFFICIENT

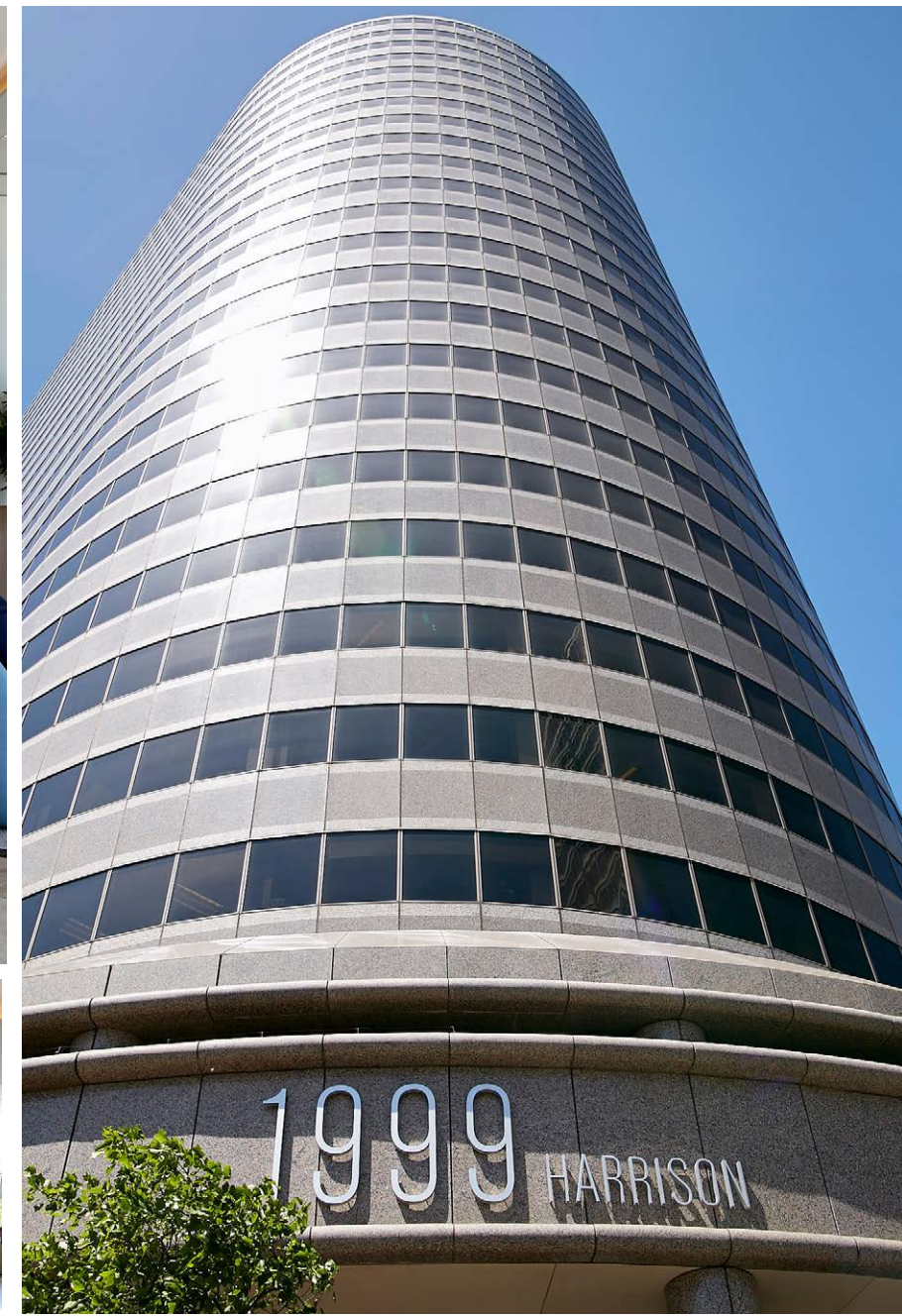
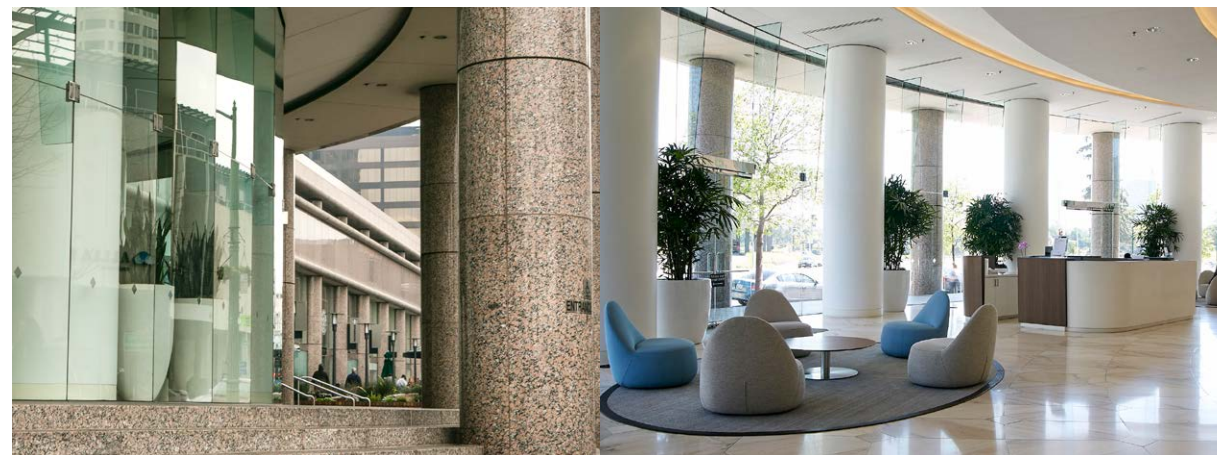
## THE HEART OF UPTOWN





DISTINGUISHED • MODERN • EFFICIENT

# THE HEART OF UPTOWN





DISTINGUISHED • MODERN • EFFICIENT

# CLASS "A"

## BUILDING AT YOUR FINGERTIPS



### VIEWS

Panoramic views of the lake, Oakland and Berkeley hills



### CITY SKYLINE

Views to the San Francisco and Oakland city skyline



### BART

Adjacent to 19th Street Uptown BART station



### BIKE STORAGE

Secure bike parking and repair station



### NEW RETAIL & OUTDOOR SEATING AREAS



### LOBBY

Newly renovated lobby



### NEW ELEVATOR SYSTEMS & CABS

Newly renovated Destination Dispatch elevator service and systems

# A LANDMARK IN THE HEART OF UPTOWN

### Uptown Icons & Entertainment

- 1 Fox Theater
- 2 Paramount Theater
- 3 Kaiser Center Public Garden
- 4 Snow Park
- 5 Emporium Oakland

### Bars

- 6 Drexl
- 7 Dogwood
- 8 Make Westing
- 9 Woods Bar
- 10 Mad Oak
- 11 Layover
- 12 Luka's Taproom & Lounge
- 13 Mau
- 14 Here's How
- 15 Bar Shiru
- 16 Hello Stranger
- 17 The Miranda
- 18 The Athletic Club
- 19 19th Street Station
- 20 Bar 355

### Restaurants & Lunch Bites

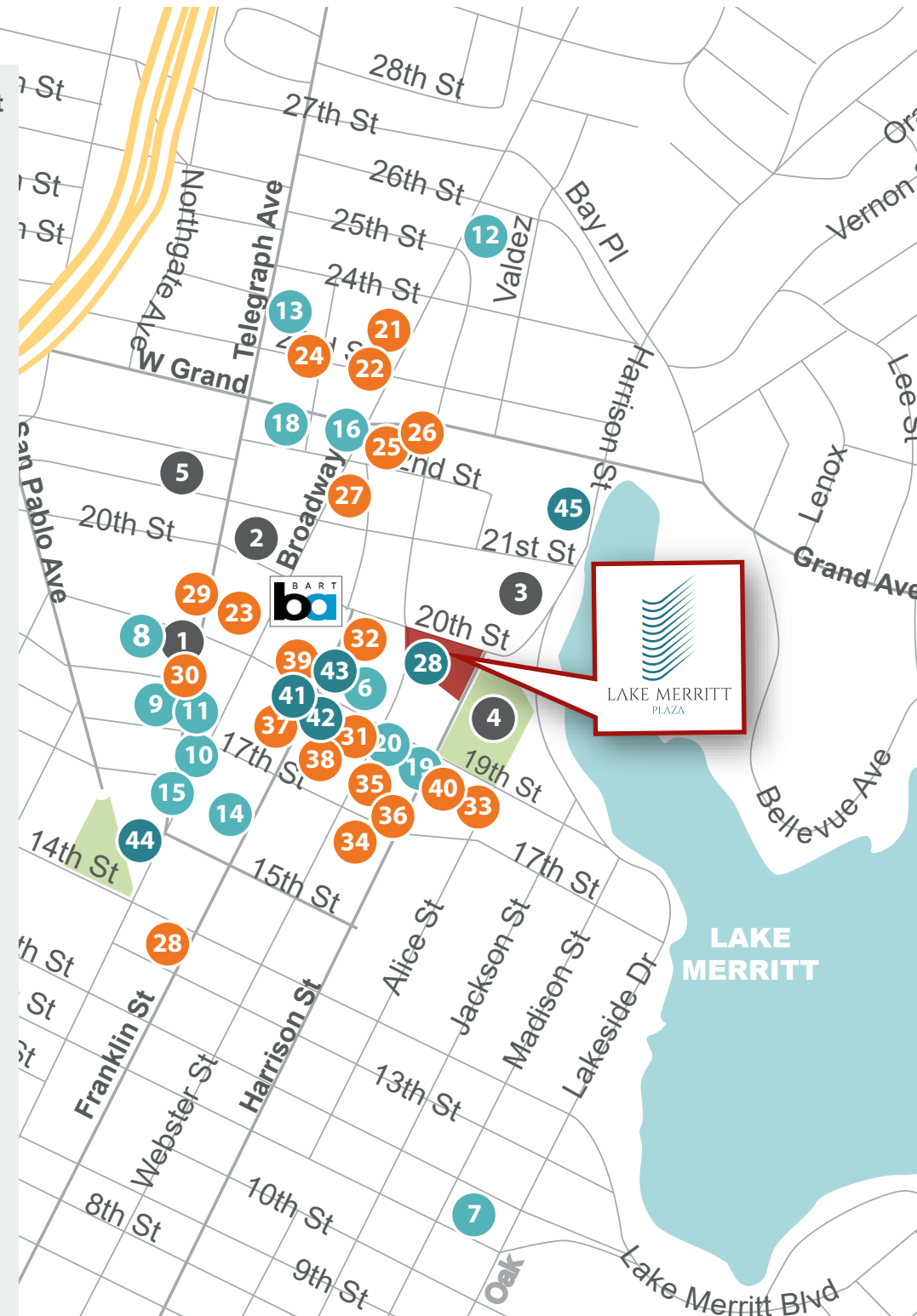
- 21 Drake's Brewery
- 22 Flora

### Restaurants & Lunch Bites

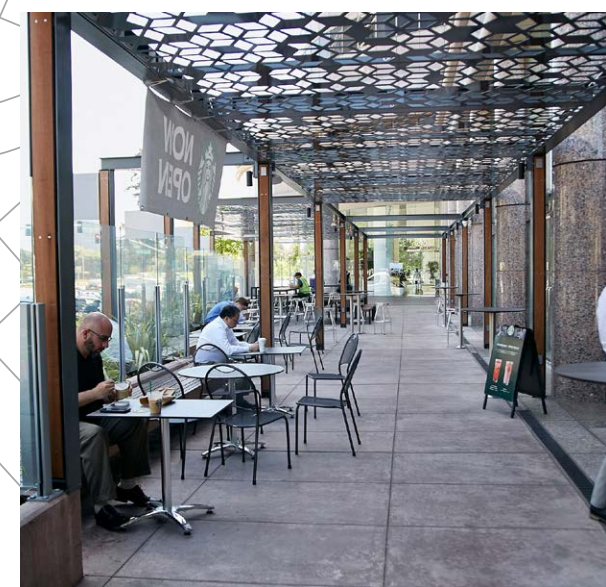
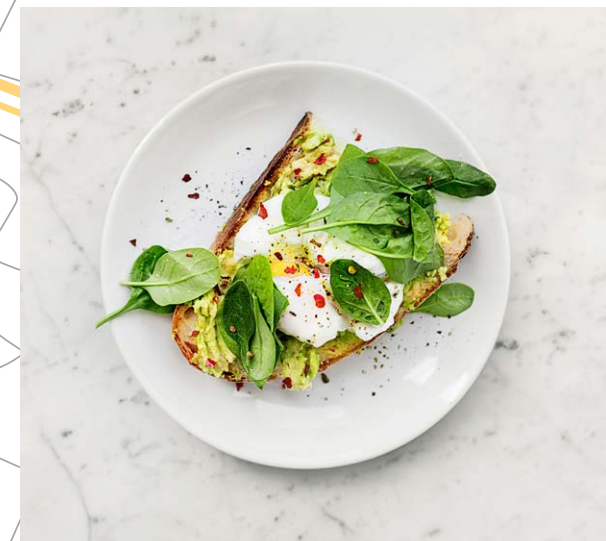
- 23 Duende
- 24 Parlour
- 25 Ike's Place
- 26 Oakland Athletic Club Bar & Restaurant
- 27 The Gastropig
- 28 Mockingbird
- 29 Dosa by Dosa
- 30 Mixt
- 31 Brown Sugar Kitchen
- 32 Falafel Boy
- 33 Burma Bear
- 34 Pho 84
- 35 Aburaya Japanese
- 36 Liba Falafel
- 37 The Lunch Box
- 38 Lotus Falafel & Shawerma
- 39 Genji Japanese
- 40 Molcajete Cocina

### Coffee

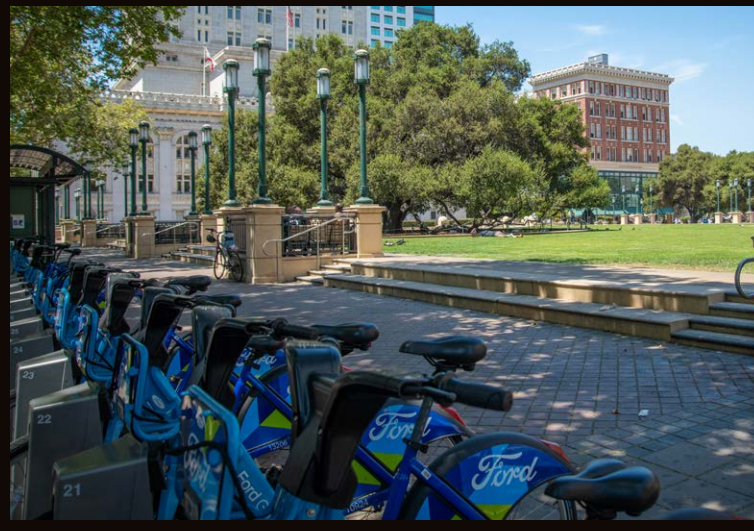
- 41 Modern Coffee
- 42 Aroma Café
- 43 Awaken Café
- 44 City Lights Cafe
- 45 Starbucks



DISTINGUISHED • MODERN • EFFICIENT



# TRANSPORTATION AT YOUR FOOTSTEPS



DISTINGUISHED • MODERN • EFFICIENT



INTERSTATE 980



CITY CENTER STATION

- 19 MIN
- 7 MIN



BART STATION 19TH STREET

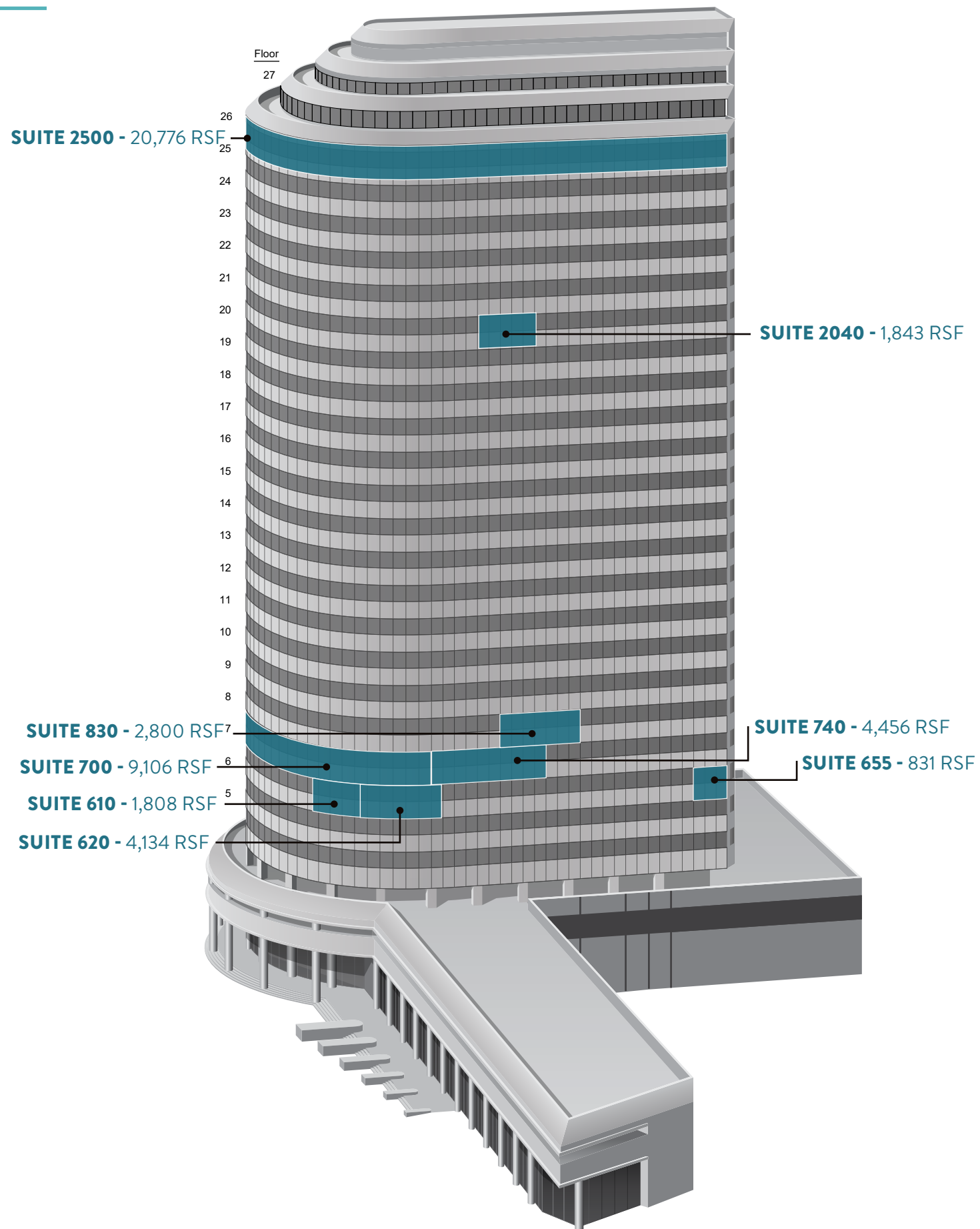
- 5 MIN
- 2 MIN

# UPTOWN OAKLAND HOTTEST NEW NEIGHBORHOOD

Downtown Oakland's hottest new neighborhood is driving much of the exciting change and growth in Oakland's Central Business District. The neighborhood includes live music venues, new bars, casual and top tier restaurants, brew pubs and multiple new office and residential developments.



DISTINGUISHED • MODERN • EFFICIENT



DISTINGUISHED • MODERN • EFFICIENT

## FIND YOUR SPACE

### SUITE 610 – 1,808 RSF

Great corner location; 2 private offices, conference room, kitchen/break room.

### SUITE 620 – 4,134 RSF

4 private offices, kitchen, open ceiling creative space.

### SUITE 655 – 831 RSF

Rare small suite.

### SUITE 700 – 9,106 RSF

Double door entry off elevator, lake view space. Current law firm build, 17+ private offices, conference rooms, kitchen, open area.

### SUITE 740 - 4,456 RSF

Creative build-out – Open ceiling, open kitchen, conference room, 3 private offices.

### SUITE 830 - 2,800 RSF

Creative tech space with open ceiling design; 2 private offices, conference room, open kitchen, open area.

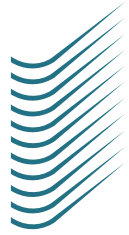
### SUITE 2040 - 1,843 RSF

Small suite on the upper floor; 2 private offices, kitchen, open area.

### SUITE 2500 - 20,775 RSF

Full floor, fully open space, top floor, incredible views – San Francisco, Oakland skyline and Lake Merritt views.

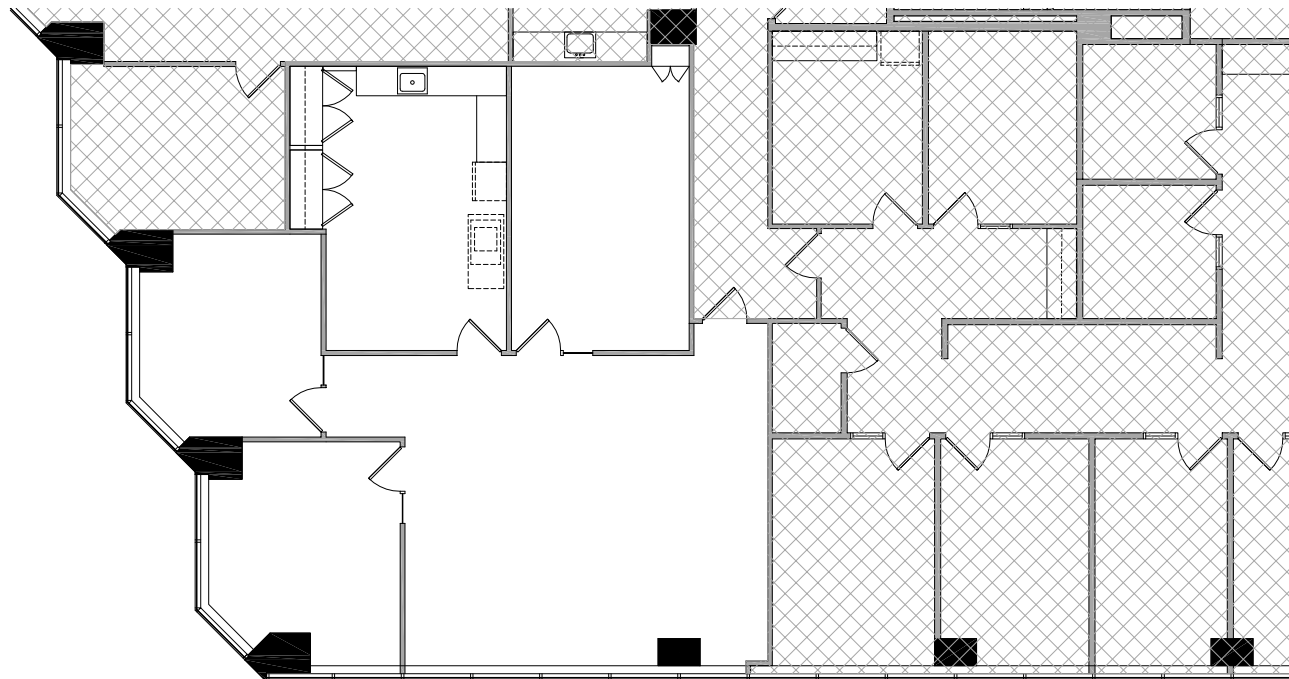




LAKE MERRITT  
PLAZA

## SUITE 610 - 1,808 RSF

Great corner location; 2 private offices, conference room, kitchen/break room.

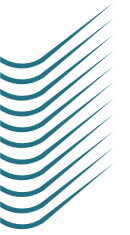


[lakemerritt-plaza.com](http://lakemerritt-plaza.com)

**Charles F. Allen, LEED AP**  
Principal, Managing Director  
RE Lic #01158267  
[charlie.allen@avisonyoung.com](mailto:charlie.allen@avisonyoung.com)  
510.333.8477

**Anthony Shell, LEED® AP**  
Principal  
RE Lic #01743033  
[anthony.shell@avisonyoung.com](mailto:anthony.shell@avisonyoung.com)  
510.254.4263

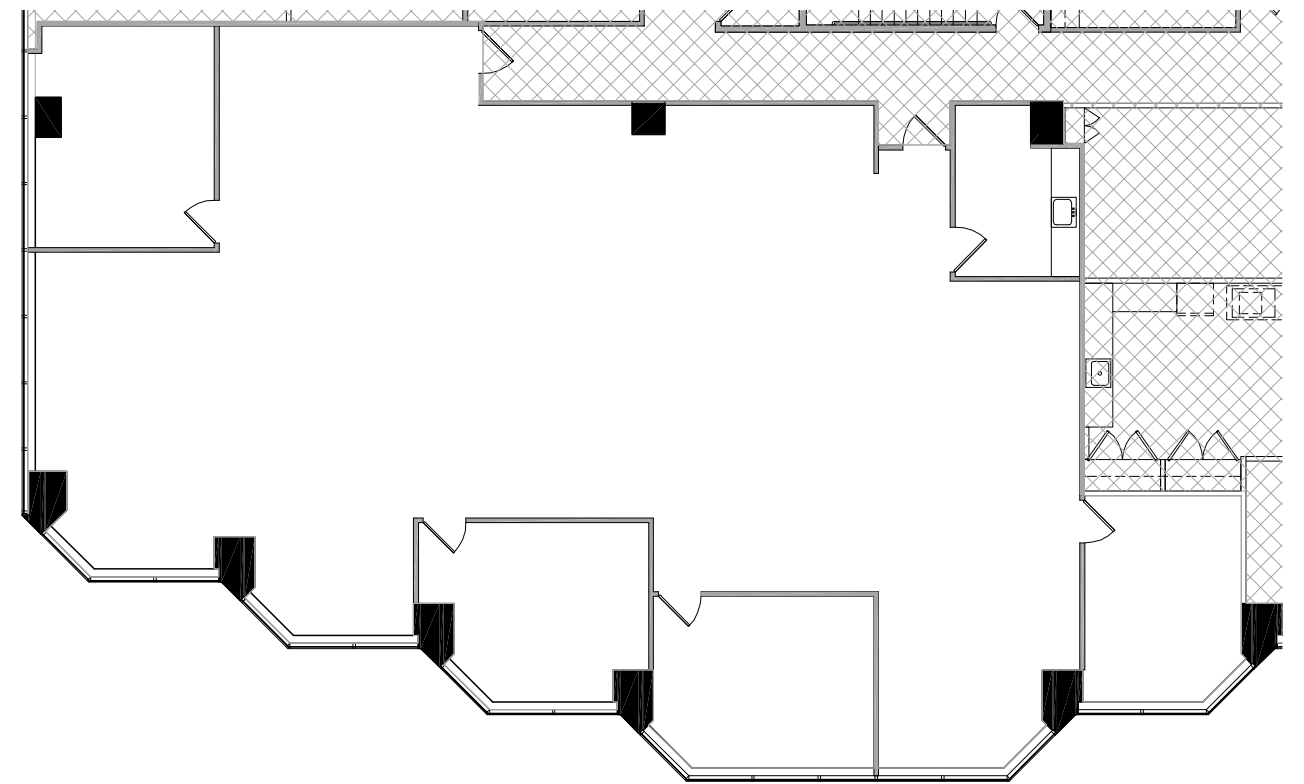
**Amber Merrigan**  
Vice President  
RE Lic #01905162  
[amber.merrigan@avisonyoung.com](mailto:amber.merrigan@avisonyoung.com)  
510.254.4267



LAKE MERRITT  
PLAZA

## SUITE 620 - 4,134 RSF

4 private offices, kitchen, open ceiling creative space.



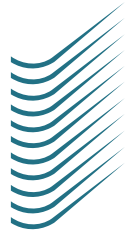
[lakemerritt-plaza.com](http://lakemerritt-plaza.com)

**Charles F. Allen, LEED AP**  
Principal, Managing Director  
RE Lic #01158267  
[charlie.allen@avisonyoung.com](mailto:charlie.allen@avisonyoung.com)  
510.254.4260

**Anthony Shell, LEED® AP**  
Principal  
RE Lic #01743033  
[anthony.shell@avisonyoung.com](mailto:anthony.shell@avisonyoung.com)  
510.254.4263

**Amber Merrigan**  
Vice President  
RE Lic #01905162  
[amber.merrigan@avisonyoung.com](mailto:amber.merrigan@avisonyoung.com)  
510.254.4267

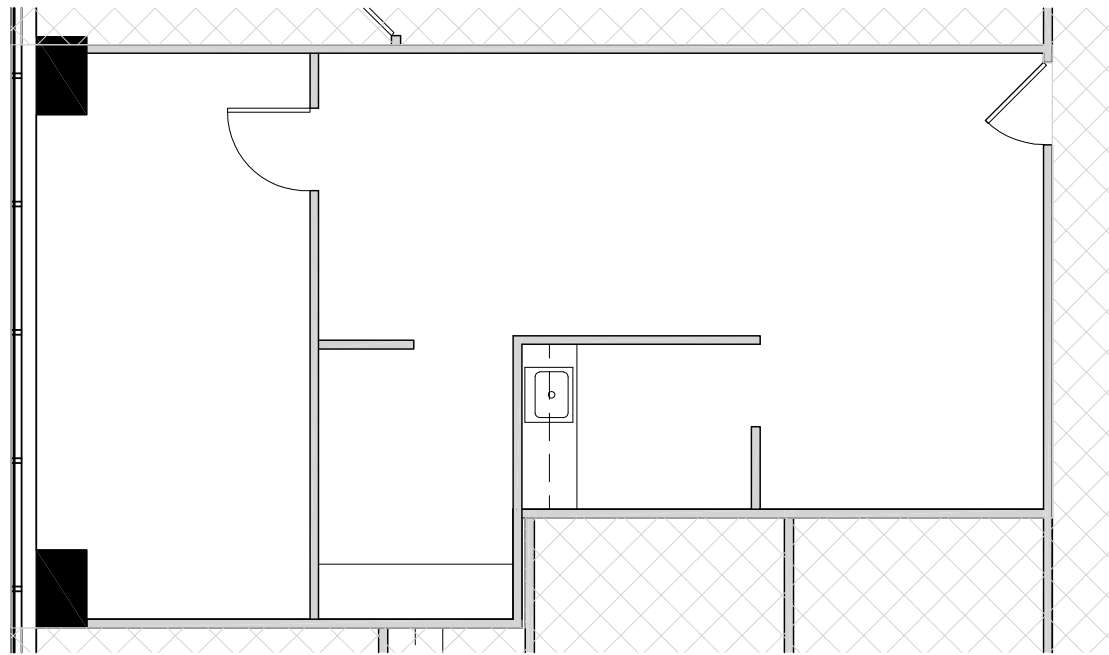




LAKE MERRITT  
PLAZA

## SUITE 655 - 831 RSF

Rare small suite.

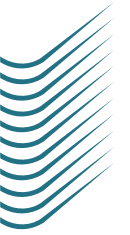


[lakemerritt-plaza.com](http://lakemerritt-plaza.com)

**Charles F. Allen, LEED AP**  
Principal, Managing Director  
RE Lic #01158267  
[charlie.allen@avisonyoung.com](mailto:charlie.allen@avisonyoung.com)  
510.333.8477

**Anthony Shell, LEED® AP**  
Principal  
RE Lic #01743033  
[anthony.shell@avisonyoung.com](mailto:anthony.shell@avisonyoung.com)  
510.254.4263

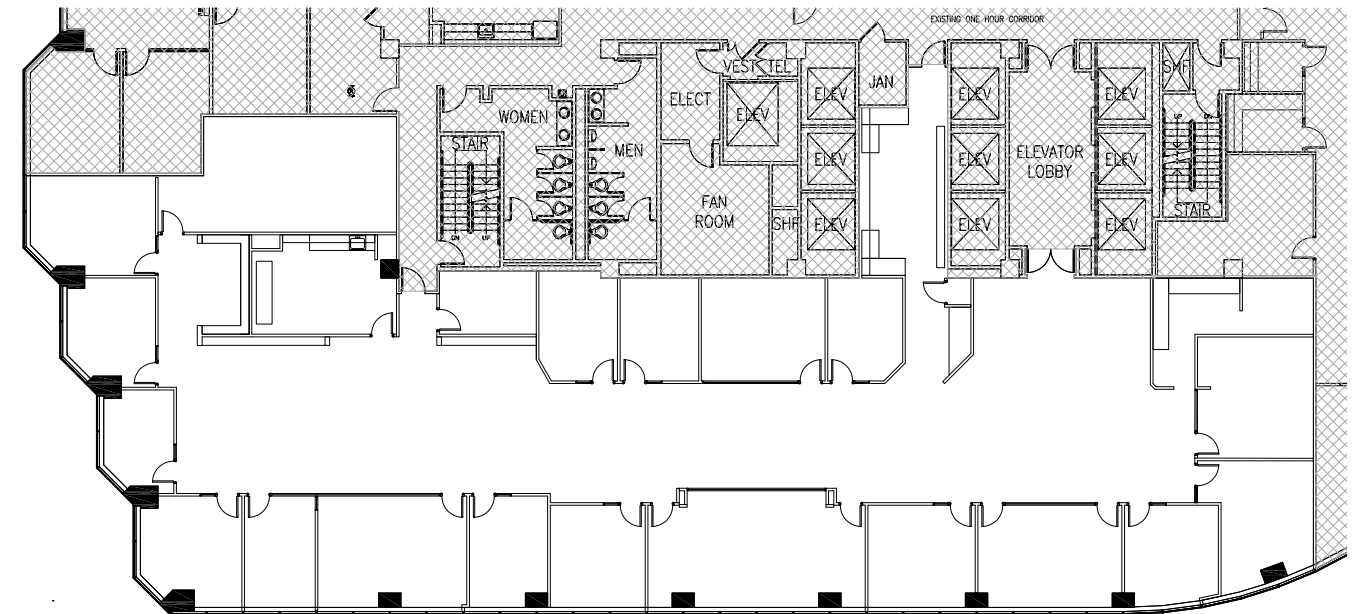
**Amber Merrigan**  
Vice President  
RE Lic #01905162  
[amber.merrigan@avisonyoung.com](mailto:amber.merrigan@avisonyoung.com)  
510.254.4267



LAKE MERRITT  
PLAZA

## SUITE 700 - 9,106 RSF

Double door entry off elevator, lake view space. Current law firm build, 17+ private offices, conference rooms, kitchen, open area.



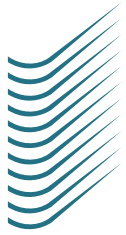
[lakemerritt-plaza.com](http://lakemerritt-plaza.com)

**Charles F. Allen, LEED AP**  
Principal, Managing Director  
RE Lic #01158267  
[charlie.allen@avisonyoung.com](mailto:charlie.allen@avisonyoung.com)  
510.254.4260

**Anthony Shell, LEED® AP**  
Principal  
RE Lic #01743033  
[anthony.shell@avisonyoung.com](mailto:anthony.shell@avisonyoung.com)  
510.254.4263

**Amber Merrigan**  
Vice President  
RE Lic #01905162  
[amber.merrigan@avisonyoung.com](mailto:amber.merrigan@avisonyoung.com)  
510.254.4267

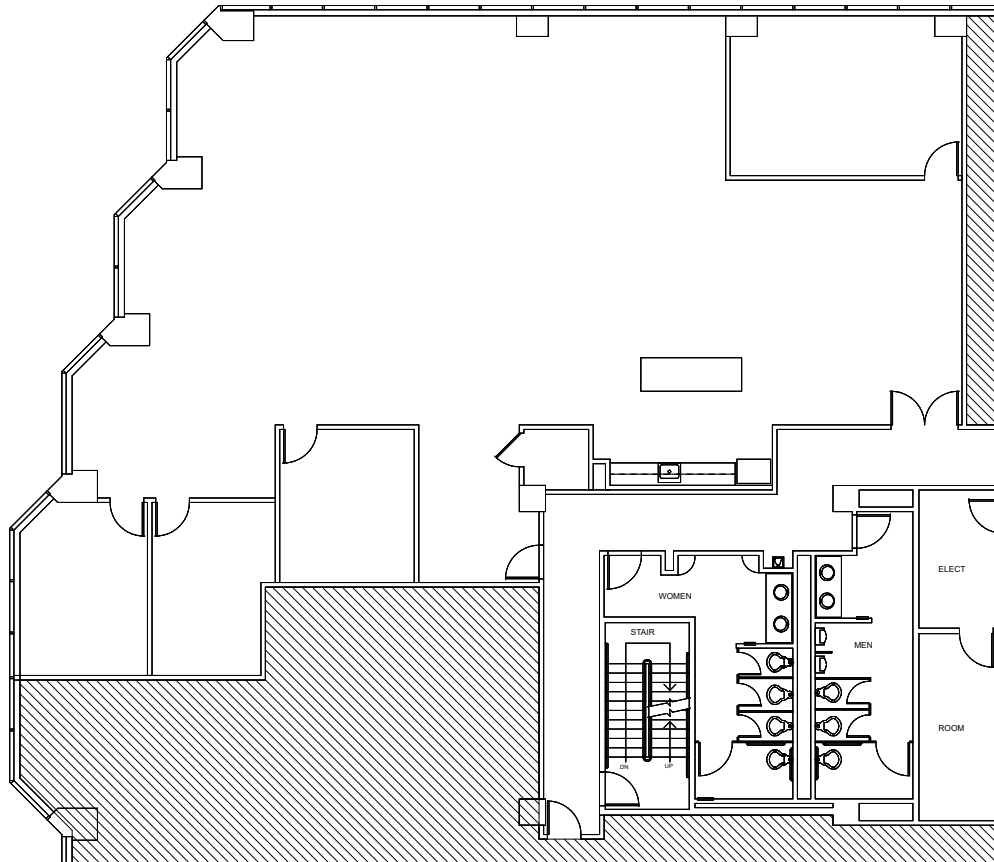




LAKE MERRITT  
PLAZA

## SUITE 740 - 4,456 RSF

Creative build-out – Open ceiling, open kitchen, conference room, 3 private offices.

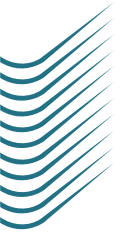


[lakemerritt-plaza.com](http://lakemerritt-plaza.com)

**Charles F. Allen, LEED AP**  
Principal, Managing Director  
RE Lic #01158267  
[charlie.allen@avisonyoung.com](mailto:charlie.allen@avisonyoung.com)  
510.333.8477

**Anthony Shell, LEED® AP**  
Principal  
RE Lic #01743033  
[anthony.shell@avisonyoung.com](mailto:anthony.shell@avisonyoung.com)  
510.254.4263

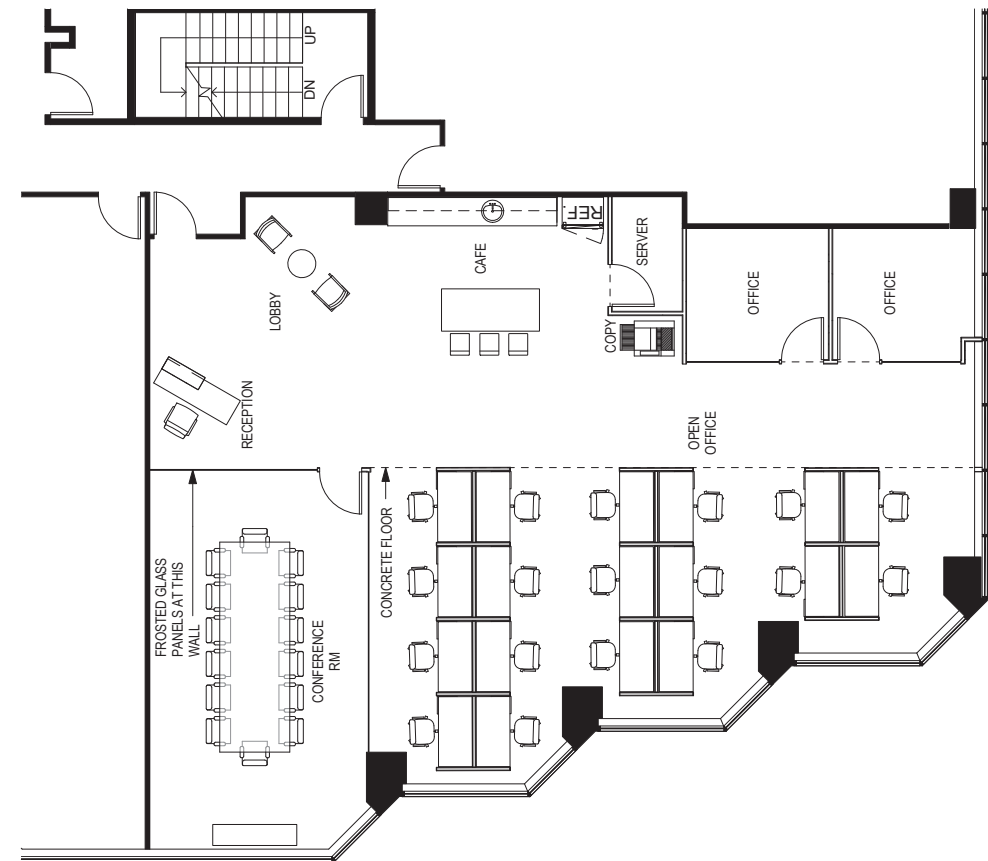
**Amber Merrigan**  
Vice President  
RE Lic #01905162  
[amber.merrigan@avisonyoung.com](mailto:amber.merrigan@avisonyoung.com)  
510.254.4267



LAKE MERRITT  
PLAZA

## SUITE 830 - 2,800 RSF

Creative tech space with open ceiling design; 2 private offices, conference room, open kitchen, open area.



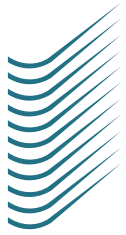
[lakemerritt-plaza.com](http://lakemerritt-plaza.com)

**Charles F. Allen, LEED AP**  
Principal, Managing Director  
RE Lic #01158267  
[charlie.allen@avisonyoung.com](mailto:charlie.allen@avisonyoung.com)  
510.254.4260

**Anthony Shell, LEED® AP**  
Principal  
RE Lic #01743033  
[anthony.shell@avisonyoung.com](mailto:anthony.shell@avisonyoung.com)  
510.254.4263

**Amber Merrigan**  
Vice President  
RE Lic #01905162  
[amber.merrigan@avisonyoung.com](mailto:amber.merrigan@avisonyoung.com)  
510.254.4267

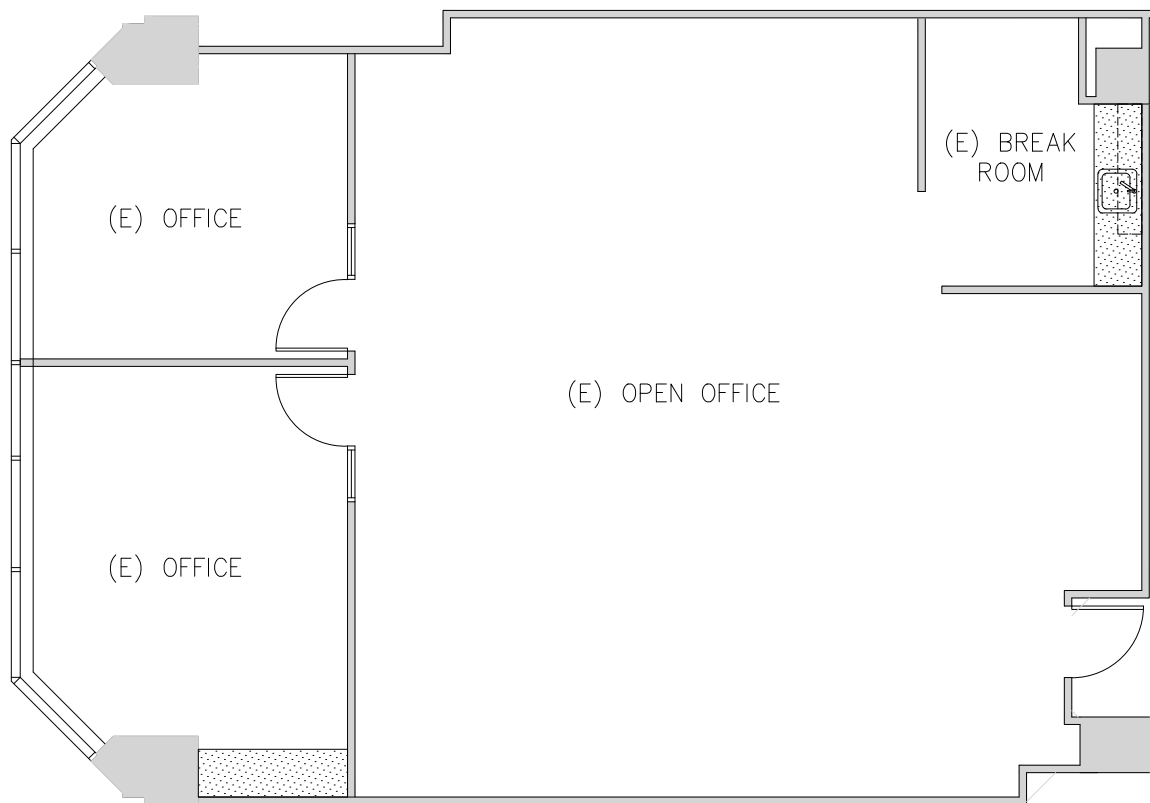




LAKE MERRITT  
PLAZA

## SUITE 2040 - 1,843 RSF

Small suite on the upper floor; 2 private offices, kitchen, open area.

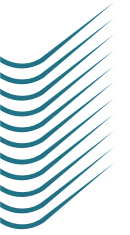


[lakemerritt-plaza.com](http://lakemerritt-plaza.com)

**Charles F. Allen, LEED AP**  
Principal, Managing Director  
RE Lic #01158267  
[charlie.allen@avisonyoung.com](mailto:charlie.allen@avisonyoung.com)  
510.333.8477

**Anthony Shell, LEED® AP**  
Principal  
RE Lic #01743033  
[anthony.shell@avisonyoung.com](mailto:anthony.shell@avisonyoung.com)  
510.254.4263

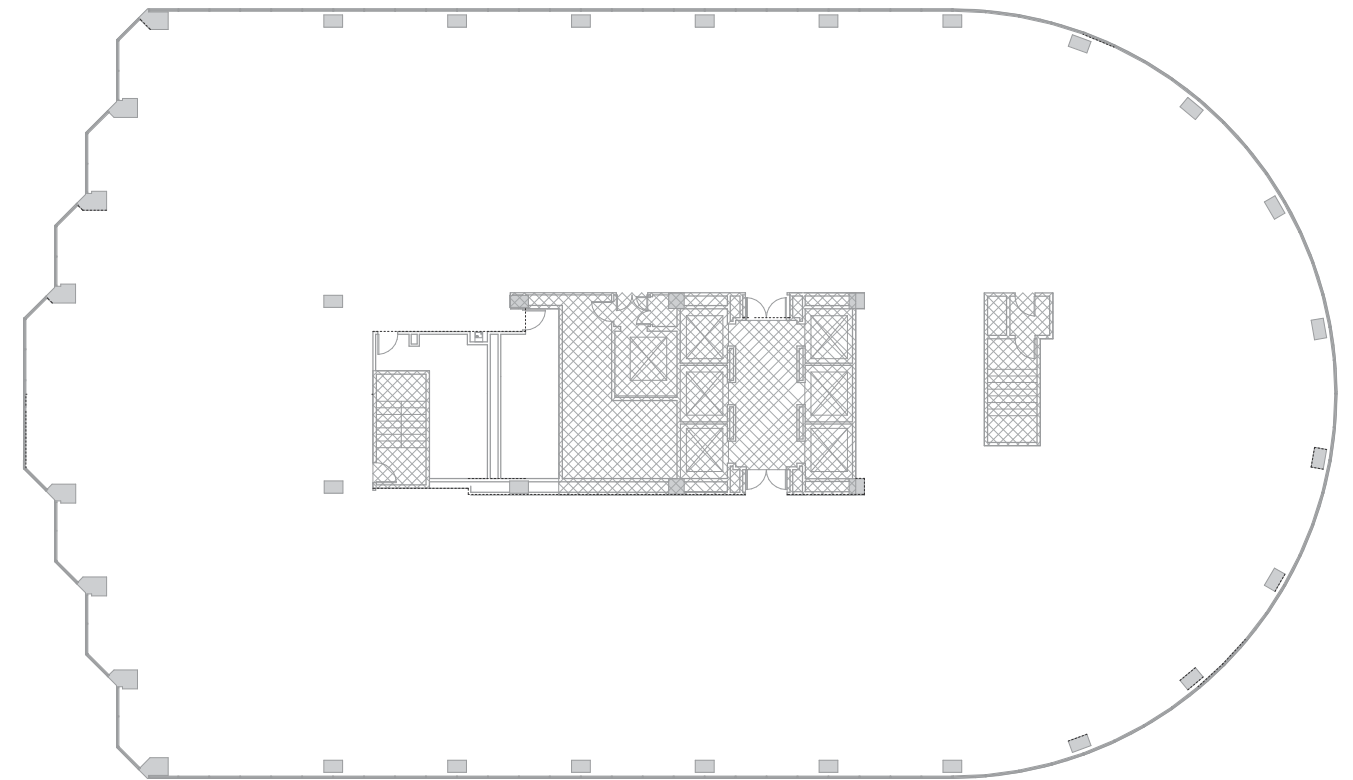
**Amber Merrigan**  
Vice President  
RE Lic #01905162  
[amber.merrigan@avisonyoung.com](mailto:amber.merrigan@avisonyoung.com)  
510.254.4267



LAKE MERRITT  
PLAZA

## SUITE 2500 - 20,775 RSF

Full floor, fully open space, top floor, incredible views – San Francisco, Oakland skyline and Lake Merritt views.



[lakemerritt-plaza.com](http://lakemerritt-plaza.com)

**Charles F. Allen, LEED AP**  
Principal, Managing Director  
RE Lic #01158267  
[charlie.allen@avisonyoung.com](mailto:charlie.allen@avisonyoung.com)  
510.254.4260

**Anthony Shell, LEED® AP**  
Principal  
RE Lic #01743033  
[anthony.shell@avisonyoung.com](mailto:anthony.shell@avisonyoung.com)  
510.254.4263

**Amber Merrigan**  
Vice President  
RE Lic #01905162  
[amber.merrigan@avisonyoung.com](mailto:amber.merrigan@avisonyoung.com)  
510.254.4267





LAKE MERRITT  
PLAZA

**DISTINGUISHED • MODERN • EFFICIENT**

THE HEART OF UPTOWN