



Hoffman Building

108 E. 38th Street, Sioux Falls, SD

Property Features

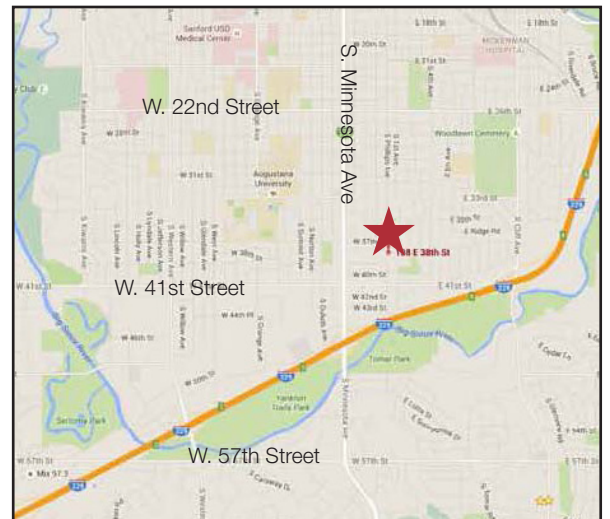
- Main level office space
- Common area conference room for tenant's use
- Building receptionist
- Internet included
- Illuminated exterior monument sign
- Inside building directory
- Exterior security camera
- On-site management

Price

- Lease rate is \$500/month gross

Location

- Located on E. 38th Street just east of Phillips Avenue
- Great Central location
- Neighbors include Hy-Vee, All American Gymnastics GreatLife Golf & Fitness, Sioux Falls School District Instructional Planning Center



Michael Martin

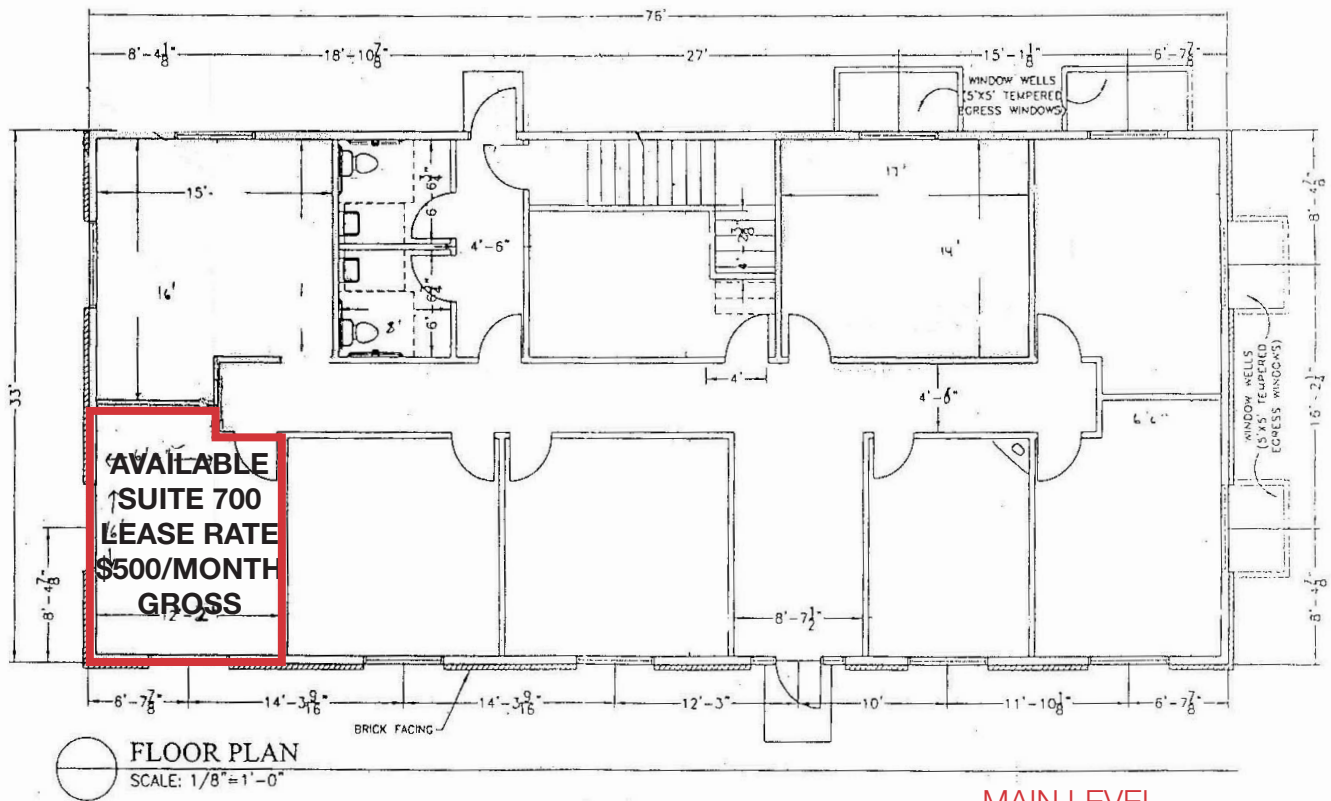
+1 605 444 7105 direct

+1 605 261 2777 mobile

mmartin@naisiouxfalls.com

For Lease

Hoffman Building Sioux Falls, SD



MAIN LEVEL



For Lease

Hoffman Building Sioux Falls, SD

