

FOR SALE/LEASE > EXCELLENT OWNER/USER OPPORTUNITY

9930 Evergreen Way, Building X, Everett, WA

Everett Business Park, Building X



Building Available for Purchase

- > Purchase price: \$3,200,000 (\$175.33/SF)
- > Total building size: 18,251 SF
- > Space available to owner/user: 9,381 SF
- > Long-term leases in place on 8,870 SF

Space Available for Lease

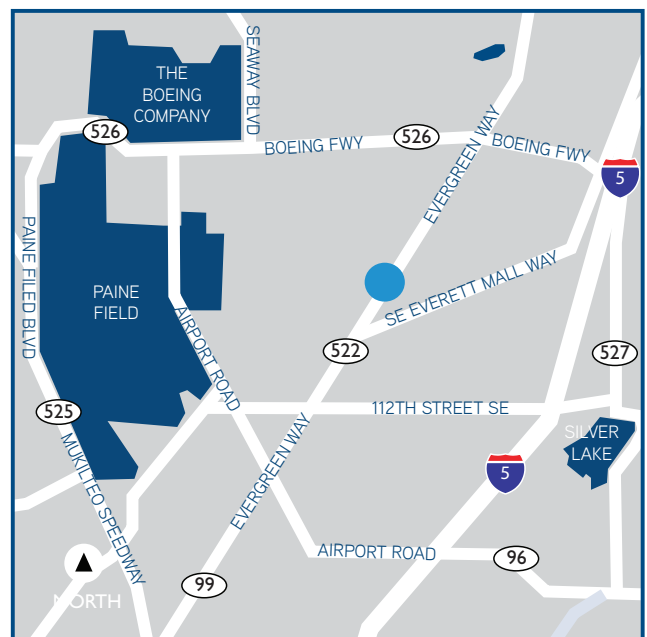
- > 9,381 SF total, divisible to:
 - 1,824 SF
 - 2,542 SF
 - 5,015 SF
- > Lease rate: \$14.50/SF/Year, NNN

Features

- > Total parking spaces: 103 (5.64/1,000 RSF)
- > Close proximity to Boeing and Everett
- > Zoning C-1, city of Everett

Location

- > Close proximity to Boeing - Everett
- > Visibility along Highway 99/Evergreen Way



Derek Heed
Senior Vice President
425 453 3133
derek.heed@colliers.com

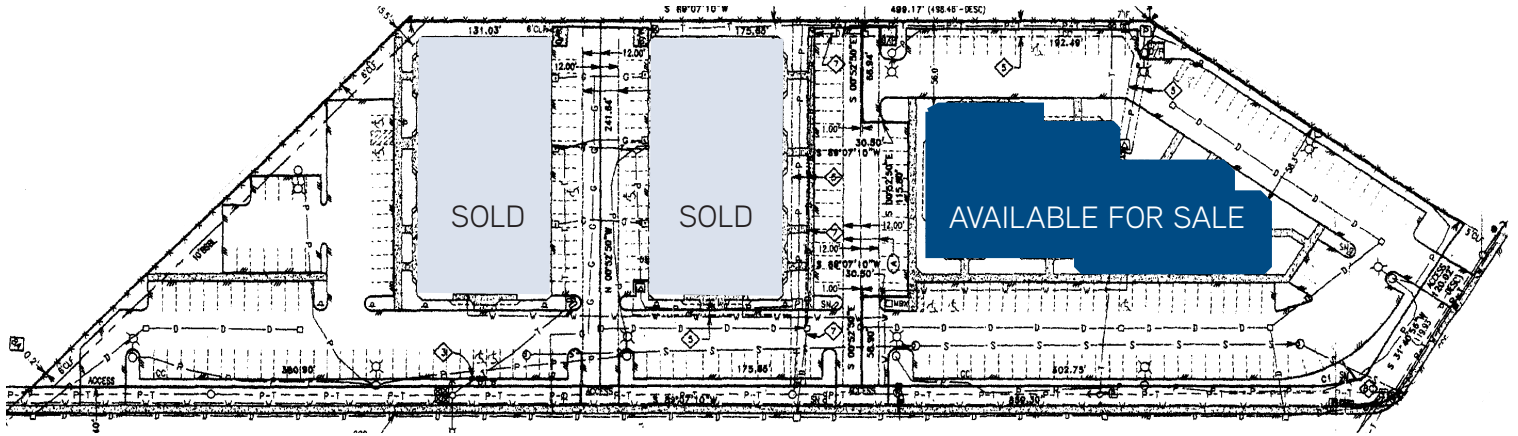
Gregg Riva
Senior Vice President
425 453 3132
gregg.riva@colliers.com



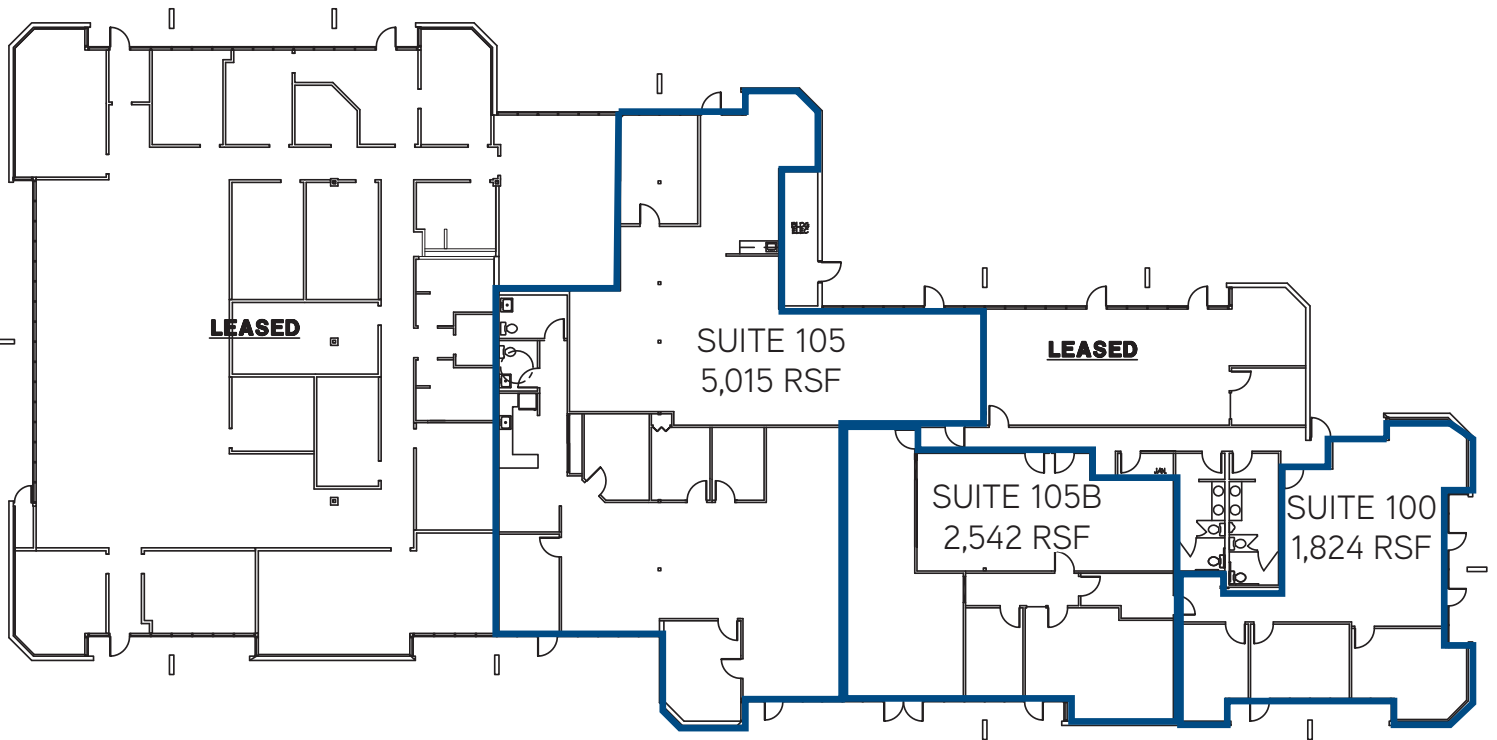
COLLIERS INTERNATIONAL
11225 SE 6th Street, Suite 240
Bellevue, WA 98004
425 453 4545 | www.colliers.com

FOR SALE/LEASE > EXCELLENT OWNER/USER OPPORTUNITY

Everett Business Park > Site Plan



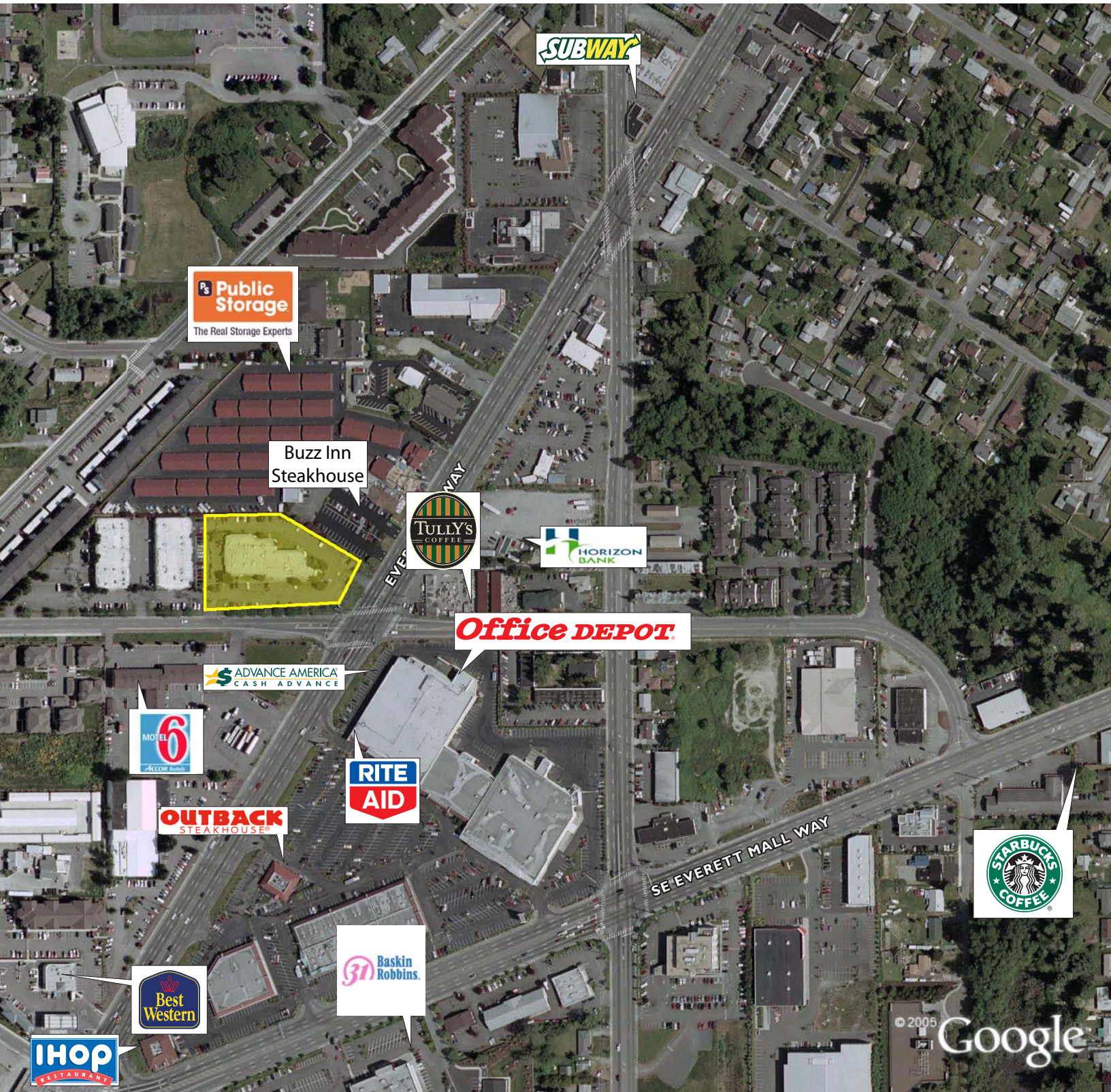
AVAILABLE FOR SALE
18,251 SQUARE FEET TOTAL



3 SUITES AVAILABLE FOR LEASE COMBINED FOR
9,381 SQUARE FEET TOTAL

FOR SALE/LEASE > EXCELLENT OWNER/USER OPPORTUNITY

Everett Business Park > Location



Everett Business Park > Bus Routes

