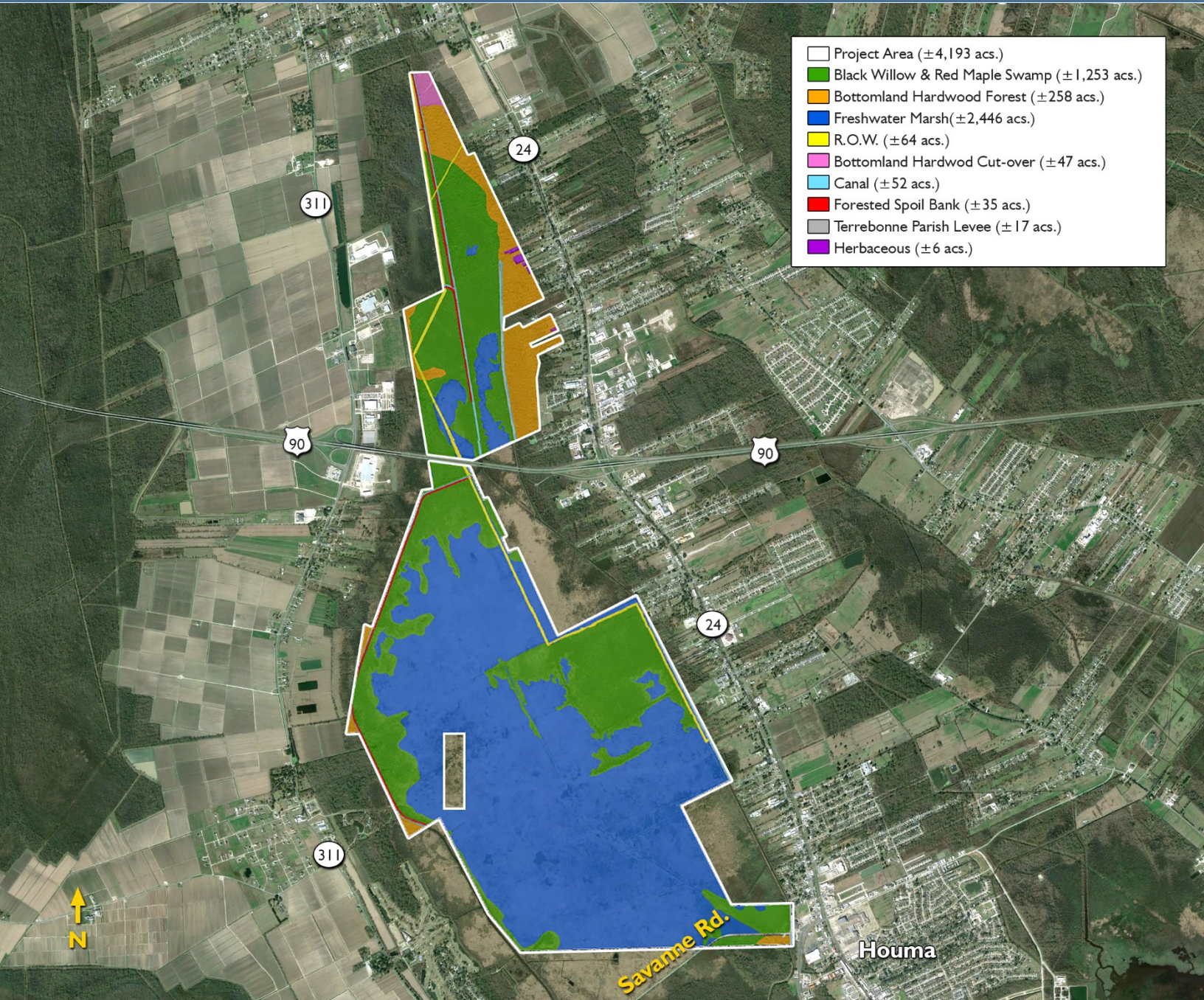


LAND FOR SALE



Randall B. Boughton, CCIM
 (225) 295 0800
rboughton@latterblum.com

Matt Redd, CCIM, SIOR, CRE
 (337) 489 9666
matt.redd@latterblum.com

Jeff G. Peden, SIOR
 (713) 963 2880
jeff.peden@cushwake.com

David L. Cook, SIOR, CRE
 (713) 963 2888
david.cook@cushwake.com

NAI Latter & Blum
 10455 Jefferson Hwy., Suite 200 | Baton Rouge, LA 70601
www.latterblum.com

Cushman & Wakefield of Texas, Inc.
 Licensed Real Estate Brokers
 1330 Post Oak Boulevard | Suite 2700 | Houston, TX 77056
www.cushmanwakefield.com

±4,193 Acres of Land Houma, Terrebonne Parish, LA

NAILatter & Blum

CUSHMAN & WAKEFIELD

NAI/Latter & Blum and Cushman & Wakefield are pleased to offer for sale ±4,193 acres of land located approximately three miles west of Houma, Louisiana in Terrebonne Parish.

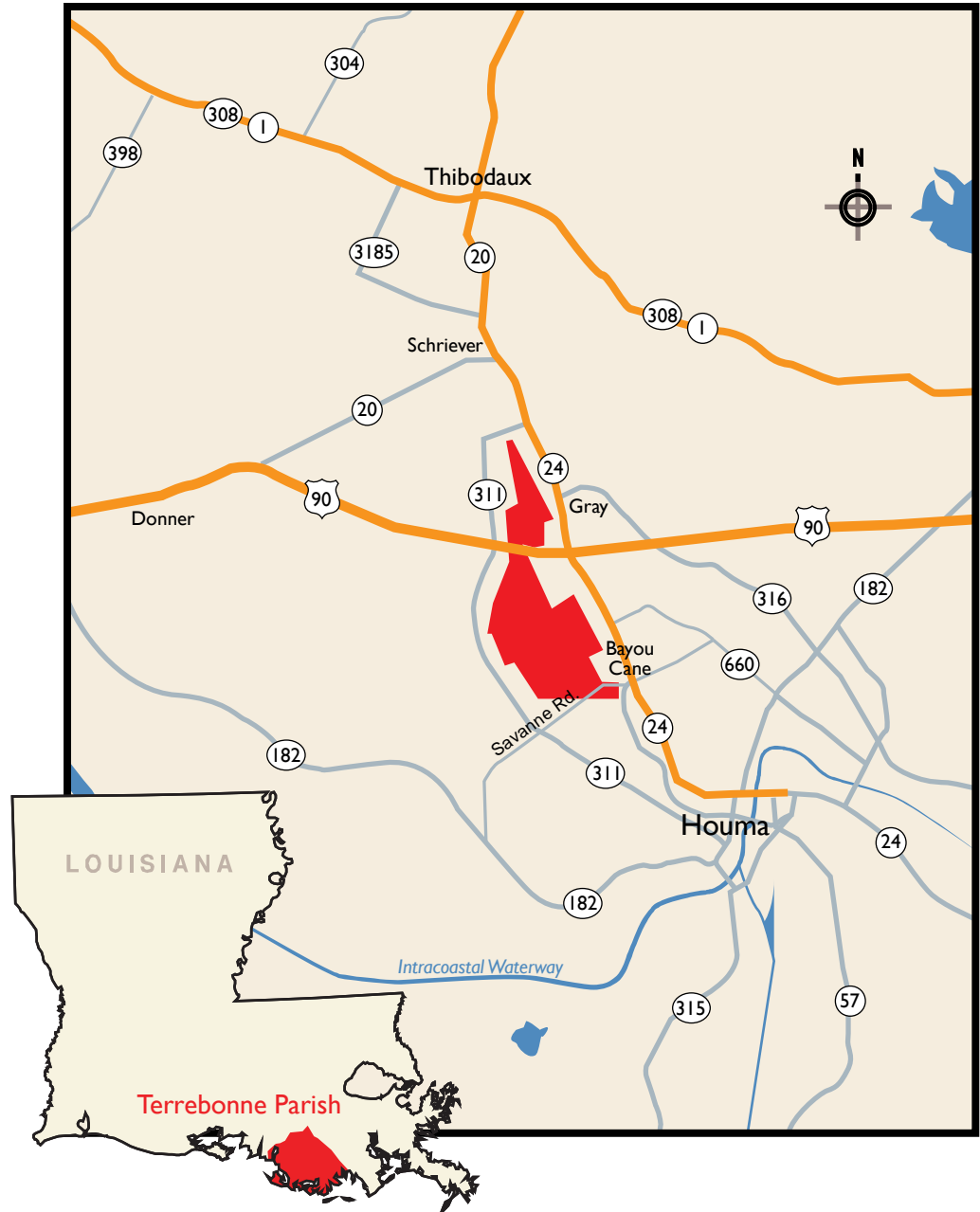
Opportunities for groups needing wetlands acreage, including, but not limited to:

- Government Agencies
- Private Companies
- Wetland Mitigation Bank Developers

This possible Wetlands Mitigation Site can be accessed via US Highway 90, which runs east and west through the property and via Savanne Road on the south end of the site or Highway 24 which runs just west of the property.

Located in southern Louisiana, it is approximately 60 miles southwest of New Orleans

Asking Price: Call broker



Randall B. Boughton, CCIM
(225) 295 0800
rboughton@latterblum.com

Matt Redd, CCIM, SIOR, CRE
(337) 489 9666
matt.redd@latterblum.com

Jeff G. Peden, SIOR
(713) 963 2880
jeff.peden@cushwake.com

David L. Cook, SIOR, CRE
(713) 963 2888
david.cook@cushwake.com

NAI Latter & Blum
1424 Ryan Street | Lake Charles, LA 70601
www.latterblum.com

Cushman & Wakefield of Texas, Inc.
Licensed Real Estate Brokers
1330 Post Oak Boulevard | Suite 2700 | Houston, TX 77056
www.cushmanwakefield.com