



## KEY FEATURES

- On Site Secure Covered Parking
- 4.51:1000 Parking Ratio
- Randolph County Courthouse Across Street
- Chiller and AC System Recently Updated
- Randolph Hospital 2 Blocks North
- Potential Ability to Demise 2 Floors of Offices

OFFICE/RETAIL CORNER LOCATION

FOR SALE

# 15 S FAYETTEVILLE STREET & 120 WORTH STREET

Asheboro, NC 27203

15 South Fayetteville Street and 120 Worth Street are the former Asheboro Headquarters for Wells Fargo. Combined, this Class B Office building totals ±15,598 SF, consisting of ±14,392 SF of office space and ±1,206 SF of retail space in the drive through building. The property was built in 1968 and is zoned B2 and B#.

Property features include ample on-site secure covered parking, great corner location in the heart of downtown Asheboro across the street from the Randolph County Courthouse. The chiller and AC System have recently been updated and the property has the potential ability to demise 2 floors of offices.

## LEARN MORE ABOUT THIS PROPERTY

### JORDAN REECE, CCIM

Jordan@commercialrealtync.com  
336.689.7545

### JEFF ANDREWS

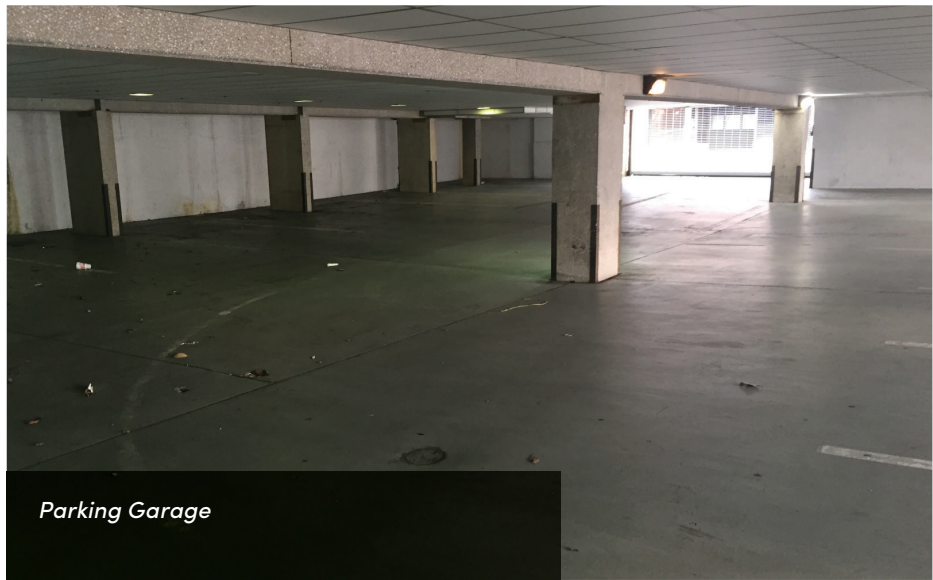
Jeff@commercialrealtync.com  
336.793.0890 x103



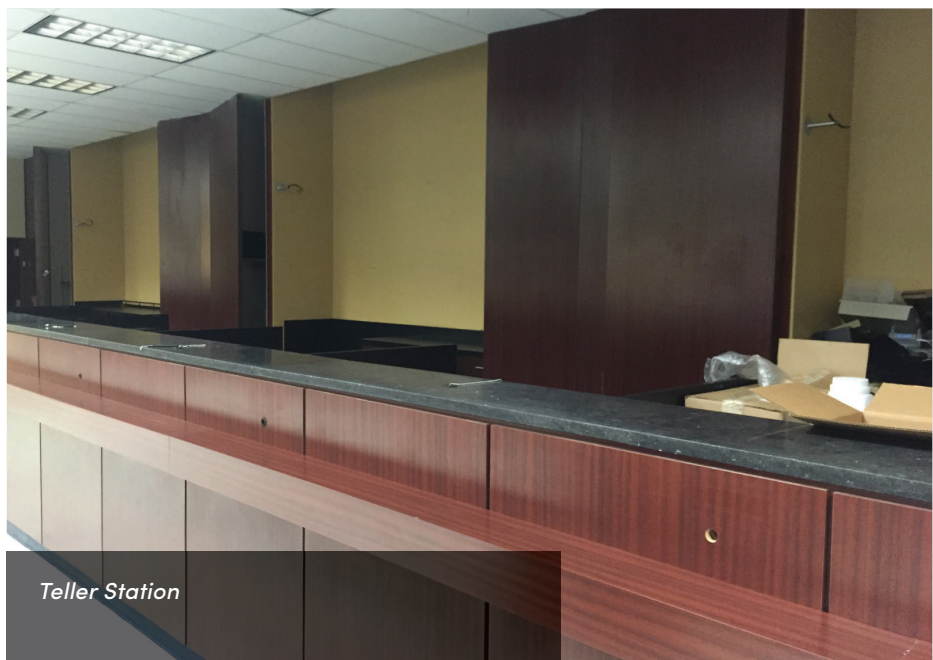
Parking Garage Access



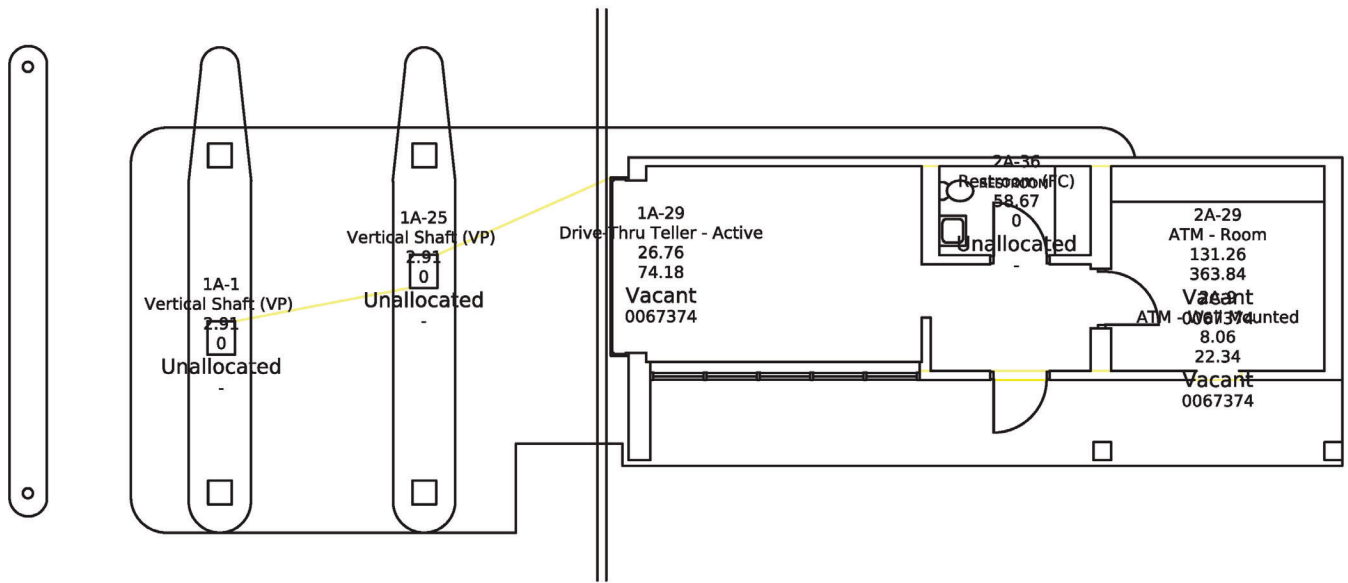
Vault



Parking Garage



Teller Station



Retail Floor Plan

## OFFICE/RETAIL CORNER LOCATION

### LOCATION

<b>Address</b>	15 S. Fayetteville st. & 120 Worth St.	<b>City Zip</b>	Asheboro 27203	<b>County</b>	Randolph
<b>Zoning</b>	B2 and B#	<b>Tax Value:</b>	\$1,937,560	<b>Year Built</b>	1968

### PROPERTY DETAILS

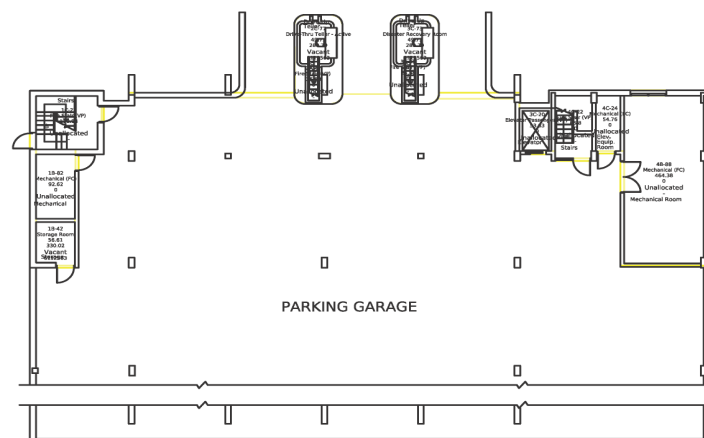
<b>Property Type</b>	Office / Retail	<b>Available SF±</b>	15,598	<b>Acres ±</b>	0.81
<b>Office SF±</b>	14,392	<b>Retail SF±</b>	1,206	<b>Restrooms</b>	4
<b>Floors</b>	2	<b>Flooring</b>	Concrete/Stone	<b>Building Exterior</b>	Concrete

### UTILITIES

<b>Electrical</b>	Duke Energy	<b>Sewer</b>	City of Asheboro	<b>Heat</b>	Yes
<b>Water</b>	City of Asheboro	<b>Air</b>	Yes	<b>Gas</b>	PNG

### PRICING AND TERMS

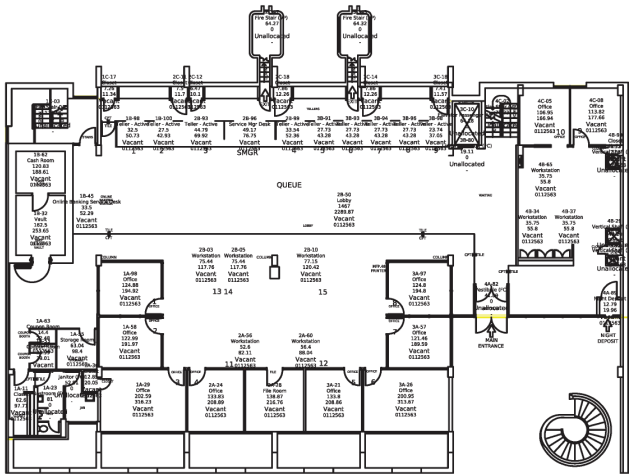
<b>Price</b>	\$1,325,000	<b>Price PSF</b>	\$84.94
--------------	-------------	------------------	---------



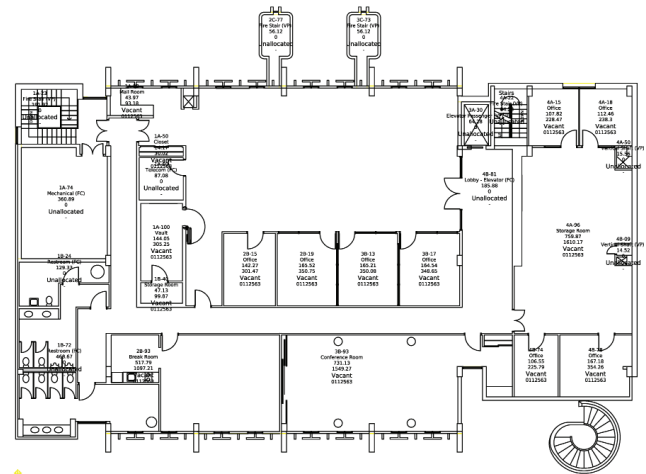
Parking Garage Plan

OFFICE/RETAIL CORNER LOCATION

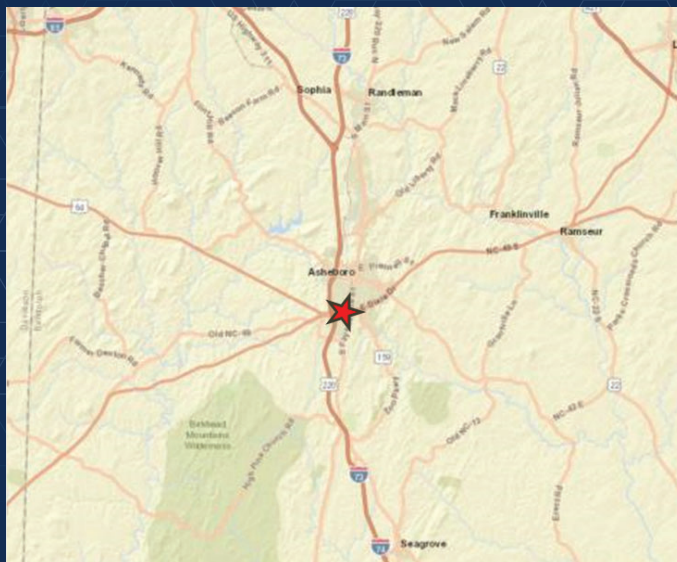
FOR SALE



First Floor Plan



Second Floor Plan



LOCATION FEATURES

- Great Corner Location in the Heart of Downtown Asheboro
- Randolph County Courthouse Across Street
- Randolph Hospital 2 Blocks North