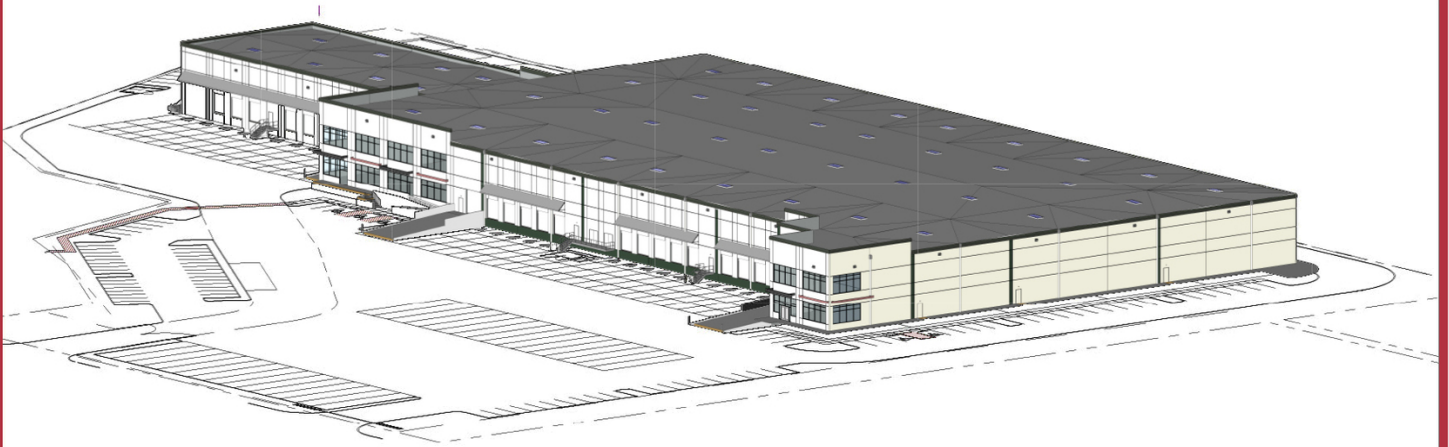


For Lease

Industrial

62,640 SF with 1/2 acre yard



3230 85th Street South

Lakewood, WA 98499

- 62,640 SF with 1/2 acre yard
- Great I-5 access; three I-5 interchanges within 2 miles
- Concrete - tilt wall
- 32' clear height
- ESFR sprinklers
- 12 DH, 1 Drive-In
- BTS office
- Up to 18 trailer stalls
- Truck scale on-site
- Warehouse dimensions: 235' x 254'
- Air Corridor 2 zoning, City of Lakewood
- Call for rates

For more information:

Dave Douglas, SIOR, CCIM

+1 253 203 1326 • ddouglas@nai-psp.com

Kyle Schipper

+1 253 203 1320 • kschipper@nai-psp.com



BELLEVUE | SEATTLE | TACOMA

1201 Pacific Avenue, Suite 1703

Tacoma, WA 98402

+1 253 383 3100

nai-psp.com

THE INFORMATION CONTAINED HEREIN HAS BEEN GIVEN TO US BY THE OWNER OF THE PROPERTY OR OTHER SOURCES WE DEEM RELIABLE, WE HAVE NO REASON TO DOUBT ITS ACCURACY, BUT WE DO NOT GUARANTEE IT. ALL INFORMATION SHOULD BE VERIFIED PRIOR TO PURCHASE OR LEASE.

