

# SPACE 15 TWENTY



For more information, please contact:

MATTHEW FAINCHEIN  
310 595 2234

matthew.fainchtein@cushwake.com  
Lic. 01503546

CARTER MAGNIN  
310 595 2203

carter.magnin@cushwake.com  
Lic. 01909728

CUSHMAN & WAKEFIELD, INC.  
10250 Constellation Blvd., Suite 2200  
Los Angeles, CA 90067  
[www.cushmanwakefield.com](http://www.cushmanwakefield.com)

The depiction in the included photograph of any person, entity, sign, logo or property, other than Cushman & Wakefield's (C&W) client and the property offered by C&W, is incidental only, and is not intended to connote any affiliation, connection, association, sponsorship or approval by or between that which is incidentally depicted and C&W or its client. This listing shall not be deemed an offer to lease, sublease or sell such property; and, in the event of any transaction for such property, no commission shall be earned by or payable to any cooperating broker except if otherwise provided pursuant to the express terms, rates and conditions of C&W's agreement with its principal, if, as and when such commission (if any) is actually received from such principal. (A copy of the rates and conditions referred to above with respect to this property is available upon request.)

# 1520 N CAHUENGA BOULEVARD

# SPACE 15 TWENTY

---

Location/Submarket:	Hollywood
Size – Space A:	2,340 square feet
Space B:	1,905 square feet
Space C:	1,695 square feet
Rental Rate:	\$72.00 PSF per annum, net
NNN:	\$6.00 PSF per annum
Possession:	Immediate
Term:	Negotiable
Rental Rate:	\$72.00 PSF per annum, net

---



Space A



Space B | Space C



- Prime Hollywood location within Space 15 Twenty project. Co-Tenants include: Urban Outfitters, Umami Burger, Free People, Hennessey + Ingalls Book Store and Hirroin Salon
- There are two (2) adjacent surface parking lots with # of spaces?
- There are already fully built-out restrooms in each space
- Neighboring Tenants include: Arc Light Cinemas, 24 Hour Fitness, Stella Barra, Veggie Grill, St. Felix, Shop House, Aventine, Kitchen 24, The Dream Hotel (Coming Soon), and CNN

For more information, please contact:

MATTHEW FAINCHEIN  
310 595 2234

matthew.fainchtein@cushwake.com  
Lic. 01503546

CARTER MAGNIN  
310 595 2203

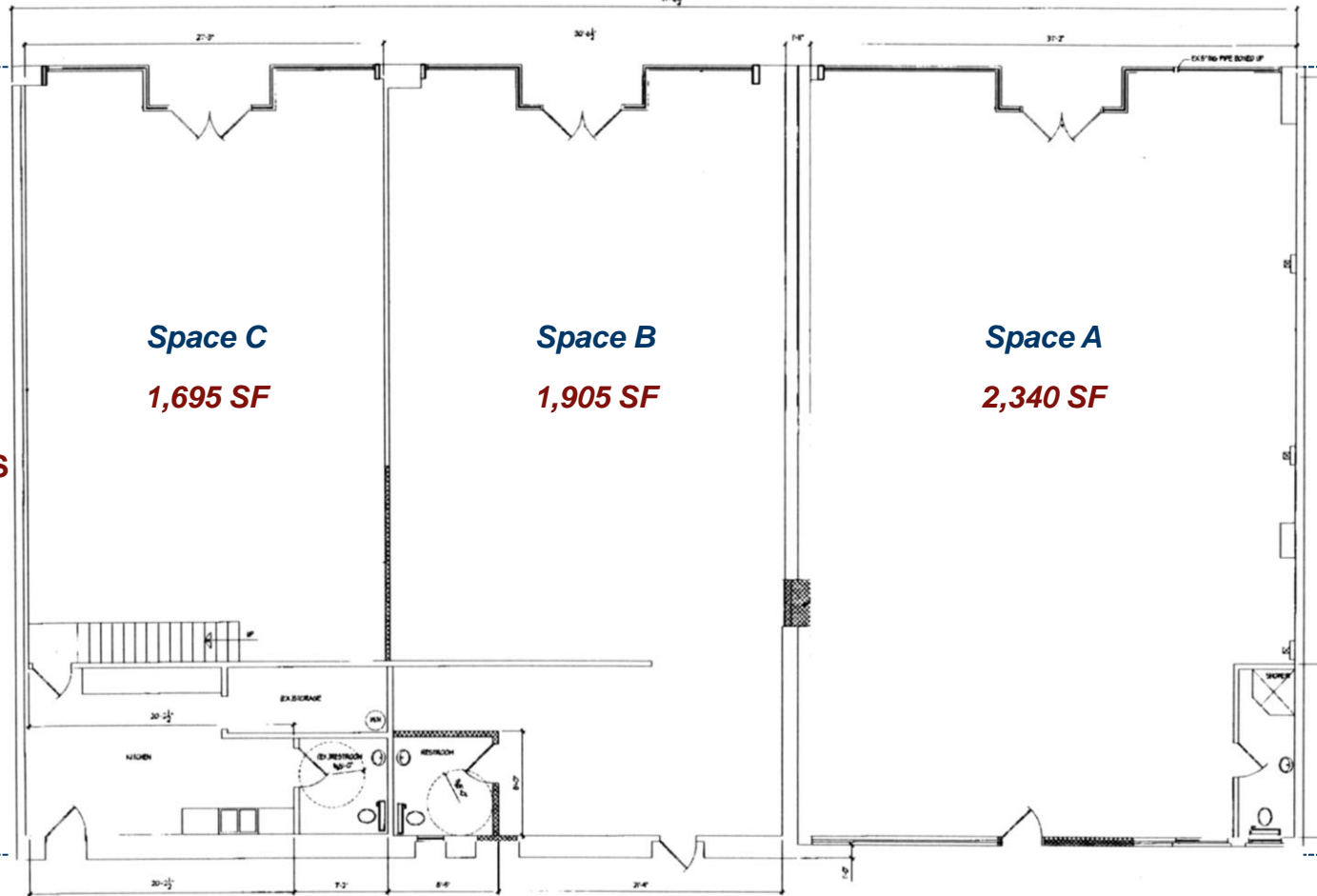
carter.magnin@cushwake.com  
Lic. 01909728

CUSHMAN & WAKEFIELD, INC.  
10250 Constellation Blvd., Suite 2200  
Los Angeles, CA 90067  
www.cushmanwakefield.com

1520 N CAHUENGA BOULEVARD

# SPACE 15 TWENTY

Cahuenga Blvd



UMAMI BURGER

**Space C**

**1,695 SF**

**Space B**

**1,905 SF**

**Space A**

**2,340 SF**

STOUT BURGER

URBAN OUTFITTERS

FREE PEOPLE

For more information, please contact:

MATTHEW FAINCHEIN

310 595 2234

matthew.fainchtein@cushwake.com

Lic. 01503546

CARTER MAGNIN

310 595 2203

carter.magnin@cushwake.com

Lic. 01909728

CUSHMAN & WAKEFIELD, INC.

10250 Constellation Blvd., Suite 2200

Los Angeles, CA 90067

www.cushmanwakefield.com

1520 N CAHUENGA BOULEVARD

# SPACE 15 TWENTY



For more information, please contact:

MATTHEW FAINCHEIN

310 595 2234

matthew.fainchtein@cushwake.com

Lic. 011503546

CARTER MAGNIN

310 595 2203

carter.magnin@cushwake.com

Lic. 01909728

CUSHMAN & WAKEFIELD, INC.

10250 Constellation Blvd., Suite 2200

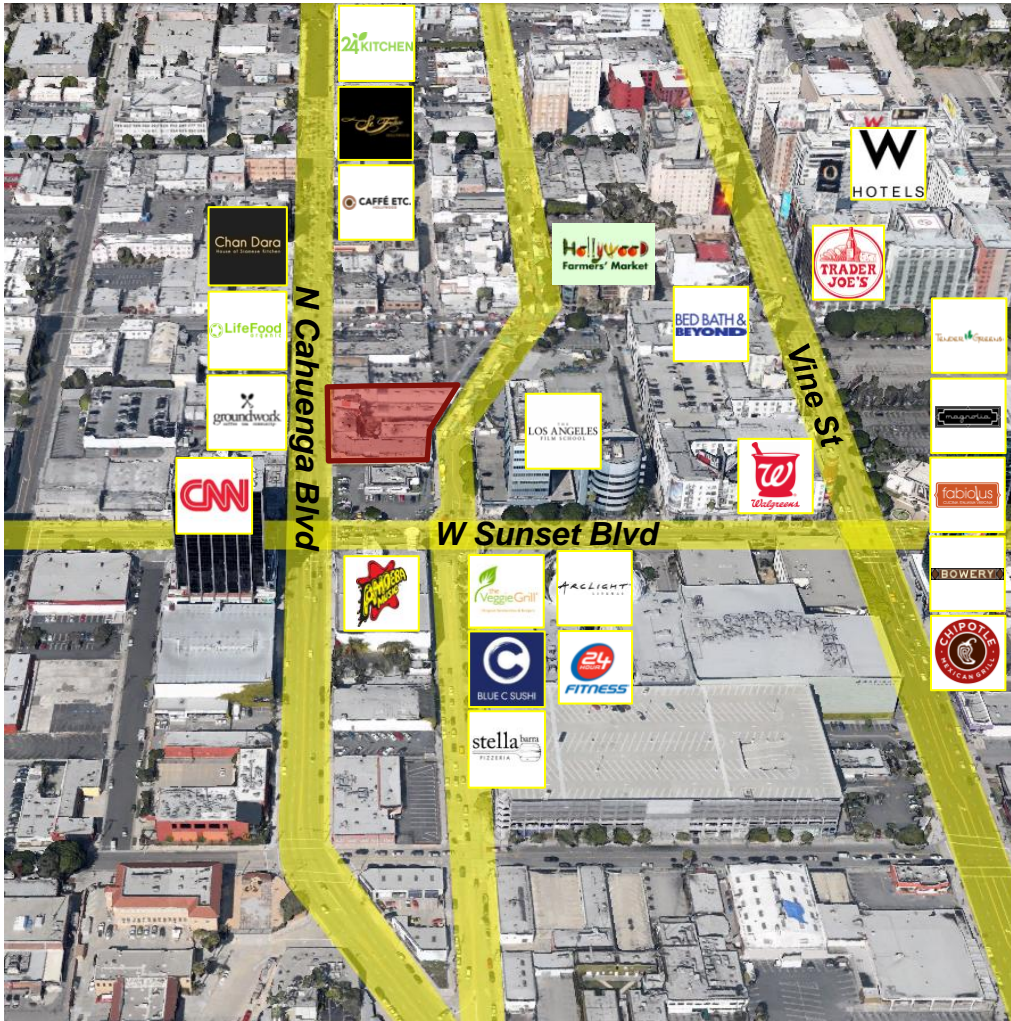
Los Angeles, CA 90067

[www.cushmanwakefield.com](http://www.cushmanwakefield.com)

The depiction in the included photograph of any person, entity, sign, logo or property, other than Cushman & Wakefield's (C&W) client and the property offered by C&W, is incidental only, and is not intended to connote any affiliation, connection, association, sponsorship or approval by or between that which is incidentally depicted and C&W or its client. This listing shall not be deemed an offer to lease, sublease or sell such property; and, in the event of any transaction for such property, no commission shall be earned by or payable to any cooperating broker except if otherwise provided pursuant to the express terms, rates and conditions of C&W's agreement with its principal, if, as and when such commission (if any) is actually received from such principal. (A copy of the rates and conditions referred to above with respect to this property is available upon request.)

# 1520 N CAHUENGA BOULEVARD

# SPACE 15 TWENTY



For more information, please contact:

**MATTHEW FAINCHEIN**

310 595 2234

matthew.fainchtein@cushwake.com

Lic. 01503546

**CARTER MAGNIN**

310 595 2203

carter.magnin@cushwake.com

Lic. 01909728

**CUSHMAN & WAKEFIELD, INC.**

10250 Constellation Blvd., Suite 2200

Los Angeles, CA 90067

[www.cushmanwakefield.com](http://www.cushmanwakefield.com)

The depiction in the included photograph of any person, entity, sign, logo or property, other than Cushman & Wakefield's (C&W) client and the property offered by C&W, is incidental only, and is not intended to connote any affiliation, connection, association, sponsorship or approval by or between that which is incidentally depicted and C&W or its client. This listing shall not be deemed an offer to lease, sublease or sell such property; and, in the event of any transaction for such property, no commission shall be earned by or payable to any cooperating broker except if otherwise provided pursuant to the express terms, rates and conditions of C&W's agreement with its principal, if, as and when such commission (if any) is actually received from such principal. (A copy of the rates and conditions referred to above with respect to this property is available upon request.)