



### PROPERTY INFORMATION

Parcel Size: 5.84 Acres

Sale Price: ~~\$595,000.00~~ **NOW** \$495,000.00

Tax Schedule No: 6228005033

- Gently sloping East to West
- Beautiful mountain views
- School District 20
- Topography conducive to walkout/garage
- May be divisible
- Well on property-permit No. 172665
- Located in El Paso County
- Kettle Creek crosses in the center of site
- No architectural control committee
- No HOA
- "Close in" and secluded location

### Demographics

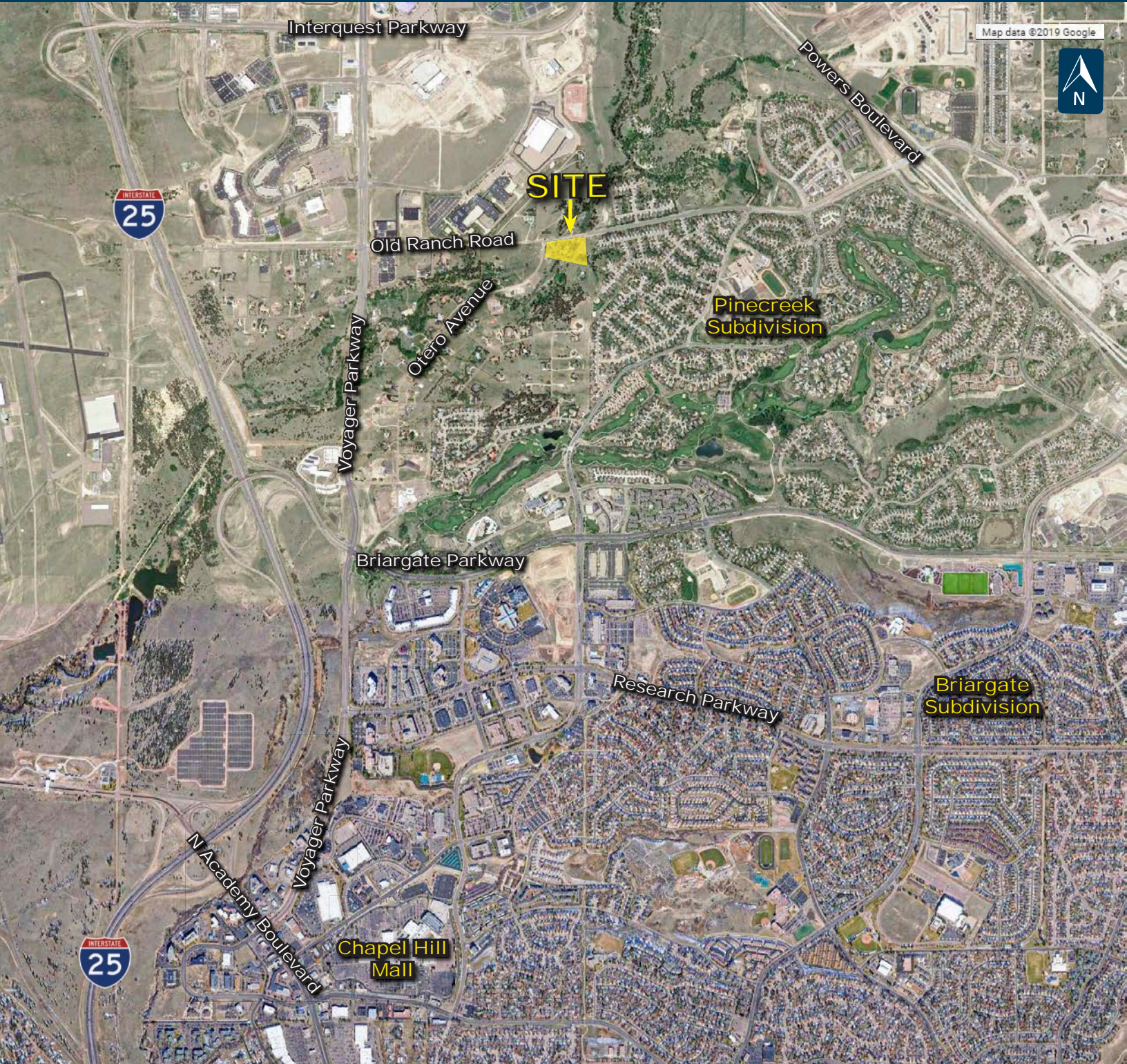
	1 Mile	3 Mile	5 Mile
<b>Population</b>			
2018 Est. Population	5,209	42,098	127,045
<b>Households</b>			
2018 Est. HHs	1,860	15,099	46,759
2018 Est. Avg. HH Income	\$157,663	\$127,439	\$116,139
	5 Min	10 Min	15 Min
<b>Drive Times</b>			
2018 Est. Population	5,282	59,220	218,311
2018 Est. HHs	1,740	20,847	82,936
2018 Est. Avg HH Income	\$164,387	\$129,352	\$105,257

Source: 2018 US Estimate, All Rights Reserved, Alteryx, Inc.

**Steve Hunsinger**  
steveh@olivereg.com

# FOR SALE LUXURY COUNTRY HOME SITES

10245 OTERO AVENUE, COLORADO SPRINGS, CO 80920



102 N CASCADE AVE, SUITE 250, COLORADO SPRINGS, CO 80903 • t. 719.598.3000 f. 719.578.0089 www.oliverreg.com

Olive Real Estate Group, Inc. Copyright 2019. Reproductions are legally prohibited without written consent.  
Information contained herein, while not guaranteed, is from sources we believe to be reliable. Prices, terms and information subject to change.