



## 300 S.E. 29th Street

Oklahoma City, Oklahoma 73129

### PROPERTY HIGHLIGHTS

- 3.58 Acres I-3 Land
- Just East of Shields Boulevard
- Close to I-35
- Over 1200' Deep
- Frontage on S.E 29th Street
- Bargain Priced Less than \$2.00/SF



LAND IN ACRES      3.58 MOL

ZONING                      I-3

GENERAL USE              Industrial

[www.naisullivangroup.com](http://www.naisullivangroup.com)

**Darryl Meason**

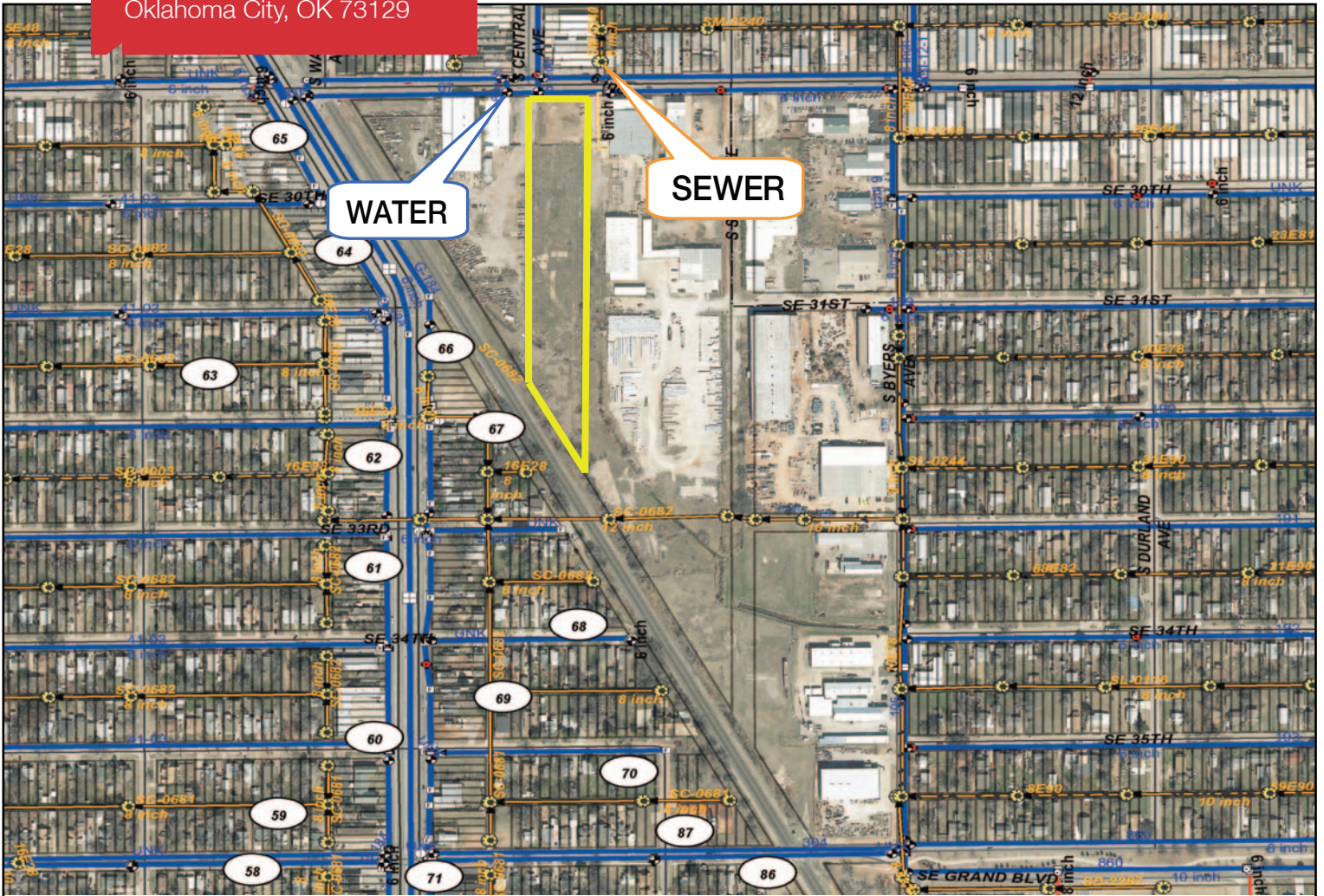
Cell: 1 405 205 9440

darryl@naisullivangroup.com

NO WARRANTY OR REPRESENTATION, EXPRESS OR IMPLIED, IS MADE AS TO THE ACCURACY OF THE INFORMATION CONTAINED HEREIN, AND THE SAME IS SUBMITTED SUBJECT TO ERRORS, OMISSIONS, CHANGE OF PRICE, RENTAL OR OTHER CONDITIONS, PRIOR SALE, LEASE OR FINANCING, OR WITHDRAWAL WITHOUT NOTICE, AND OF ANY SPECIAL LISTING CONDITIONS IMPOSED BY OUR PRINCIPALS NO WARRANTIES OR REPRESENTATIONS ARE MADE AS TO THE CONDITION OF THE PROPERTY OR ANY HAZARDS CONTAINED THEREIN ARE ANY TO BE IMPLIED.

4045 N.W. 64th Street, Suite 340  
Oklahoma City, Oklahoma 73116  
Office: 1 405 840 0600  
Fax: 1 405 840 0610

300 S.E. 29th Street  
Oklahoma City, OK 73129



## DEMOGRAPHICS

### Population

1 Mile: 11,787	3 Mile: 81,713	5 Mile: 228,872
-------------------	-------------------	--------------------

### Average Household Income

1 Mile: \$28,789	3 Mile: \$32,883	5 Mile: \$36,909
---------------------	---------------------	---------------------

### Total Households

1 Mile: 3,860	3 Mile: 28,203	5 Mile: 86,130
------------------	-------------------	-------------------

**Darryl Meason**

Cell: 1 405 205 9440

darryl@naisullivangroup.com

[www.naisullivangroup.com](http://www.naisullivangroup.com)

4045 N.W. 64th Street, Suite 340  
Oklahoma City, Oklahoma 73116  
Office: 1 405 840 0600  
Fax: 1 405 840 0610

**NAISullivan Group**