

INDUSTRIAL UNITS FROM 2,530± SF TO 5,060± SF FOR LEASE

1555 REPORT AVENUE, STOCKTON, CA

ADDRESS: 1555 Report Avenue, Stockton, CA
BUILDING SIZE: 12,650± SF (divisible to 2,530± SF)
TOTAL LAND SIZE: 0.79± AC
ZONING : IL (Limited Industrial,
City of Stockton)

FEATURES:

- Two (2) 2,530± SF units available
- Each unit separately metered and w/individual restroom
- Fenced, secured premises
- Easy access to/from Hwy 99 via Waterloo Road
- Units 1525 and 1537 can be combined for 5,060± SF
- Privatized yard possible

Unit 1525:

- 100% office
- Three (3) private offices
- Reception area
- One (1) restroom

Unit 1537

- 814± SF office
- Two (2) private offices
- Reception area
- One (1) restroom
- One (1) GL door



LEASE RATE: \$0.60 psf Gross
\$1,500 per mo. per unit, Gross

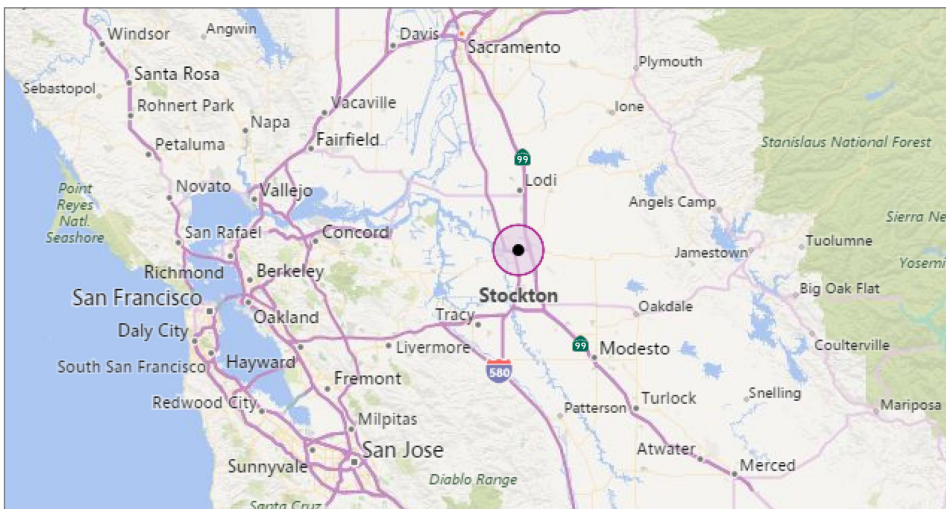
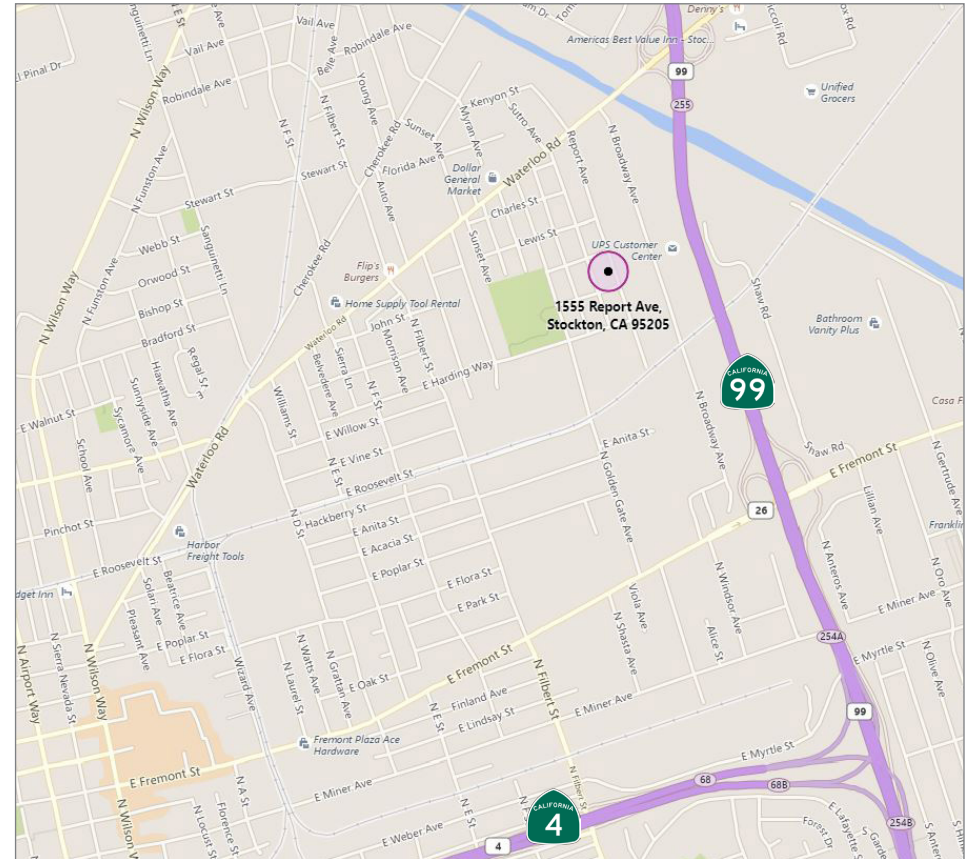
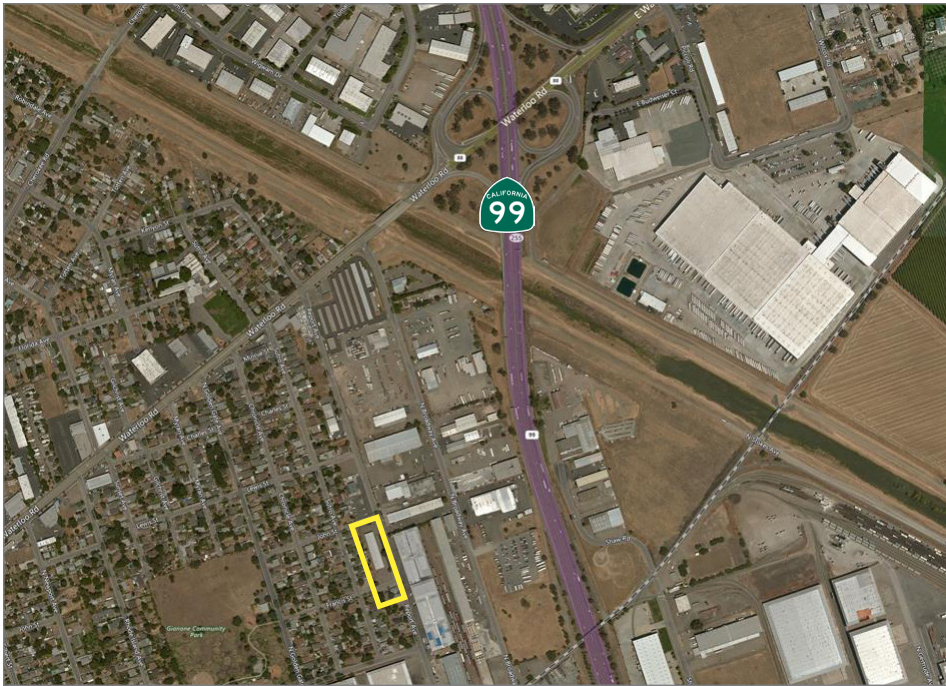
Jim Martin, SIOR
BRE #01214270
jmartin@lee-associates.com
D 209.983.4088
C 925.352.6948

Guy Grace
BRE #02045756
ggrace@lee-associates.com
D 209.982.4444
C 925.360.8610

All information furnished regarding property for sale, rental or financing is from sources deemed reliable, but no warranty or representation is made to the accuracy thereof and same is submitted to errors, omissions, change of price, rental or other conditions prior to sale, lease or financing or withdrawal without notice. No liability of any kind is to be imposed on the broker herein.

INDUSTRIAL UNITS FROM 2,530± SF TO 5,060± SF FOR LEASE

1555 REPORT AVENUE, STOCKTON, CA



Jim Martin, SIOR
BRE #01214270
jmartin@lee-associates.com
D 209.983.4088
C 925.352.6948

Guy Grace
BRE #02045756
ggrace@lee-associates.com
D 209.982.4444
C 925.360.8610

All information furnished regarding property for sale, rental or financing is from sources deemed reliable, but no warranty or representation is made to the accuracy thereof and same is submitted to errors, omissions, change of price, rental or other conditions prior to sale, lease or financing or withdrawal without notice. No liability of any kind is to be imposed on the broker herein.