

# MARITIME PLAZA

1201 M STREET, SE + 1220 12<sup>TH</sup> STREET, SE



# HIGHLIGHTS

- ✓ \$45-\$46 FS, 3-10 Year Terms
- ✓ Across from Washington Navy Yard, St. Elizabeth & DHS
- ✓ Shuttle Provided to Navy Yard, Metro & VA Railway Express ● ● ● ●
- ✓ Amenities Include a Deli, Fitness Center & Conference Facility All On-Site
- ✓ Campus Style Office Project with an Urban Feel
- ✓ Exceptional Finished Ceiling Heights from 9'.6" to 11'.6"
- ✓ 1.5/1,000 SF Parking Ratio
- ✓ Column Free Space

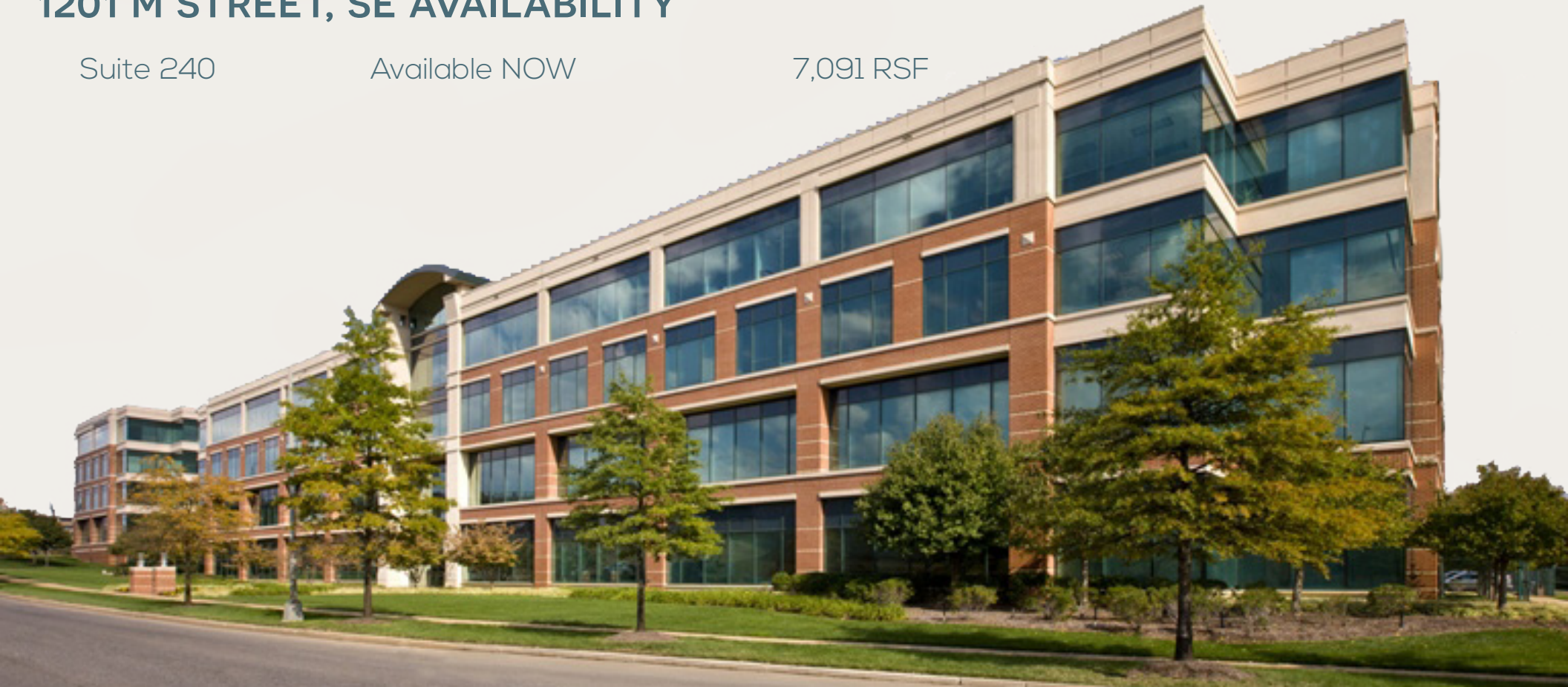


## 1220 12TH STREET, SE AVAILABILITY

Suite 010	Available May 2020	2,998 RSF
Suite 100	AT LEASE	1,164 RSF
Suite 120	Available NOW	1,840 RSF
Suite 130	Available NOW	8,368 RSF
Suite 260	Available NOW	3,837 RSF

## 1201 M STREET, SE AVAILABILITY

Suite 240	Available NOW	7,091 RSF
-----------	---------------	-----------



1220 12th Street SE  
Washington, DC 20003



Ground Floor

Suite 010

2,998 RSF

Available May 2020

LEASING BY:

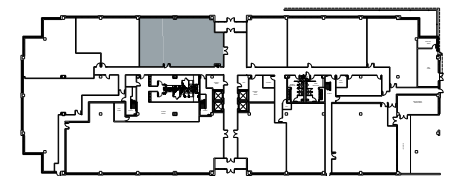
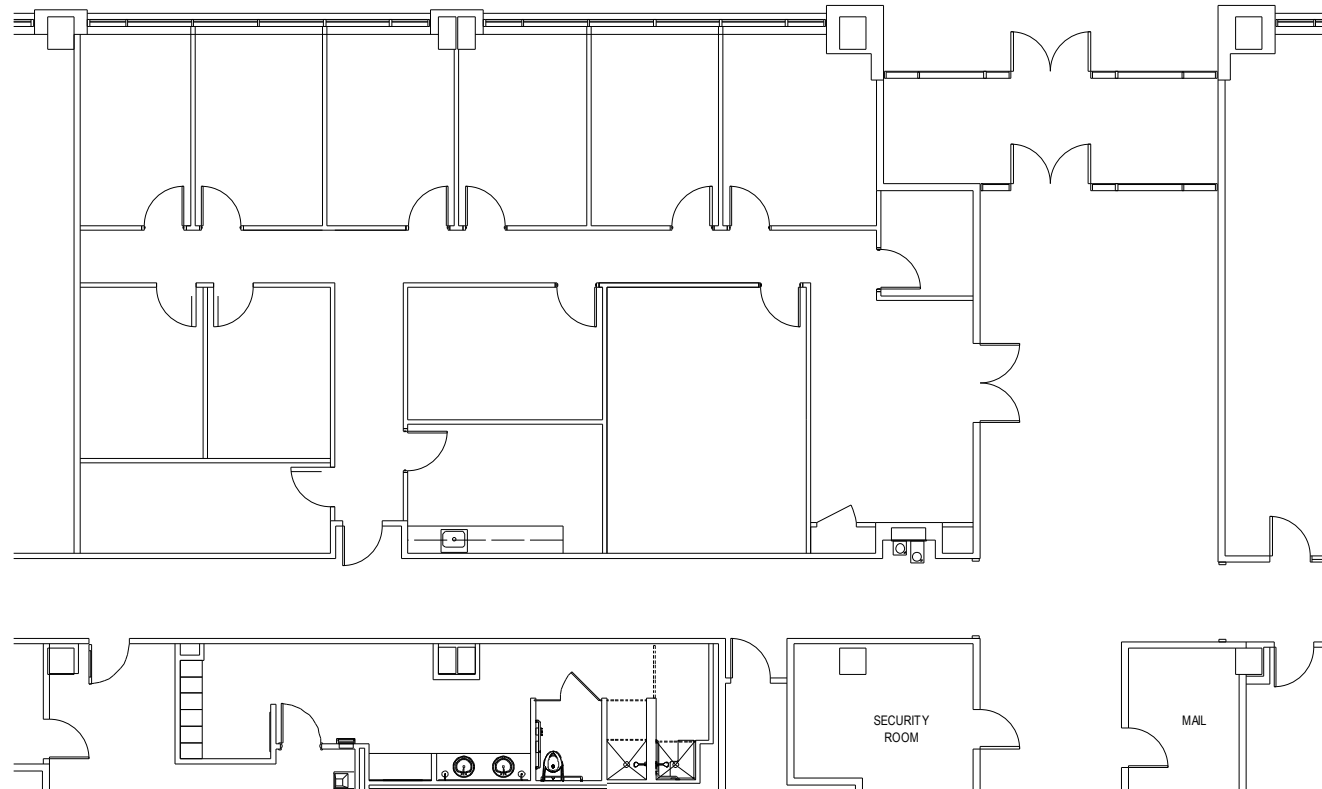
**AVISON  
YOUNG**

OWNED & MANAGED BY:

**COPT**

**CORPORATE OFFICE  
PROPERTIES TRUST**

CORPORATE OFFICE  
PROPERTIES TRUST  
6711 COLUMBIA GATEWAY DRIVE  
COLUMBIA, MD 21046  
443-285-5400 . WWW.COPT.COM

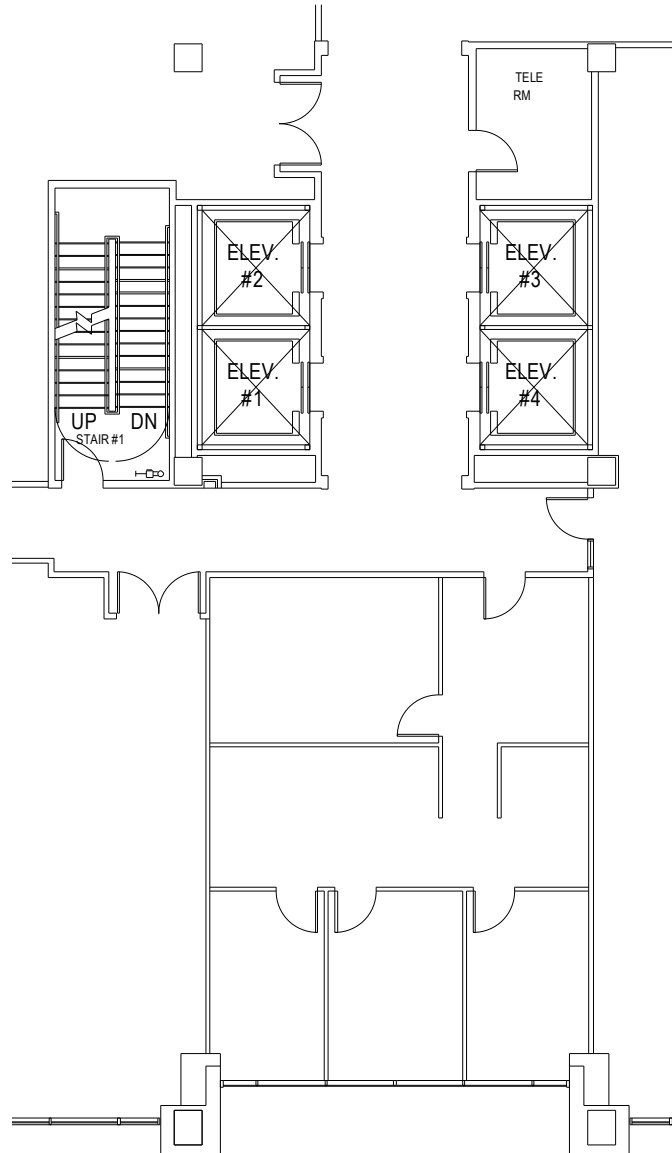


**KEY PLAN**

1220 12th Street SE  
Washington, DC 20003



First Floor  
Suite 100  
1,164 RSF



LEASING BY:

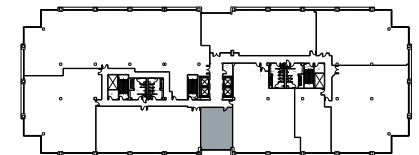
**AVISON  
YOUNG**

OWNED & MANAGED BY:



**CORPORATE OFFICE  
PROPERTIES TRUST**

CORPORATE OFFICE  
PROPERTIES TRUST  
6711 COLUMBIA GATEWAY DRIVE  
COLUMBIA, MD 21046  
443-285-5400 . WWW.COPT.COM



**KEY PLAN**

1220 12th Street SE  
Washington, DC 20003



First Floor  
Suite 120  
1,840 RSF  
Available Now

LEASING BY:

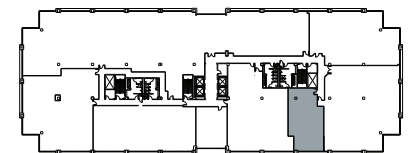
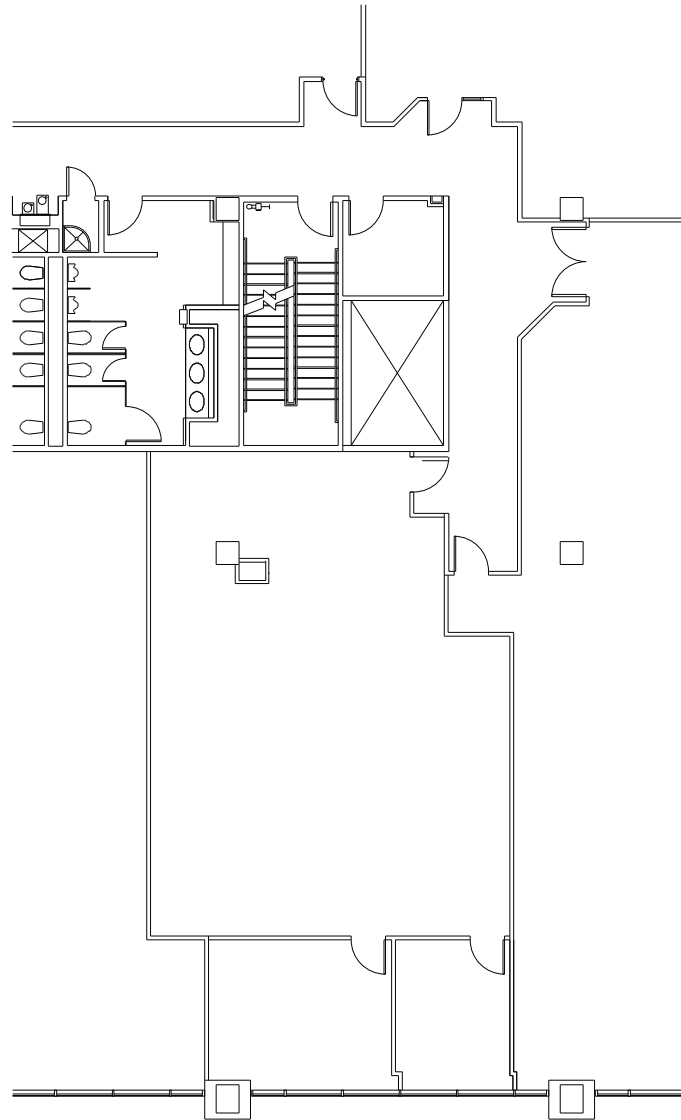
**AVISON  
YOUNG**

OWNED & MANAGED BY:



**CORPORATE OFFICE  
PROPERTIES TRUST**

CORPORATE OFFICE  
PROPERTIES TRUST  
6711 COLUMBIA GATEWAY DRIVE  
COLUMBIA, MD 21046  
443-285-5400 . WWW.COPT.COM



**KEY PLAN**

1220 12th Street SE  
Washington, DC 20003



First Floor

Suite 130  
8,368 RSF

LEASING BY:

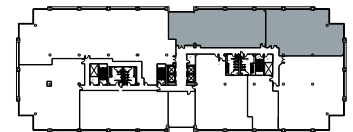
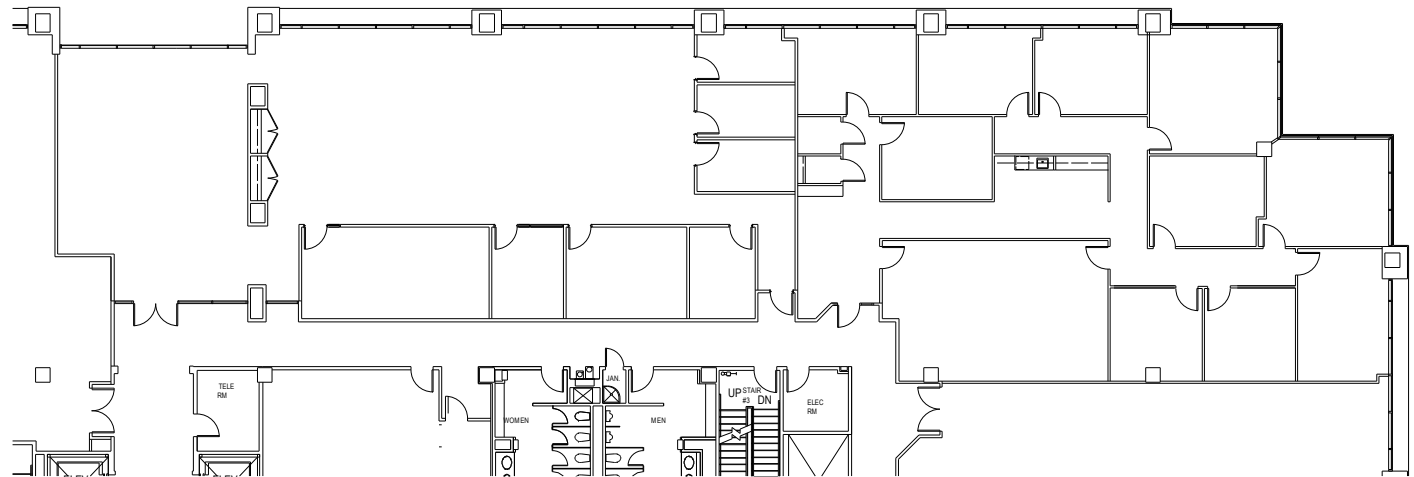
**AVISON  
YOUNG**

OWNED & MANAGED BY:



**CORPORATE OFFICE  
PROPERTIES TRUST**

CORPORATE OFFICE  
PROPERTIES TRUST  
6711 COLUMBIA GATEWAY DRIVE  
COLUMBIA, MD 21046  
443-285-5400 . WWW.COPT.COM



**KEY PLAN**

1220 12th Street SE  
Washington, DC 20003



Second Floor

Suite 260

3,837 RSF

Available Immediately

LEASING BY:

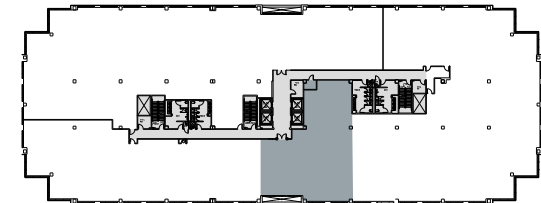
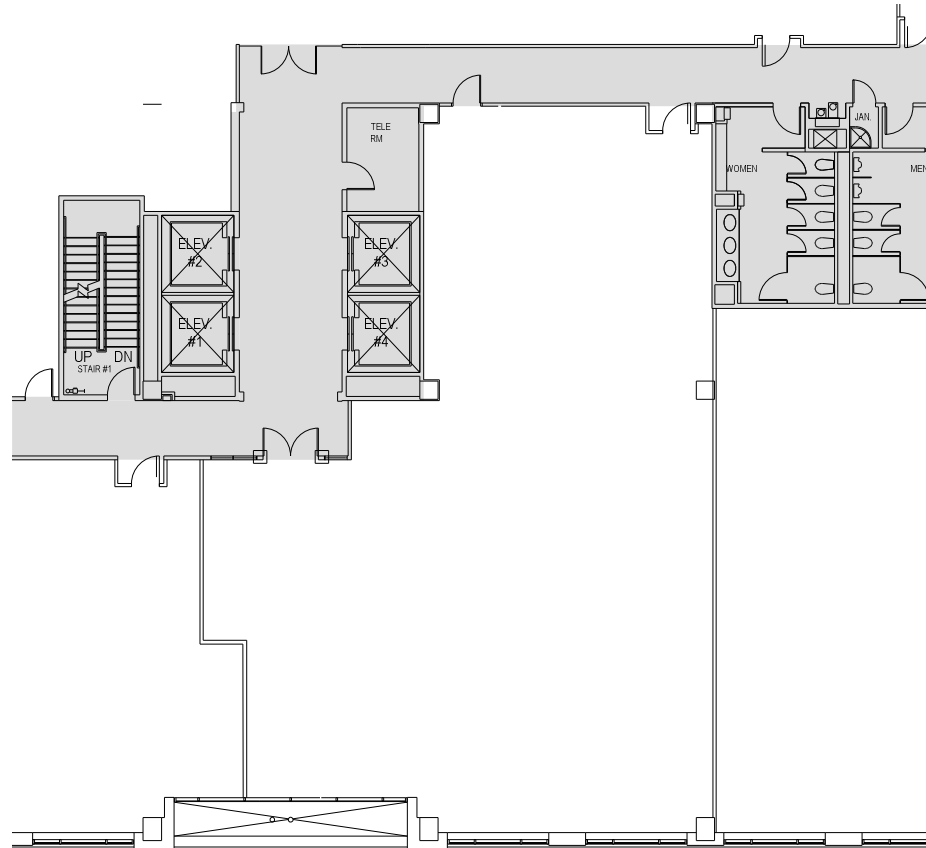
**AVISON  
YOUNG**

OWNED & MANAGED BY:



**CORPORATE OFFICE  
PROPERTIES TRUST**

CORPORATE OFFICE  
PROPERTIES TRUST  
6711 COLUMBIA GATEWAY DRIVE  
COLUMBIA, MD 21046  
443-285-5400 . WWW.COPT.COM



**KEY PLAN**

FLOOR PLAN NOT TO SCALE. SHADED AREAS  
REPRESENT EXTENT OF SUITE.

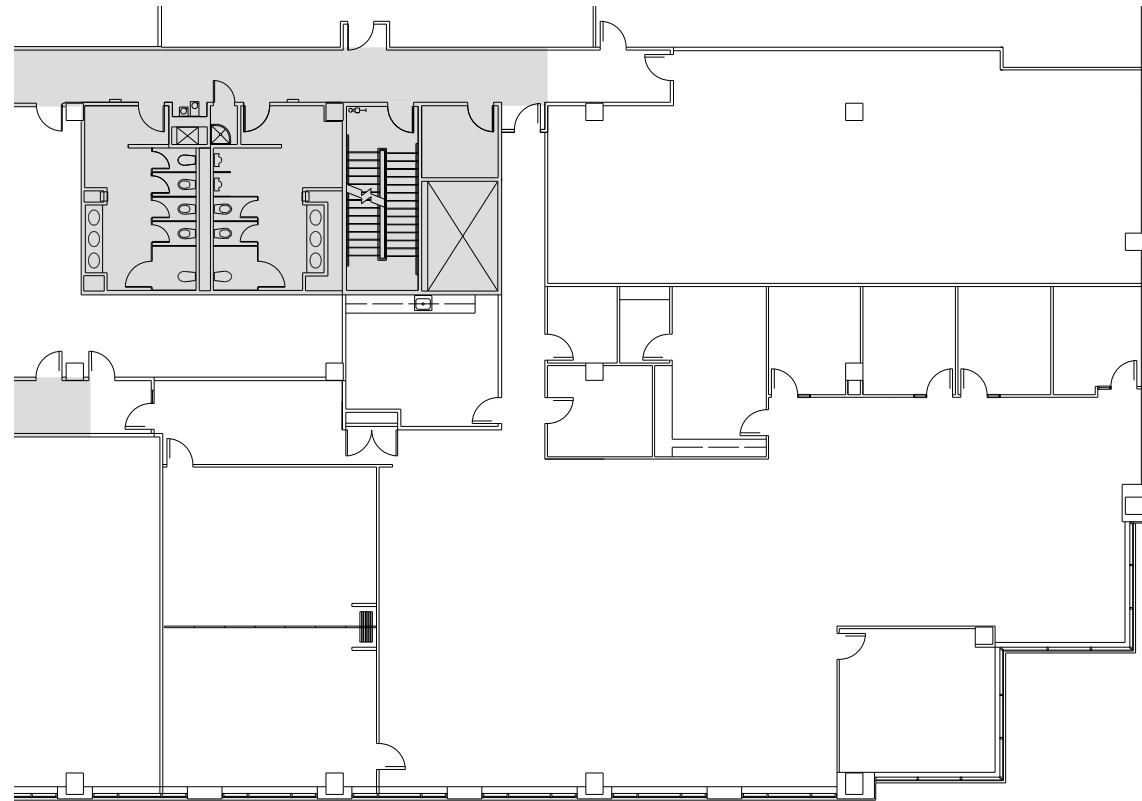


1201 M Street SE  
Washington, DC 20003



Second Floor

Suite 240  
7,091 RSF



LEASING BY:

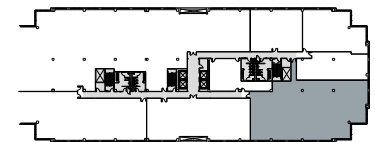
**AVISON  
YOUNG**

OWNED & MANAGED BY:



**CORPORATE OFFICE  
PROPERTIES TRUST**

CORPORATE OFFICE  
PROPERTIES TRUST  
6711 COLUMBIA GATEWAY DRIVE  
COLUMBIA, MD 21046  
443-285-5400 . WWW.COPT.COM



**KEY PLAN**

FLOOR PLAN NOT TO SCALE. SHADED AREAS  
REPRESENT EXTENT OF SUITE.

# FOR MORE INFORMATION CONTACT:

**GREG TOMASSO**

202.644.8551

GREG.TOMASSO@AVISONYOUNG.COM

**JONATHAN WELLBORN**

202.644.8552

JONATHAN.WELLBORN@AVISONYOUNG.COM

**LAURYN HARRIS**

202.644.8680

LAURYN.HARRIS@AVISONYOUNG.COM



**AVISON  
YOUNG**

 **COPT**  
CORPORATE OFFICE  
PROPERTIES TRUST