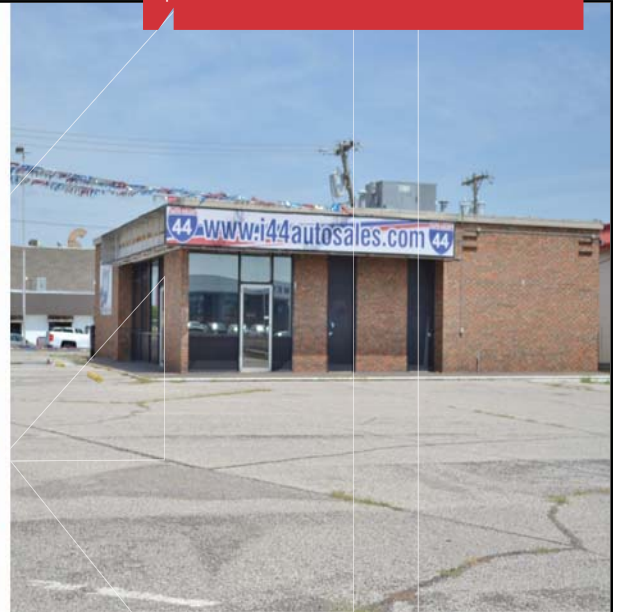


NAI Sullivan Group

Retail Building For Lease

1,783 SF on 0.50 Acres

Lease Price:
\$30.00/SF NNN



4000 N. May Avenue

Oklahoma City, Oklahoma 73112

PROPERTY HIGHLIGHTS

- Pylon Sign Available
- Great Highway Visibility
- Hard Corner
- Easy Access to Lake Hefner Parkway
- Recently Renovated Building
- 25 Parking Spaces



TOTAL SF	1,783 SF MOL
LAND IN ACRES	0.50 MOL
ZONING	C-4
BUILT	1970

www.naisullivangroup.com

NO WARRANTY OR REPRESENTATION, EXPRESS OR IMPLIED, IS MADE AS TO THE ACCURACY OF THE INFORMATION CONTAINED HEREIN, AND THE SAME IS SUBMITTED SUBJECT TO ERRORS, OMISSIONS, CHANGE OF PRICE, RENTAL OR OTHER CONDITIONS, PRIOR SALE, LEASE OR FINANCING, OR WITHDRAWAL WITHOUT NOTICE, AND OF ANY SPECIAL LISTING CONDITIONS IMPOSED BY OUR PRINCIPALS NO WARRANTIES OR REPRESENTATIONS ARE MADE AS TO THE CONDITION OF THE PROPERTY OR ANY HAZARDS CONTAINED THEREIN ARE ANY TO BE IMPLIED.

Amir Shams

Cell: 1 405 313 0333

amir@naisullivangroup.com

4045 N.W. 64th Street, Suite 340

Oklahoma City, Oklahoma 73116

Office: 1 405 840 0600

Fax: 1 405 840 0610

4000 N. May Avenue
Oklahoma City, OK 73112



LOCATION HIGHLIGHTS

- Densely Populated Area
- High Traffic Area

DEMOGRAPHICS

Population		
1 Mile: 14,733	3 Mile: 104,693	5 Mile: 231,429
Average Household Income		
1 Mile: \$45,786	3 Mile: \$48,844	5 Mile: \$43,343
Total Households		
1 Mile: 6,587	3 Mile: 46,515	5 Mile: 98,951



Amir Shams

Cell: 1 405 313 0333

amir@naisullivangroup.com

www.naisullivangroup.com

4045 N.W. 64th Street, Suite 340
Oklahoma City, Oklahoma 73116
Office: 1 405 840 0600
Fax: 1 405 840 0610

NAISullivan Group