

Wenatchee Building



Sumner Corporate Park

2500 142nd Avenue E, Sumner, WA

For Lease 175,723 S.F.

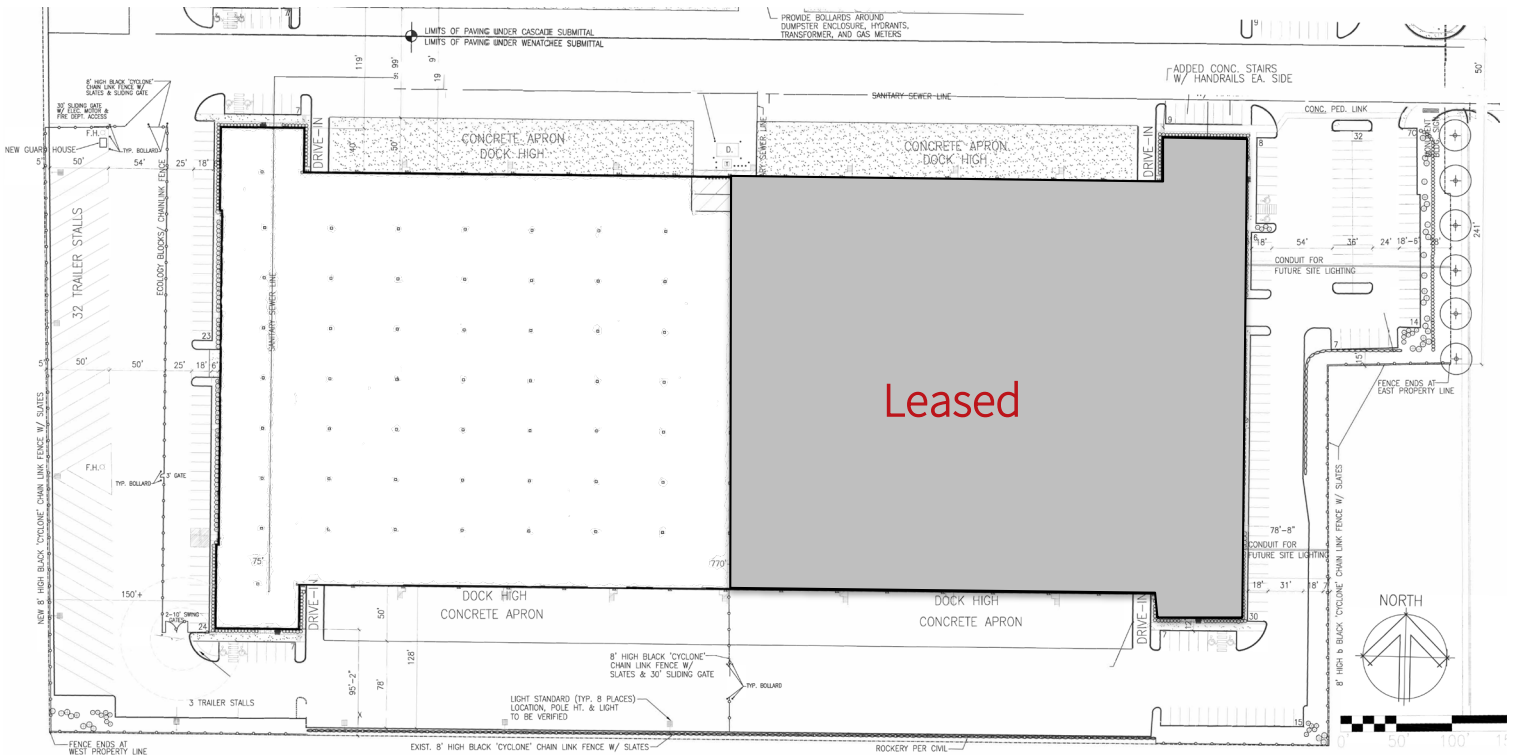
- Less than one mile to SR-167 interchange
- 27 minutes to Port of Tacoma, 35 minutes to Port of Seattle
- Fully secured truck court with trailer parking



Building highlights

- 175,723 s.f. available
- 5,500 s.f. office (4,000 s.f. & 1,500 s.f. spaces)
- 30' clear height
- ESFR sprinkler system
- 50 dock-high loading doors with shelters
- 24 dock doors with EOD levelers and lights
- 26 dock doors with 35,000 lb. mechanical pit levelers and lights
- 4 grade level doors
- Cross dock loading
- Secured loading area on south side of building
- 32 secured trailer parking stalls
- 130' truck maneuverability
- Abundant parking
- 1,000 amps, 277/480v, 3-phase power
- High efficient T-5 lighting with motion sensors with 25 FC
- 370' building depth
- 45' x 60' typical column spacing

Building site plan



Aerial

Sumner Corporate Park – Wenatchee Building – 175,723 s.f.



Secured trailer parking, loading, yard



For more information contact:

Scott Carter
+1 425 974 4004
scott.carter@am.jll.com

David Cahill
+1 425 974 4002
david.cahill@am.jll.com



Jones Lang LaSalle
Brokerage, Inc.

©2018 Jones Lang LaSalle IP, Inc. All rights reserved. All information contained herein is from sources deemed reliable; however, no representation or warranty is made to the accuracy thereof.

Corporate neighbors



Regional map

Drive times and distance from the Wenatchee Building



PORT OF TACOMA
27 MINUTES / 11 MILES



SEATAC INTERNATIONAL AIRPORT
33 MINUTES / 22 MILES



PORT OF SEATTLE
35 MINUTES / 29 MILES



SEATTLE
40 MINUTES / 31 MILES



PORTLAND
2 HOURS 25 MINUTES / 152 MILES

