

FOR LEASE

1 Caledon Court Greenville, SC 29615

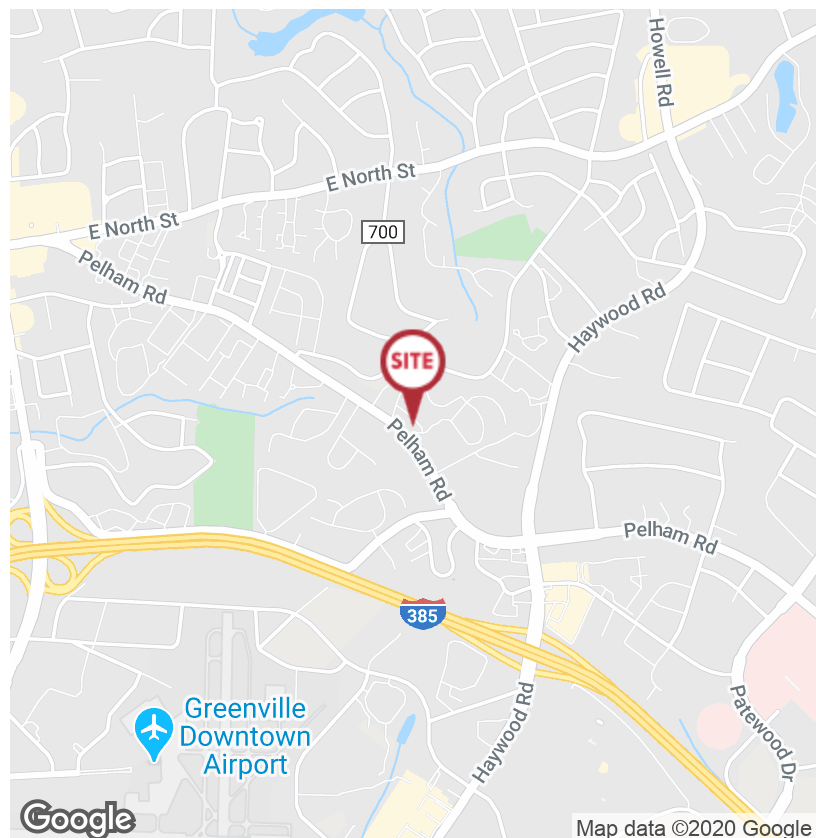


Office | 1,225 - 3,200 SF

- Suite A - available for sublease
- Sublease expires on March 31, 2022
- Suite C - available for lease
- Lease rate excludes janitorial
- Conveniently located to Haywood Road, I-385 & I-85
- Outside city limits

Available Spaces

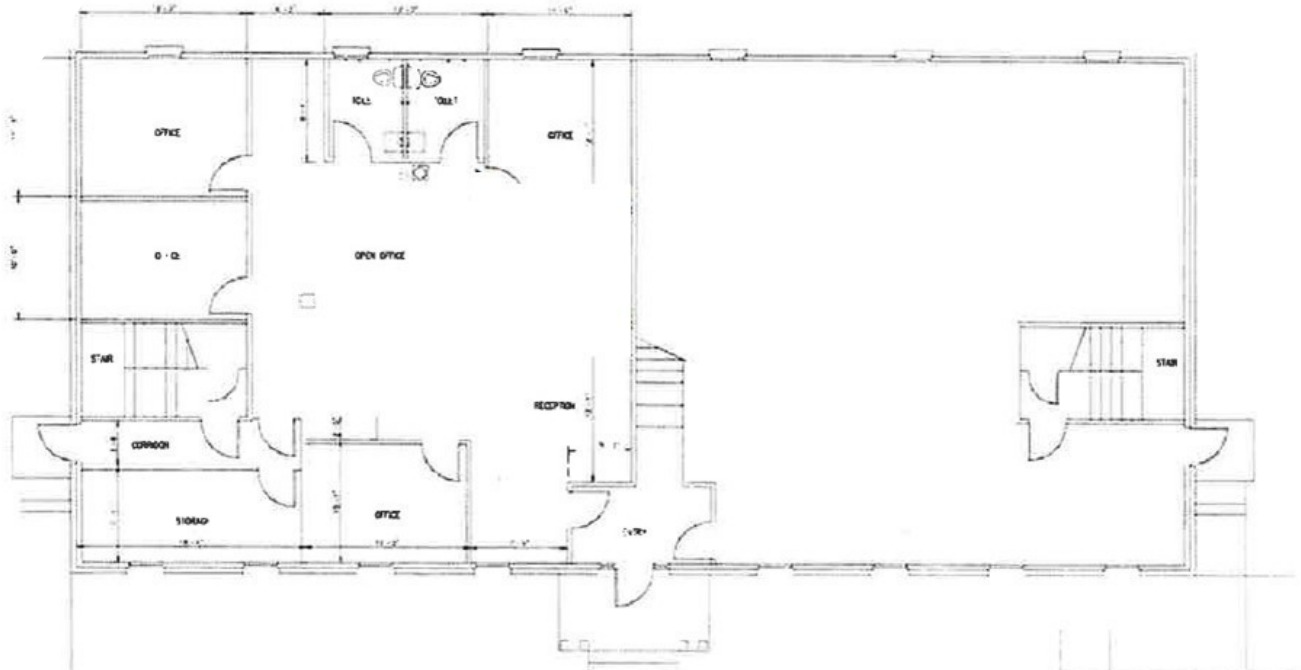
Spaces	Lease Rate	Size (SF)
1 Caledon Court, Suite A	\$13.00 SF/yr	3,200
1 Caledon Court, Suite C	\$14.00 SF/yr	1,225



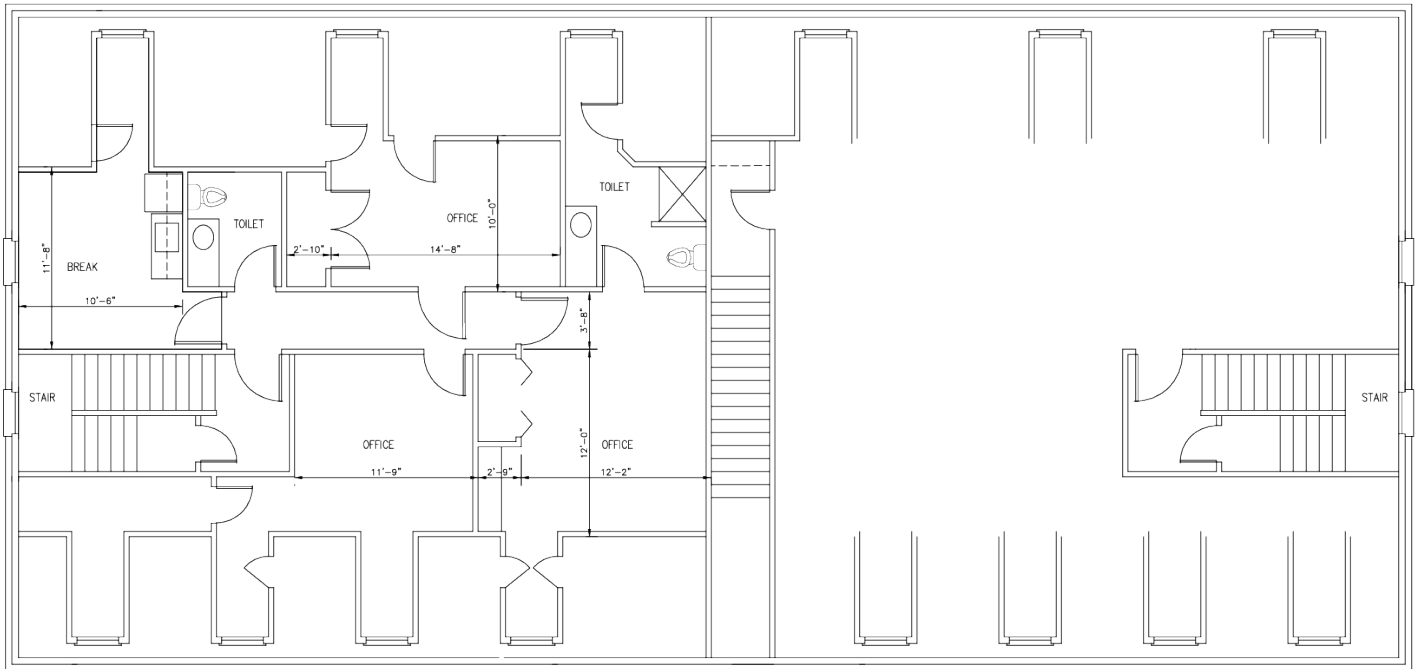
FOR LEASE

1 Caledon Court Greenville, SC 29615

SUITE A



First Floor



Second Floor

✉ **Keith Jones, CCIM, SIOR**
O: +1 864 232 9040
keith@naiearlefurman.com

✉ **Patrick "McNeil" Epps**
O: +1 864 232 9040 x5956
C: +1 803 473 0179
mepps@naiearlefurman.com

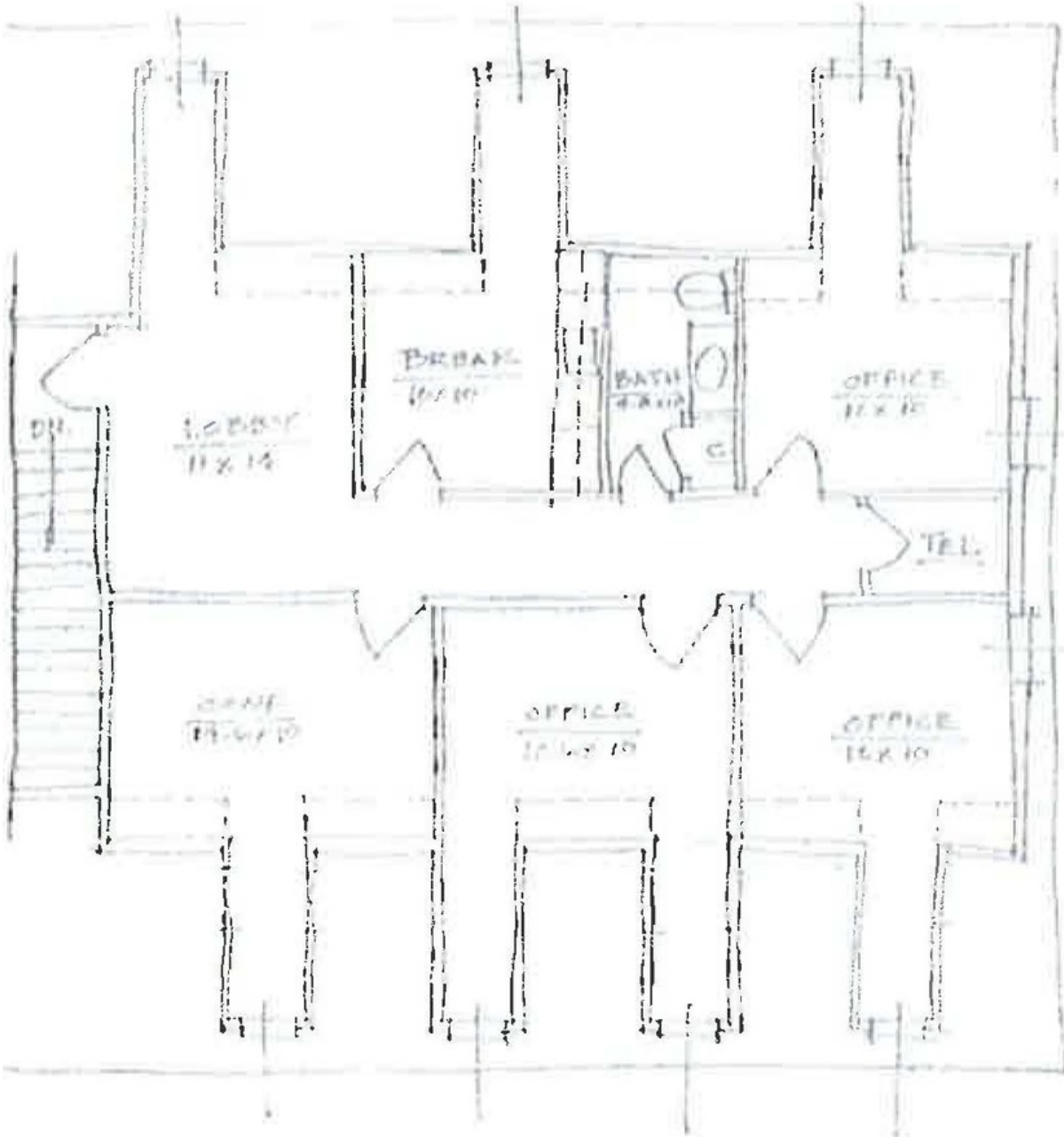
No Warranty Or Representation, Express Or Implied, Is Made As To The Accuracy Of The Information Contained Herein, And The Same Is Submitted Subject To Errors, Omissions, Change Of Price, Rental Or Other Conditions, Prior Sale, Lease Or Financing, Or Withdrawal Without Notice, And Of Any Special Listing Conditions Imposed By Our Principals No Warranties Or Representations Are Made As To The Condition Of The Property Or Any Hazards Contained Therein Are Any To Be Implied.

NAI Earle Furman

FOR LEASE

1 Caledon Court Greenville, SC 29615

SUITE C



✉ Keith Jones, CCIM, SIOR
O: +1 864 232 9040
keith@naiearlefurman.com

✉ Patrick "McNeil" Epps
O: +1 864 232 9040 x5956
C: +1 803 473 0179
mepps@naiearlefurman.com

No Warranty Or Representation, Express Or Implied, Is Made As To The Accuracy Of The Information Contained Herein, And The Same Is Submitted Subject To Errors, Omissions, Change Of Price, Rental Or Other Conditions, Prior Sale, Lease Or Financing, Or Withdrawal Without Notice, And Of Any Special Listing Conditions Imposed By Our Principals No Warranties Or Representations Are Made As To The Condition Of The Property Or Any Hazards Contained Therein Are Any To Be Implied.

NAI Earle Furman