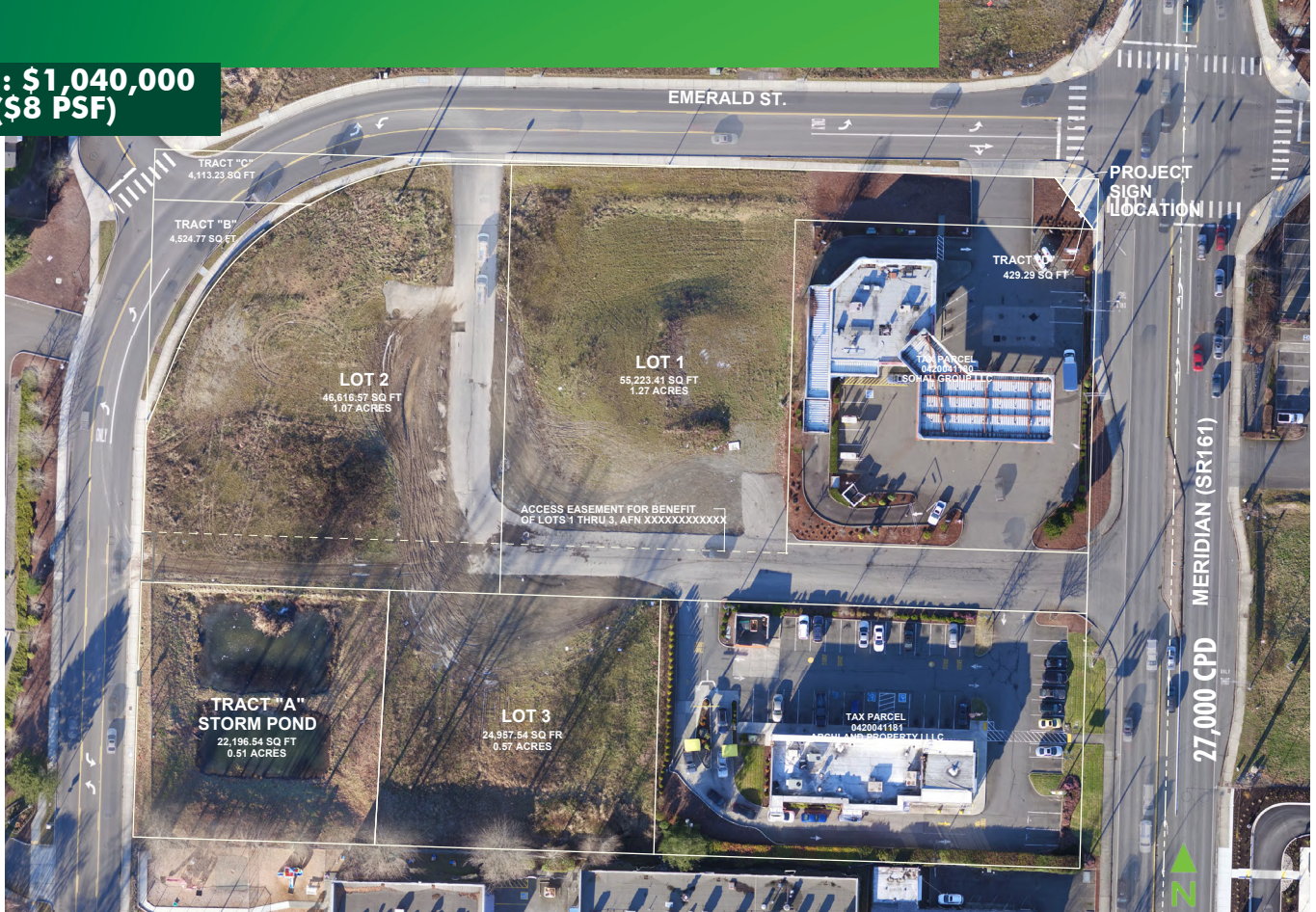


FOR SALE

EMERALD WAY

524 MERIDIAN AVE E
MILTON, WASHINGTON 98354

PRICE: \$1,040,000
(\$8 PSF)



SITE DETAILS

- + Lot 1: 55,223 SF
- + Lot 2: 46,616 SF
- + Lot 3: 24,957 SF
- + Zoning B: Business District
- + 3.42 acres (three lots)
- + High exposure with multiple ingress & egress
- + Storm water infrastructure in place
- + 27,000 cars per day on Meridian Ave E



CONTACT US

KETNER SHEEAN

Senior Associate
+1 253 596 0028
ketner.sheean@cbre.com

BOB HACKER

Vice President
+1 253 596 0049
bob.hacker@cbre.com

CBRE, INC.

1201 Pacific Avenue
Suite 1502
Tacoma, WA 98402

www.cbre.us/tacoma

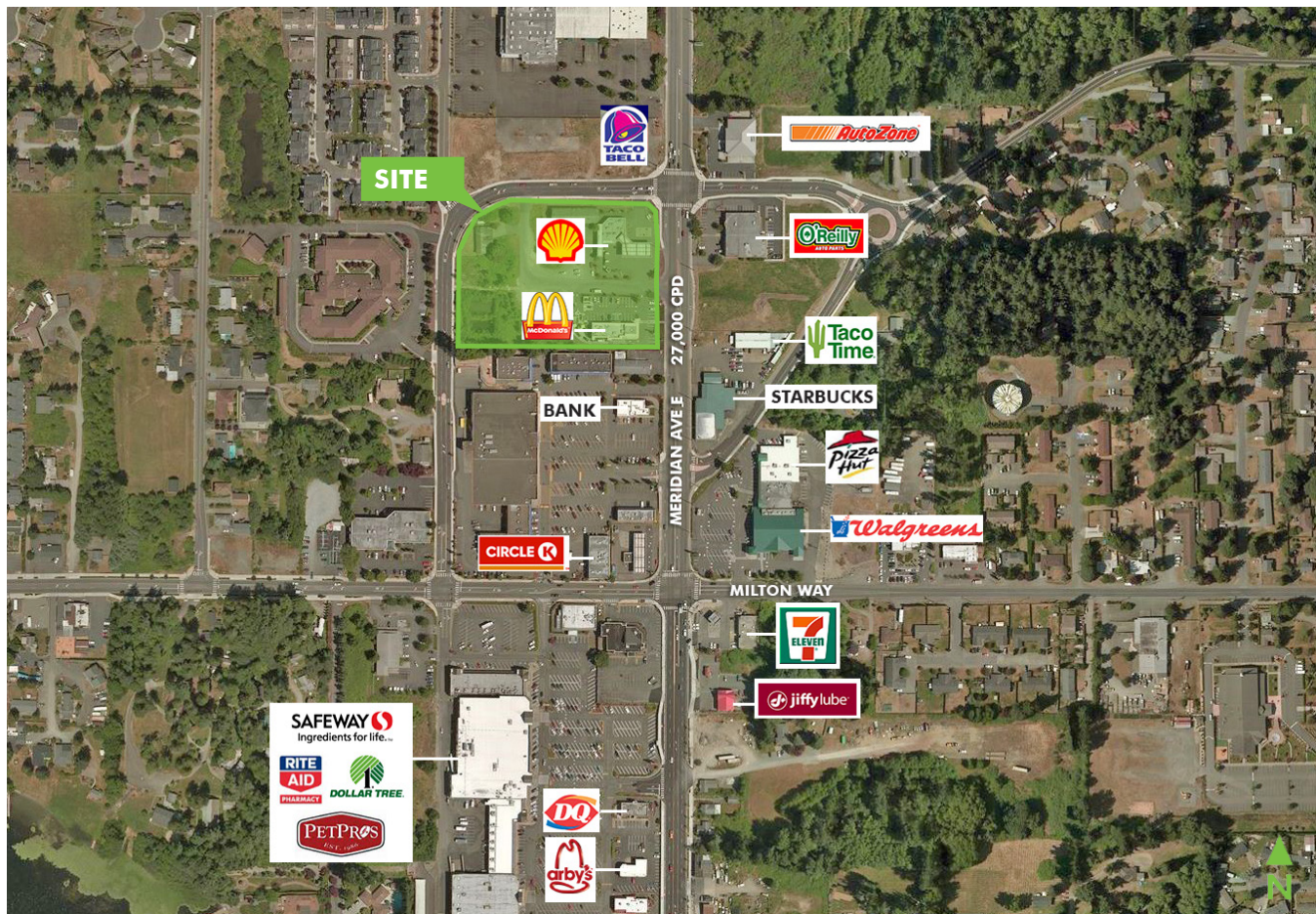
CBRE

FOR SALE EMERALD WAY

524
MERIDIAN AVENUE E
Milton, WA 98354



LOCATION MAP



CONTACT US

KETNER SHEEAN

Senior Associate
+1 253 596 0028
ketner.sheean@cbre.com

BOB HACKER

Vice President
+1 253 596 0049
bob.hacker@cbre.com

CBRE, INC.

1201 Pacific Avenue
Suite 1502
Tacoma, WA 98402

© 2018 CBRE, Inc. The information contained in this document has been obtained from sources believed reliable. While CBRE, Inc. does not doubt its accuracy, CBRE, Inc. has not verified it and makes no guarantee, warranty or representation about it. It is your responsibility to independently confirm its accuracy and completeness. Any projections, opinions, assumptions or estimates used are for example only and do not represent the current or future performance of the property. The value of this transaction to you depends on tax and other factors which should be evaluated by your tax, financial and legal advisors. You and your advisors should conduct a careful, independent investigation of the property to determine to your satisfaction the suitability of the property for your needs. Photos herein are the property of their respective owners and use of these images without the express written consent of the owner is prohibited. CBRE and the CBRE logo are service marks of CBRE, Inc. and/or its affiliated or related companies in the United States and other countries. All other marks displayed on this document are the property of their respective owners. sc 06.13.19

www.cbre.us/tacoma

CBRE