

# ONE HARMON PLAZA

1 HARMON PLAZA | SECAUCUS, NJ 07094



# PROPERTY SPECIFICATIONS

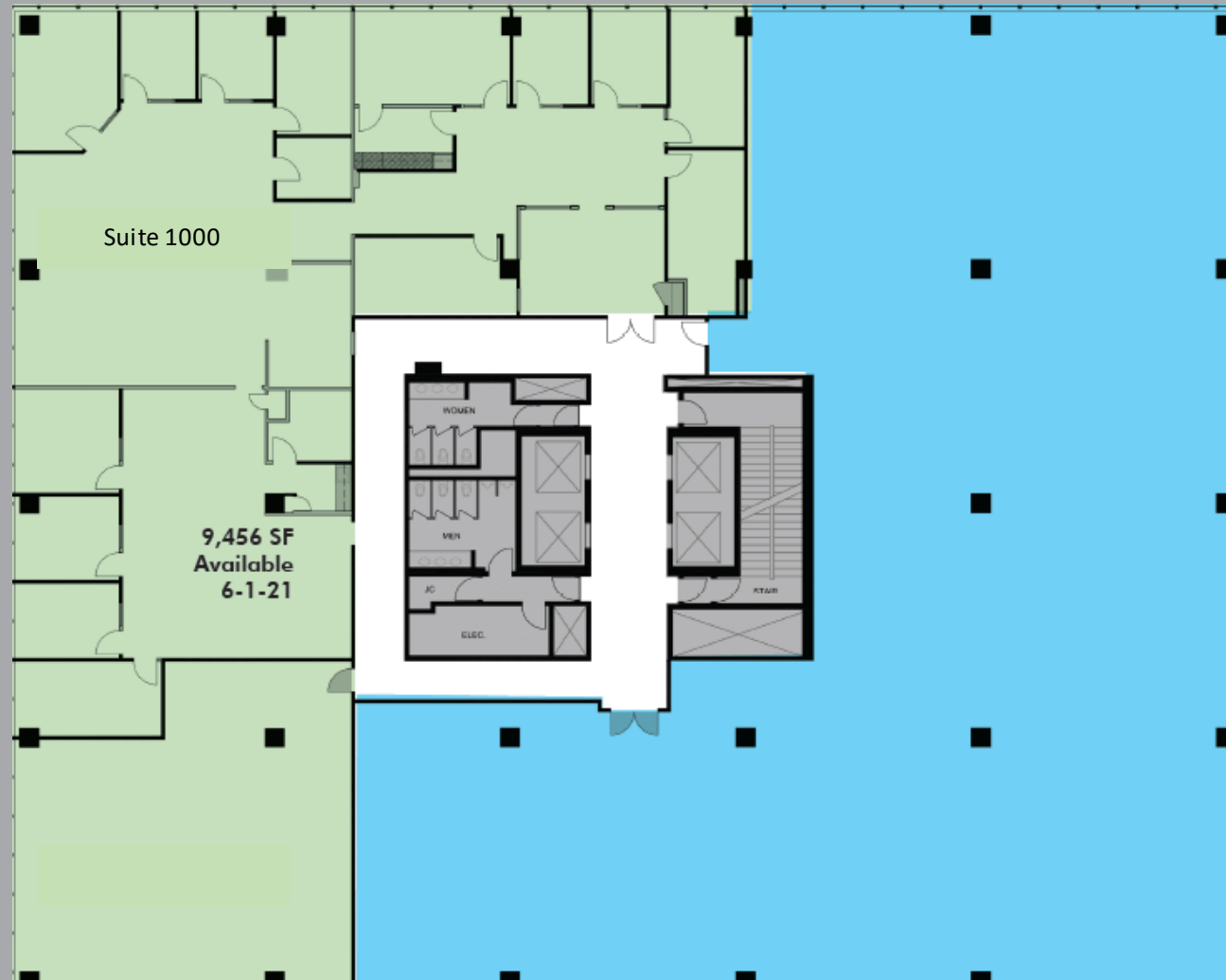
<b>Total Available:</b>	10 <sup>th</sup> Floor Penthouse 9,456 sq. ft. (available 6/1/21)
	8 <sup>th</sup> Floor (suite 803) 2,634 (available)
	8 <sup>th</sup> Floor (suite 801) 8,591 SF (available 6/1/21)
	2 <sup>nd</sup> floor (suite 220) 1,575 SF (available)
	(Note: Suites 801 & 803 can be combined for 11,225 SF)
<b>Asking Rent:</b>	\$27.00/sq. ft. + TE
<b>Term:</b>	Negotiable
<b>Power:</b>	3 separate feeds: Front Office – 400 Amps @ 460 Volt 3 Phase Center – 500 Amps @ 460 Volt 3 Phase Rear – 2,000 Amps @ 460 Volt 3 Phase

## PROPERTY HIGHLIGHTS

- Recent renovations include common area, café, fitness & conference center
- Top of building signage available
- Covered parking
- On-site management
- Five minutes from Secaucus Junction with NJ Transit shuttle service one block from the building
- Five miles from the Lincoln Tunnel

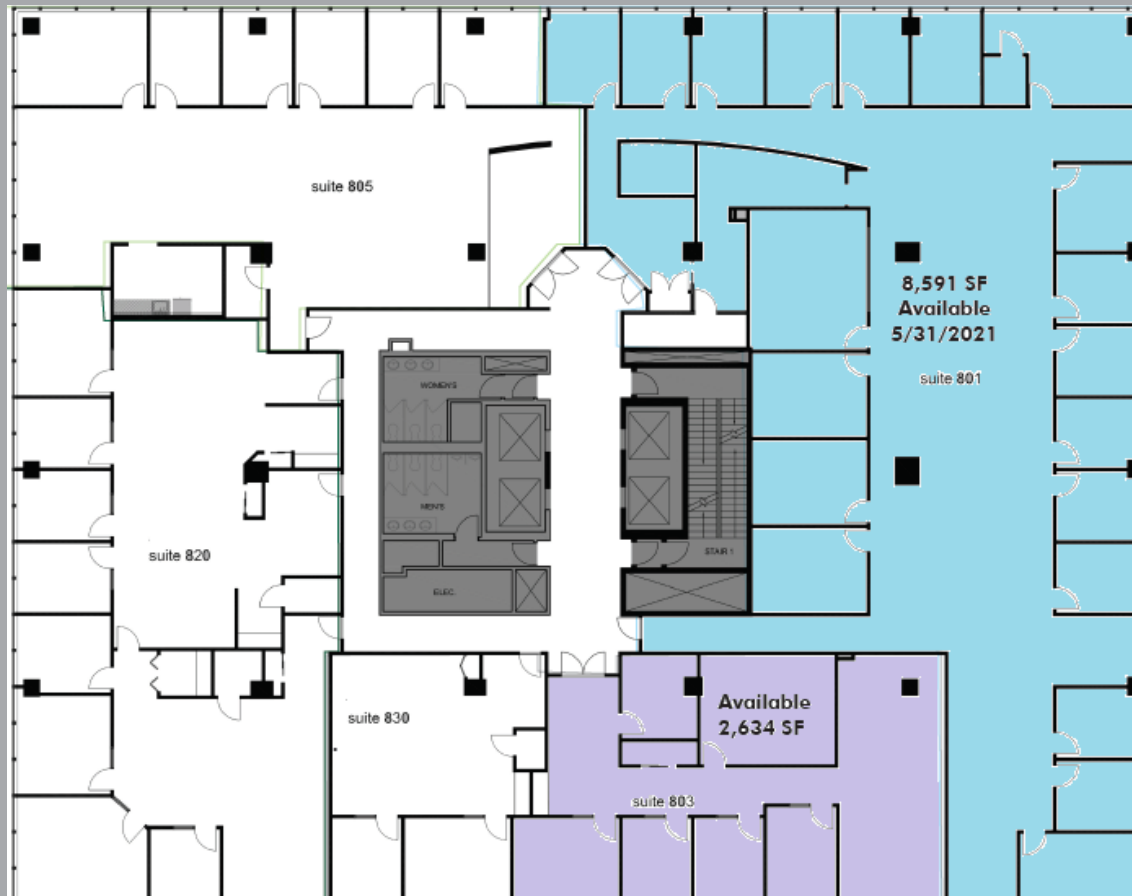


# FLOOR PLANS



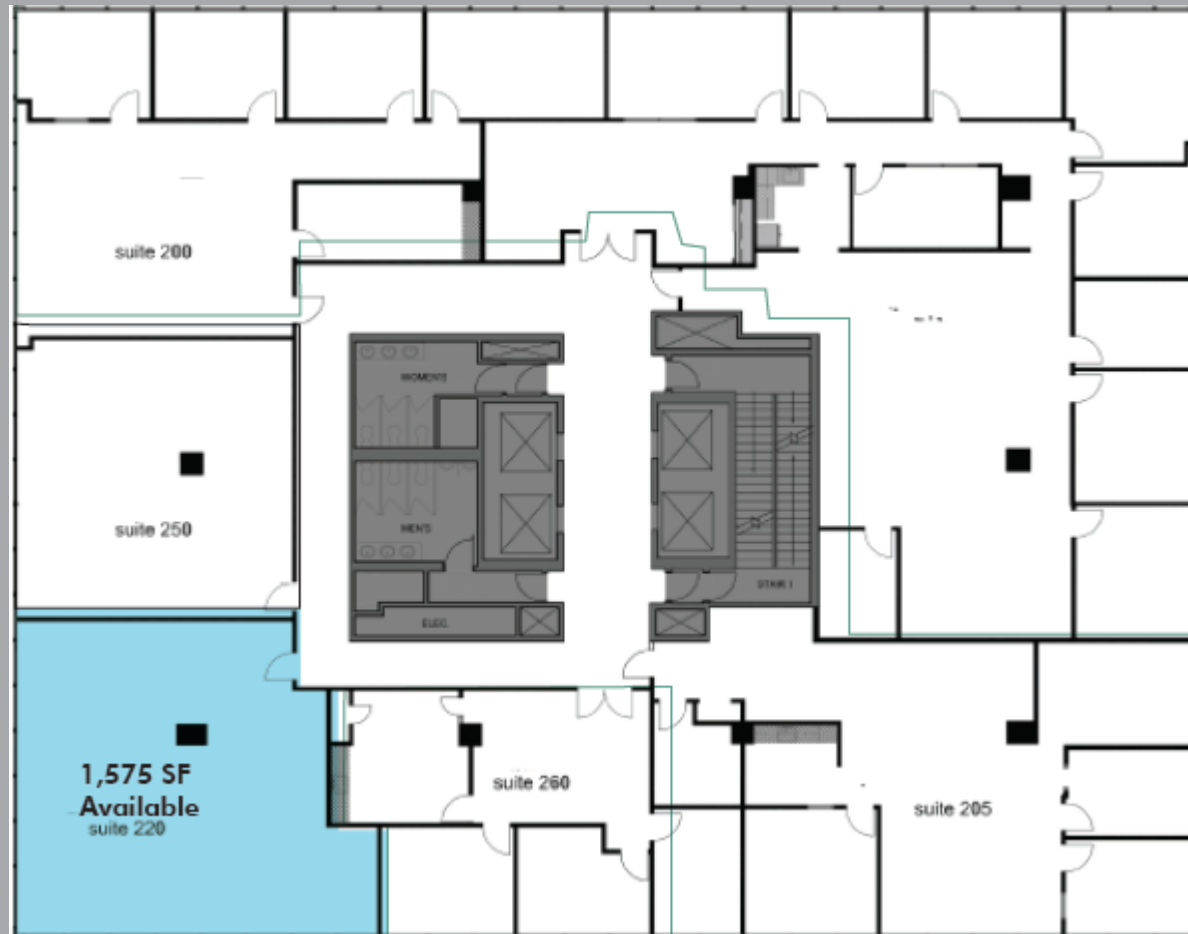
10<sup>th</sup> Floor

# FLOOR PLANS



8<sup>th</sup> Floor

# FLOOR PLANS



2nd Floor



## CONTACT US

### **GREG BARKAN**

Senior Vice President  
+1 201 712 5812  
[greg.barkan@cbre.com](mailto:greg.barkan@cbre.com)

### **ROBERT NORTON**

First Vice President  
+1 201 712 5890  
[robert.norton@cbre.com](mailto:robert.norton@cbre.com)

### **SAMUEL BERNHAUT**

First Vice President  
+1 201 712 5884  
[samuel.bernhaut@cbre.com](mailto:samuel.bernhaut@cbre.com)

© 2019 CBRE, Inc. All rights reserved. This information has been obtained from sources believed reliable, but has not been verified for accuracy or completeness. You should conduct a careful, independent investigation of the property and verify all information. Any reliance on this information is solely at your own risk. CBRE and the CBRE logo are service marks of CBRE, Inc. All other marks displayed on this document are the property of their respective owners, and the use of such logos does not imply any affiliation with or endorsement of CBRE. Photos herein are the property of their respective owners. Use of these images without the express written consent of the owner is prohibited.

**CBRE**