

8693 Mentor Avenue (SR 20)

3,469± SF Retail/Office Space For Sale/For Lease

Mentor, Ohio 44060 (Lake County)

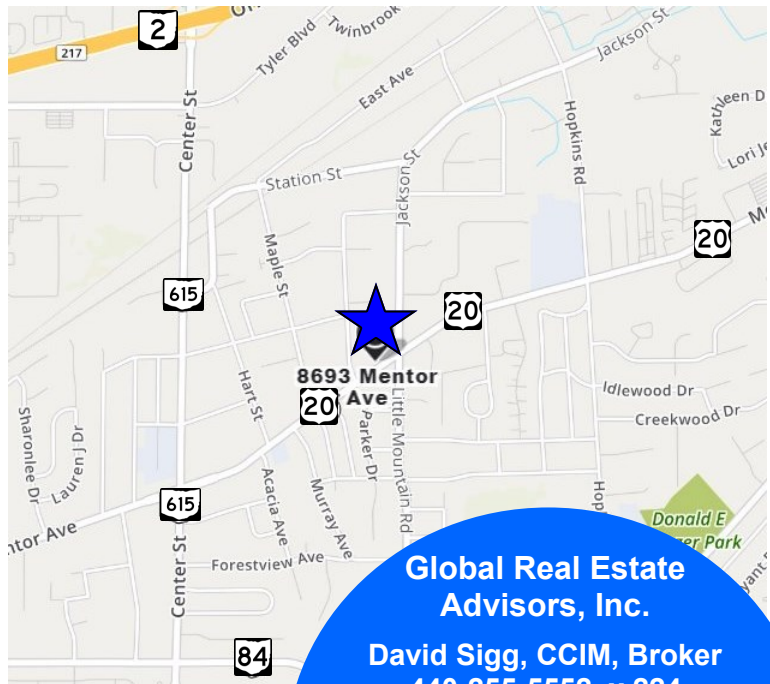


8693 Mentor Avenue, Mentor, Ohio 44060

Property Features:

- 3,469± SF Retail/Office Space plus Basement Space
- .11 Acres
- Built in 1910
- Two Restrooms
- New Floor in Main Area - Spring 2019
- Heat & Air Conditioning
- 40'± Frontage
- Zoned B-2 General Business - Great for Retail, Office or Restaurants
- Located near SR 615 between SR 2 and I-90

Sale Priced at \$250,000.00
Lease Price at \$5.50 psf NNN



**Global Real Estate
Advisors, Inc.**

David Sigg, CCIM, Broker
440-255-5552 x 224
440-668-3300 Cell

Sigg@GlobalCommercialRE.com

Neil Sawicki, SIOR, Broker
440-255-5552 x 221
Neil@GlobalCommercialRE.com



www.GlobalCommercialRE.com
8585 East Ave., Mentor, Ohio 44060

Real Estate Advisors Inc.
BROKER

This information has been secured from sources we believe are reliable, but we make no representations or warranties, expressed or implied, as to the accuracy of the information. References to condition, square footage or age are approximate. Buyer or Tenant acknowledges that they are relying on their own investigations and are not relying on Broker provided information. Procuring broker shall only be entitled to a commission, calculated in accordance with the rates approved by our principal only if such procuring broker executes a brokerage agreement acceptable to us and our principal and the conditions as set forth in the brokerage agreement are fully and unconditionally satisfied. Although all information furnished regarding property for sale, rental, or financing is from sources deemed reliable, such information has not been verified and no express representation is made nor is any to be implied as to the accuracy thereof and it is submitted subject to errors, omissions, change of price, rental or other conditions, prior sale, lease or financing, or withdrawal without notice and to any special conditions imposed by our principal.

8693 Mentor Avenue (SR 20)

3,469± SF Retail/Office Space For Sale/For Lease

Mentor, Ohio 44060 (Lake County)



www.GlobalCommercialRE.com
8585 East Ave., Mentor, Ohio 44060

Real Estate Advisors Inc.
BROKER

**Global Real Estate
Advisors, Inc.**

David Sigg, CCIM, Broker
440-255-5552 x 224
440-668-3300 Cell

Sigg@GlobalCommercialRE.com

Neil Sawicki, SIOR, Broker
440-255-5552 x 221

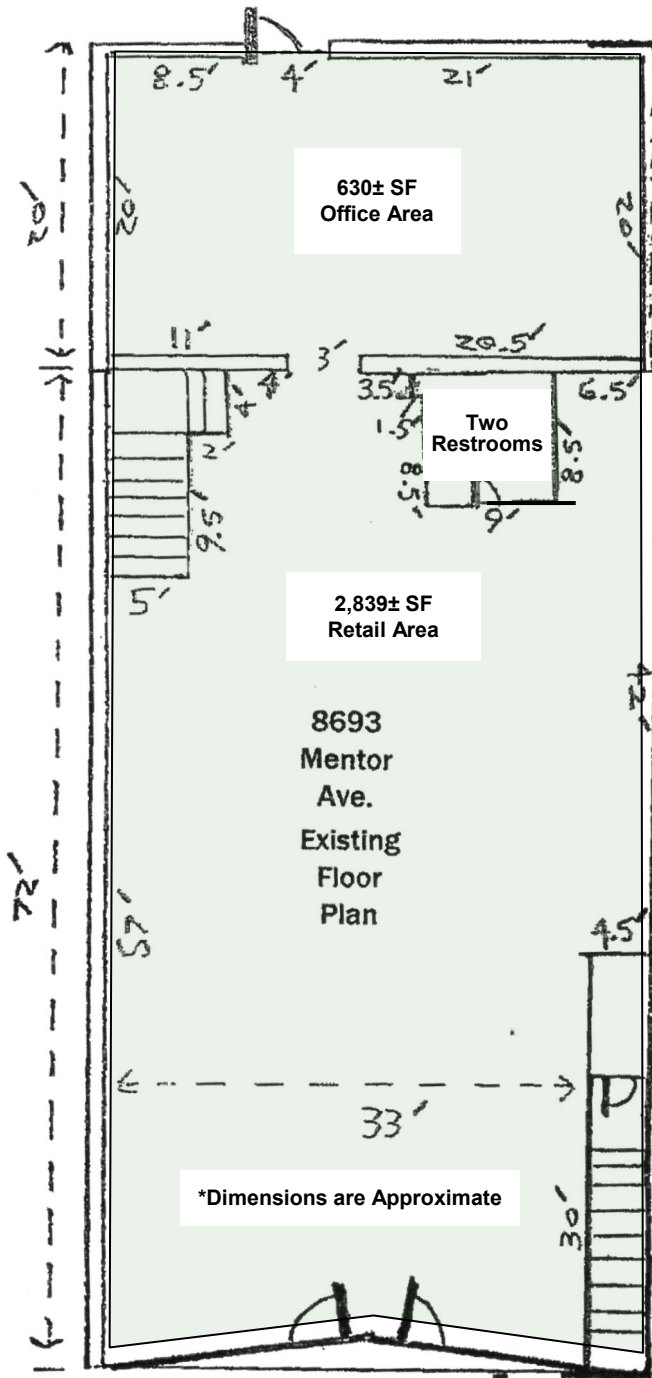
Neil@GlobalCommercialRE.com

This information has been secured from sources we believe are reliable, but we make no representations or warranties, expressed or implied, as to the accuracy of the information. References to condition, square footage or age are approximate. Buyer or Tenant acknowledges that they are relying on their own investigations and are not relying on Broker provided information. Procuring broker shall only be entitled to a commission, calculated in accordance with the rates approved by our principal only if such procuring broker executes a brokerage agreement acceptable to us and our principal and the conditions as set forth in the brokerage agreement are fully and unconditionally satisfied. Although all information furnished regarding property for sale, rental, or financing is from sources deemed reliable, such information has not been verified and no express representation is made nor is any to be implied as to the accuracy thereof and it is submitted subject to errors, omissions, change of price, rental or other conditions, prior sale, lease or financing, or withdrawal without notice and to any special conditions imposed by our principal.

8693 Mentor Avenue (SR 20)

3,469± SF Retail/Office Space For Sale/For Lease

Mentor, Ohio 44060 (Lake County)



www.GlobalCommercialRE.com
8585 East Ave., Mentor, Ohio 44060

Real Estate Advisors Inc.
BROKER

**Global Real Estate
Advisors, Inc.**

David Sigg, CCIM, Broker
440-255-5552 x 224
440-668-3300 Cell

Sigg@GlobalCommercialRE.com

Neil Sawicki, SIOR, Broker
440-255-5552 x 221

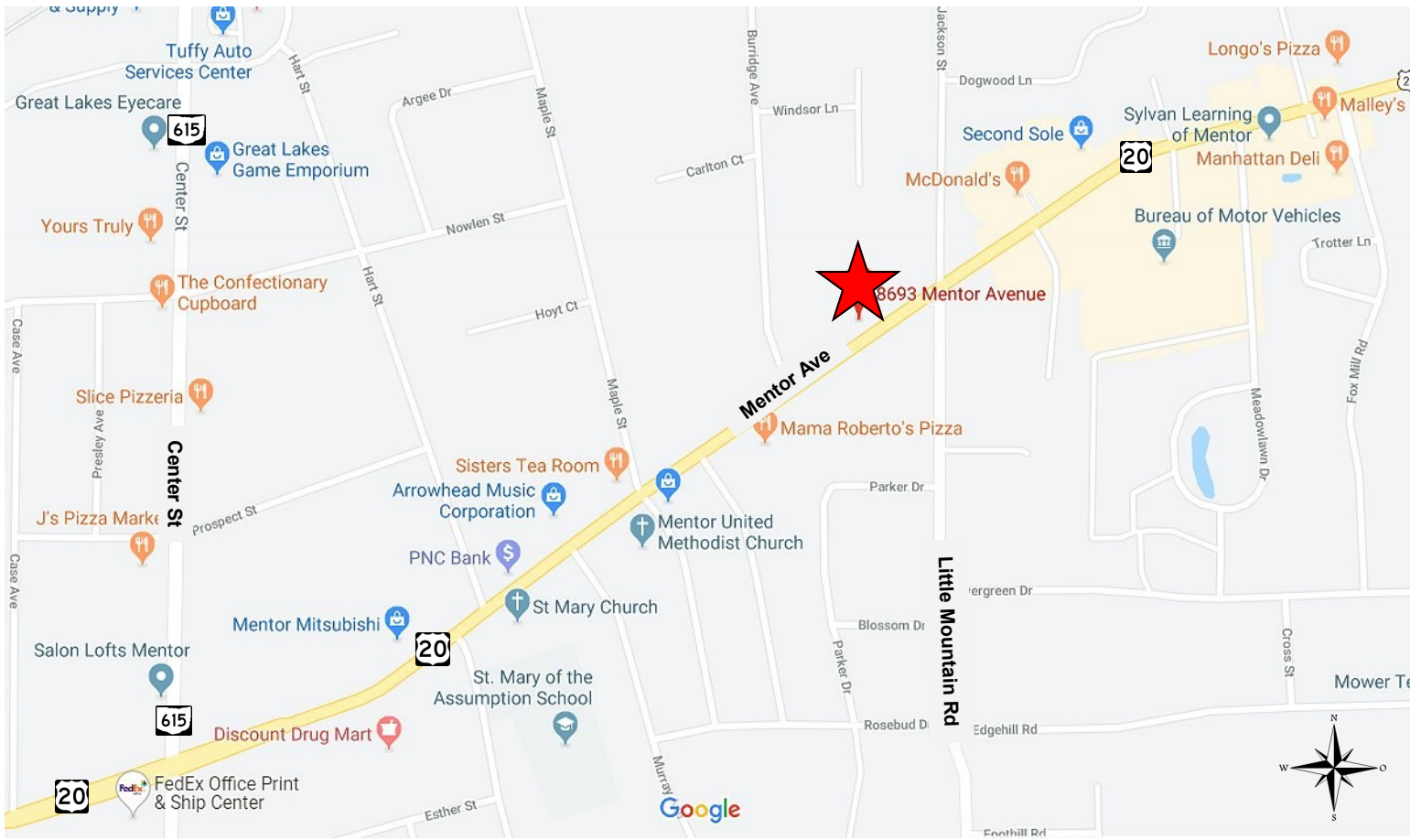
Neil@GlobalCommercialRE.com

This information has been secured from sources we believe are reliable, but we make no representations or warranties, expressed or implied, as to the accuracy of the information. References to condition, square footage or age are approximate. Buyer or Tenant acknowledges that they are relying on their own investigations and are not relying on Broker provided information. Procuring broker shall only be entitled to a commission, calculated in accordance with the rates approved by our principal only if such procuring broker executes a brokerage agreement acceptable to us and our principal and the conditions as set forth in the brokerage agreement are fully and unconditionally satisfied. Although all information furnished regarding property for sale, rental, or financing is from sources deemed reliable, such information has not been verified and no express representation is made nor is any to be implied as to the accuracy thereof and it is submitted subject to errors, omissions, change of price, rental or other conditions, prior sale, lease or financing, or withdrawal without notice and to any special conditions imposed by our principal.

8693 Mentor Avenue (SR 20)

3,469± SF Retail/Office Space For Lease

Mentor, Ohio 44060 (Lake County)



2018 Demographics by STDB	1 Mile	3 Mile	5 Mile
Population	5,930	43,712	103,968
Total Households	2,602	18,105	42,847
Average Household Income	\$78,742	\$92,821	\$85,495
Total Housing Units	2,761	19,164	45,852



www.GlobalCommercialRE.com
8585 East Ave., Mentor, Ohio 44060

Real Estate Advisors Inc.
BROKER

Global Real Estate Advisors, Inc.
David Sigg, CCIM, Broker
 440-255-5552 x 224
 440-668-3300 Cell
Sigg@GlobalCommercialRE.com
Neil Sawicki, SIOR, Broker
 440-255-5552 x 221
Neil@GlobalCommercialRE.com

This information has been secured from sources we believe are reliable, but we make no representations or warranties, expressed or implied, as to the accuracy of the information. References to condition, square footage or age are approximate. Buyer or Tenant acknowledges that they are relying on their own investigations and are not relying on Broker provided information. Procuring broker shall only be entitled to a commission, calculated in accordance with the rates approved by our principal only if such procuring broker executes a brokerage agreement acceptable to us and our principal and the conditions as set forth in the brokerage agreement are fully and unconditionally satisfied. Although all information furnished regarding property for sale, rental, or financing is from sources deemed reliable, such information has not been verified and no express representation is made nor is any to be implied as to the accuracy thereof and it is submitted subject to errors, omissions, change of price, rental or other conditions, prior sale, lease or financing, or withdrawal without notice and to any special conditions imposed by our principal.