
140 East 41st Street

MIDTOWN EAST
NEW YORK, NY



NEWMARK

140 EAST 41ST STREET

Property Details

Location

South block between Lexington & Third Avenues

Approximate Size

7,355 SF

Term

Negotiable

Possession

Arranged

Site Status

Currently Public House

Neighbors

Sinigual, Zengo, Docks Oyster Bar & Seafood Grill, Wagamama, The Capital Grille, Shake Shack, Just Salad, Hale & Hearty, Starbucks, Katagiri, Duane Reade and CVS

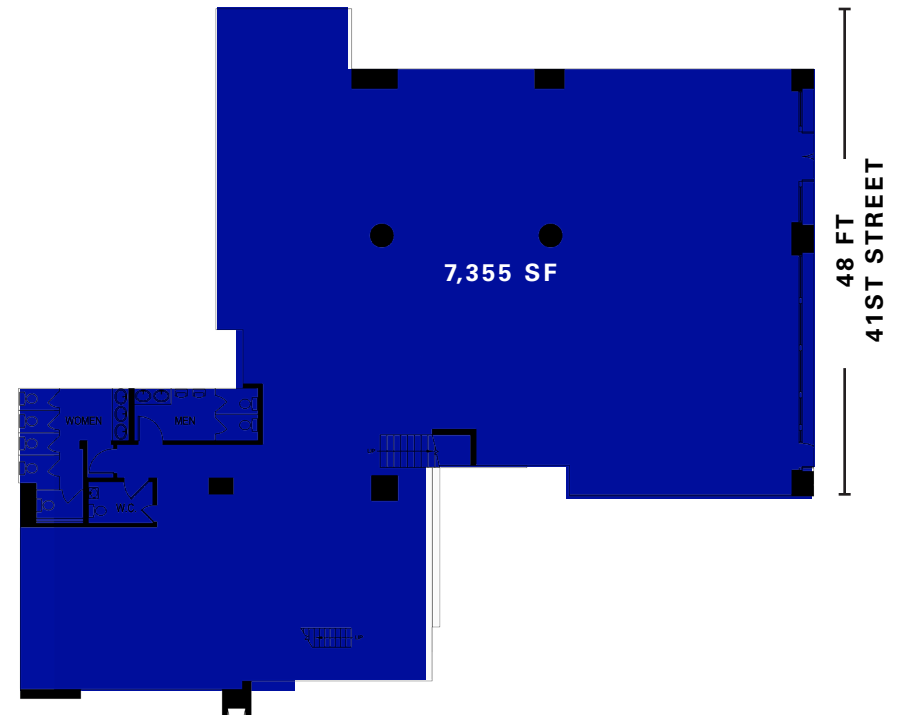
Comments

Rare large 2nd generation restaurant opportunity in the heart of Midtown East

Space features expansive open-air outdoor seating area

Located steps from Grand Central Terminal and the **4 5 6 7 S** subway lines

At the base of a 1 million square foot class A office building and surrounded by 35.9 million square feet of office space within a ¼ mile radius



INTERIOR IMAGES



AREA RETAIL

EAST 44TH STREET

BANK OF AMERICA PLAZA

GRAND CENTRAL TERMINAL

ONE VANDERBILT

BANANA REPUBLIC

vineyard vines

EAST 43RD STREET

CHRYSLER BUILDING

EAST 42ND STREET

EAST 41ST STREET

EAST 40TH STREET

EAST 39TH STREET

EAST 38TH STREET

MADISON AVENUE

PARK AVENUE

LEXINGTON AVENUE

THIRD AVENUE

COMING SOON

CONTACT

Adam Weinblatt
 t 212-372-2103
 aweinblatt@ngkf.com

Lucas Kooyman
 t 212-372-2384
 lkooyman@ngkf.com

Jason Pruger
 t 212-372-2092
 jpruger@ngkf.com
 nmrk.com