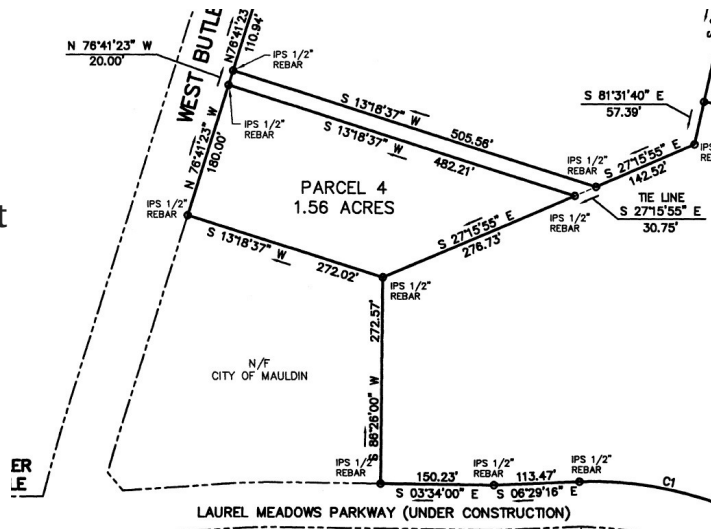
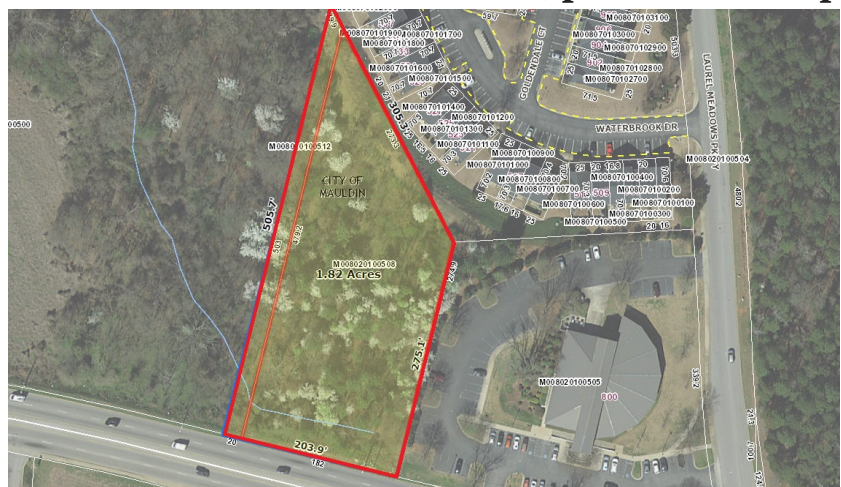




**Price Reduced \$575,000**

## ABOUT THE PROPERTY

Zoned Planned Development  
Approved for Commercial Use  
Parcel 2 & 4 of Laurel Meadows, planned development



**1.82± Acre on West Butler Road**  
**26,000± VPD • Joint retention**  
**202± feet of frontage on West Butler Rd**



**NELSON GARRISON**  
864-430-2356  
COMMERCIAL SALES AND LEASING  
NGARRISON@JOYNERCOMMERCIAL.COM

**STEVE GREER**  
864-444-0296  
COMMERCIAL SALES AND LEASING  
SGREER@JOYNERCOMMERCIAL.COM