

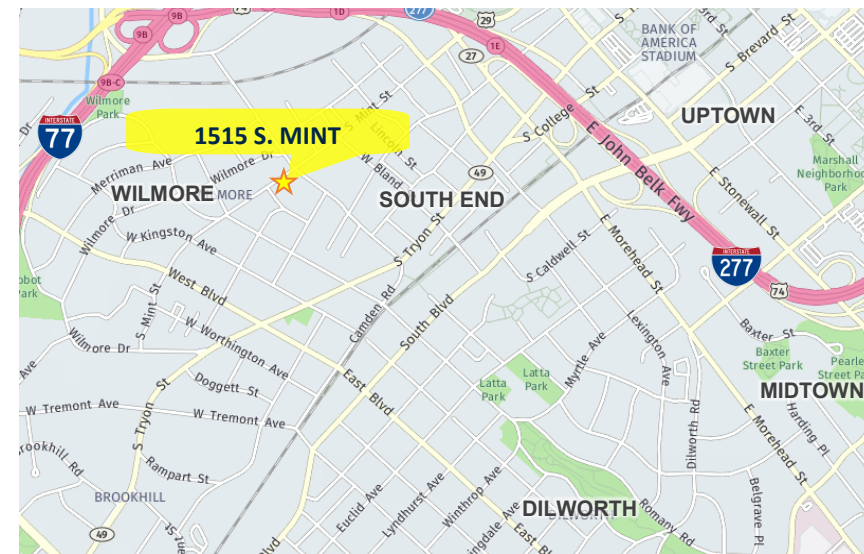
1515 S. MINT STREET

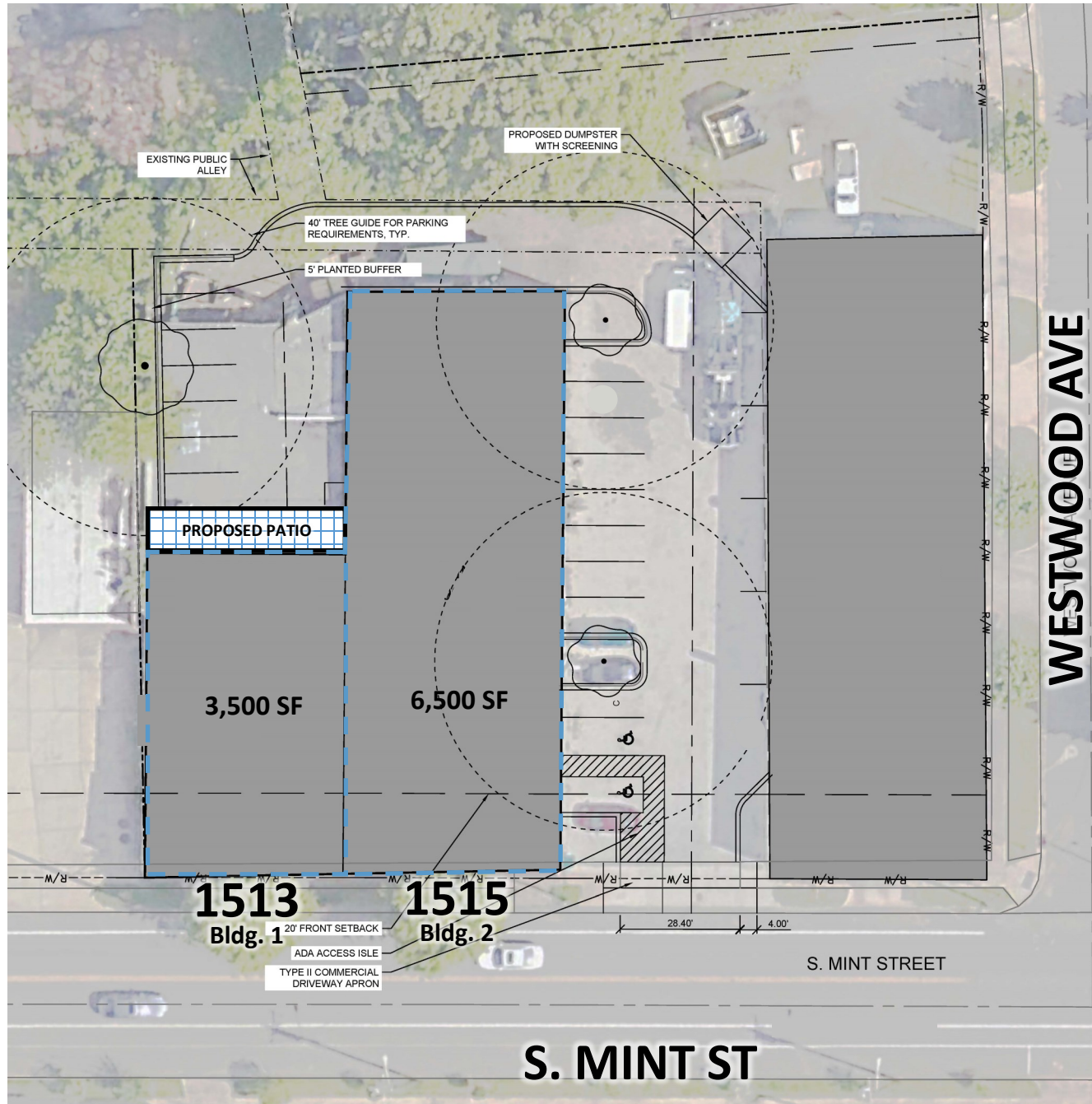
SOUTH END • CHARLOTTE, NORTH CAROLINA



HIGHLIGHTS

- ◆ ±10,000 SF AVAILABLE
- ◆ ON SITE PARKING: ±22 SPACES & ON STREET PARKING: ±38 SPACES
- ◆ WALKABLE TO BARDO, YUME BISTRO, CRAFT, PASTA PROVISIONS, UNKNOWN BREWERY & WOODEN ROBOT BREWERY
- ◆ NEXT DOOR TO MAX & LOLA'S BEER & WINE SHOP
- ◆ OUTSIDE OF THE TRAFFIC GRID: 3 MINUTE DRIVE TO HWY 277 & HWY 77
- ◆ LOCATED IN THE UP AND COMING GOLD DISTRICT IN SOUTH END
- ◆ BUILDING 2 FEATURES 20' + CLEAR BARREL TRUSS ROOF IN REAR





1508 S. MINT ST
BARDO & YUMI
SUMMIT CROSSING
REDEVELOPMENT

1515 S. MINT ST
±10,000 SF

MAX & LOLA'S BODEGA

300 W. SUMMIT AVE
+/- 64,000 SF OFFICE
STILES OFFICE DEVELOPMENT

WEPAK BUILDING
42,000 SF
RECENTLY SOLD TO MAGNUS CAPITAL PARTNERS

S. TRYON ST. @ W. CATHERINE ST.
0.68 AC • SOLD FOR MIXED USE DEVELOPMENT
SPECTRUM COMPANIES

THE RAILYARD
320,000 SF • 30,000 SF RETAIL
100 MICRO APARTMENTS
BEACON PARTNERS DEVELOPMENT

UNKNOWN BREWERY

CRAFT TASTING ROOM

SEUL FOOD MEAT COMPANY

GOLDEN COW CREAMERY

WOODEN ROBOT BREWERY

ALL AMERICAN PUB

SOUTH END GOLD DISTRICT - CHARLOTTE, NC

