



For Lease: 12,000 SF Available

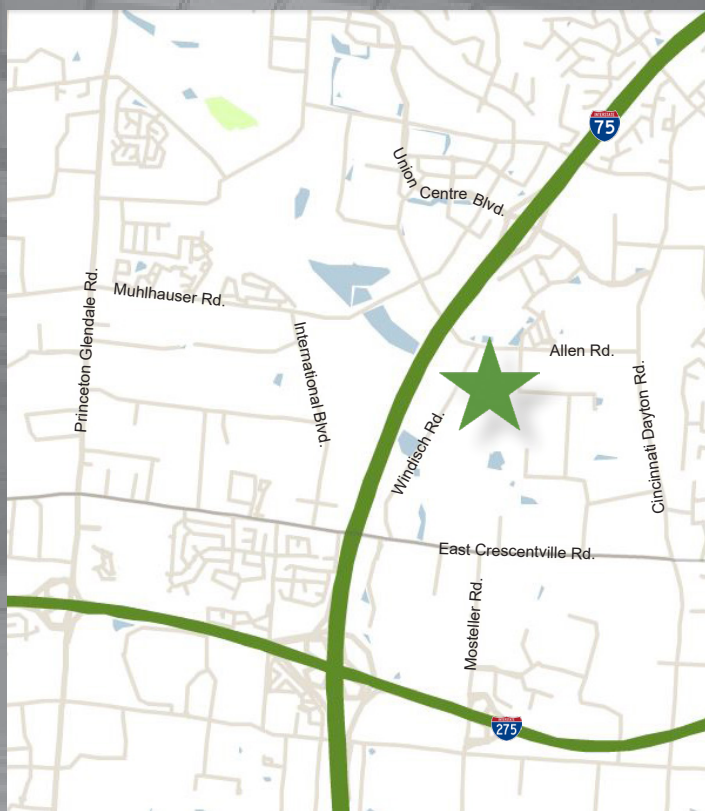
## First Park West Chester IV

9878 Windisch Road | West Chester, OH 45069

First Park West Chester IV is a 60,000 SF office warehouse building. Great West Chester location with easy access to I-275 and I-75. No earnings tax. Partial lab space.

### Highlights

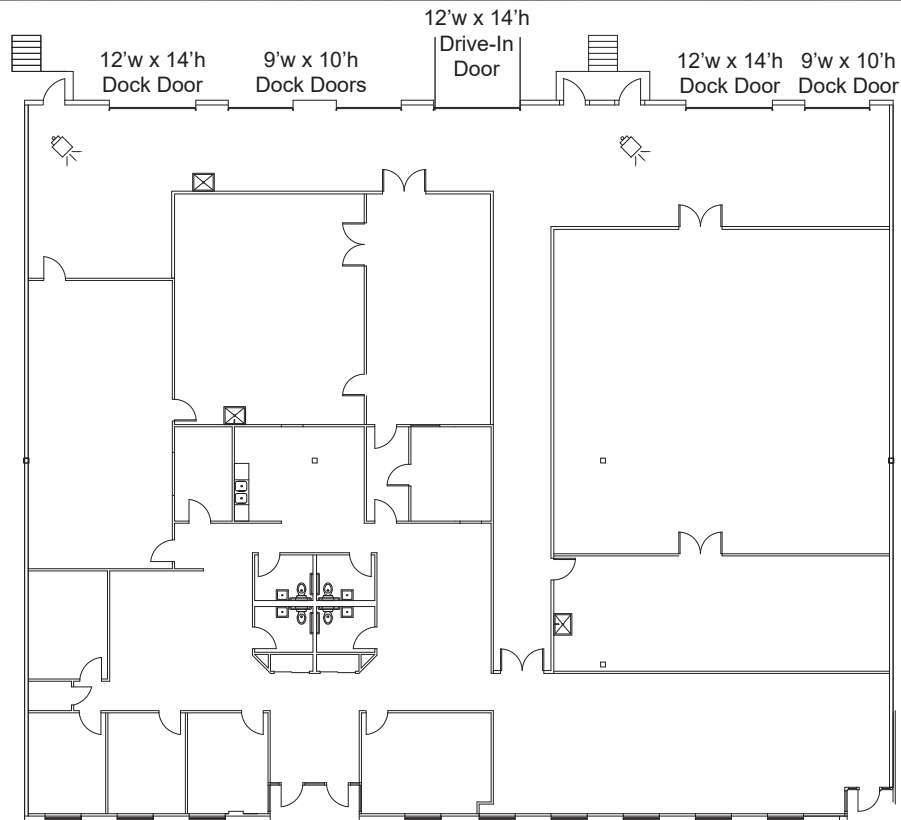
Available SF:	12,000
Office SF:	9,400
Availability Date:	July 1, 2018
Ceiling Height:	20'
Column Spacing:	40' x 50'
Sprinkler System:	Wet
Loading:	3 (9' x 10') Dock doors 2 (12' x 14') Dock doors 1 (12' x 14') Drive-in door
Electrical:	208 v / 3 Phase
Warehouse Lighting:	T5
Zoning:	M2 Industrial
Parking Facilities:	2 / 1,000 s.f.



# First Park West Chester IV

9878 Windisch Road | West Chester, OH 45069

## Space Plan



## Broker Contact:

Mark G. Volkman, SIOR  
Senior Vice President  
312 Walnut Street, Suite 3030  
Cincinnati, OH 45202  
Direct: (513) 252-2123  
mark.volkman@am.jll.com



[www.jll.com/cincinnati](http://www.jll.com/cincinnati)

## Owner Contact:

Daniel Meador  
Regional Director/Market Leader  
1425 Sadlier Circle West Drive  
Indianapolis, IN 46239  
Direct: (317) 352-8391  
dmeador@firstindustrial.com



[www.firstindustrial.com](http://www.firstindustrial.com)

All information furnished regarding the property for sale, rental or financing is obtained from sources deemed reliable. No representation is made to the accuracy thereof and is submitted subject to errors, omissions, change of price rental or other conditions, prior sale, lease, or financing, or withdrawal without notice. First Industrial Realty Trust, Inc. & Jones Lang LaSalle Americas, Inc. represents the Seller in this transaction and as such owes all duties and obligations thereto.