



Property Highlights

- Immediate return on investment
- 5.8 miles to Miami International Airport
- Centrally located with easy access to US1, I-95, Coral Way, Public Transportation/MetroRail
- Close proximity to Coral Gables, Coconut Grove and Downtown Miami
- Minutes from shopping, dining, schools and universities
- 6 Bedrooms, 4 bathrooms
- Approximately ±3,000 SF of floor space
- Approximately ±7,000 SF of land
- Year Built: 1990
- **Total Sale Price: \$675,000**
- **Zoning:** Duplex/MultiFamily
- **Parcel Number**
01-4116-011-2170

<http://properties.avisonyoung.com/3135-sw-26-st>

FOR MORE INFORMATION CONTACT:

Jay Ziv, CCIM, SIOR, ALC

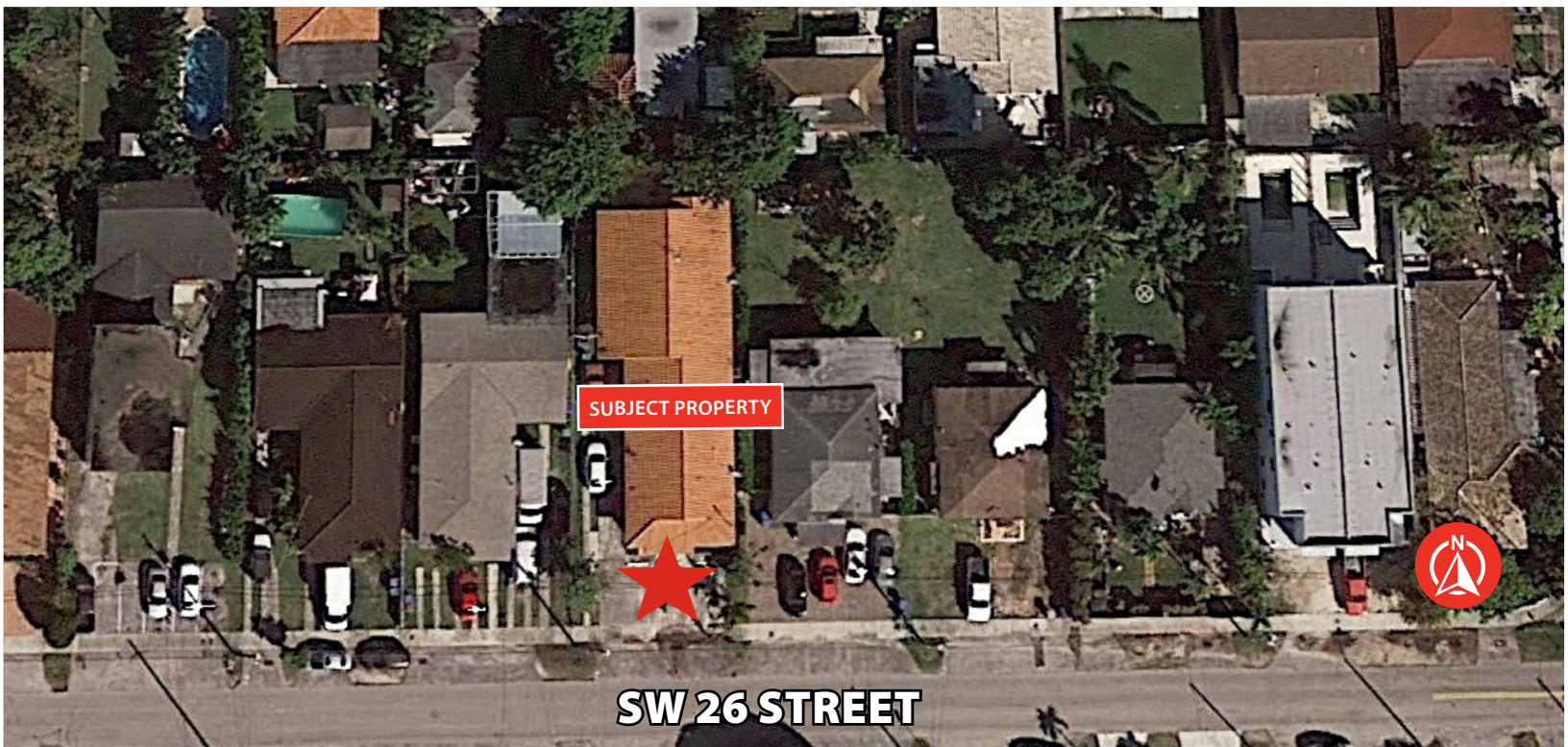
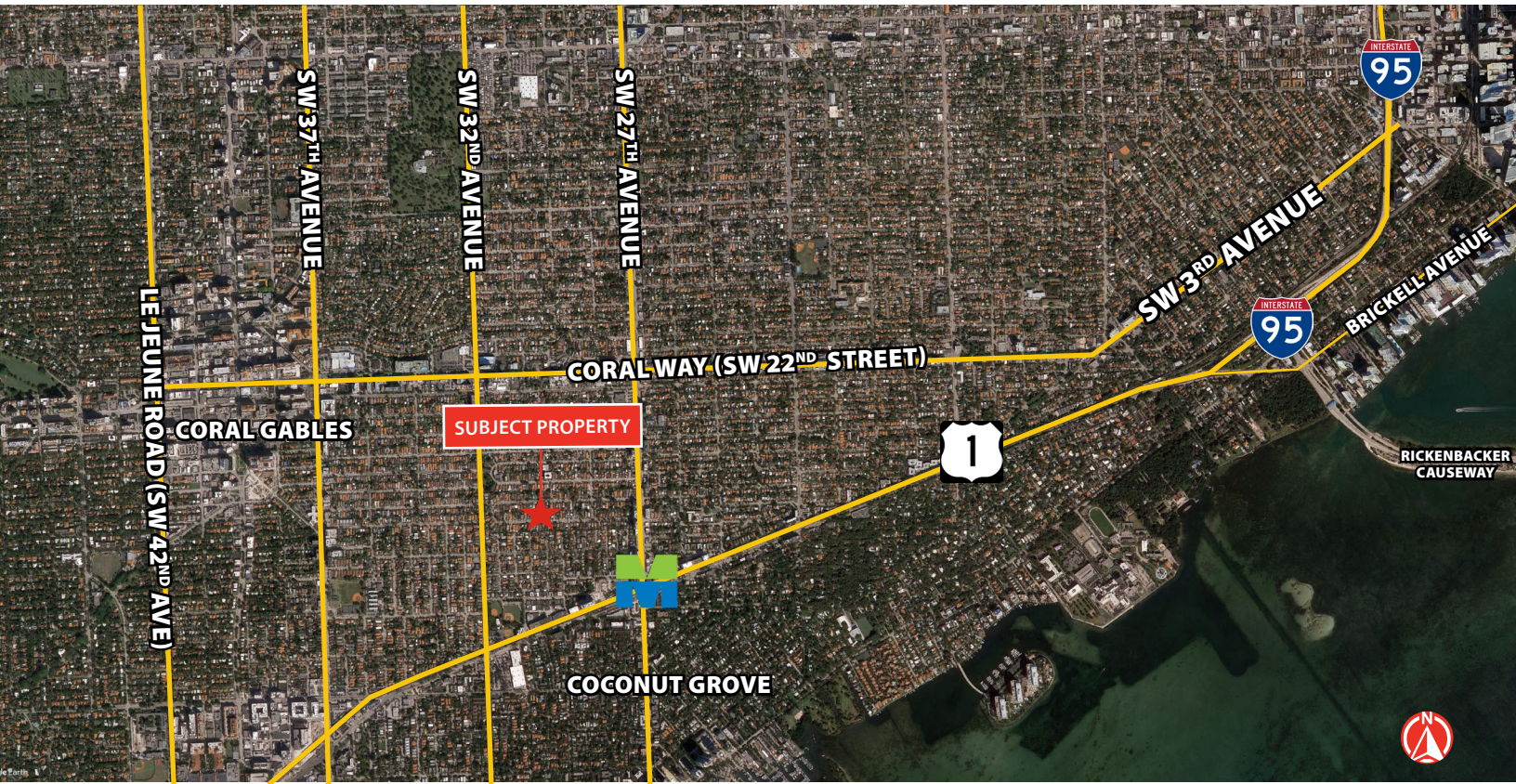
Principal

D 305 447 7849

M 305 498 2200

jay.ziv@avisonyoung.com

3135 SW 26 Street, Miami, FL



FOR MORE INFORMATION CONTACT:

Jay Ziv, CCIM, SIOR, ALC

Principal

D 305 447 7849

M 305 498 2200

jay.ziv@avisonyoung.com