

# FOR LEASE

## WORLD HOUSTON 30

26,000 SQUARE FEET

WWW.INSITEREALTY.COM



5656 N. SAM HOUSTON PKWY E.  
SUITE 100  
HOUSTON, TEXAS

### PROPERTY FEATURES

- BELTWAY 8 FRONTAGE
- 6,500 SF OFFICE SPACE
- 19,500 SF WAREHOUSE
- ESFR SPRINKLER SYSTEM
- TILT-WALL CONSTRUCTION
- 24' CLEAR HEIGHT
- ONE (1) DRIVE-IN, SIX (6) DOCK DOORS
- REAR LOADING
- AMPLE PARKING
- EASY ACCESS TO BUSH IAH, BELTWAY 8, I-45, HWY 59 AND THE HARDY TOLL ROAD



FOR MORE INFORMATION PLEASE CONTACT

LOGAN GREER • LGREER@INSITEREALTY.COM • 713.339.5363

DAYNE WUNDERLICH • DWUNDERLICH@INSITEREALTY.COM • 713.339.5329

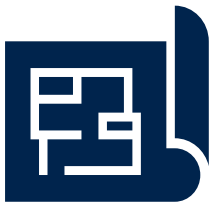
RYLEY CATON • RCATON@INSITEREALTY.COM • 713.339.5336

A PROJECT OF

**EASTGROUP**  
PROPERTIES

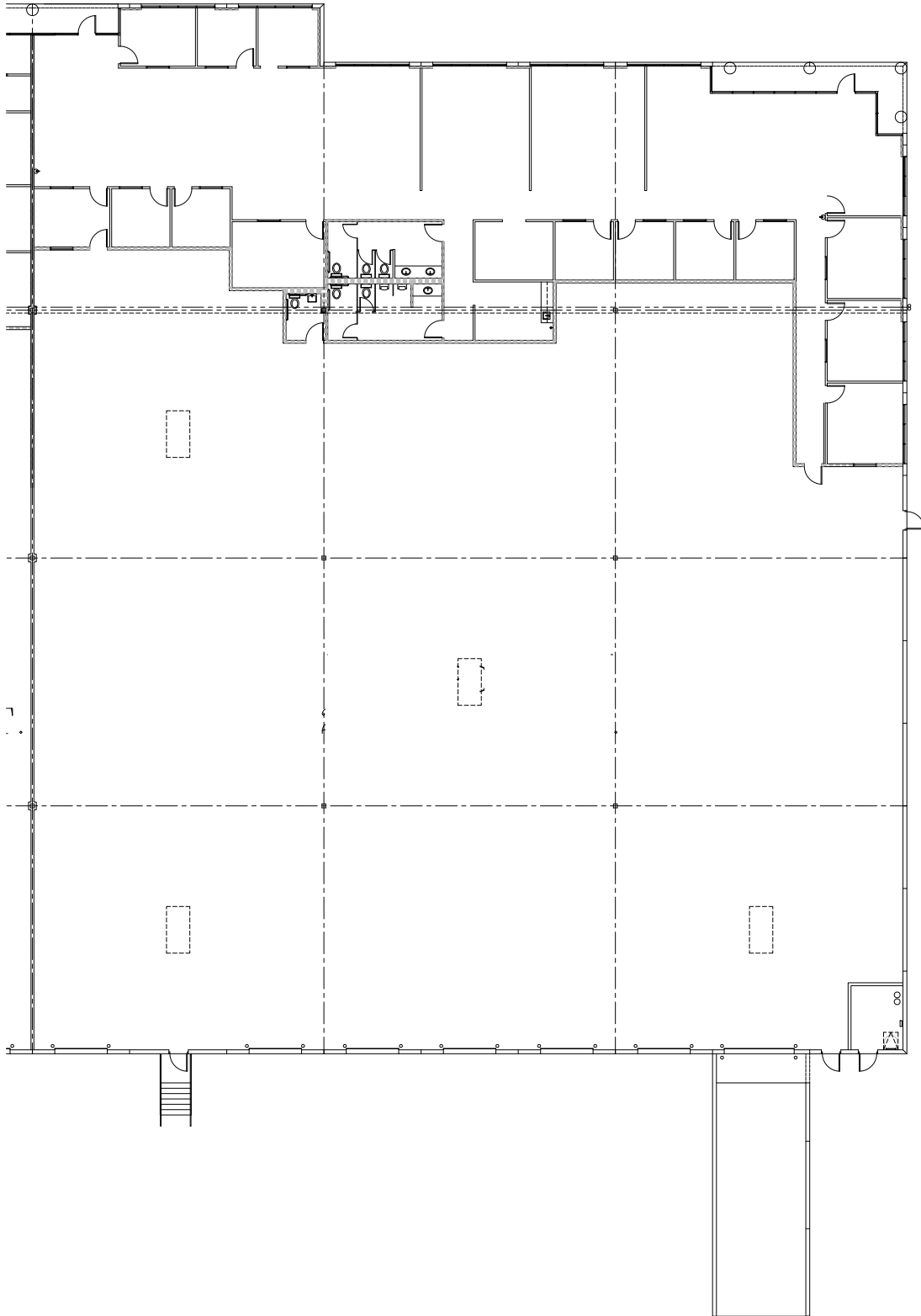
The information contained herein was obtained from sources believed reliable; however, InSite Realty Partners, L.P. makes no guarantees, warranties or representations as to the completeness or accuracy thereof. The presentation of this property is submitted subject to errors, omissions, change of price or conditions, prior sale or lease, or withdrawal without written notice.





# WORLD HOUSTON 30

## SPACE PLAN



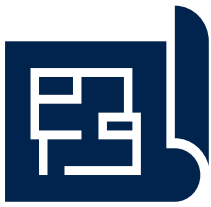
**FOR MORE INFORMATION PLEASE CONTACT**

**LOGAN GREER • LGREER@INSITEREALTY.COM • 713.339.5363**  
**DAYNE WUNDERLICH • DWUNDERLICH@INSITEREALTY.COM • 713.339.5329**  
**RYLEY CATON • RCATON@INSITEREALTY.COM • 713.339.5336**



The information contained herein was obtained from sources believed reliable; however, InSite Realty Partners, L.P. makes no guarantees, warranties or representations as to the completeness or accuracy thereof. The presentation of this property is submitted subject to errors, omissions, change of price or conditions, prior sale or lease, or withdrawal without written notice.





# WORLD HOUSTON 30

## AERIAL



### FOR MORE INFORMATION PLEASE CONTACT

LOGAN GREER • LGREER@INSITEREALTY.COM • 713.339.5363

DAYNE WUNDERLICH • DWUNDERLICH@INSITEREALTY.COM • 713.339.5329

RYLEY CATON • RCATON@INSITEREALTY.COM • 713.339.5336

A PROJECT OF

**EASTGROUP**  
PROPERTIES