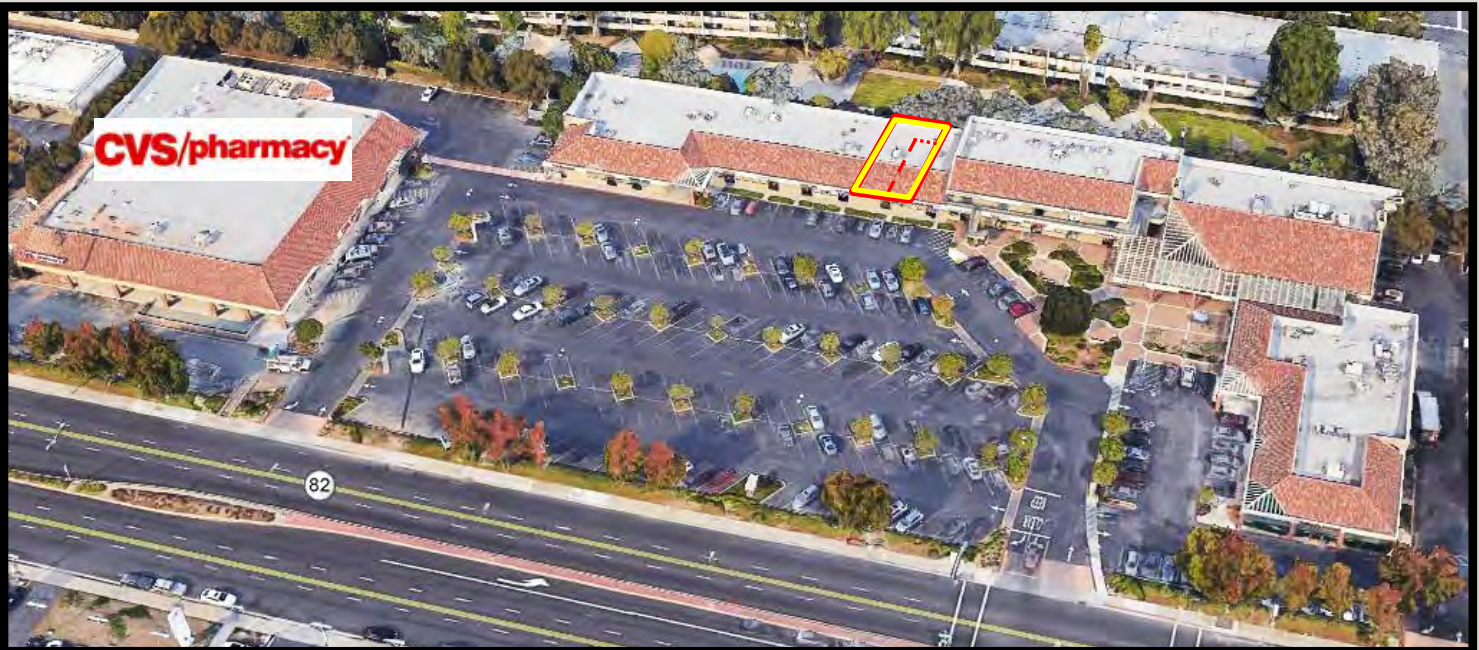




## EL CAMINO REAL CENTER SPACE FOR LEASE In-Line Retail Available



### PROPERTY HIGHLIGHTS:

**CALA CENTER**  
1111  
WEST EL CAMINO REAL  
SUNNYVALE,  
CALIFORNIA

- 1,852± SF, Divisible to 1,026± SF and 826± SF
- Asking \$3.75 PSF, NNN
- NNN's Approx. \$.53
- El Camino Visibility
- High Traffic Area: 53,000 ADT
- Co-Tenants Include CVS/pharmacy, Jersey Mike's, Pizza Hut, Felipe's Produce, Aappa Kadai Indian Restaurant and The UPS Store
- Abundant Parking



### ESTIMATED DEMOGRAPHICS:

	<u>1 MILE</u>	<u>3 MILES</u>	<u>5 MILES</u>
POPULATION:	30,185	201,200	377,959
AVG. HH INCOME:	\$98,028	\$102,686	\$105,240

### FOR MORE INFORMATION CONTACT:

MEACHAM/OPPENHEIMER, INC.  
CORFAC INTERNATIONAL  
8 No. San Pedro St., Suite 300  
San Jose, California 95110  
Tel: 408.378.5900  
Fax: 408.378.5903  
[www.moinc.net](http://www.moinc.net)

**Josh Gispan**  
Lic. #00974978  
[JGispan@moinc.net](mailto:JGispan@moinc.net)  
**(408) 378-5900**

1111 W. EL CAMINO REAL • SUNNYVALE, CALIFORNIA



W. El Camino Real

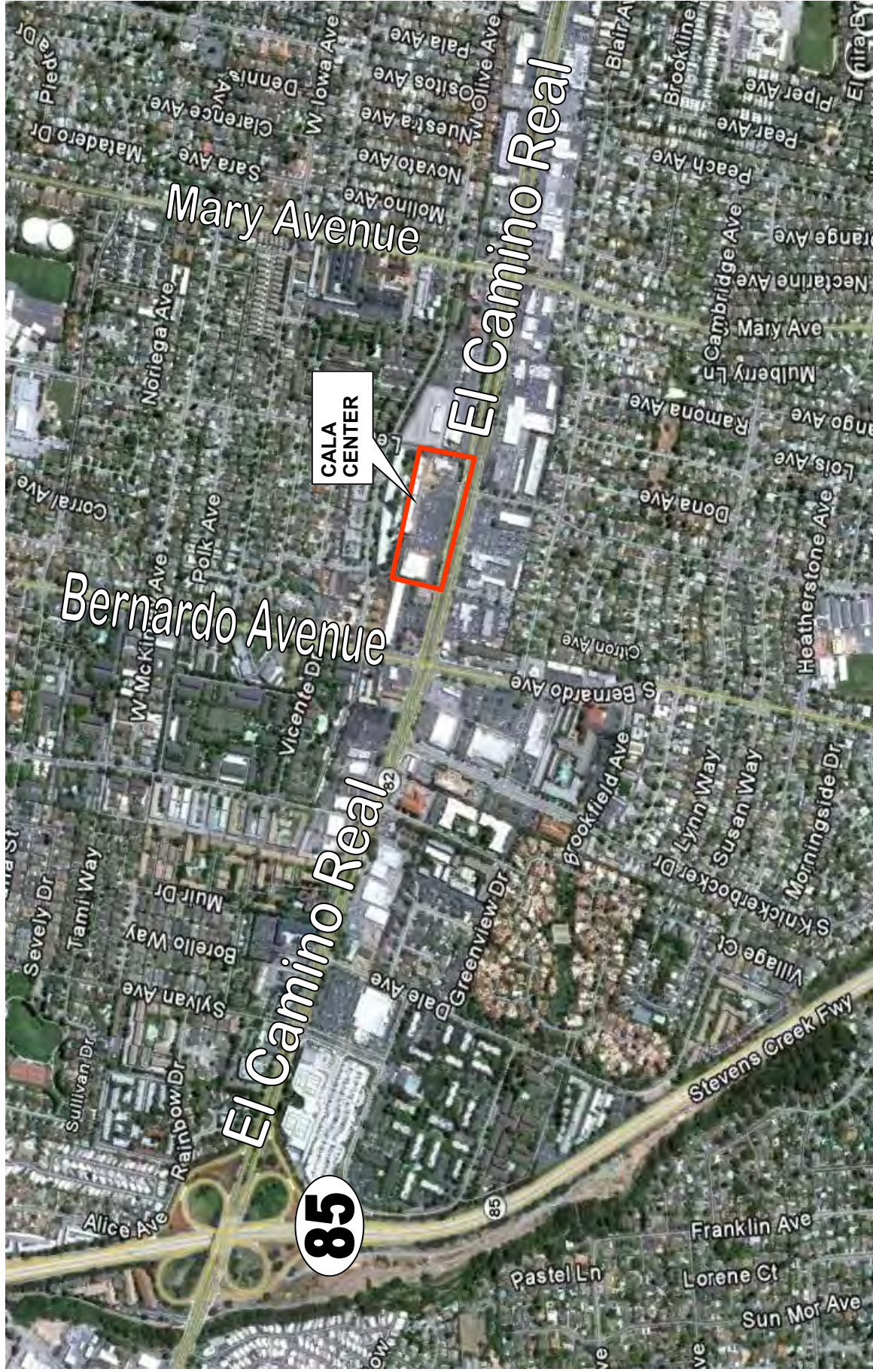
Retail Tenants

Old Siam Restaurant  
Lightbulb/Battery Store  
Ego Frames  
Hair Salon  
Dentist

**Suite 125/127 1,852± SF**

Optometrist  
Acupuncture  
Check Cashing  
Karate Studio  
Jewelry  
Facials/Nails  
UPS Store  
Indian Market  
La Miche Bakery  
Aappa Kadai Indian Rest.  
Felipe Produce

1111 W. EL CAMINO REAL • SUNNYVALE, CALIFORNIA



MEACHAM/OPPENHEIMER, INC.  
CORFAC INTERNATIONAL  
8 No. San Pedro St., Suite 300  
San Jose, California 95110  
Tel: 408.378.5900  
www.moinc.net

Josh Gispan  
Lic. #00974978  
[JGispan@moinc.net](mailto:JGispan@moinc.net)  
(408) 378-5900

The information contained herein has been obtained from sources we deem reliable. We cannot, however, assume responsibility for its accuracy.