

WESTERN CROSSING ONE & TWO

W/NWC MAIN STREET & HWY 287 | FLORENCE, PINAL COUNTY, ARIZONA



LOCATION Property is located west of the northwest corner of Main Street & Highway 287 in Florence, Pinal County, Arizona

SIZE ± 99.41 acres
Western Crossing One - 130 Final Platted Lots
64 - 47' x 115' and 66 - 57' x 115'

Western Crossing Two - Planned for 143 Lots
127 - 47' x 115' and 16 - 57' x 115'

PRICE \$17,500 per acre

ZONING PUD, R1

IMPACT FEES \$11,090

TAXES \$10,406 (2018)

UTILITIES

Power – APS & Electrical District 2
Water – Town of Florence
Sewer – Town of Florence
Gas – Southwest Gas

SCHOOLS

Florence Unified School District
Florence Elementary School
Florence High School

FINAL PLATS

Click here to view [Phase I Final Plat](#)
Click here to view [Phase II Final Plat](#)

COMMENTS Located within the Towne Core Infill Incentive Plan [Click here for more information.](#)

Johnson
Ranch
Estates

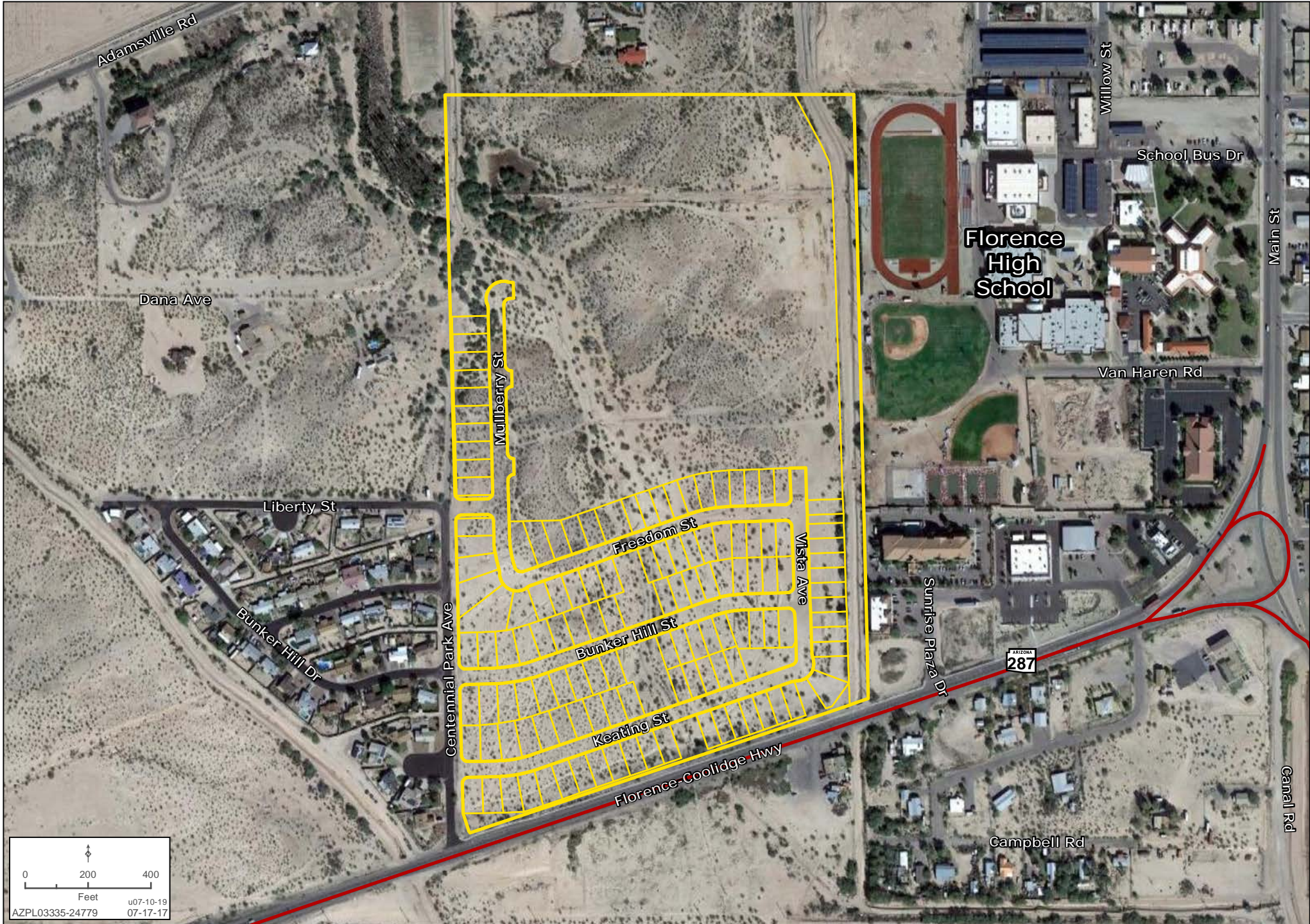
Ben Heglie | bheglie@landadvisors.com Ryan Semro | rsemro@landadvisors.com Bret Rinehart | brinehart@landadvisors.com
4900 North Scottsdale Road, Suite 3000, Scottsdale, Arizona 85251 ph. 480.483.8100 | www.landadvisors.com

The information contained herein is from sources deemed reliable. We have no reason to doubt its accuracy but do not guarantee it. It is the responsibility of the person reviewing this information to independently verify it. This package is subject to change, prior sale or complete withdrawal. AZPL03335 - 7.10.19



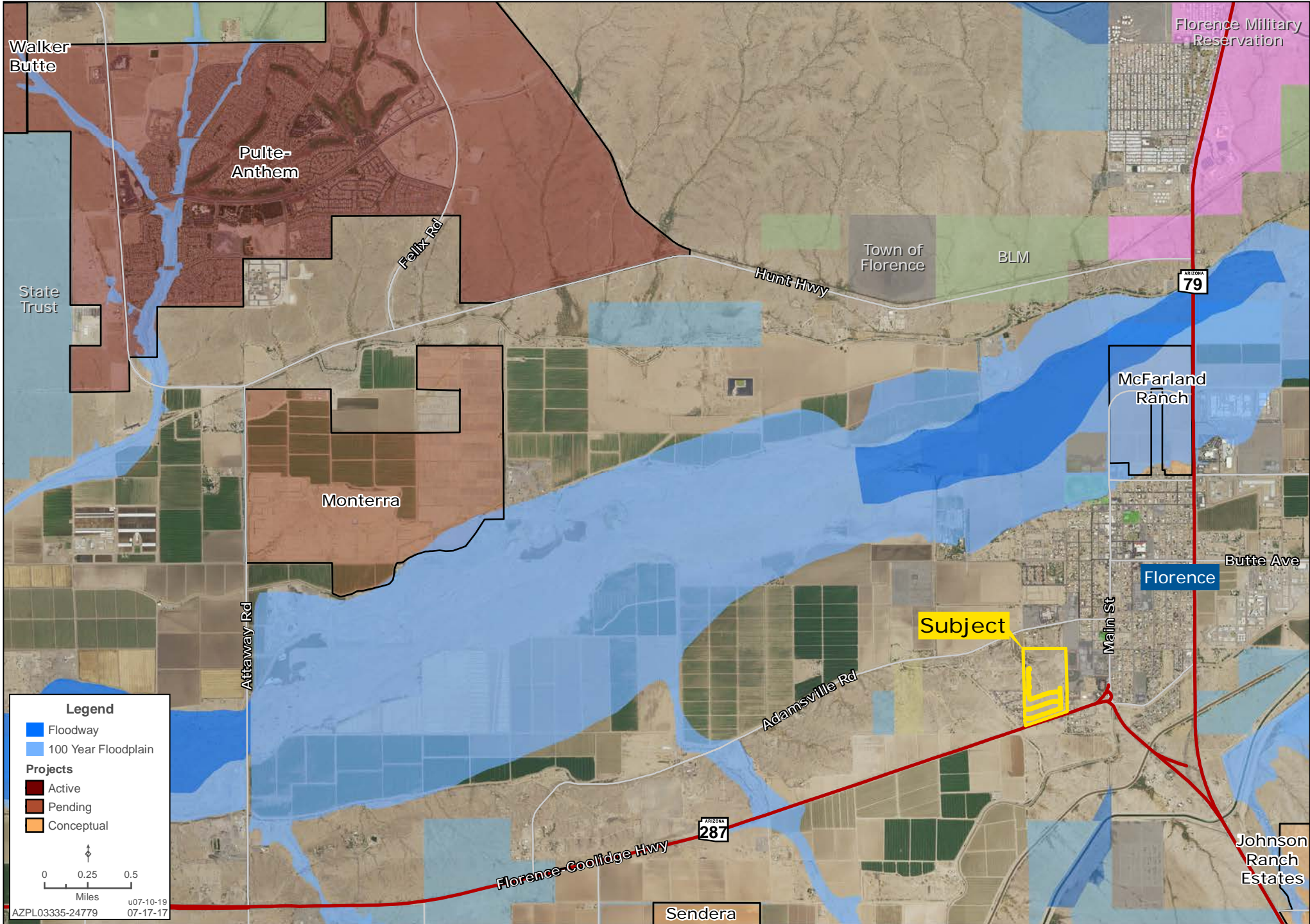
PROPERTY DETAIL MAP

Ben Heglie | Ryan Semro | Bret Rinehart | 480.483.8100 | www.landadvisors.com



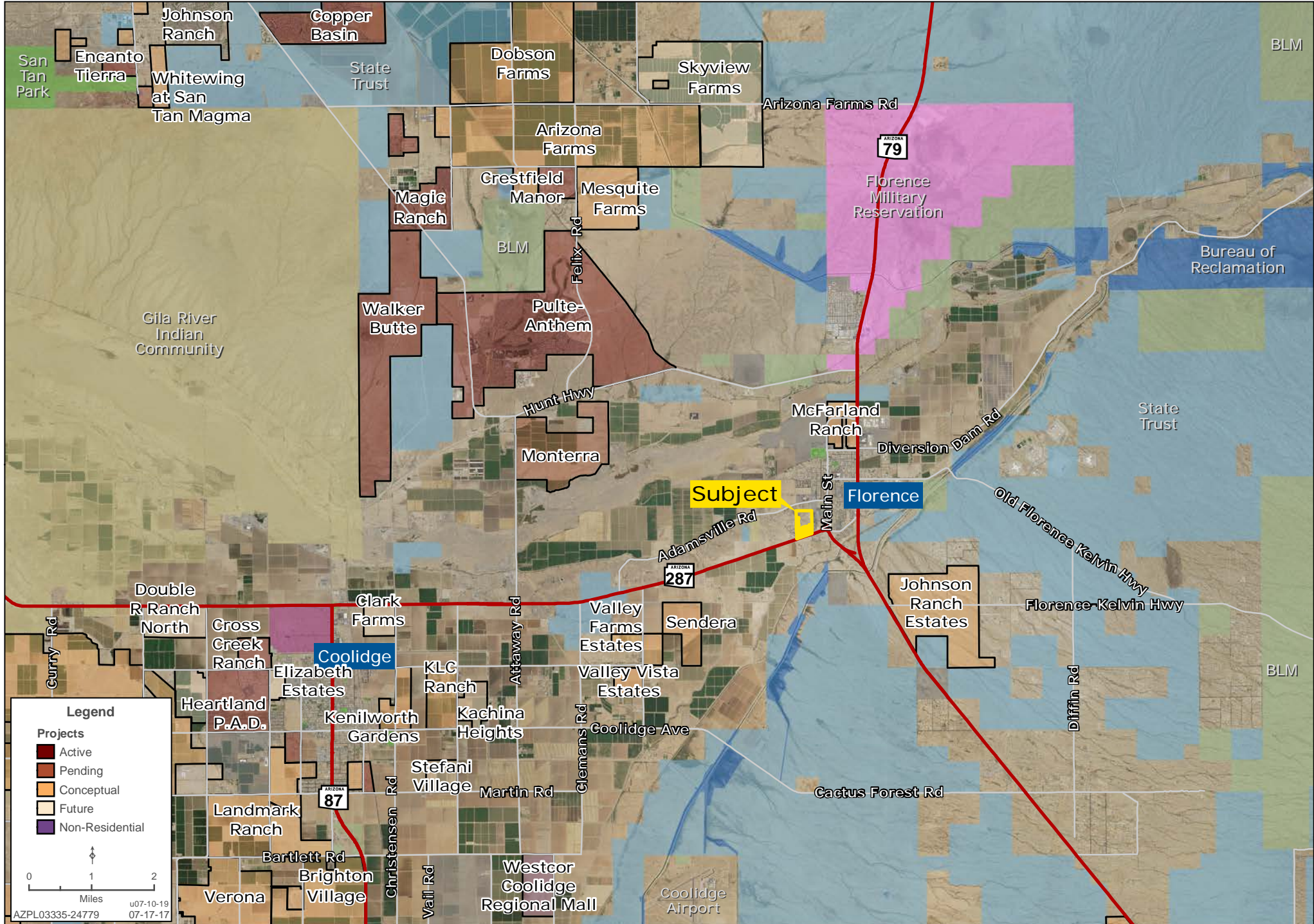
SURROUNDING AREA MAP

Ben Heglie | Ryan Semro | Bret Rinehart | 480.483.8100 | www.landadvisors.com



SURROUNDING DEVELOPMENT MAP

Ben Heglie | Ryan Semro | Bret Rinehart | 480.483.8100 | www.landadvisors.com



REGIONAL MAP

Ben Heglie | Ryan Semro | Bret Rinehart | 480.483.8100 | www.landadvisors.com

