



FORMER TACO BELL FOR LEASE

I-35 & Shawnee Mission Parkway (NEQ)
8800 Shawnee Mission Parkway, Merriam, Kansas



1,974 SF Freestanding Building w/ Drive-Thru

DEMOGRAPHICS

	1 mile	3 miles	5 miles
Estimated Population	7,826	98,891	232,086
Avg. Household Income	\$73,966	\$75,737	\$97,007

- Building located on .66 acres of land
- Great visibility and site identification
- Drive-thru and pylon sign available
- Zoned Commercial
- Up the street from new IKEA furniture
- Shawnee Mission Parkway carries over 38,000 cars per day and 148,000 cars per day on I-35

 [CLICK HERE TO VIEW MORE LISTING INFORMATION](#)

For More Information Contact: *Exclusive Agents*
 DAVID BLOCK | 816.412.7400 | dblock@blockandco.com
 ALEX BLOCK | 816.412.7373 | ablock@blockandco.com



All information furnished regarding property for sale or lease is from sources deemed reliable, but no warranty or representation is made as to the accuracy thereof and the same is subject to errors, omissions, changes of prices, rental or other conditions, prior sale or lease or withdrawal without notice.



FORMER TACO BELL FOR LEASE

I-35 & Shawnee Mission Parkway (NEQ)
8800 Shawnee Mission Parkway, Merriam, Kansas

PHOTOS





FORMER TACO BELL FOR LEASE

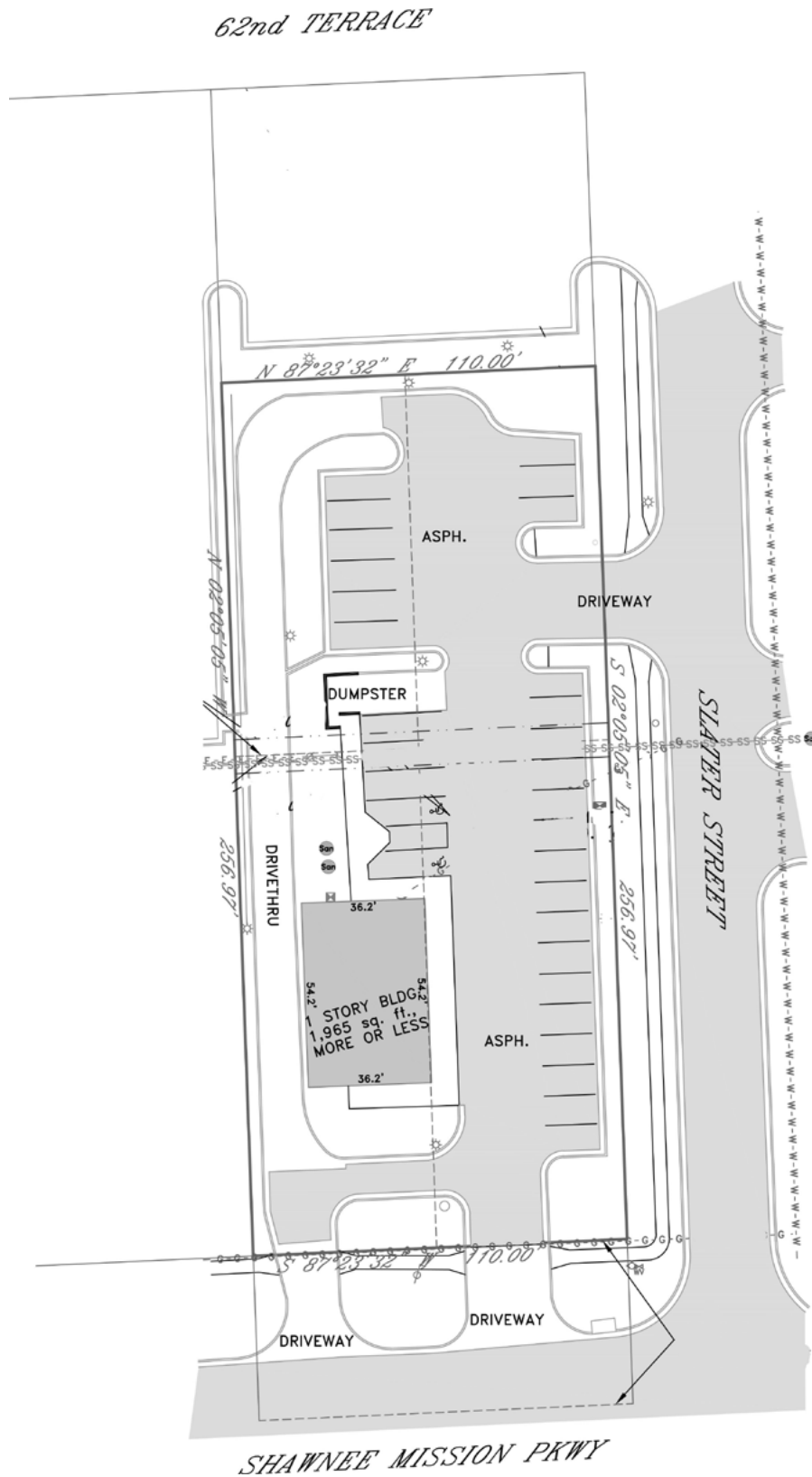
I-35 & Shawnee Mission Parkway (NEQ)
8800 Shawnee Mission Parkway, Merriam, KS

1,974 SF +/-
**FREESTANDING
BUILDING W/ DRIVE-THRU**

DRONE AERIAL PHOTO



SITE PLAN



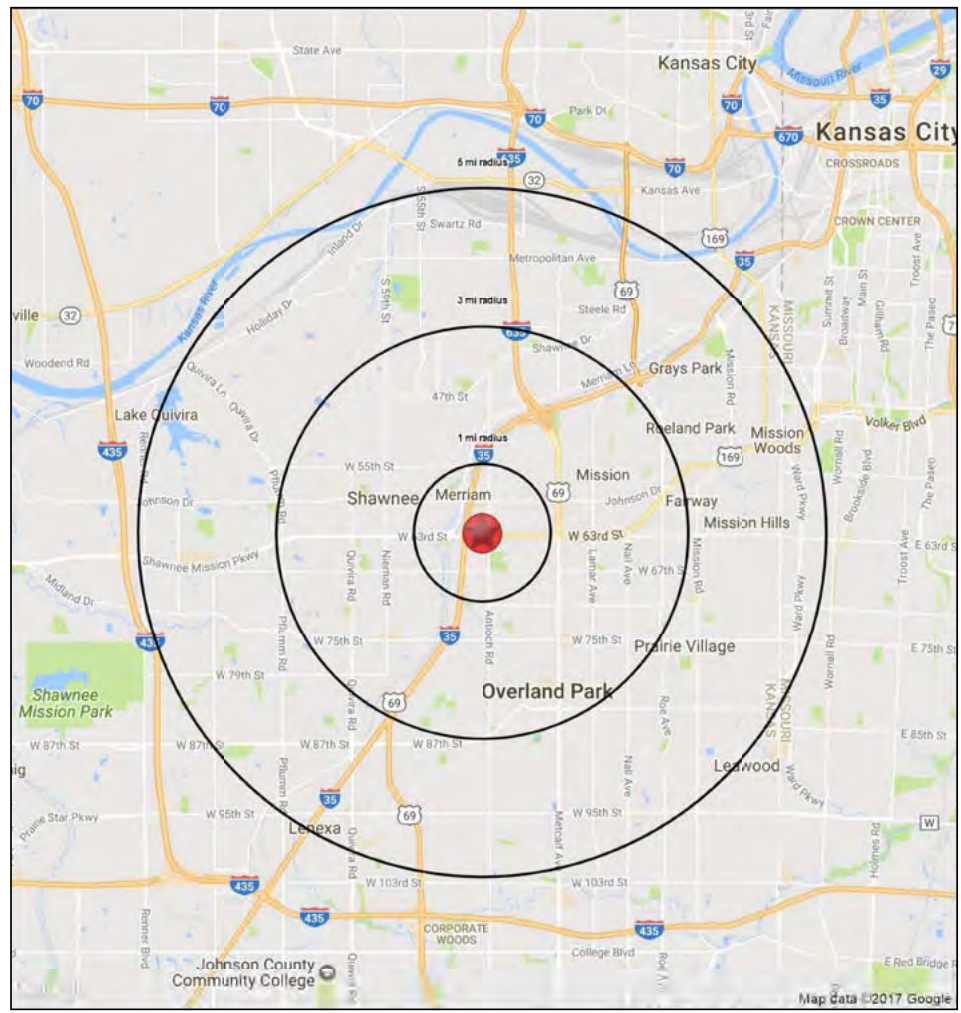
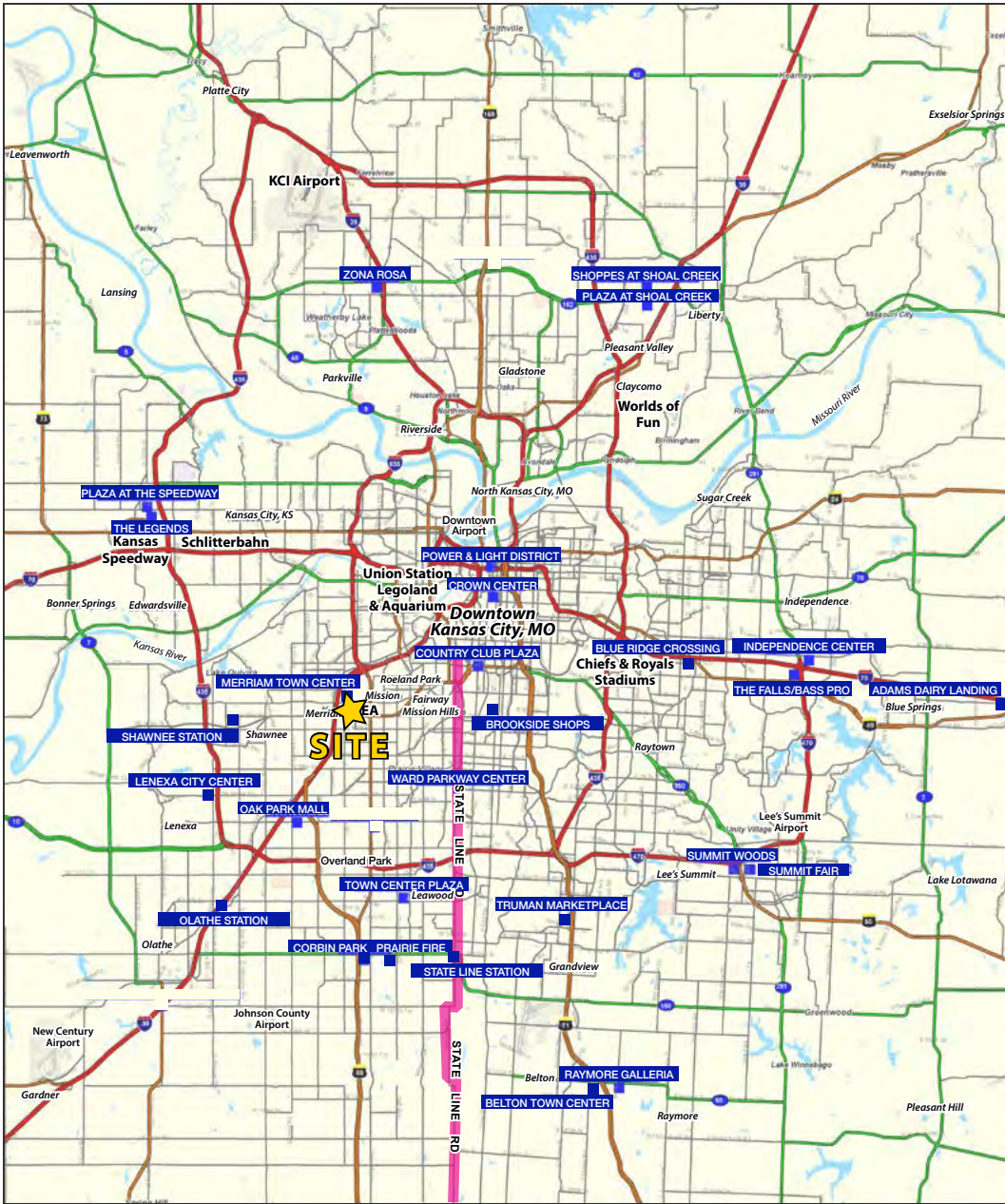


FORMER TACO BELL FOR LEASE

I-35 & Shawnee Mission Parkway (NEQ)

8800 Shawnee Mission Parkway, Merriam, KS

1,974 SF +/-
FREESTANDING
BUILDING W/ DRIVE-THRU





FORMER TACO BELL FOR LEASE

I-35 & Shawnee Mission Parkway (NEQ)

8800 Shawnee Mission Parkway, Merriam, Kansas

8800 Shawnee Mission Pkwy		1 mi radius	3 mi radius	5 mi radius
Merriam, KS 66202				
POPULATION	2018 Estimated Population	7,826	98,891	232,086
	2023 Projected Population	8,295	104,020	242,561
	2010 Census Population	7,655	95,761	224,544
	2000 Census Population	7,792	98,086	228,765
	Projected Annual Growth 2018 to 2023	1.2%	1.0%	0.9%
	Historical Annual Growth 2000 to 2018	-	-	0.1%
	2018 Median Age	38.6	37.3	39.3
HOUSEHOLDS	2018 Estimated Households	3,686	45,049	102,542
	2023 Projected Households	3,924	47,668	107,578
	2010 Census Households	3,510	42,478	96,387
	2000 Census Households	3,494	43,109	96,773
	Projected Annual Growth 2018 to 2023	1.3%	1.2%	1.0%
	Historical Annual Growth 2000 to 2018	0.3%	0.3%	0.3%
RACE AND ETHNICITY	2018 Estimated White	83.6%	80.3%	80.9%
	2018 Estimated Black or African American	5.1%	6.6%	6.4%
	2018 Estimated Asian or Pacific Islander	2.9%	3.6%	3.8%
	2018 Estimated American Indian or Native Alaskan	0.4%	0.5%	0.5%
	2018 Estimated Other Races	8.1%	9.0%	8.5%
	2018 Estimated Hispanic	12.2%	14.0%	13.4%
INCOME	2018 Estimated Average Household Income	\$73,966	\$75,737	\$97,001
	2018 Estimated Median Household Income	\$61,517	\$62,887	\$76,351
	2018 Estimated Per Capita Income	\$35,022	\$34,574	\$42,908
EDUCATION (AGE 25+)	2018 Estimated Elementary (Grade Level 0 to 8)	2.2%	3.4%	2.8%
	2018 Estimated Some High School (Grade Level 9 to 11)	3.8%	4.1%	3.9%
	2018 Estimated High School Graduate	25.1%	21.0%	18.1%
	2018 Estimated Some College	21.2%	22.1%	19.7%
	2018 Estimated Associates Degree Only	9.4%	8.7%	7.8%
	2018 Estimated Bachelors Degree Only	24.7%	26.2%	29.1%
	2018 Estimated Graduate Degree	13.7%	14.5%	18.5%
BUSINESS	2018 Estimated Total Businesses	541	4,917	10,225
	2018 Estimated Total Employees	7,886	65,918	126,480
	2018 Estimated Employee Population per Business	14.6	13.4	12.4
	2018 Estimated Residential Population per Business	14.5	20.1	22.7