



JONES LANG
LASALLE®

Real value in a changing world

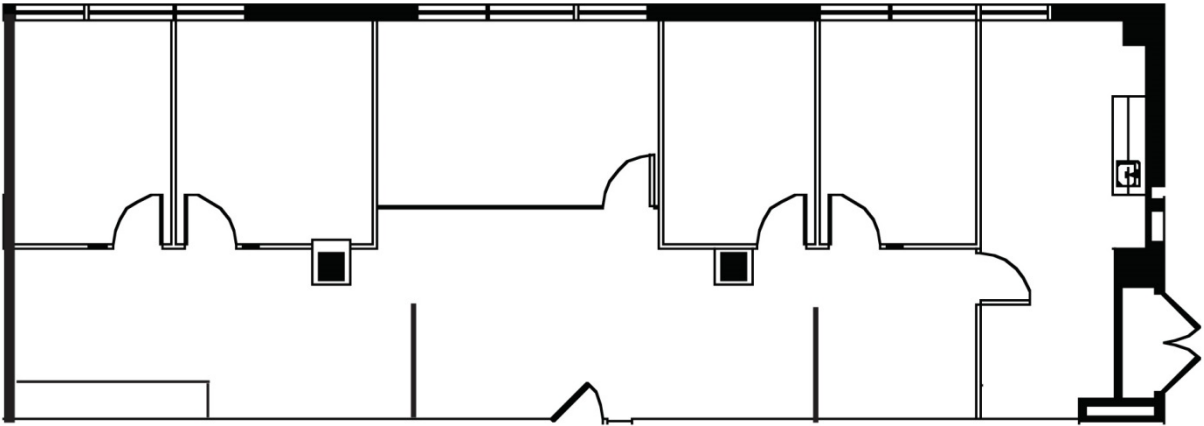
Sublease Available

3900 South Wadsworth Blvd

Lakewood, CO



Floor plan – Suite 370



Sublease highlights

- **Available space:** Suite 370 – 1,787 s.f.
- **Occupancy:** 30-60 days
- **Sublease rate:** Negotiable
- **Term:** Through October 31, 2015
- **Parking:** 5.0 / 1,000

Amenities

- 24/7 building access
- Card key access
- Conferencing facility
- Energy Star Labeled
- Fitness center
- On Site Management
- Signage

**For more information,
please contact:**

Tim Bourdelais
+1 303 390 5203
tim.bourdelais@am.jll.com

Amy Aldridge
+1 303 390 5243
Amy.aldrige@am.jll.com

