



## LOCATION

Building H  
7340 SW Durham Road  
Portland OR 97224

## TOTAL SQ.FT. OFFICE SQ.FT.

10,049 sq.ft.  
5,386 sq.ft.

## DOCK DOORS DRIVE-IN DOORS CLEAR HEIGHT

2  
2  
14'

## FEATURES

End Cap Space  
Walking Distance to Bridgeport Village

## RATE

\$0.65/sq.ft. Shell  
\$0.95/sq.ft. Office  
NNN

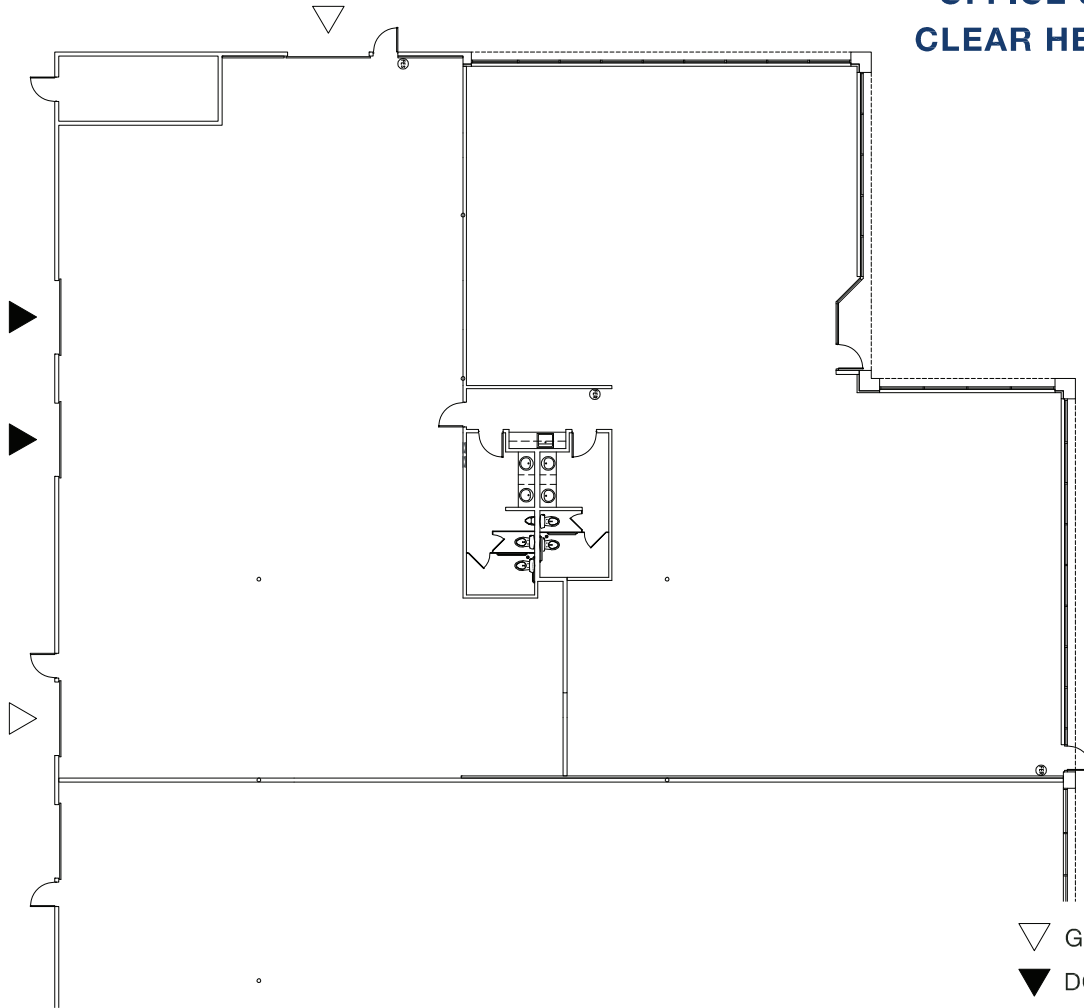
## LEASING CONTACT

Sam Briggs  
samb@pactrust.com  
503-624-6300

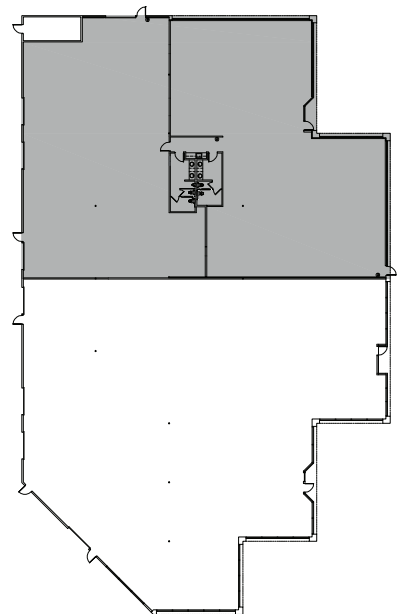
Dave Hicks  
daveh@pactrust.com  
503-624-6300



TOTAL 10,049 SQ FT  
OFFICE 5,386 SQ FT  
CLEAR HEIGHT 14 FT



▽ GRADE ACCESS  
▼ DOCK ACCESS



PACTRUST BUSINESS CENTER  
Portland, OR 97224



## BUILDING PLAN

15350 SW Sequoia Pkwy Suite 300 Portland OR 97224 • 503.624.6300 • [pactrust.com](http://pactrust.com)

*The square footage and rates quoted herein are subject to change. Square footage and rates are finalized with a signed lease agreement.*

