

1219 Assembly STREET

FOR LEASE

LEASE RATE: \$19.00 PSF FULL SERVICE

Desireable Historic Interior Finishes

WALKING DISTANCE TO CBD & VISTA:
±630-2,000 SF of **Boutique Space** for Lease

CONTACT

ROGER WINN, SIOR | Partner | rwinn@trinity-partners.com | 803-567-1455

BRADEN SHOCKLEY | Associate Broker | bshockley@trinity-partners.com | 803-567-1373

**TRINITY
PARTNERS**

1219 Assembly STREET



CBD OFFICE

- 1 Td Bank Building
- 2 Wells Fargo Building
- 3 Barringer Building
- 4 Ameris Bank
- 5 Meridian Building
- 6 First Community Bank
- 7 Palmetto Citizens FCU
- 8 Keenan Complex
- 9 IT-Ology
- 10 Capital Center

RETAIL

- 1 Villa Tronco
- 2 Hendrix
- 3 Lula Drake Wine Parlo
- 4 The Grand
- 5 Good Life Care
- 6 Sandwich Depot
- 7 Main Street Public House
- 8 Drakes Duck In
- 9 Rioz
- 10 Drip Coffee
- 11 East Bay Deli
- 12 Fancy That Bistro
- 13 Greek Boys
- 14 Crepes and Croissants
- 15 Subway
- 16 Camon Sushi
- 17 Starbucks
- 18 Stoners Pizza
- 19 Pita Pit / Indah Coffee / Swanson's Deli
- 20 Cantina 76
- 21 Lunchbox
- 22 Halls Chop House
- 23 Bourbon
- 24 Blue Flour Bakery
- 25 The Whig

GOVERNMENT

- 1 City of Columbia Administration
- 2 City of Columbia Employment
- 3 SC Supreme Court
- 4 Municipal Association of SC
- 5 SC State House and Capitol Complex
- 6 Dennis Building
- 7 Gressette Building
- 8 Wade Hampton Building
- 9 Calhoun Building
- 10 SC Budget and Control Board
- 11 Blatt Building
- 12 Brown Building

HOTEL

- 1 Hotel Trundle
- 2 Main Street Lofts
- 3 Marriot
- 4 The Hub
- 5 Sheraton

THE VISTA

RETAIL

- | | | |
|--------------------------------|--------------------|----------------------|
| 1 M Vista | 12 The Casual Pint | 23 Sure Fire Taco |
| 2 Wild Wing Café | 13 Sakitumi | 24 Nonnahs |
| 3 Carolina Ale House | 14 COA | 25 929 Kitchen |
| 4 Twisted Spur | 15 Jasons Deli | 26 Panera |
| 5 Small Sugar | 16 Poke Bros | 27 Motor Supply Co |
| 6 Tsunami | 17 Smoothie King | 28 Kaminsky's |
| 7 Vista Keys | 18 Starbucks | 29 Menkoi Ramen |
| 8 Grill Marks | 19 Liberty Taproom | 30 Pearlz Oyster Bar |
| 9 Jimmy Johns | 20 Blue Marlin | 31 Five Guys |
| 10 Ristorante Divino | 21 Longhorn | 32 Flying Saucer |
| 11 Old Chicago Pizza & Taproom | 22 Hickory Tavern | 33 Monterey's |

HOTEL

- 1 Aloft Columbia Downtown
- 2 Hyatt Place Columbia
- 3 Hampton Inn by Hilton
- 4 Hilton Columbia Center

OFFICE

- 1 Regions Bank

CONTACT

ROGER WINN, SIOR | Partner | rwinn@trinity-partners.com | 803-567-1455

BRADEN SHOCKLEY | Associate Broker | bshockley@trinity-partners.com | 803-567-1373



1219 Assembly STREET

FOR LEASE

LEASE RATE: \$19.00 PSF FULL SERVICE



3-STORY HISTORIC BUILDING LOCATED ON ASSEMBLY STREET WITHIN CLOSE PROXIMITY TO GERVAIS STREET

CONTACT

ROGER WINN, SIOR | Partner | rwinn@trinity-partners.com | 803-567-1455

BRADEN SHOCKLEY | Associate Broker | bshockley@trinity-partners.com | 803-567-1373

TRINITY
PARTNERS

1219 Assembly STREET

FOR LEASE

LEASE RATE: \$19.00 PSF FULL SERVICE



CONTACT

ROGER WINN, SIOR | Partner | rwinn@trinity-partners.com | 803-567-1455

BRADEN SHOCKLEY | Associate Broker | bshockley@trinity-partners.com | 803-567-1373

**TRINITY
PARTNERS**

FLOOR PLANS

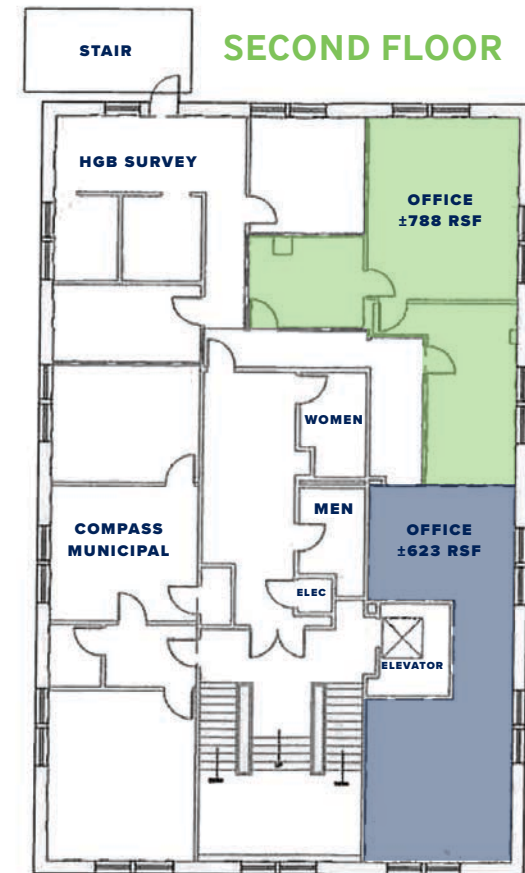
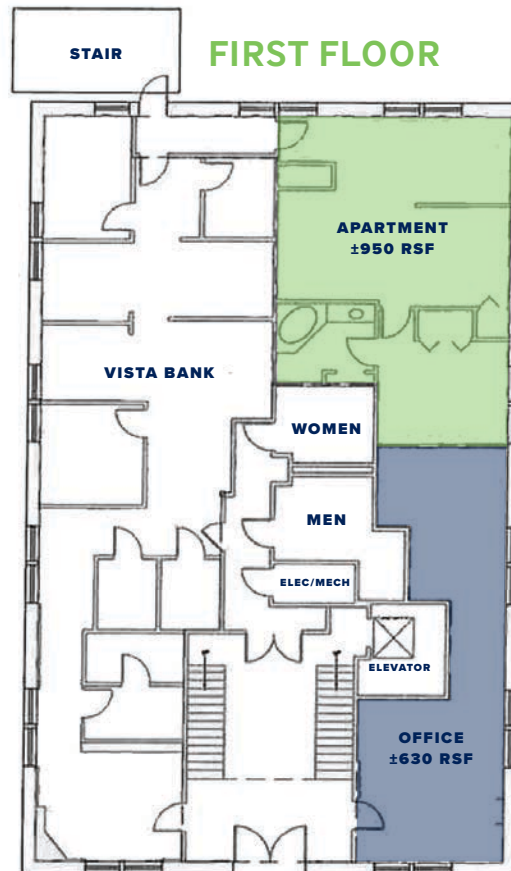
AVAILABLE SUITES

FIRST FLOOR

- ±950 RSF (APARTMENT)
- ±630 RSF (OFFICE)

SECOND FLOOR

- ±788 RSF (OFFICE)
- ±623 RSF (OFFICE)
- TOTAL CONTIGUOUS: ±1,411 RSF (OFFICE)



CONTACT

ROGER WINN, SIOR | Partner | rwinn@trinity-partners.com | 803-567-1455

BRADEN SHOCKLEY | Associate Broker | bshockley@trinity-partners.com | 803-567-1373