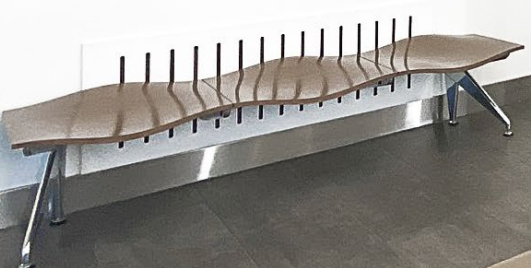
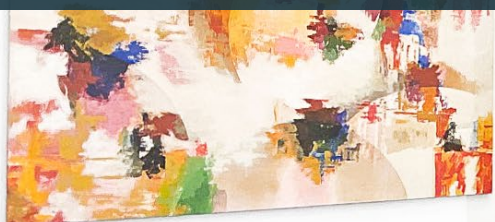


# 158W 27ST



FOR LEASE | 19,322 RSF

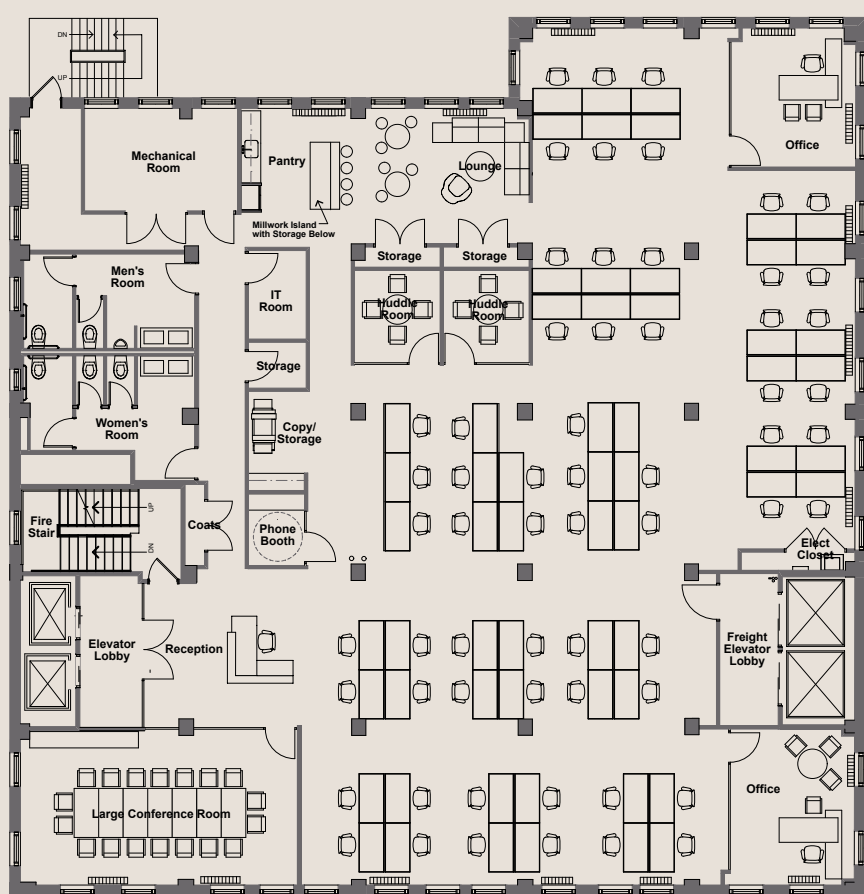
**AVAILABILITY:**

Floor	Size	Occupancy
Entire 4th	9,661 RSF	Immediate (Pre-Built)
Entire 3rd	9,661 RSF	Immediate (Pre-Built)

**PROPERTY FEATURES :**

- Brand New Lobby
- Brand New Elevator Cabs
- High-End Open Plan Pre-Builts
- Glass-Front Office & Conference Rooms
- Hardwood Floors
- High Ceilings
- Efficient Side-Core Floorplates

**3RD FLOOR PRE-BUILT PLAN**



West 27th Street

**ACCOMMODATIONS ACHIEVED**

- Elevator Lobby
- Reception
- (1) Large Conference Room (seats 18)
- (2) Huddle Rooms (seats 4)
- (1) Pantry/Lounge
- (2) Private Offices
- (62) Benching Stations
- (1) Copy/Alcove
- (1) Phone Booth
- (1) IT Room
- (1) Coat Closet
- (2) Storage Closets
- (1) Storage Room
- Freight Elevator Lobby
- Men's Room
- Women's Room
- Mechanical Room



FOR MORE INFORMATION, PLEASE CONTACT:

**CAROLINE COLLINS**  
212 318 9745  
caroline.collins@cushwake.com

**GREG KUHLMAN**  
212 841 7959  
greg.kuhlman@cushwake.com

**ETHAN SILVERSTEIN**  
212 698 2694  
ethan.silverstein@cushwake.com

