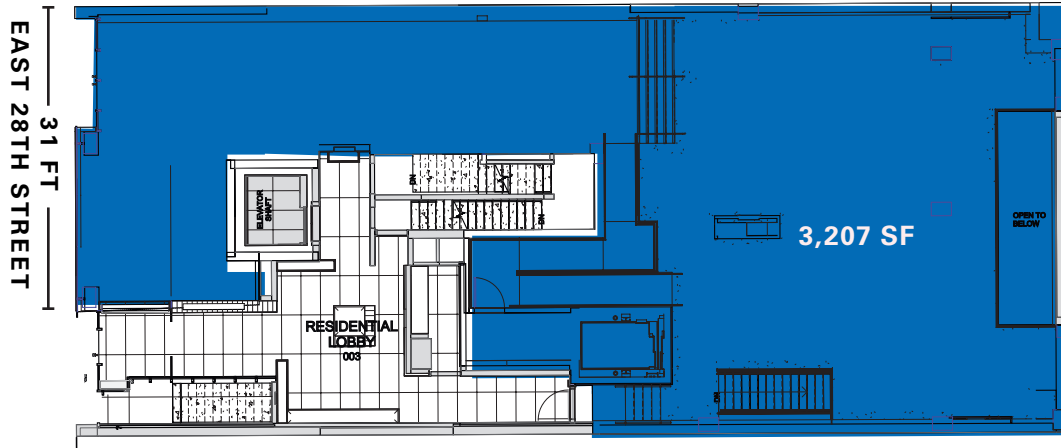

128 East 28th Street

MIDTOWN SOUTH
NEW YORK, NY



SPACE DETAILS

Ground Floor



Location

South block between Lexington Avenue and Park Avenue South

Approximate Size

Ground Floor	3,207 SF
Lower Floor	1,604 SF
Total	4,811 SF

Term

Long Term

Possession

Q2 2022

Site Status

New Construction

Frontage

31 FT on East 28th Street

Neighbors

Barry's Bootcamp, Equinox, Gregory's Coffee, CAVA, Chase, Hillstone, Dos Caminos, Flywheel, Blue Smoke, Ruby's Cafe and Whole Foods Market

Comments

Located at the base of a new eight-story, 11-unit ground-up development in Midtown South

Usable Lower Level with elevator in place

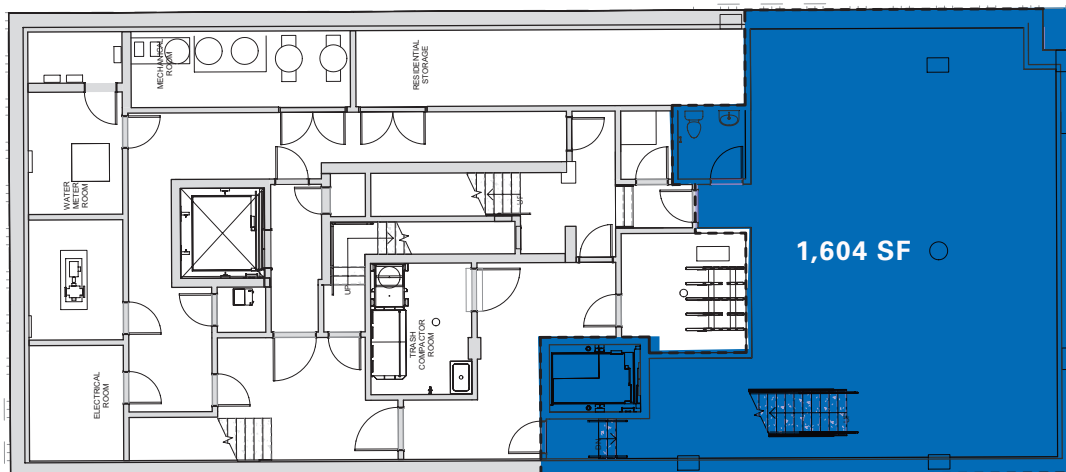
Located steps from the subway station with over 9,500,000 annual riders

Fully vented space

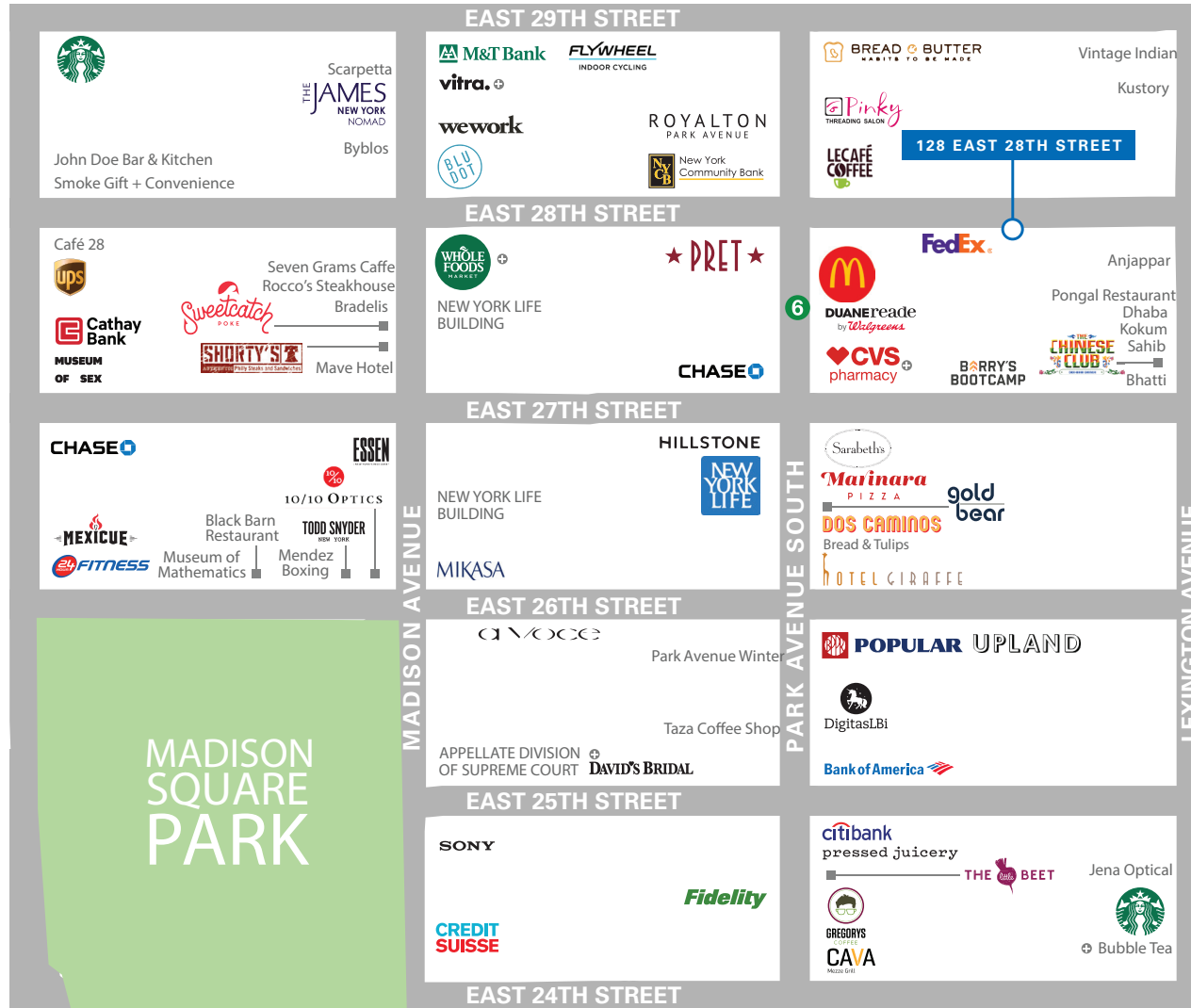
Close proximity to Madison Square Park

Two skylights in place, abundant natural light on both the Ground Floor and Lower Level

Lower Floor



AREA RETAIL



CONTACT

Ross Kaplan
 t 212-850-5418
 ross.kaplan@nmrk.com

William Chaplin
 t 212-351-9352
 william.chaplin@nmrk.com
 nmrk.com