



RETAIL IS NOT PERMITTED HERE. USE MUST COMPLY WITH M1-5B ZONING

AT THE INTERSECTION OF
CROSBY & HOWARD

29 HOWARD STREET

Ground Level.....1,944 SF
Lower Level.....1,820 SF
Frontage.....Approximately 18'
Ceiling Heights.....14' (Ground), 10' (Lower)
Possession.....May 1, 2019
Asking Rent.....Please Inquire

SPACE FEATURES

- 2 attractive finished levels for custom furniture or wholesale uses (no retail permitted; must comply with M1-5B zoning)
- Strong fashion and home design neighbors
- A few doors down from new boutique hotel, 11 Howard, and within steps of NoMo Soho, and Crosby Street Hotel
- Skylight located on ground level and windows in back of both levels

NEIGHBORS

- Opening Ceremony
- Rick Owens
- Industry West
- Reformation
- Retrosuperfuture
- R13 Denim
- BDDW
- Le Coucou
- Henrybuilt
- Saturdays
- Bonobos
- Smile To Go





STREET **BROADWAY** **BROADWAY** **BROADWAY** **STREET**

BROOME STREET

- *Madsenell*
- **J.CREW**
- **TOPSHOP**
- CITIBANK
- **Timberland**
- **ALDO**
- LE YORK SPA
- DEVACHAN SPA
- GHT MATTRESS
- JEAN SHOP NYC
- VINTAGE BLACK LABEL
- **BONOBOS**
- GALERIE
- MIANSAI
- A-TO SALON
- FELLOW BARBER
- MONSTER CYCLE
- **SATURDAYS** SURF NYC

CROSBY STREET

LAFAYETTE STREET

D STREET **GRAND STREET**

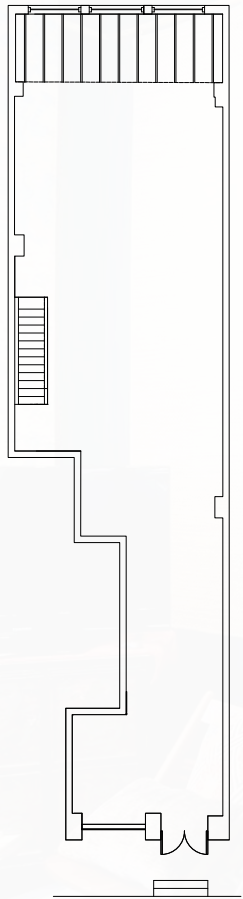
- *Stylo*
- SAGA SHOES
- MYSTIQUE
- **Michael Kors**
- VALLEY NATIONAL
- AQUAMAR
- **NECESSARY CLOTHING**
- **Foot Locker**
- *Champion*
- *Le Botaniste*
- **PARACHUTE**
- **LAICALE**
- *Reed Owens*
- *R. 13*
- FUEGUA 1833
- **THINKSPACE** PLASTICS
- MIMI SO
- **PAINT BOX**
- **uma** (Repeat Occasions)
- **NOMO SOHO**
- **BDDW** FIVE POINTS ACADEMY
- DE VERA
- *SMILE TO GO*
- M. CROW
- **BLICK** art materials
- HAMPTON CHUINNEY
- CARRET LIGHT CALIFORNIA OPTICAL
- THE SHIP

HOWARD STREET

- **B&A**
- **OMG**
- **PROPEL FOOTWEAR**
- **OPENING CEREMONY**
- **SARAO**
- **29 HOWARD**
- MICHELE VARIAN
- SLEEPY JONES
- **REFORMATION**
- **RETROSUPERFUTURE**
- *Le Cou Cou*
- 11 HOWARD HOTEL

CANAL STREET

• **Glossier.**



GROUND LEVEL FLOOR PLAN



29 HOWARD STREET

For more information on 29 Howard Street, please contact:

Christopher Owles
212.604.9002 chris@sinvin.com

Sarah Shannon
646.673.8780 sarah@sinvin.com


COMMERCIAL REAL ESTATE & ADVISORY