



2285 NE Dixie Hwy, Jensen Beach, FL 34957

# INVESTMENT / INCOME PRODUCING FOR SALE

## 2 ACRES LAND / 3 BUILDINGS

ALSO AVAILABLE FOR LEASE \$18,500 Monthly



- **Building 1:**  
2,725 sqft / 9 Rooms
- **Building 2:**  
2,725 sqft / 9 Rooms
- **Building 3:**  
7,200 sqft / Restaurant Bar / Also available for Lease
- Close to the beach / 60 Parking Spaces
- Next to Indian Riverside Park & Martin County Parks (Baseball fields, tennis courts, & children's park)
- **TAX ID:** 273741-000-000-002301  
273741-000-000-002203

**+/- 12,650 SQFT**

**\$ 3,754,000**



**JOE PELAYO, CCIM, SIOR**  
TREC@JOEPELAYO.COM  
WWW.TRECFL.COM  
**954.224.8773**

**TREC** Total Real Estate  
Consultants Inc.  
www.trecfl.com

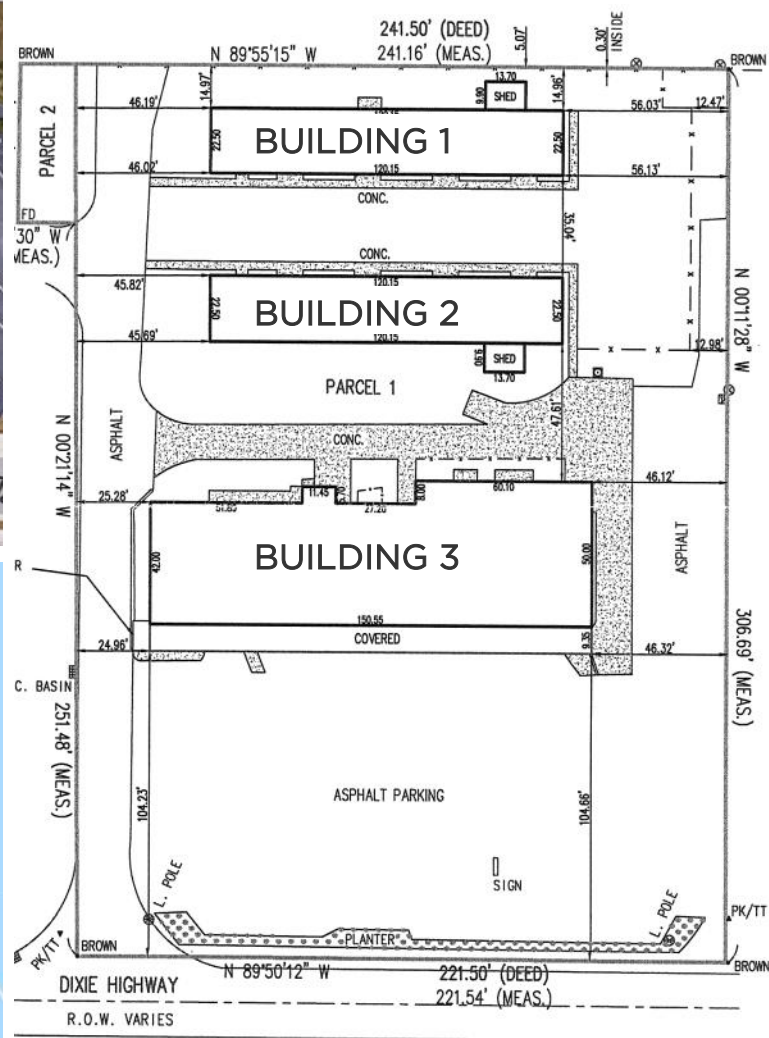
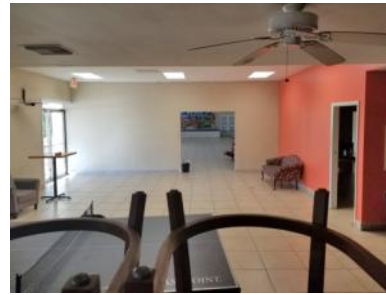
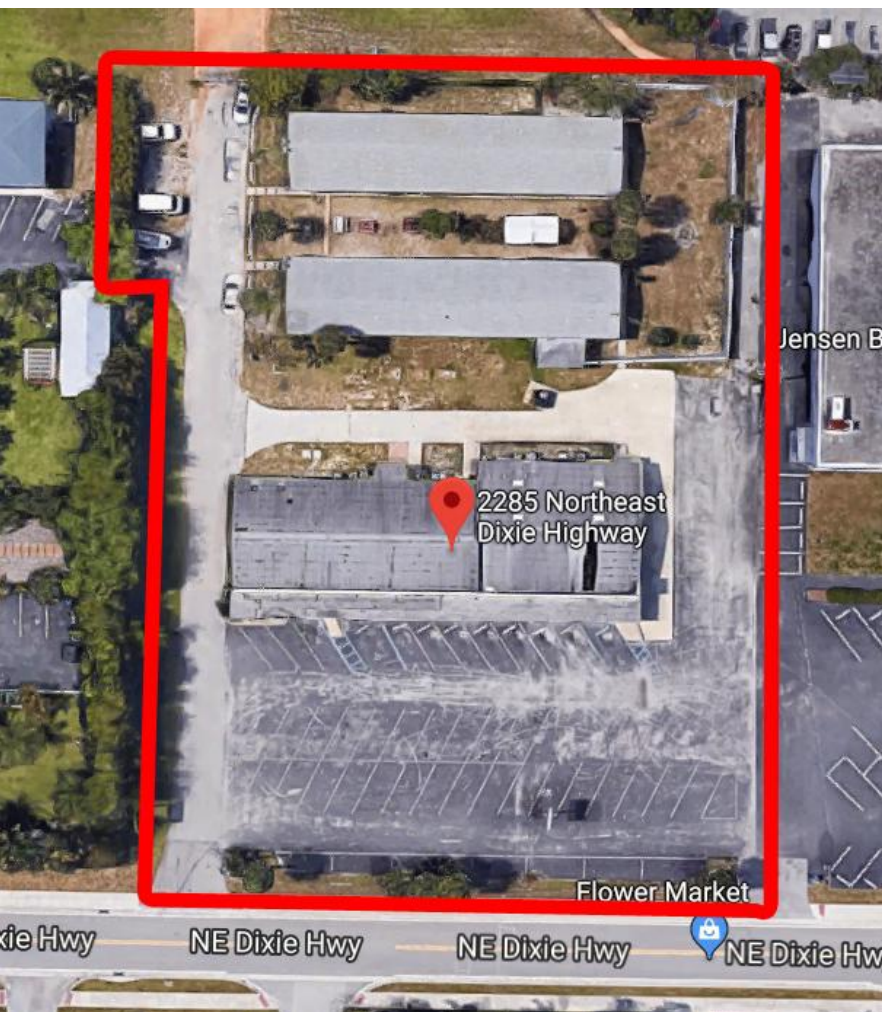
CoStar  
**POWER BROKER™ AWARD**  
Top Firm & Agent  
Ranked on sales & leasing transactions

NOTE: This offering subject to errors, omissions, prior sales or withdrawal without notice





2285 NE Dixie Hwy,  
Jensen Beach, FL 34957



**JOE PELAYO, CCIM, SIOR**  
TREC@JOEPELAYO.COM  
WWW.TRECFL.COM  
954.224.8773

**TREC** Total Real Estate  
Consultants Inc.  
www.trecfl.com

**CCIM** Certified  
Commercial  
Investment  
Member

**SIOR**  
SOCIETY OF INDUSTRIAL & OFFICE REALTORS

NOTE: This offering subject to errors, omissions, prior sales or withdrawal without notice