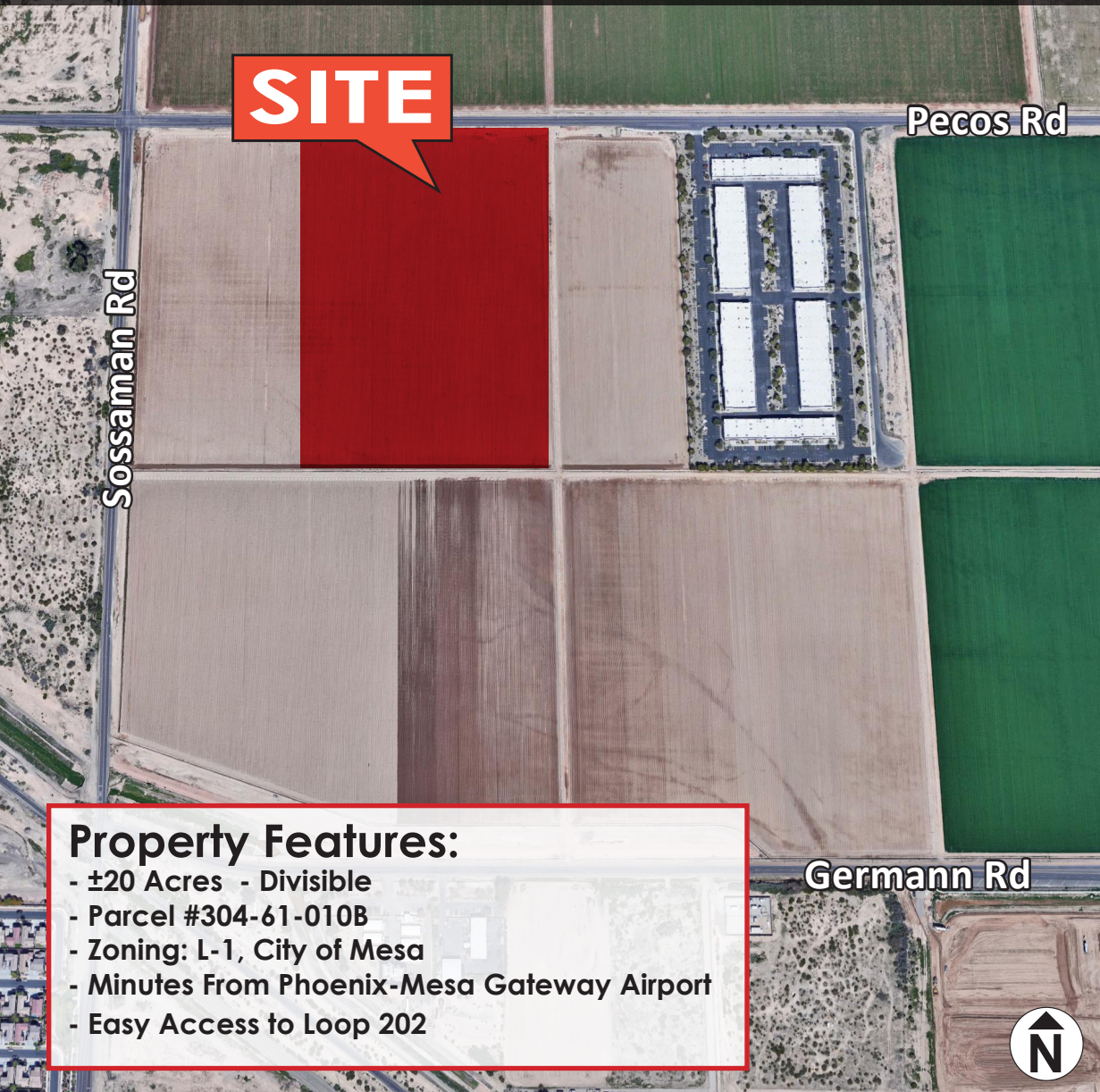


# Land Available For Sale

SEC of S. Sossaman Road & E. Pecos Road  
Mesa, Arizona



**SITE**

Sossaman Rd

Pecos Rd

Germann Rd

## Property Features:

- ±20 Acres - Divisible
- Parcel #304-61-010B
- Zoning: L-1, City of Mesa
- Minutes From Phoenix-Mesa Gateway Airport
- Easy Access to Loop 202



**SITE**

Sossaman Rd

Pecos Rd

Germann Rd

E Rittenhouse Rd

ASU Polytechnic Campus  
Arizona State University



PhxMesa Gateway Airport

## For Additional Information:

Eric Jones  
d: 480.966.8671  
m: 602.291.9400  
ejones@cpiaz.com

Leroy Breinholt  
d: 480.966.6593  
m: 602.377.4687  
lbreinholt@cpiaz.com



**COMMERCIAL PROPERTIES INC.**

Locally Owned. Globally Connected. CFR PAC International

TEMPE: 2323 W. University Drive, Tempe, AZ 85281 | 480.966.2301  
SCOTTSDALE: 8777 N. Gainey Center Dr., Suite 245, Scottsdale, AZ 85258 | www.cpiaz.com

The information contained herein has been obtained from various sources. We have no reason to doubt its accuracy; however, J & J Commercial Properties, Inc. has not verified such information and makes no guarantee, warranty or representation about such information. The prospective buyer or lessee should independently verify all dimensions, specifications, floor plans, and all information prior to the lease or purchase of the property. All offerings are subject to prior sale, lease, or withdrawal from the market without prior notice.