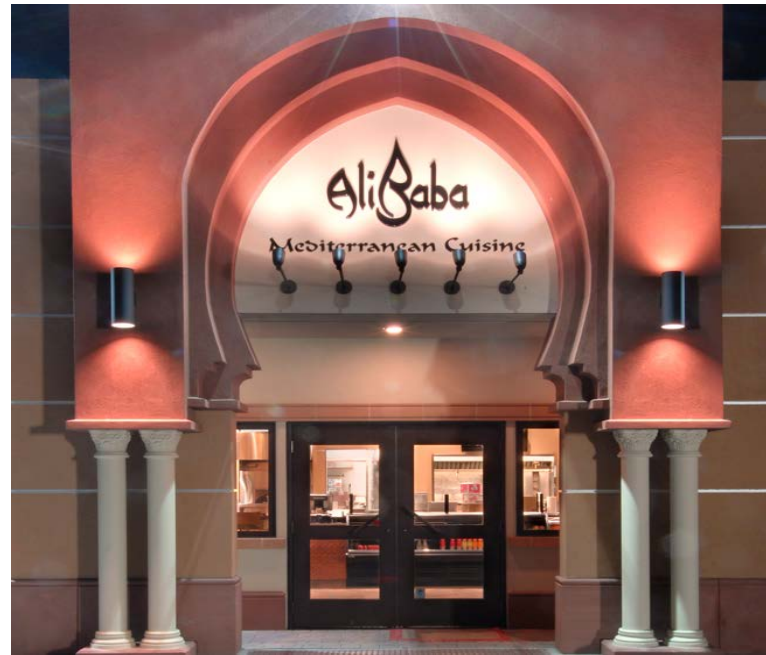




# 1429 SAN MATEO AVE

South San Francisco, CA 94080

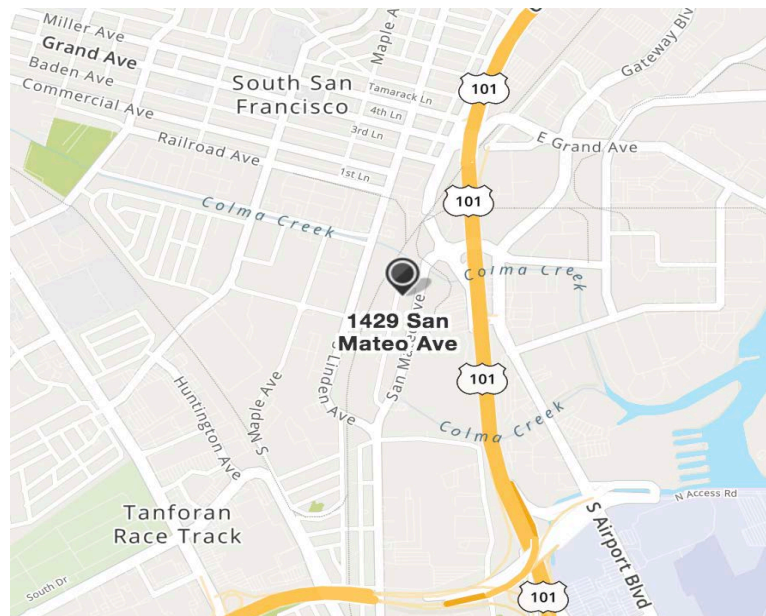
# FOR LEASE



## PROPERTY HIGHLIGHTS

Lease Rate: **\$1.50/PSF IG**

- Approximately ± 5,000 SF Restaurant/Kitchen Space in South San Francisco
- Property Can Also Be Converted into Warehouse Space
- Heavy Power
- Ample Parking
- Mixed Industrial Zoning
- Located near I-101, El Camino Real Road, Caltrain Station, and Downtown Businesses



### SAM STAPLETON

Commercial Real Estate Advisor  
 DRE# 01909929  
 M: (415) 846-7020  
 D: (650) 343-5729  
 E: sstapleton@cbcburlingame.com



**COLDWELL  
 BANKER  
 COMMERCIAL**

WESTBAY REAL ESTATE GROUP

COLDWELL BANKER COMMERCIAL WESTBAY REAL ESTATE GROUP 1575 Bayshore Highway, Suite 100, Burlingame, CA 94010 650.344.4300

©2019 Coldwell Banker Real Estate LLC, dba Coldwell Banker Commercial Westbay Real Estate Group. All rights reserved. Coldwell Banker Commercial® and the Coldwell Banker Commercial logo are registered service marks owned by Coldwell Banker Real Estate LLC. Coldwell Banker Real Estate LLC, dba Coldwell Banker Commercial Affiliates fully supports the principles of the Fair Housing Act and the Equal Opportunity Act. Each office is independently owned and operated. The information provided is deemed reliable, but it is not guaranteed to be accurate or complete, and it should not be relied upon as such. This information should be independently verified before any person enters into a transaction based upon it.





# 1429 SAN MATEO AVE

South San Francisco, CA 94080

# FOR LEASE



COLDWELL BANKER COMMERCIAL WESTBAY REAL ESTATE GROUP 1575 Bayshore Highway, Suite 100, Burlingame, CA 94010 650.344.4300

©2019 Coldwell Banker Real Estate LLC, dba Coldwell Banker Commercial Westbay Real Estate Group. All rights reserved. Coldwell Banker Commercial® and the Coldwell Banker Commercial logo are registered service marks owned by Coldwell Banker Real Estate LLC. Coldwell Banker Real Estate LLC, dba Coldwell Banker Commercial Affiliates fully supports the principles of the Fair Housing Act and the Equal Opportunity Act. Each office is independently owned and operated. The information provided is deemed reliable, but it is not guaranteed to be accurate or complete, and it should not be relied upon as such. This information should be independently verified before any person enters into a transaction based upon it.