

For Lease
1,741 SF Office Space
in Historic LoDo



2231 Larimer Street

Denver, Colorado 80205

Property Overview

- 7 private offices on 2nd floor with private entrance
- Centrally located on historic Larimer Street near numerous restaurants and bars
- Short distance to Union Station and Coors Field
- WalkScore of 95, Bike Score of 92, Transit Score of 83
- Great access to Broadway & I-25

Lease Rate: \$12.00/SF NNN

NO WARRANTY OR REPRESENTATION, EXPRESS OR IMPLIED, IS MADE AS TO THE ACCURACY OF THE INFORMATION CONTAINED HEREIN, AND THE SAME IS SUBMITTED SUBJECT TO ERRORS, OMISSIONS, CHANGE OF PRICE, RENTAL OR OTHER CONDITIONS, PRIOR SALE, LEASE OR FINANCING, OR WITHDRAWAL WITHOUT NOTICE, AND OF ANY SPECIAL LISTING CONDITIONS IMPOSED BY OUR PRINCIPALS NO WARRANTIES OR REPRESENTATIONS ARE MADE AS TO THE CONDITION OF THE PROPERTY OR ANY HAZARDS CONTAINED THEREIN ARE ANY TO BE IMPLIED.



Property Facts

Available SF:	1,741 SF
Building SF:	5,201 SF
Year Built / Renov.:	1888

For more information:

Kiley Crews

720 881 7542

kcrews@shamesmakovsky.com

1400 Glenarm Place, Suite 100

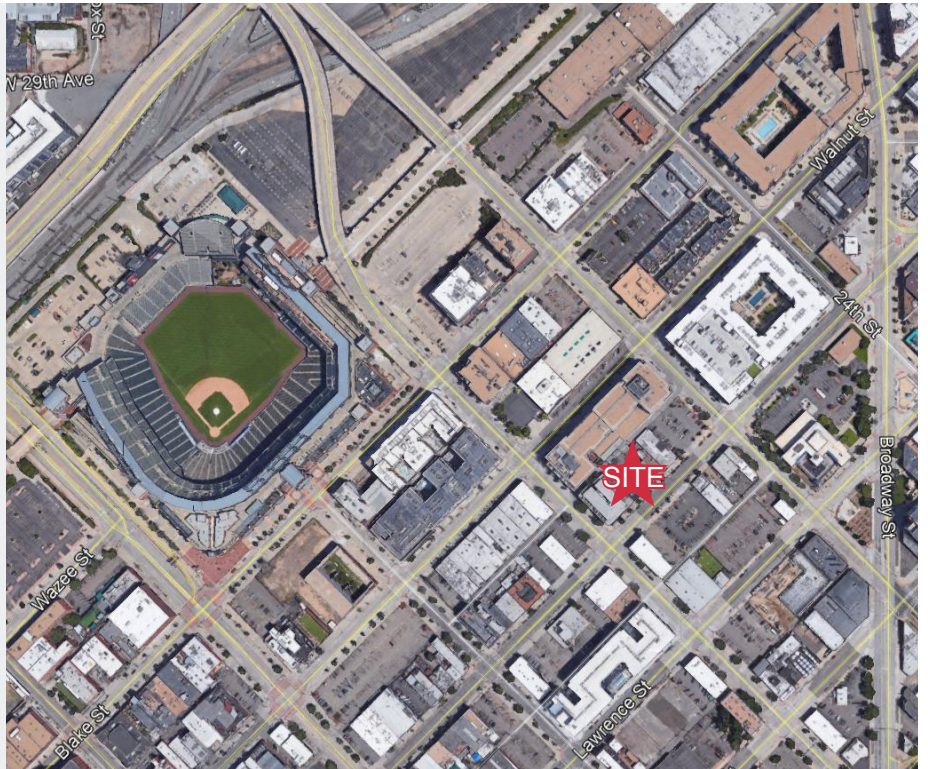
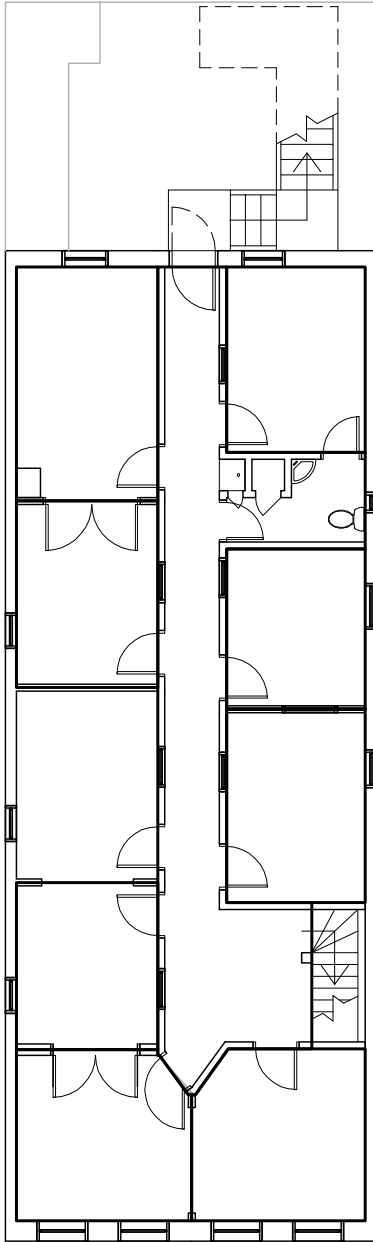
Denver, CO 80202

303 534 5005

naishamesmakovsky.com

Office For Lease

2231 Larimer St.
Denver, Colorado



For more information:

Kiley Crews

720 881 7542

kcrews@shamesmakovsky.com

NAIShames Makovsky

1400 Glenarm Place, Suite 100

Denver, CO 80202

303 534 5005

naishamesmakovsky.com