

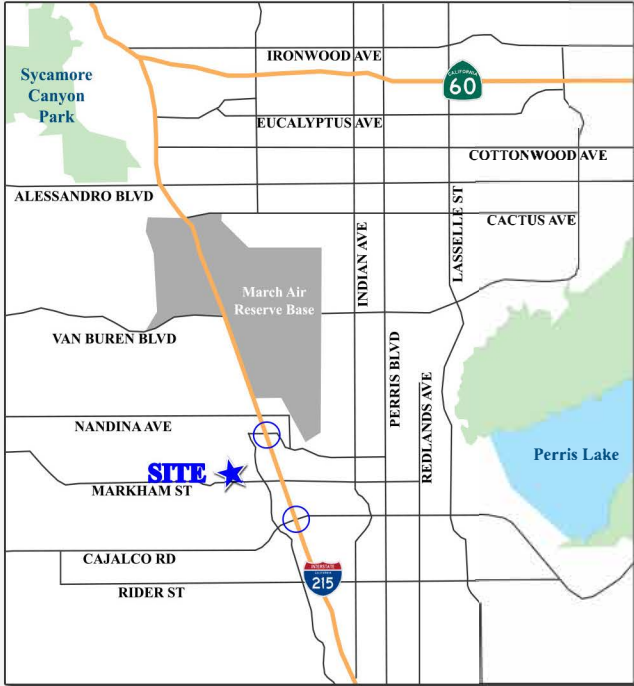
AVAILABLE FOR LEASE

4.77 ACRES



Property Features

- Contractor's Yard
- Approximately 4.77 Acres with office
- Fully Secured Site
- Riverside County (Unincorp. Perris)
- Zoning: BP-Business Park
- Single Wide 14' x 58' Mobile Home on Site
- Easy Access to the 215 and 60 Freeways
- APN: 314-190-001



22770 MARKHAM STREET | PERRIS, CALIFORNIA 92570

For further information, please contact:



MICHAEL GIULIANO, CCIM
 909.373.2918
 mgiuliano@lee-assoc.com
 Lic # 01211757

WILLIAM SISK
 909.373.2949
 wsisk@lee-assoc.com
 Lic # 01956993

The information herein has been obtained from sources we deem reliable. We have no reason to doubt its accuracy, but we do not guarantee it.

AVAILABLE FOR LEASE

4.77 ACRES

22770 MARKHAM STREET | PERRIS, CALIFORNIA

For further information, please contact:

MICHAEL GIULIANO, CCIM
 909.373.2918
 mgiuliano@lee-assoc.com
 Lic # 01211757

WILLIAM SISK
 909.373.2949
 wsisk@lee-assoc.com
 Lic # 01956993



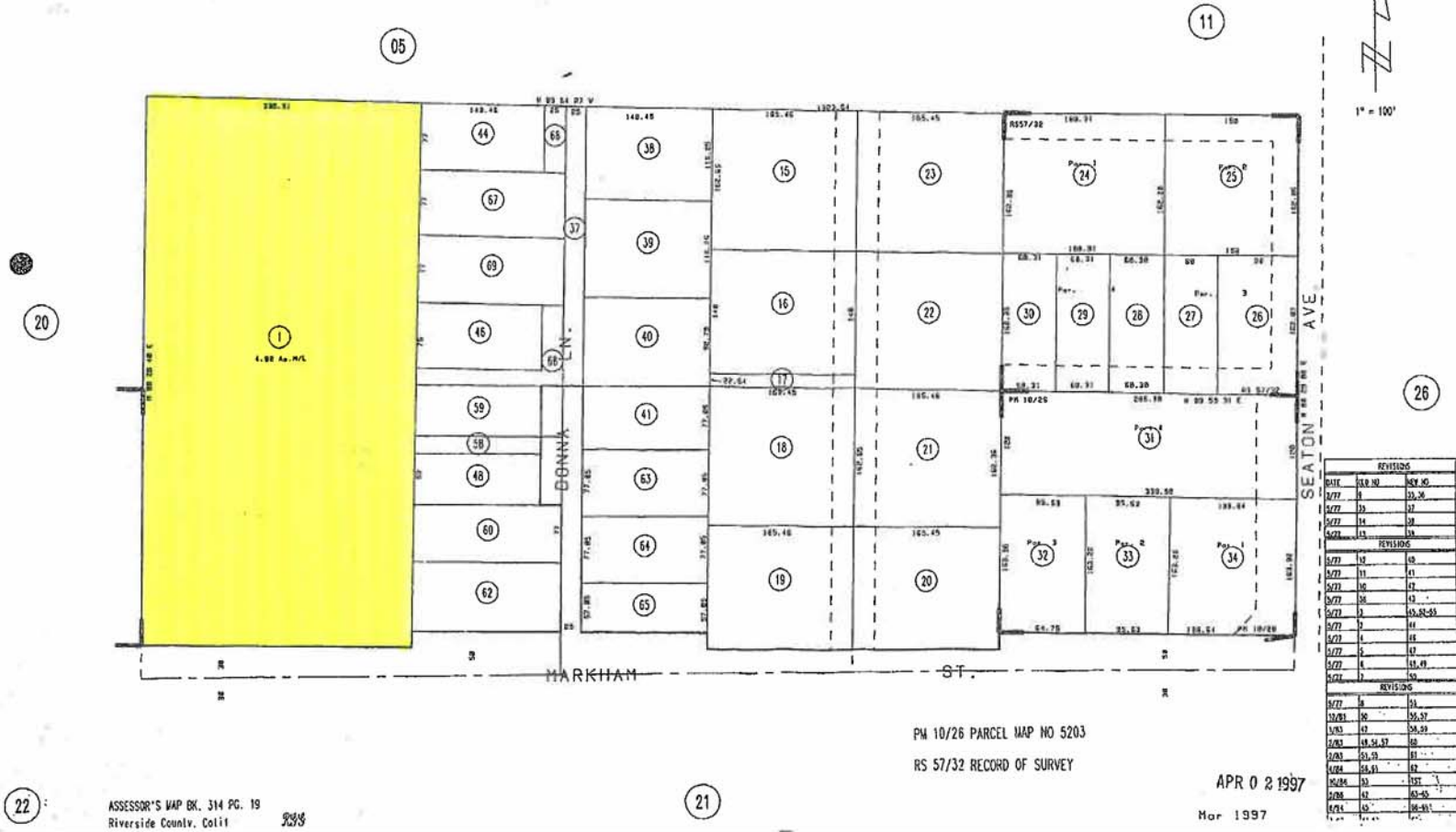
3535 Inland Empire Blvd,
 Ontario, CA 91764
 909.989.7771
 Fax 909.944.8250
 Corporate ID # 00976995
 www.lee-assoc.com

THIS MAP WAS PREPARED FOR ASSESSMENT PURPOSES ONLY. NO LIABILITY IS ASSURED FOR THE ACCURACY OF THE DATA SHOWN. ASSESSOR'S PARCEL MAY NOT COMPLY WITH LOCAL LOT-SPLIT OR BUILDING SITE ORDINANCES.

POR.NE 2 T.4S., R.4W

T.R.A. 098-021

314-19



22

ASSESSOR'S MAP BK. 314 PG. 19
 Riverside Conlv. Coll 3/3/97

21

PM 10/26 PARCEL MAP NO 5203
 RS 57/32 RECORD OF SURVEY

APR 0 2 1997
 Mar 1997

