

FOR LEASE
±5,600 - 8,570 SF | \$2.10 FSG

Voit
REAL ESTATE SERVICES

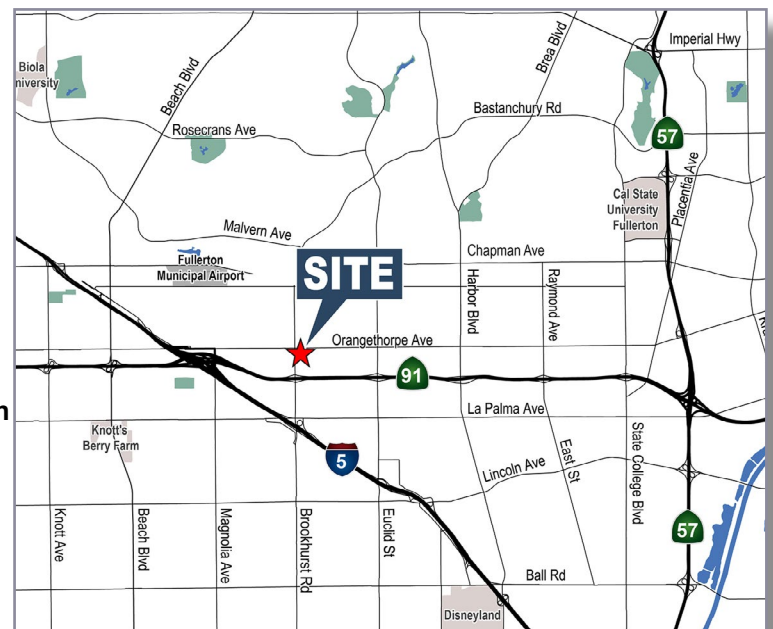
1706 W. Orangethorpe Avenue | Fullerton, CA



Features

- ± 5,600 - 8,570 SF Available
- \$2.10 FSG Lease Rate
- 4:1000 Approximate Parking Ratio
- Monument or Building Signage Available
- Close to 5, 91 & 57 Freeways
- 10' Ceiling Clearance
- Three (3) Private Offices, Conference Room, Large Open Area and Kitchen

Chris Deason
Senior Vice President
Lic #01031828
949.263.5347
cdeason@voitco.com



2020 Main Street, Suite 100, Irvine, CA 92614 • 949.851.5100 • 949.261.9092 Fax • Lic #01333376 | www.voitco.com

Real People. Real Solutions.®

FOR LEASE

±5,600 - 8,570 SF | \$2.10 FSG

1706 W. Orangethorpe Avenue | Fullerton, CA



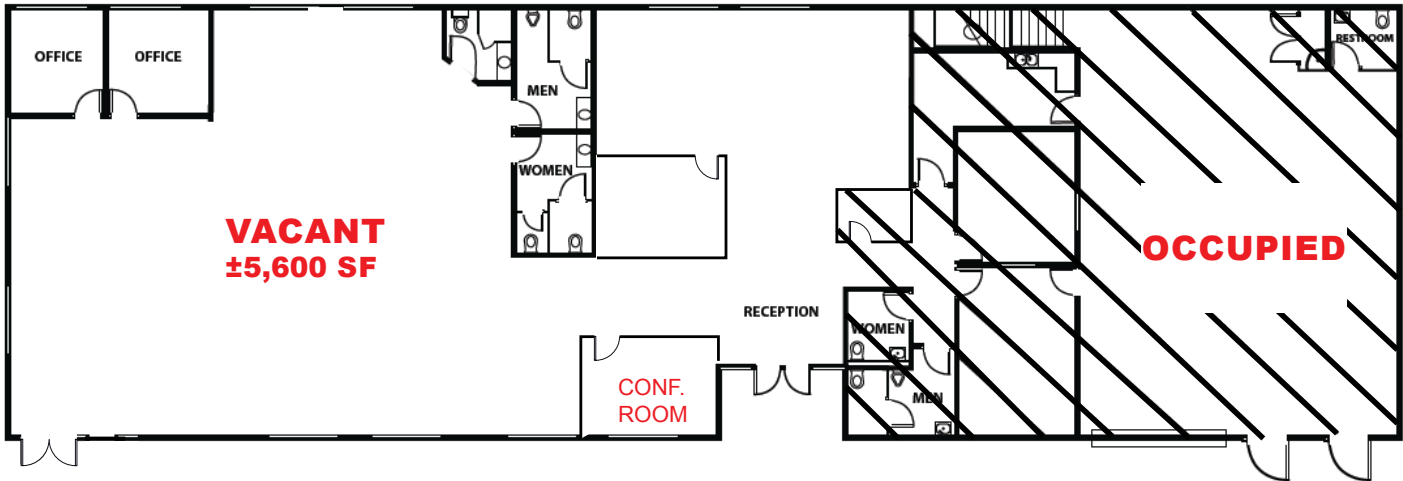
Chris Deason
Senior Vice President
Lic #01031828
949.263.5347
cdeason@voitco.com

Voit
REAL ESTATE SERVICES

2020 Main Street, Suite 100, Irvine, CA 92614 • 949.851.5100 • 949.261.9092 Fax • Lic #01333376 | www.voitco.com

FOR LEASE
±5,600 - 8,570 SF | \$2.10 FSG

1706 W. Orangethorpe Avenue | Fullerton, CA



Floor Plan

Chris Deason
Senior Vice President
Lic #01031828
949.263.5347
cdeason@voitco.com

Voit
REAL ESTATE SERVICES

2020 Main Street, Suite 100, Irvine, CA 92614 • 949.851.5100 • 949.261.9092 Fax • Lic #01333376 | www.voitco.com